



Local **HIV/AIDS** situation

2025

Special Preventive Programme
Public Health Services Branch, CHP
31 March 2026



衛生署
Department of Health



衛生防護中心
Centre for Health Protection

Outline

Part 1

2025 HIV/AIDS Epidemiology

- Yearly HIV/AIDS situation at a glance
- Trend analysis
- Late presentation



Part 2

Consolidate Support for HIV Prevention & Control

- Priority Populations Testing & Counselling Programme
- People Living with HIV (PLHIV) Support Services Programme



HIV infection alone ≠ AIDS

HIV infection

- HIV targets and kills CD4 cells of the immune system
- Some people have no symptoms at all during acute HIV infection
- The only way to know if one has HIV is to get tested
- Early diagnosis and early drug treatment effectively suppress viral replication

AIDS

- If left untreated, **HIV infection can progress to AIDS**
- Due to the extreme depletion of CD4 cells in AIDS patients, these individuals are significantly more susceptible to a wide range of cancers and opportunistic infections
- Early HIV treatment effectively prevents progression to AIDS

Key message : HIV infection is a manageable chronic disease

Routes of HIV transmission

1



Sexual contact

Heterosexual or homosexual

2



Blood contact

Contaminated blood / organ /
needles
Sharing of injection
equipment

3



**Mother-to-child
transmission**

During pregnancy, delivery or
breastfeeding

Sexual transmission remains the major route of HIV transmission in Hong Kong

Part 1

2025 HIV/AIDS Epidemiology

2025 HIV / AIDS Situation at a Glance

HIV infection

Total number of reported case	331
Gender	258 (man) / 73 (woman)
Age	6 – 76 years old
Ethnicity	225 (Chinese) / 69 (non-Chinese)
Homosexual/Bisexual	158
Heterosexual	121

Cumulative since 1984

12,734

HIV infection

AIDS

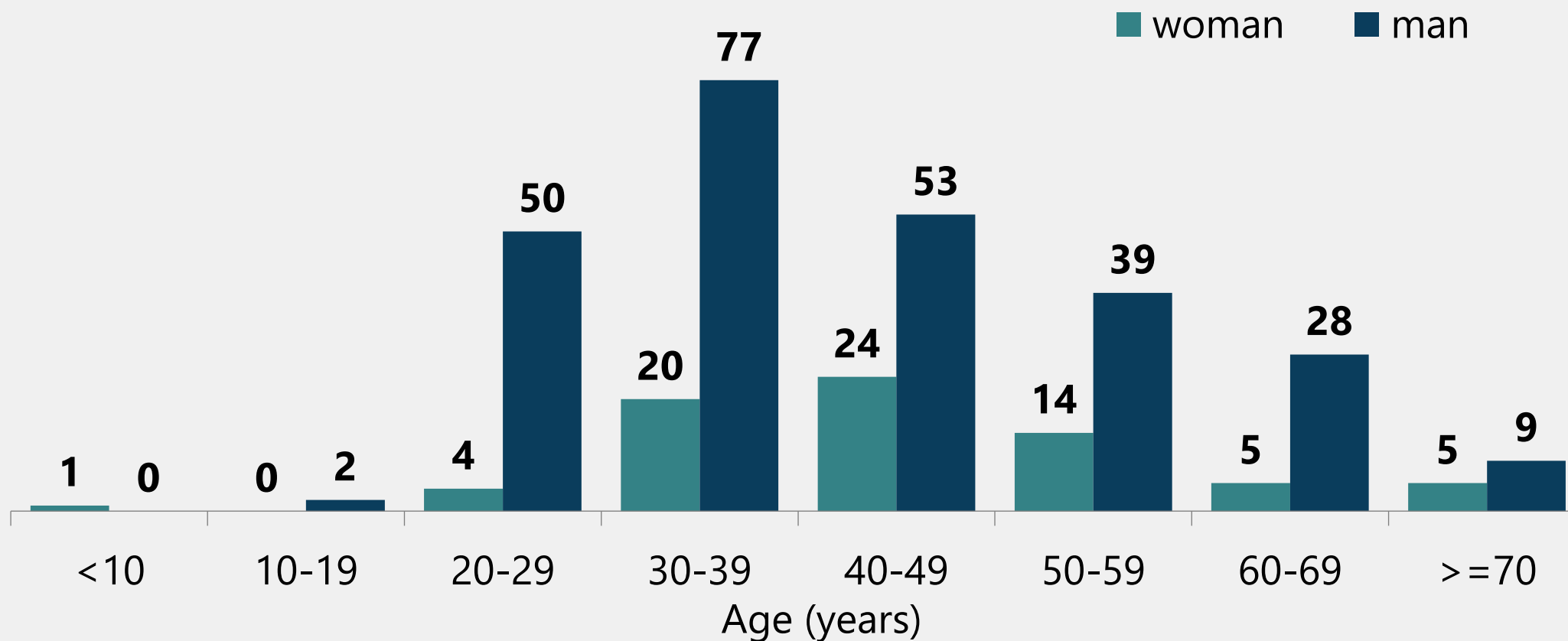
Total number of reported case	86
Gender	61 (man) / 25 (woman)
Age	24 – 76 years old
Ethnicity	60 (Chinese) / 24 (non-Chinese)
Homosexual/Bisexual	28
Heterosexual	48

Cumulative since 1985

2,643

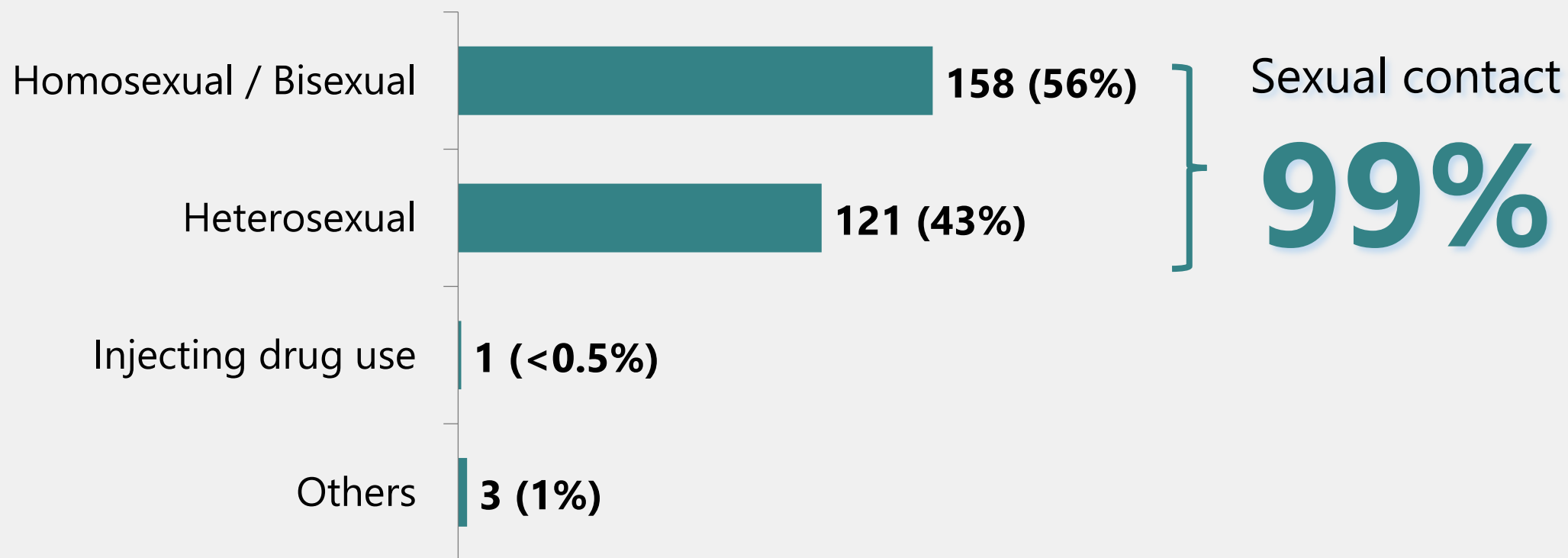
AIDS

Age-gender distribution of newly reported cases of HIV infection



Overall speaking, the peak age group is 30 to 49 years

Route of transmission of newly reported cases of HIV infection

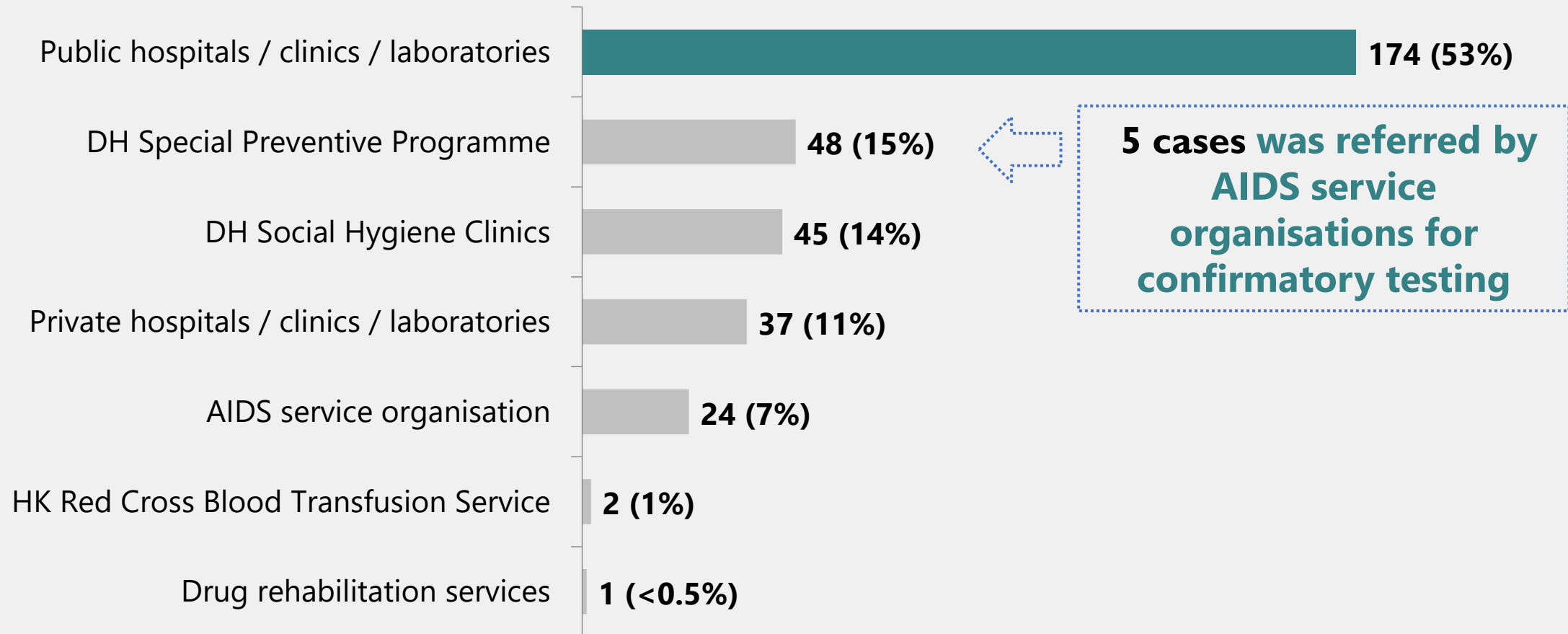


The vast majority of transmission occurred through **sexual contact**

The routes of transmission of the remaining 48 cases have yet to be determined.
The percentage may not add up to 100% due to rounding.

More than half of the cases were reported by public hospitals / clinics / laboratories

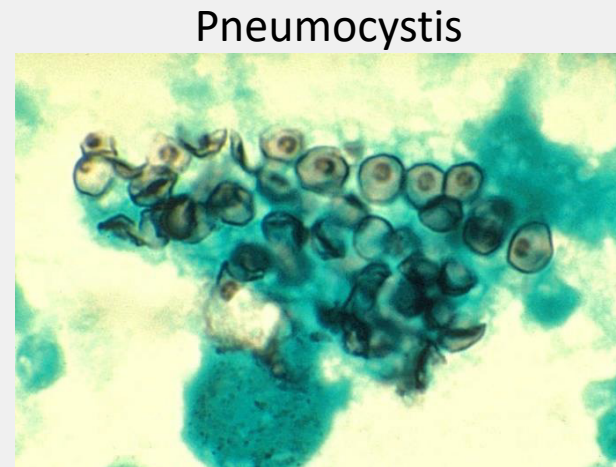
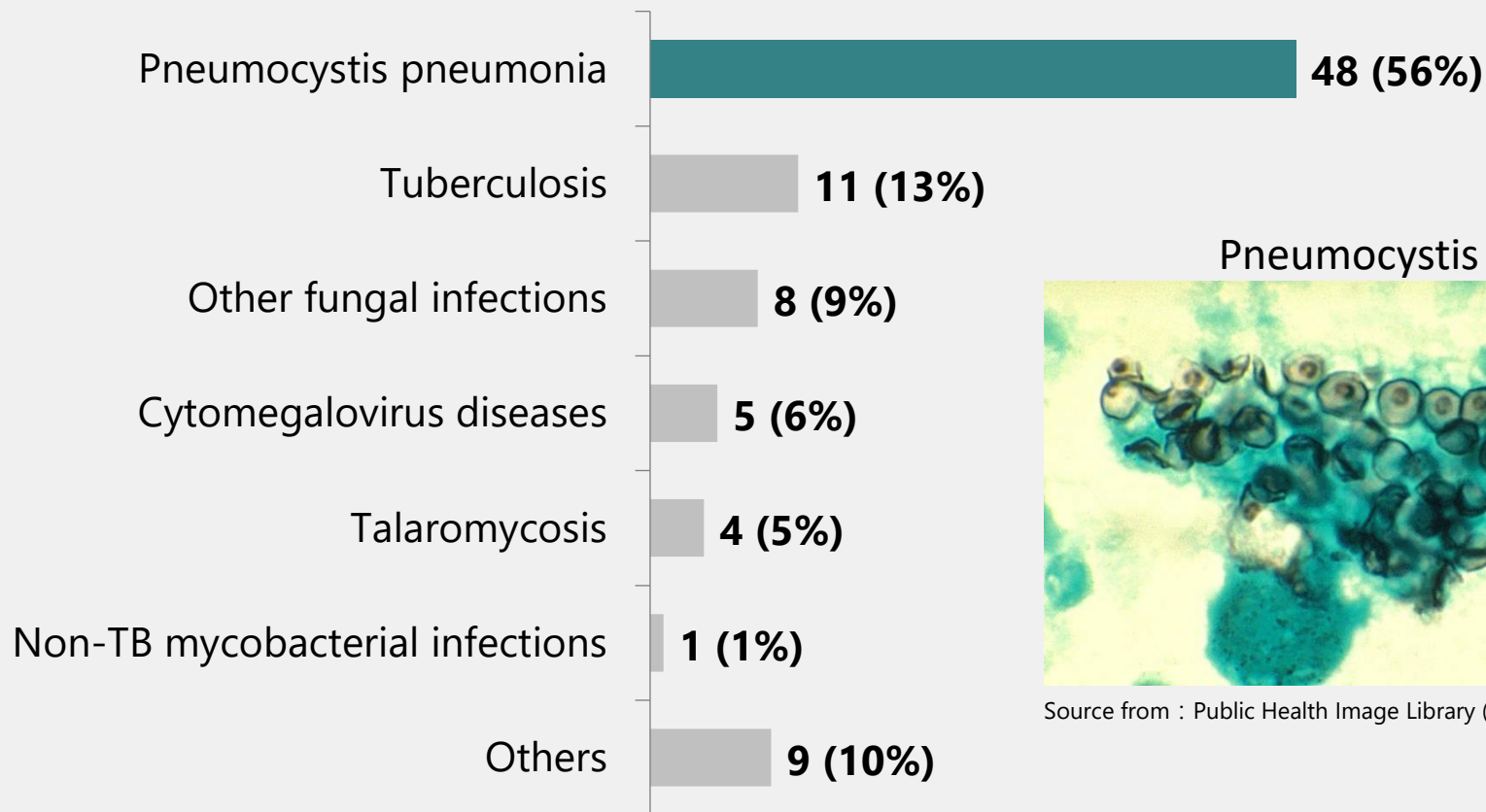
2025 Reporting sources of newly reported cases of HIV infection



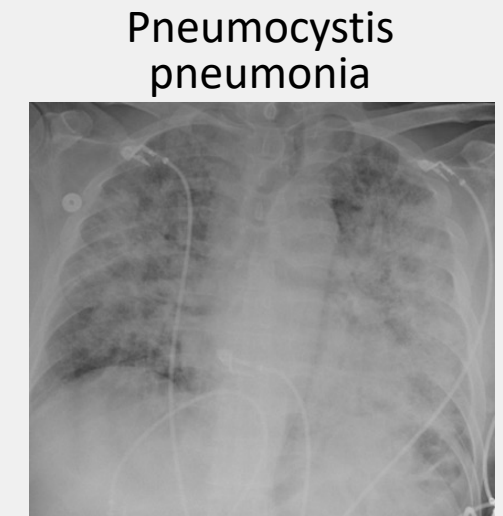
AIDS-defining illness of newly reported cases of AIDS

HIV infection + AIDS-defining illness = AIDS

Opportunistic infections and cancers: Major clinical complications related to immunodeficiency indicative of AIDS

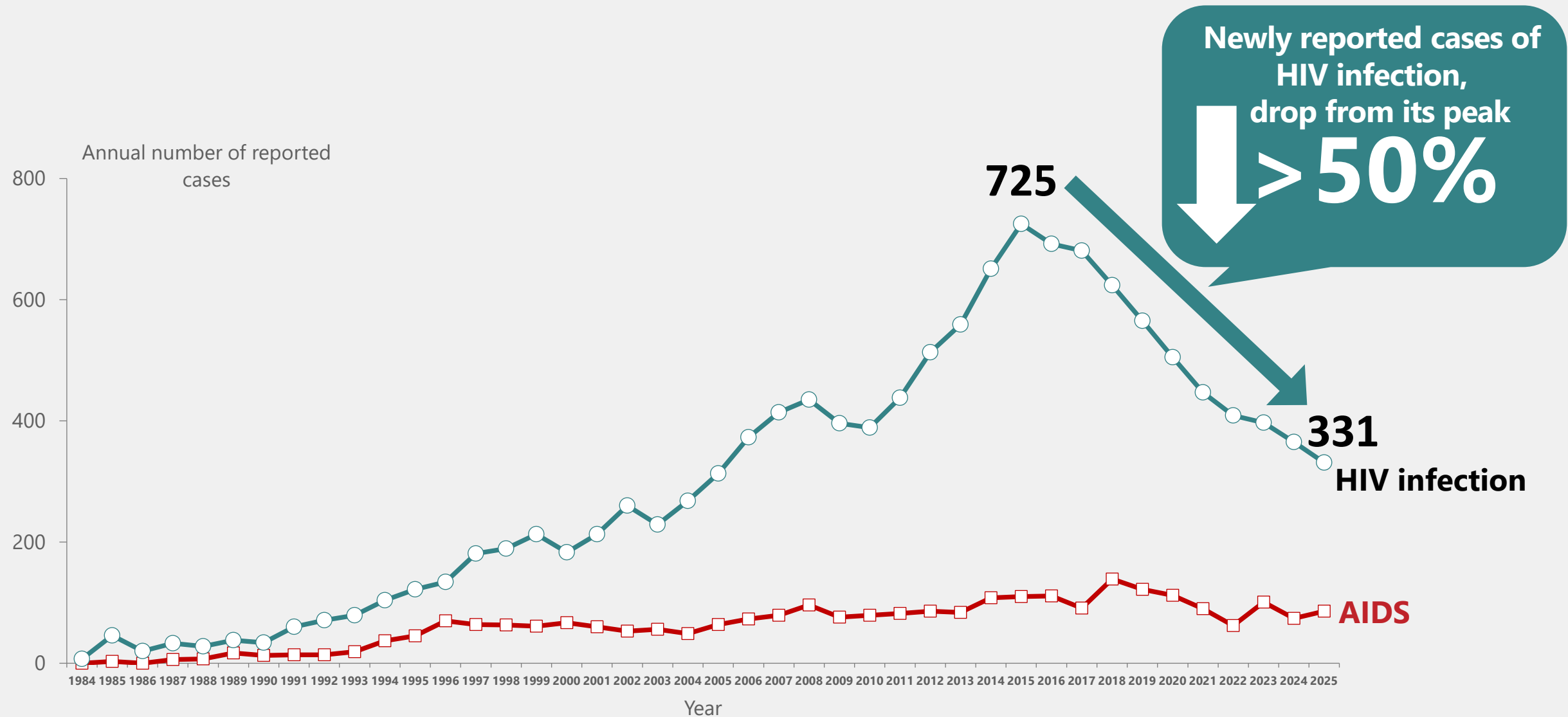


Source from : Public Health Image Library (CDC)



Source from : <https://jetem.org/pjp/>

The number of newly reported HIV infection has decreased for **10** consecutive years



The prevalence of HIV infection in Hong Kong has remained far below the global average

The prevalence of HIV infection
in Hong Kong

0.1%

Global average of
prevalence of HIV infection

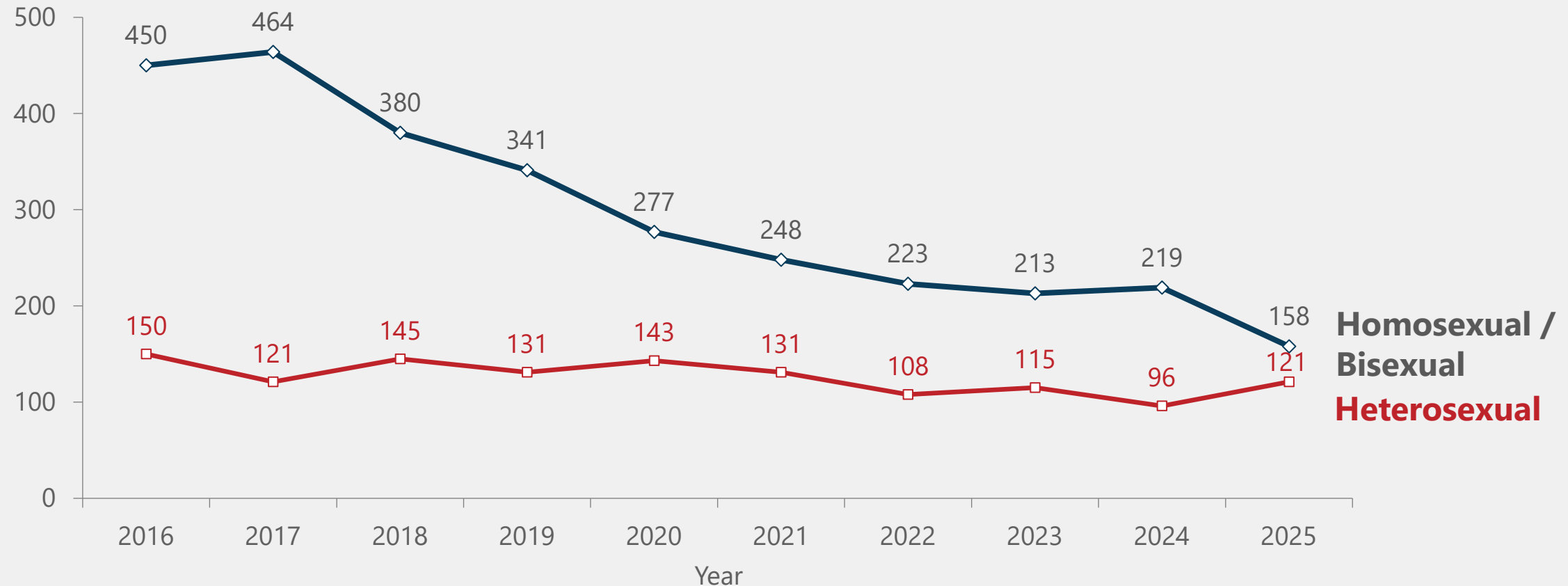
0.7%

**Reflecting the success of Hong Kong's prevention
and control efforts**

Newly reported HIV infection among MSM have dropped significantly, but such trend was not observed among heterosexuals

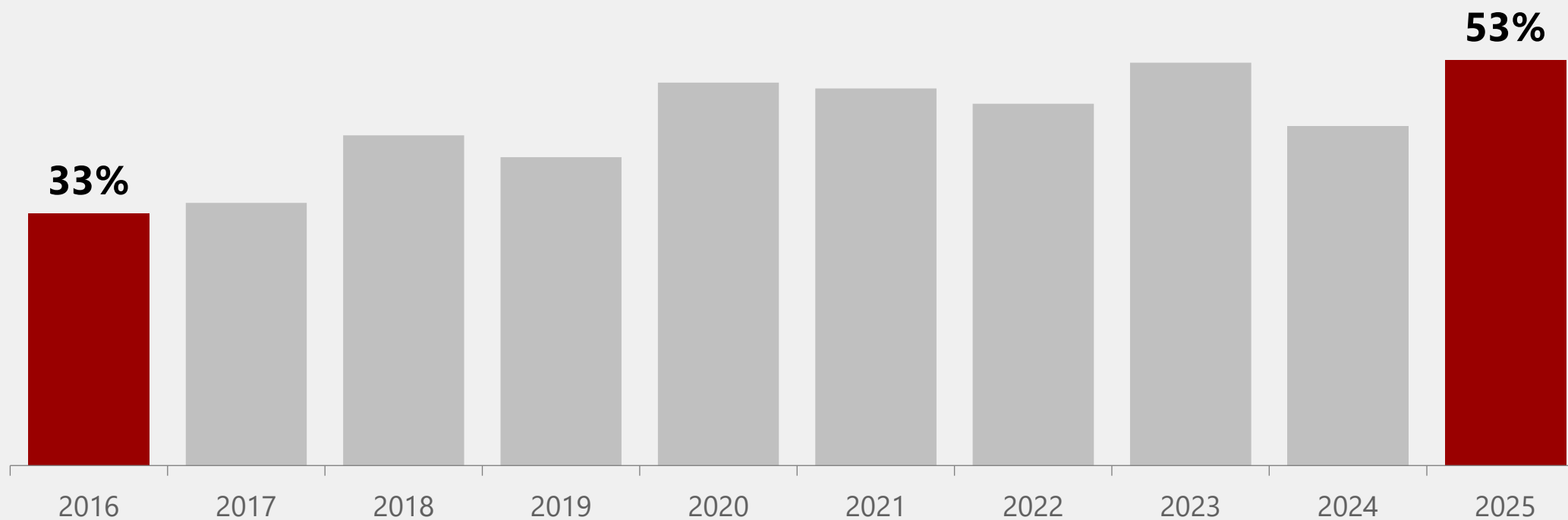
2016 – 2025 Route of transmission of newly reported cases of HIV infection by year

Annual number of reported cases



Around half of the cases were late presenters in recent years

2016 – 2025 Proportion of late presenters among newly diagnosed cases of HIV infection in Hong Kong



Late presentation

a matter of grave concern, adverse impacts on the individual and society

Late presenters: When the infected person is diagnosed with HIV, he or she has already developed AIDS or his or her CD4 lymphocyte count is very low (less than 200 cells/ μ L)

Poorer

Recovery of immune function

3.5 times

Risk of opportunistic infection

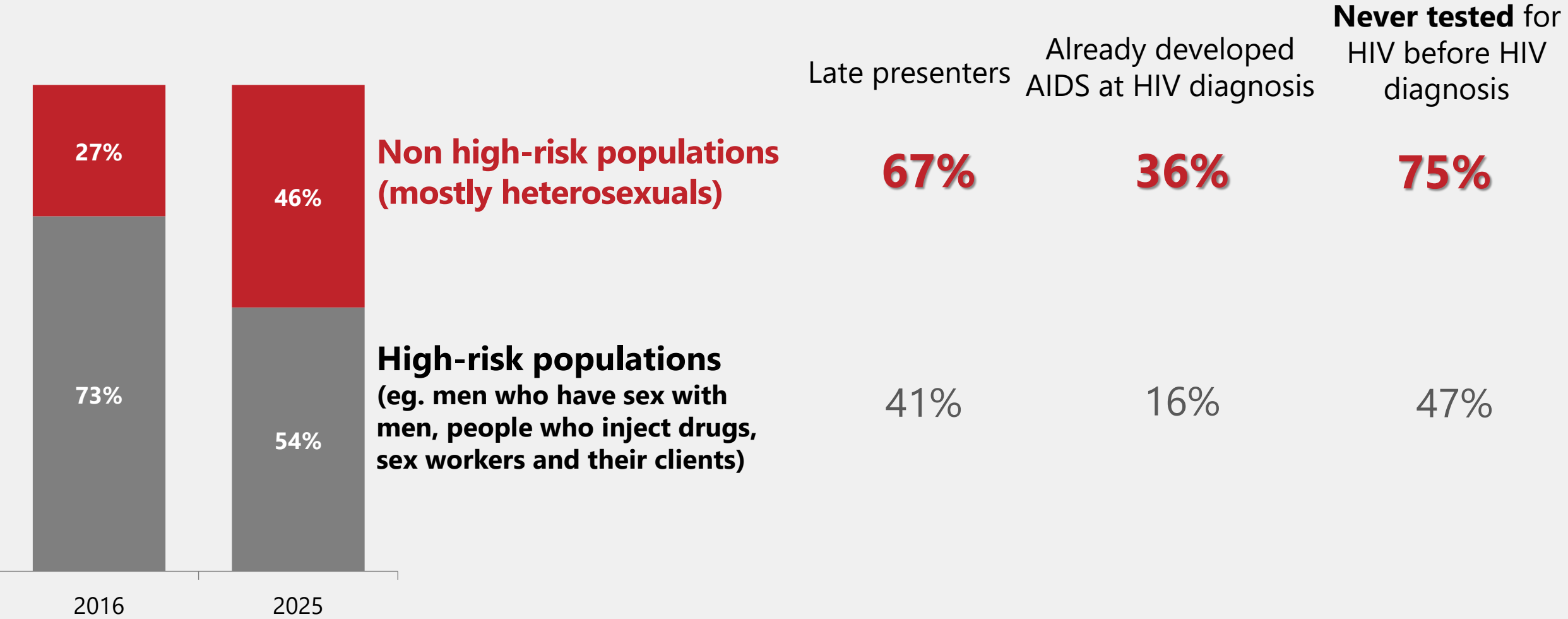
> 10 times

Mortality rate

3.5 times

Risk of transmission in the community

Around **half** of the new cases **do not belong to high-risk populations**



Data-driven strategies

1

Drop in newly reported HIV cases, especially among high-risk groups. Nevertheless, the proportion of late presenters has remained high

— Sustain and strengthen prevention and control efforts

2

Around half of the new cases do not belong to high-risk populations

— Promote normalisation of HIV testing

3

HIV infection is now a manageable chronic disease

— Strengthen community support

Strengthen community engagement
Consolidate support for HIV prevention and control →

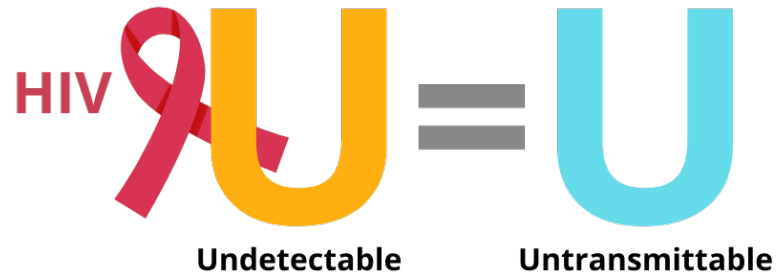
Part 2

Consolidate support for HIV prevention and control



2026 marks the 30th anniversary of the introduction of highly effective antiretroviral drugs for HIV treatment

2026 marks the 30th anniversary of the introduction of highly effective antiretroviral drugs for HIV treatment



- HIV infection is now a **manageable chronic disease**
- Early drug treatment helps achieve viral suppression, prevent the progression to AIDS and other complications, and increase the chance of survival significantly
- Those who achieve an undetectable level of virus in blood while on treatment will not transmit the virus through sex



- In Hong Kong, the “**test and treat**” strategy (i.e. initiating HIV treatment as soon as possible after diagnosis) has been widely adopted since 2015
- The number of new HIV infection has declined for 10 consecutive years since the peak in 2015 when over 700 new cases were reported, representing a more than 50 per cent drop
- Reflect the success of Hong Kong's prevention and control efforts

Treatment as Prevention

Diverse collaboration model to consolidate support for HIV prevention and control

The Government will adopt a multi-facet collaboration model to engage community stakeholders, including NGOs, in participating in HIV prevention and control work. The following two initiatives under the “Partnership Programme for Community Engagement” will be launched on April 1, 2026:

Priority Populations Testing and Counselling Programme

“Early testing, Early prevention”

- provide target participants with free HIV and syphilis antibody testing
- expand testing services
- deploy outreach teams into communities
- target-based prevention, control and intervention



People Living with HIV (PLHIV) Support Services Programme

“Comprehensive support, holistic care”

- comprehensive support for PLHIV
- help PLHIV better manage their health
- leverage community service networks established by the NGOs
- strengthen existing support for PLHIV and their families



Priority Populations Testing and Counselling Programme

Service scope

- sexual health and risk assessment
- free HIV and syphilis antibody testing
- risk assessment and explanation of testing results
- personalised psychological support and counselling
- health advice on safer sex
- referral to other services for prevention, diagnosis or follow-up care arrangement



Target participants : priority populations identified in the "Recommended HIV/AIDS Strategies for Hong Kong (2022-2027)" (including MSM, people of non-Chinese ethnic groups, transgender people, people who inject drugs, sex workers or those who were at a higher risk of infection)

Participating NGOs will also deploy outreach teams into communities to proactively provide relevant services to those in need

People Living with HIV (PLHIV) Support Services Programme



Target participants : individuals currently receiving follow-up care at public HIV clinics. HIV clinics will refer them to NGOs based on individual needs to provide personalised support.



Medication and adherence support



Psychological and social support



Group therapy activities



Drug rehabilitation and counselling support



Functional rehabilitation



Bridging psychiatric services

Two programmes address different groups and needs with precision

Early testing

Expanding testing services

Target-based prevention, control
and intervention

Early treatment

Link people with HIV to care

Treatment as Prevention

Sustained support

Comprehensive support to PLHIV

Maintain health

Community engagement

- The former promotes 'early testing and early prevention'; the latter helps PLHIV better manage their health and further strengthen the existing support for them and their families
- Leveraging the community service networks established by the NGOs over the years will help build a more accessible, targeted and sustainable HIV/AIDS prevention, control and support network
- Puts into practice the concept of community-collaborative public health service, accumulate experience for the optimisation and improvement of related services in the future



Early testing, Early identification, Early Treatment Safeguard the health of your own and your partner

46% of newly reported cases of HIV infection are not belong to high-risk populations

46%

People who have had sex should get HIV testing at least once to keep track of their health status



Access to HIV testing

AIDS Hotline

2780 2211 (**Free, Anonymous, Confidential**)

HIV Testing Service website

Order HIV self-test kits through www.hivtest.gov.hk or reserve a free, anonymous and confidential HIV antibody test

Social Hygiene Clinics, DH

Provide medical check-up, treatment and counselling on sexually transmitted infections

Family doctors

Please consult your family doctors



Download the latest statistics



Virtual AIDS Office of Hong Kong

Department of Health

The Government of the Hong Kong Special Administrative Region

www.aids.gov.hk > **Statistics** > **Latest Statistics**

Latest Statistics

- [Summary table on the updated HIV/AIDS situation through the reporting system](#) **New**
- [A graph showing Annual and Cumulative HIV/AIDS Statistics in Hong Kong](#) **New**
- [CHP encourages vigilance against HIV/AIDS](#)
- [Unusual Increase of Hepatitis A Cases in HIV Infected Men who have Sex with Men \(02/02/2017\)](#)
- **Quarterly Statistics Presentation**
 - [26/11/2024](#) **New**
 - [27/08/2024](#)

