



The Hong Kong STD/AIDS update is a composite report on HIV/AIDS reporting and STI caseload statistics published 3 monthly. The current issue has the updated information up to June 2016.

**SPP Surveillance Team:**

*Dr. Alfred SIT*

*Mr. Steve YIM*

**Correspondence to:**

*Special Preventive Programme,*

*Centre for Health Protection, Department of Health*

*c/o Red Ribbon Centre, 2/F Wang Tau Hom Jockey Club Clinic,*

*200 Junction Road East, Kowloon, Hong Kong*

*Tel: (852) 3143 7200 Fax: (852) 2338 0534*

*E-mail: [aids@dh.gov.hk](mailto:aids@dh.gov.hk)*

## List of Tables / Figures

<b>LIST OF TABLES / FIGURES</b>	<b>47</b>
<b>1. NUMBER OF HIV/AIDS REPORTED</b>	<b>49</b>
TABLE 1.1 SUMMARY TABLE ON THE REPORTED NUMBER OF HIV/AIDS	49
CHART 1.1 NUMBER OF HIV/AIDS REPORTED	52
<b>2. GENDER DISTRIBUTION OF REPORTED HIV/AIDS</b>	<b>53</b>
TABLE 2.1 GENDER DISTRIBUTION OF REPORTED HIV	53
CHART 2.1 GENDER DISTRIBUTION OF REPORTED HIV BY QUARTER	54
CHART 2.2 GENDER DISTRIBUTION OF REPORTED HIV BY YEAR	55
TABLE 2.2 GENDER DISTRIBUTION OF REPORTED AIDS	56
CHART 2.3 GENDER DISTRIBUTION OF REPORTED AIDS BY QUARTER	57
CHART 2.4 GENDER DISTRIBUTION OF REPORTED AIDS BY YEAR	58
<b>3. ETHNICITY OF REPORTED HIV/AIDS</b>	<b>59</b>
TABLE 3.1 DISTRIBUTION OF ETHNICITY OF REPORTED HIV	59
CHART 3.1 DISTRIBUTION OF ETHNICITY OF REPORTED HIV	60
TABLE 3.2 DISTRIBUTION OF ETHNICITY OF REPORTED AIDS	61
CHART 3.2 DISTRIBUTION OF ETHNICITY OF REPORTED AIDS	62
<b>4. AGE DISTRIBUTION OF REPORTED HIV/AIDS</b>	<b>63</b>
TABLE 4.1 AGE DISTRIBUTION OF REPORTED HIV	63
CHART 4.1 AGE DISTRIBUTION OF REPORTED HIV	64
CHART 4.2 AGE GROUP & GENDER OF TOTAL REPORTED HIV	65
TABLE 4.2 AGE DISTRIBUTION OF REPORTED AIDS	66
CHART 4.3 AGE DISTRIBUTION OF REPORTED AIDS	67
CHART 4.4 AGE GROUP & GENDER OF TOTAL REPORTED AIDS	68
<b>5. EXPOSURE CATEGORIES OF REPORTED HIV/AIDS</b>	<b>69</b>
TABLE 5.1 EXPOSURE CATEGORIES OF REPORTED HIV	69
CHART 5.1 EXPOSURE CATEGORIES OF REPORTED HIV	70
TABLE 5.2 EXPOSURE CATEGORIES OF REPORTED AIDS	71
CHART 5.2 EXPOSURE CATEGORIES OF REPORTED AIDS	72
<b>6. RATIO (HETEROSEXUAL : HOMOSEXUAL / BISEXUAL) OF SEXUALLY ACQUIRED HIV INFECTION IN MEN</b>	<b>73</b>

TABLE 6.1 RATIO OF SEXUALLY ACQUIRED INFECTION IN MEN WITH REPORTED HIV/AIDS (HETEROSEXUAL : HOMO / BISEXUAL) BY QUARTER	73
TABLE 6.2 RATIO OF SEXUALLY ACQUIRED INFECTION IN MEN WITH REPORTED HIV/AIDS (HETEROSEXUAL : HOMO / BISEXUAL) BY YEAR	74
<b>7. INJECTING DRUG USERS IN REPORTED HIV/AIDS</b>	<b>75</b>
TABLE 7.1 INJECTING DRUG USERS IN REPORTED HIV/AIDS	75
TABLE 7.2 NUMBER OF INJECTING DRUG USER IN REPORTED HIV/AIDS BY YEAR	76
<b>8. SOURCE OF REFERRAL OF REPORTED HIV/AIDS</b>	<b>77</b>
TABLE 8.1 SOURCE OF REFERRAL OF REPORTED HIV	77
CHART 8.1 SOURCE OF REFERRAL OF REPORTED HIV	78
TABLE 8.2 SOURCE OF REFERRAL OF REPORTED AIDS	79
CHART 8.2 SOURCE OF REFERRAL OF REPORTED AIDS	80
<b>9. DISTRIBUTION OF AIDS DEFINING ILLNESSES</b>	<b>81</b>
TABLE 9.1 DISTRIBUTION OF AIDS DEFINING ILLNESS OF REPORTED AIDS	81
CHART 9.1 AIDS DEFINING ILLNESS OF TOTAL REPORTED AIDS	82
CHART 9.2 AIDS DEFINING ILLNESS OF REPORTED AIDS BY YEAR	83
<b>10. REPORTED SEXUALLY TRANSMITTED INFECTIONS (STIS) DIAGNOSED IN SOCIAL HYGIENE SERVICE</b>	<b>84</b>
TABLE 10.1 SUMMARY TABLE ON THE REPORTED STIS DIAGNOSED IN SOCIAL HYGIENE SERVICE	84
<b>11. GENDER DISTRIBUTION OF REPORTED STIS</b>	<b>86</b>
TABLE 11.1 GENDER DISTRIBUTION OF SELECTED STI REPORTED BY SOCIAL HYGIENE SERVICE	86
TABLE 11.2 GENDER DISTRIBUTION OF REPORTED STI BY CLINIC	88
<b>12. CLINIC DISTRIBUTION</b>	<b>89</b>
CHART 12.1 NUMBER OF NEWLY REPORT STI IN Q2 2016 BY CLINIC (MALE CLIENTS)	89
CHART 12.2 NUMBER OF NEWLY REPORT STI IN Q2 2016 BY CLINIC (FEMALE CLIENTS)	90

## 1. Number of HIV/AIDS reported

**Table 1.1 Summary table on the reported number of HIV/AIDS**

	This quarter (Apr - Jun 2016)		Last quarter (Jan - Mar 2016)		Same quarter last year (Apr - Jun 2015)		Cumulative (1984 – Jun 2016)	
	HIV	AIDS	HIV	AIDS	HIV	AIDS	HIV	AIDS
<b>Sex</b>								
Male	163	23	121	15	155	22	6502	1421
Female	25	5	26	2	24	9	1551	279
<b>Ethnicity/race</b>								
Chinese	119	18	98	14	134	24	5,467	1,302
Non-Chinese	38	10	39	3	38	7	2,414	398
<i>Asian</i>	17	7	17	0	20	5	1,202	262
<i>White</i>	8	1	6	1	12	0	524	95
<i>Black</i>	5	2	9	2	6	2	196	37
<i>Others</i>	8	0	7	0	0	0	492	4
Unknown	31	0	10	0	7	0	172	0

**(to be cont'd)**

**Table 1.1 (cont'd)**

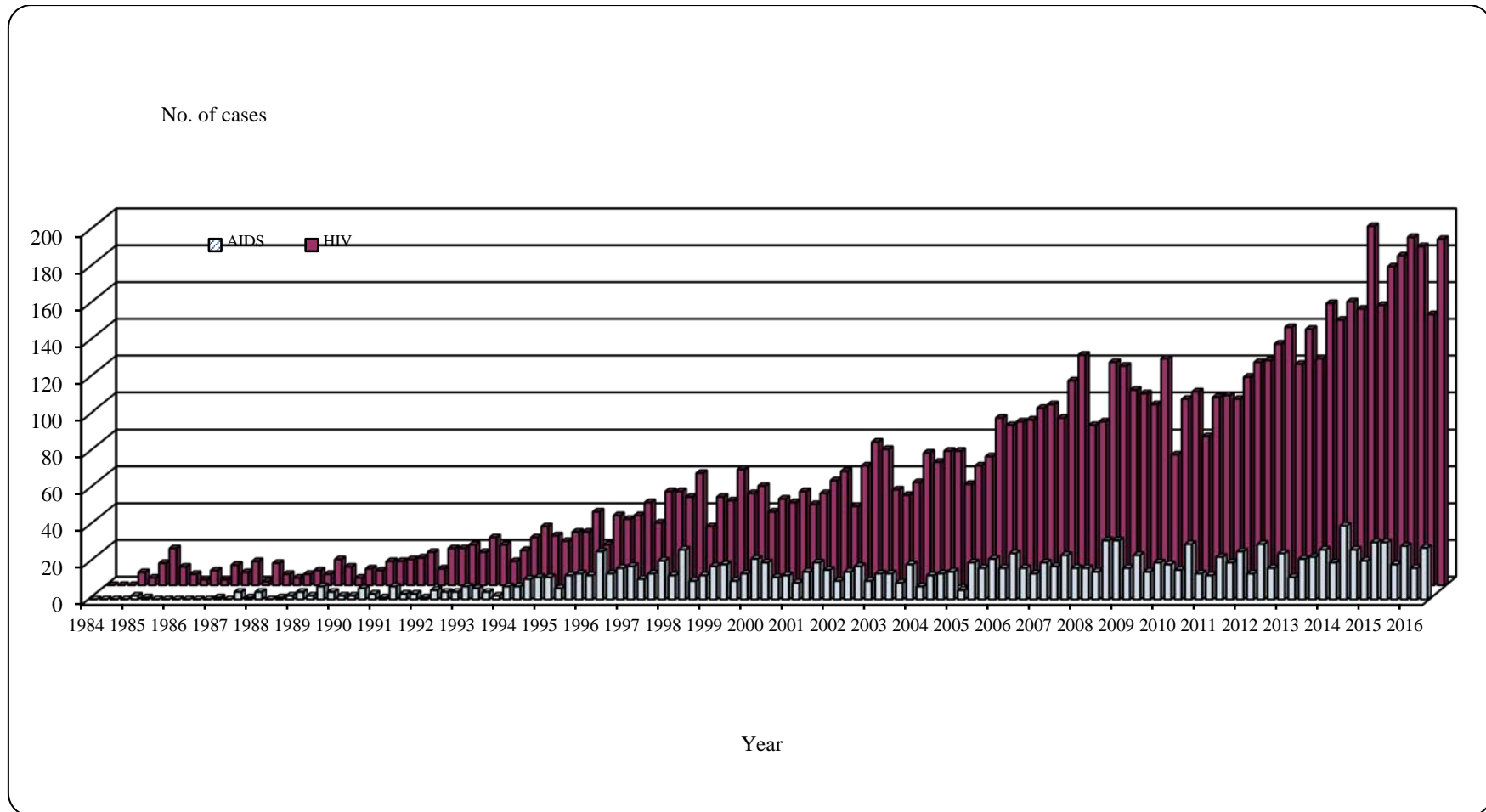
	This quarter (Apr - Jun 2016)		Last quarter (Jan - Mar 2016)		Same quarter last year (Apr - Jun 2015)		Cumulative (1984 – Jun 2016)	
	HIV	AIDS	HIV	AIDS	HIV	AIDS	HIV	AIDS
<b>Age at diagnosis</b>								
Adult	188	28	147	17	178	30	8002	1686
Child (age 13 or less)	0	0	0	0	1	1	51	14
<b>Exposure category</b>								
Heterosexual	35	12	30	5	39	15	2871	937
Homosexual	86	8	75	9	97	12	2973	462
Bisexual	12	5	11	3	15	2	362	82
Injecting drug use	1	0	2	0	3	1	348	63
Blood / blood product infusion	0	0	0	0	0	0	84	24
Perinatal	0	0	0	0	1	1	29	9
Undetermined	54	3	29	0	24	0	1386	123

**(to be cont'd)**

**Table 1.1 (Cont'd)**

	This quarter (Apr - Jun 2016)		Last quarter (Jan - Mar 2016)		Same quarter last year (Apr - Jun 2015)		Cumulative (1984 – Jun 2016)	
	HIV	AIDS	HIV	AIDS	HIV	AIDS	HIV	AIDS
<b>Source of referral</b>								
Public hospitals / clinics / laboratories	73	20	66	16	66	27	3262	1289
Private hospitals / clinics / laboratories	38	7	16	1	34	0	1673	227
Social Hygiene Clinics	34	0	24	0	31	1	1130	60
DH AIDS Unit	11	1	11	0	17	2	1027	98
AIDS service organisations (NGOs)	28	0	26	0	25	1	688	11
Hong Kong Red Cross Blood Transfusion Service	2	0	2	0	3	0	149	9
Drug rehabilitation services	2	0	2	0	3	0	124	6
<b>Total</b>	<b>188</b>	<b>28</b>	<b>147</b>	<b>17</b>	<b>179</b>	<b>31</b>	<b>8053</b>	<b>1700</b>

Chart 1.1 Number of HIV/AIDS reported



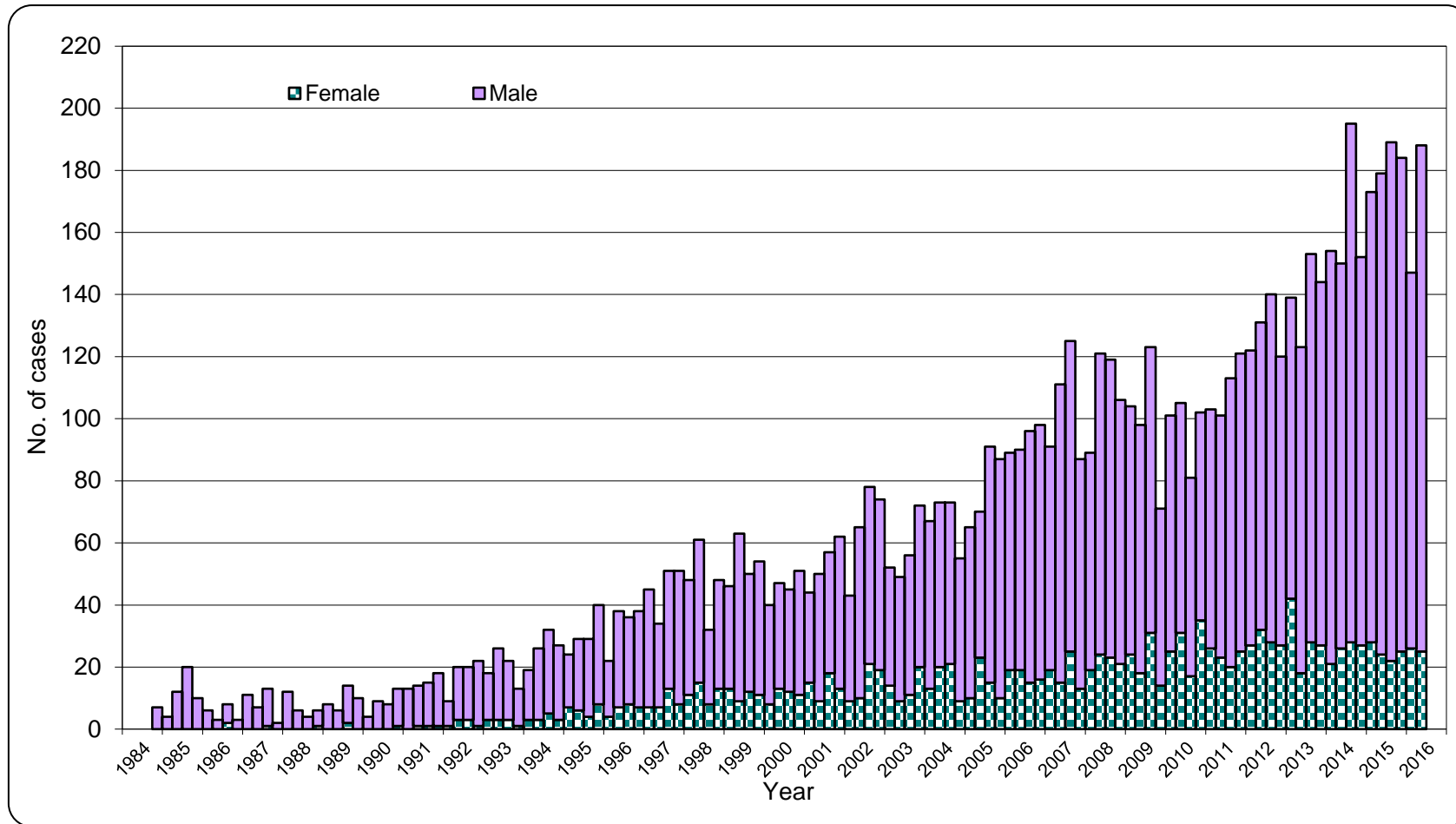
## 2. Gender distribution of reported HIV/AIDS

**Table 2.1 Gender distribution of reported HIV**

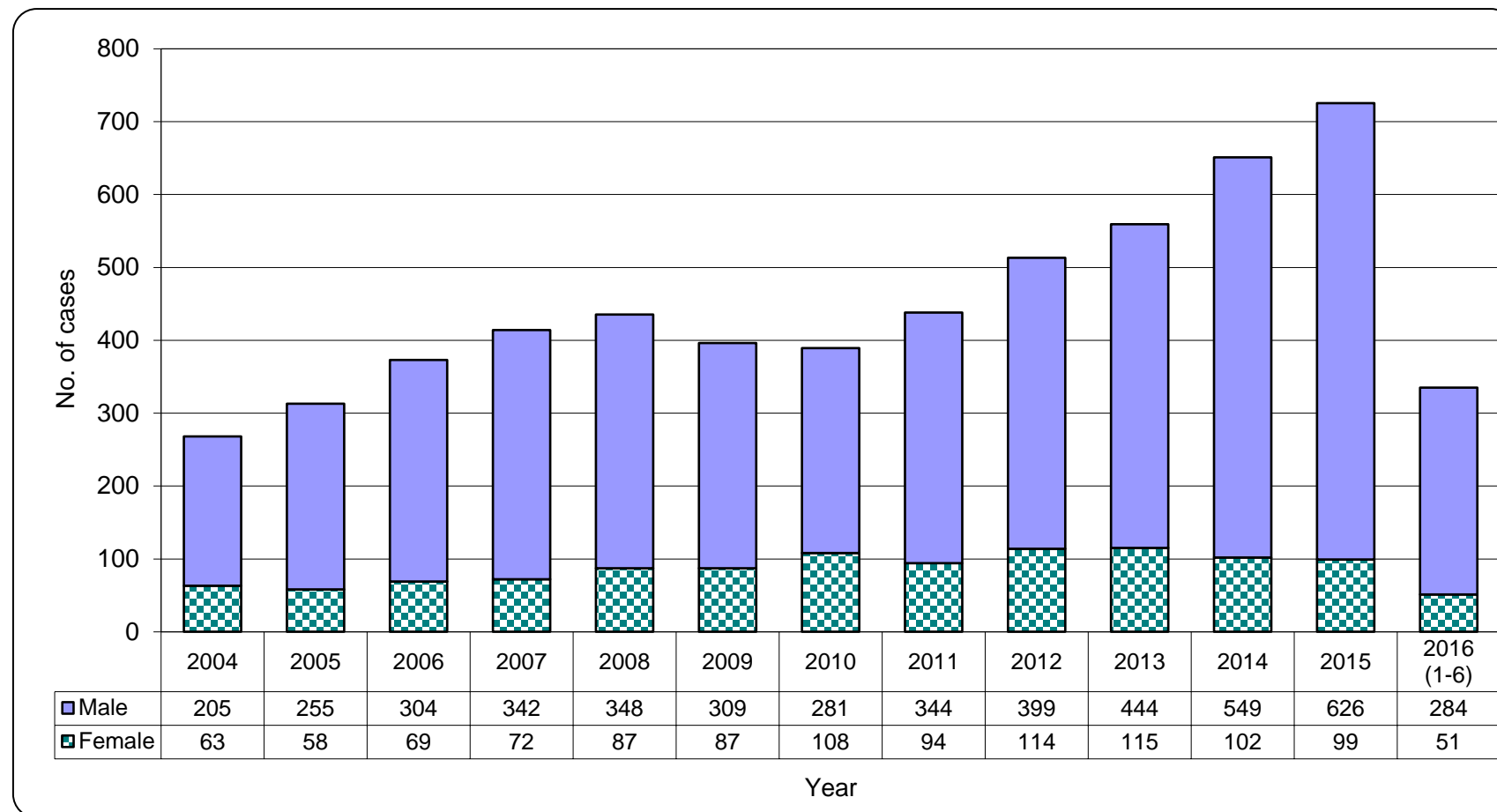
	This quarter (Apr - Jun 2016)	Last quarter (Jan - Mar 2016)	Same quarter last year (Apr - Jun 2015)	Cumulative (1984 – Jun 2016)
Male	163	121	155	6,502
Female	25	26	24	1,551
<b>Total</b>	<b>188</b>	<b>147</b>	<b>179</b>	<b>8,053</b>



Chart 2.1 Gender distribution of reported HIV by quarter



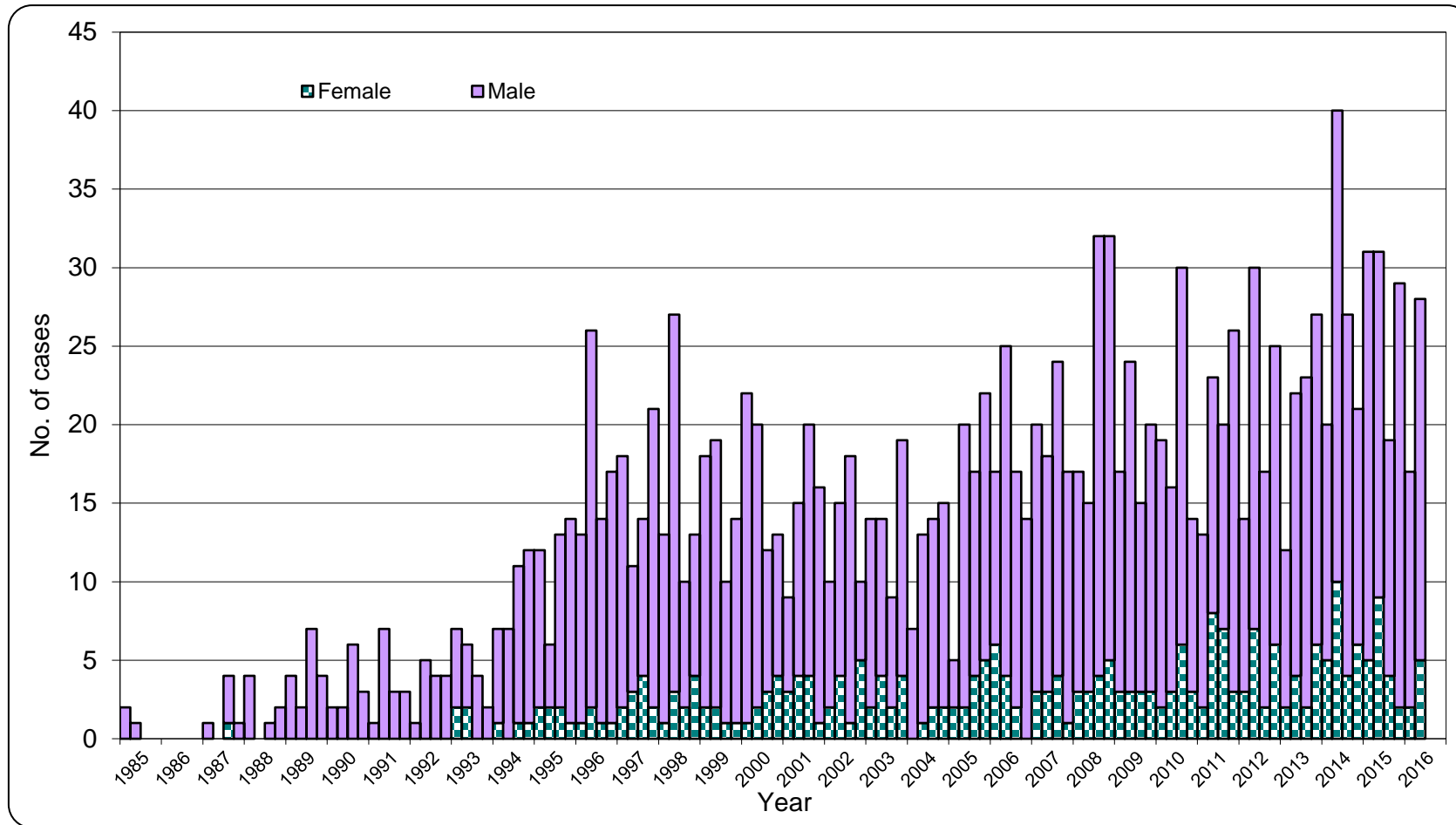
**Chart 2.2 Gender distribution of reported HIV by year**



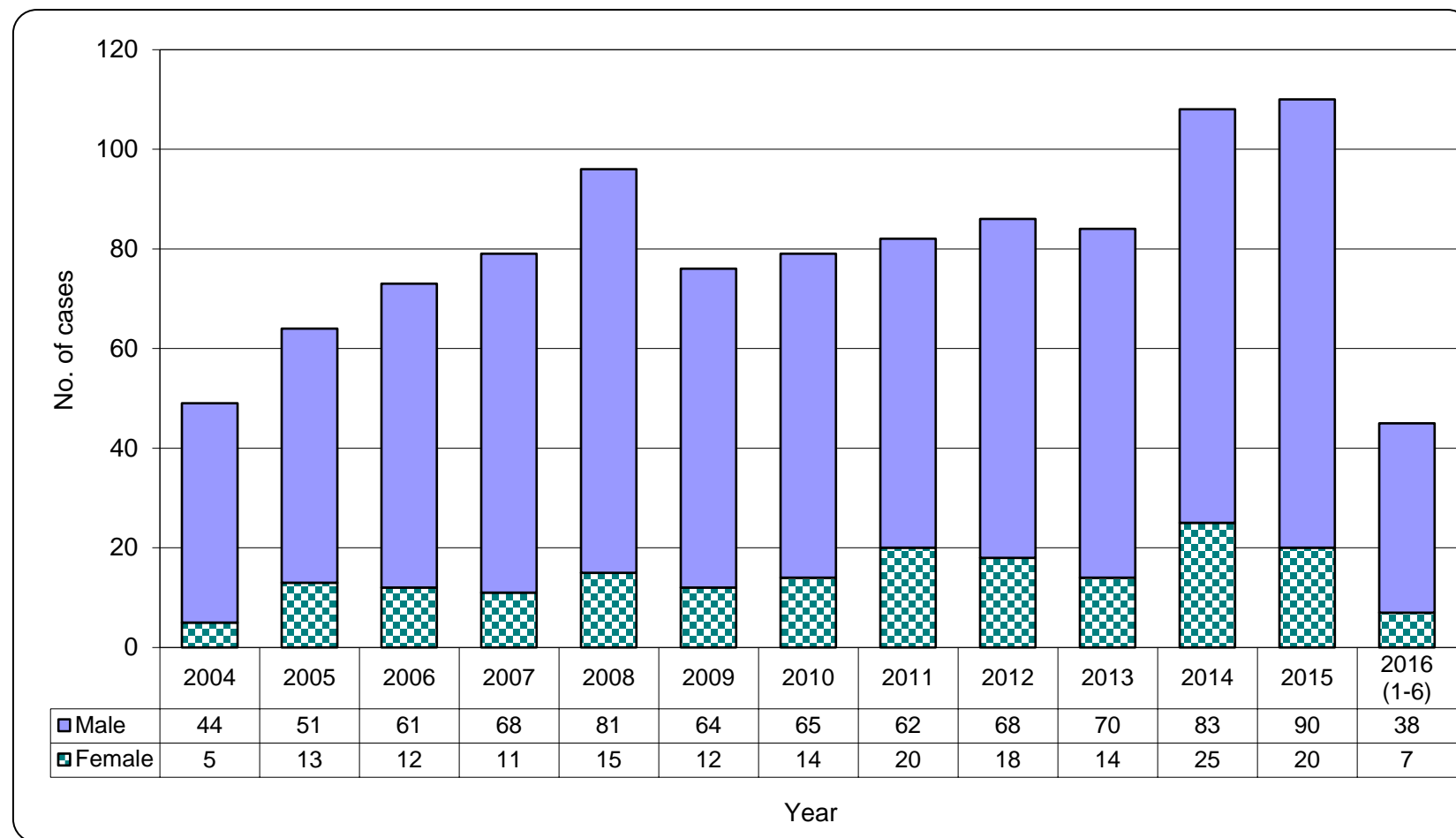
**Table 2.2 Gender distribution of reported AIDS**

	This quarter (Apr - Jun 2016)	Last quarter (Jan - Mar 2016)	Same quarter last year (Apr - Jun 2015)	Cumulative (1984 – Jun 2016)
Male	23	15	22	1,421
Female	5	2	9	279
<b>Total</b>	<b>28</b>	<b>17</b>	<b>31</b>	<b>1,700</b>

Chart 2.3 Gender distribution of reported AIDS by quarter



**Chart 2.4 Gender distribution of reported AIDS by year**

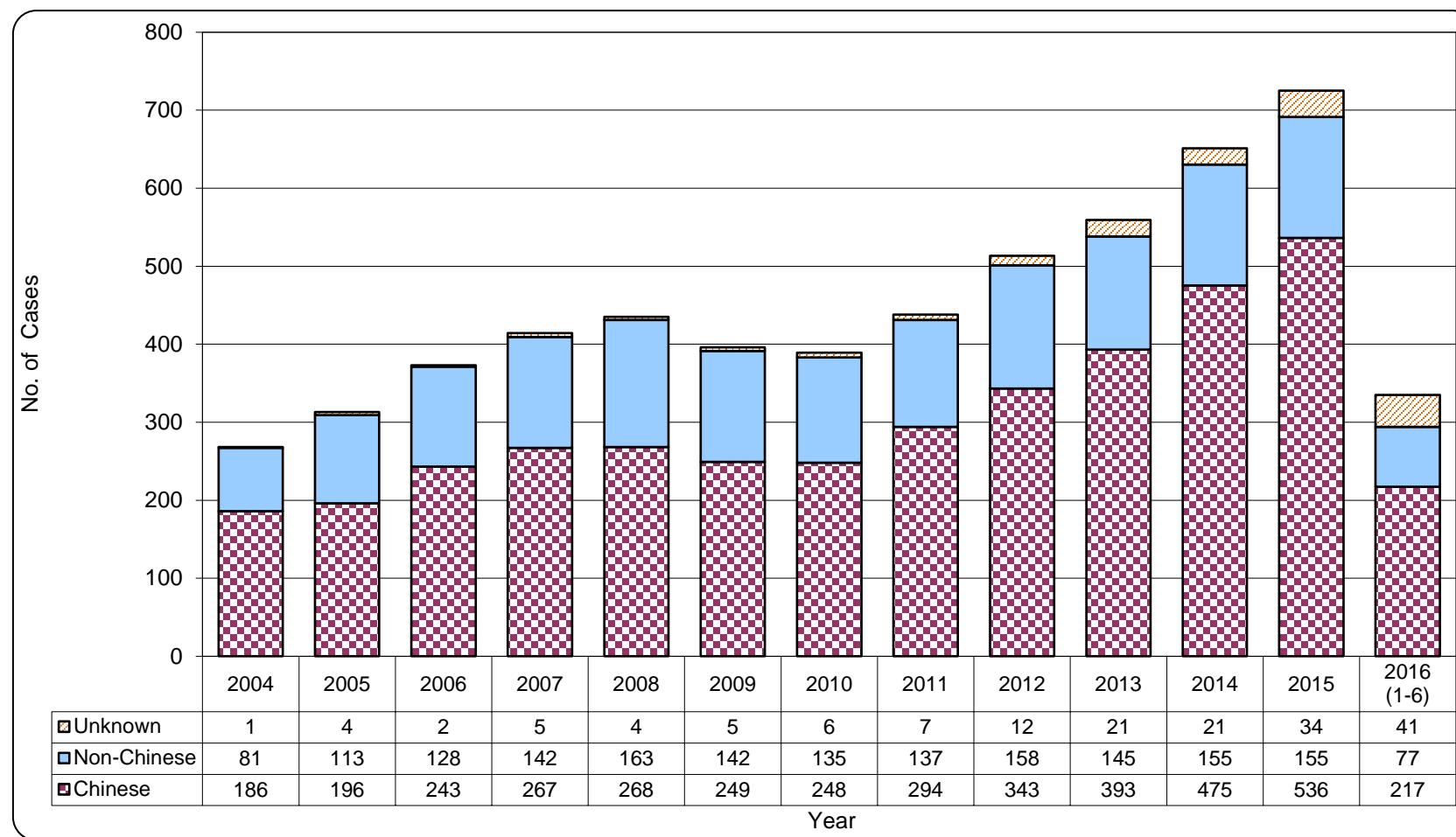


### 3. Ethnicity of reported HIV/AIDS

**Table 3.1 Distribution of ethnicity of reported HIV**

	This quarter (Apr - Jun 2016)	Last quarter (Jan - Mar 2016)	Same quarter last year (Apr - Jun 2015)	Cumulative (1984 – Jun 2016)
<b>Chinese</b>	119	98	134	5,467
<b>Non-Chinese</b>	38	39	38	2,414
<i>Asian</i>	17	17	20	1,202
<i>White</i>	8	6	12	524
<i>Black</i>	5	9	6	196
<i>Others</i>	8	7	0	492
<b>Unknown</b>	31	10	7	172
<b>Total</b>	<b>188</b>	<b>147</b>	<b>179</b>	<b>8,053</b>

**Chart 3.1 Distribution of ethnicity of reported HIV**

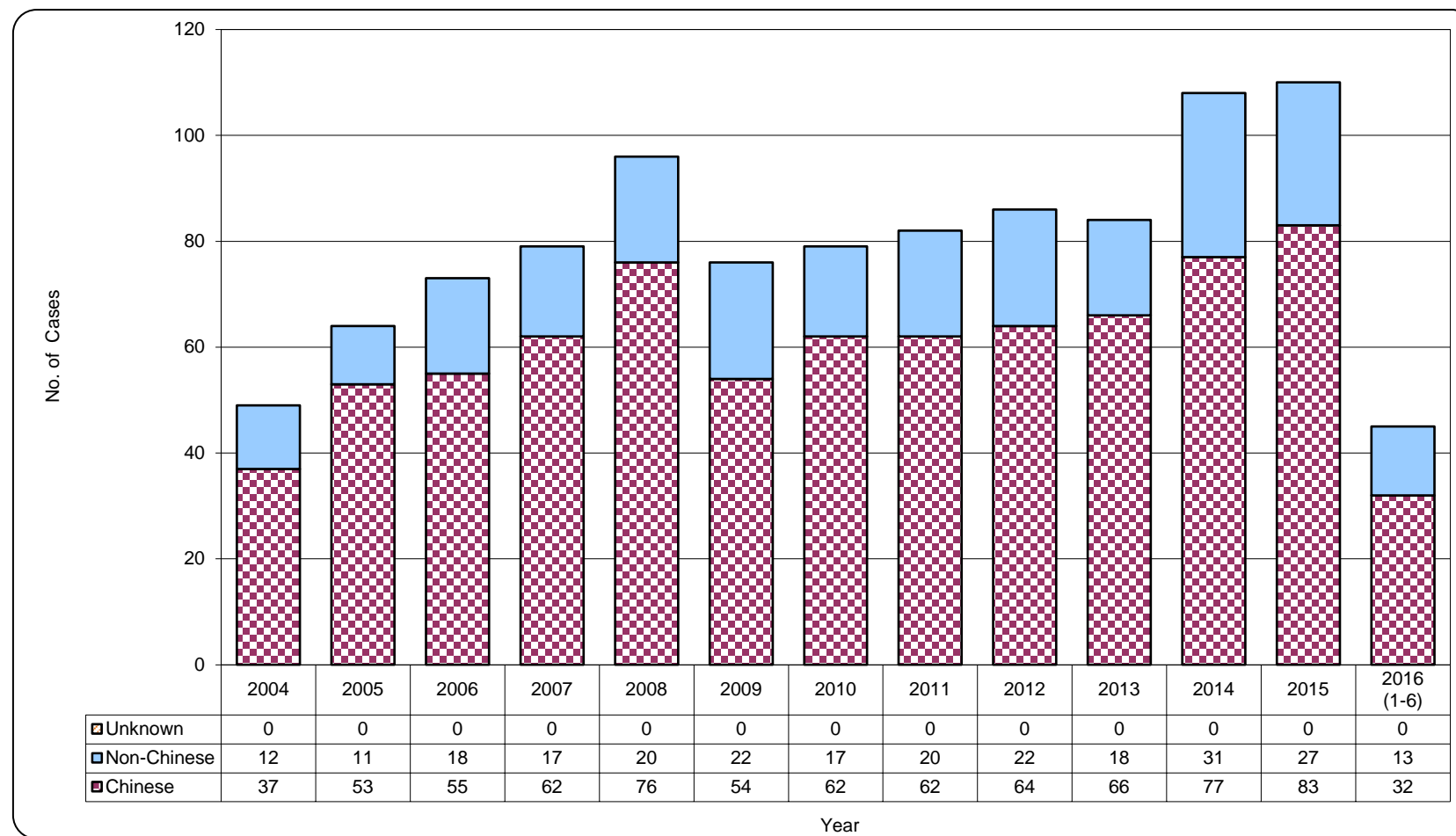


**Table 3.2 Distribution of ethnicity of reported AIDS**

	This quarter (Apr - Jun 2016)	Last quarter (Jan - Mar 2016)	Same quarter last year (Apr - Jun 2015)	Cumulative (1984 – Jun 2016)
<b>Chinese</b>	18	14	24	1,302
<b>Non-Chinese</b>	10	3	7	398
<i>Asian</i>	7	0	5	262
<i>White</i>	1	1	0	95
<i>Black</i>	2	2	2	37
<i>Others</i>	0	0	0	4
<b>Unknown</b>	0	0	0	0
<b>Total</b>	<b>28</b>	<b>17</b>	<b>31</b>	<b>1,700</b>



**Chart 3.2 Distribution of ethnicity of reported AIDS**

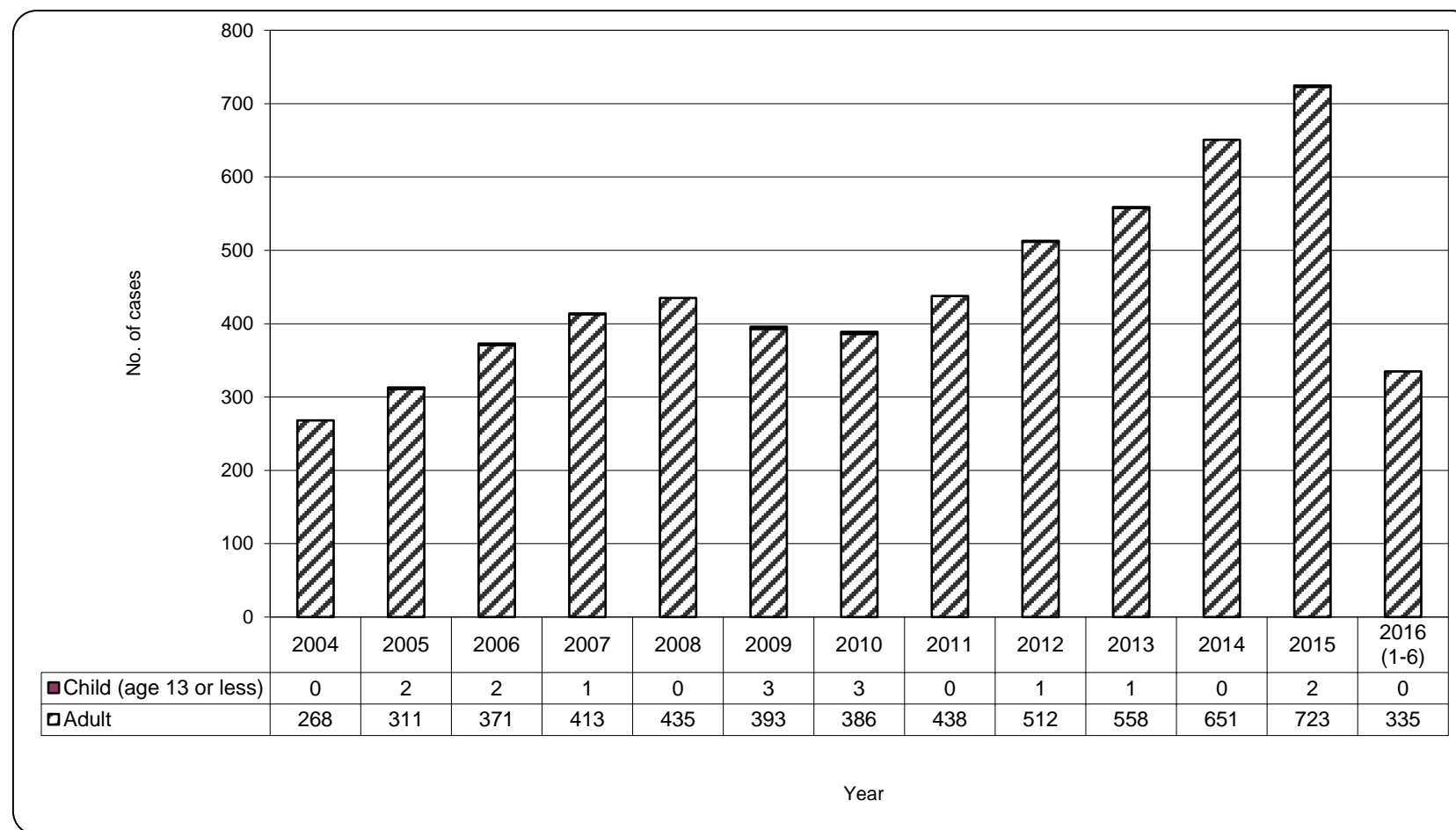


#### 4. Age distribution of reported HIV/AIDS

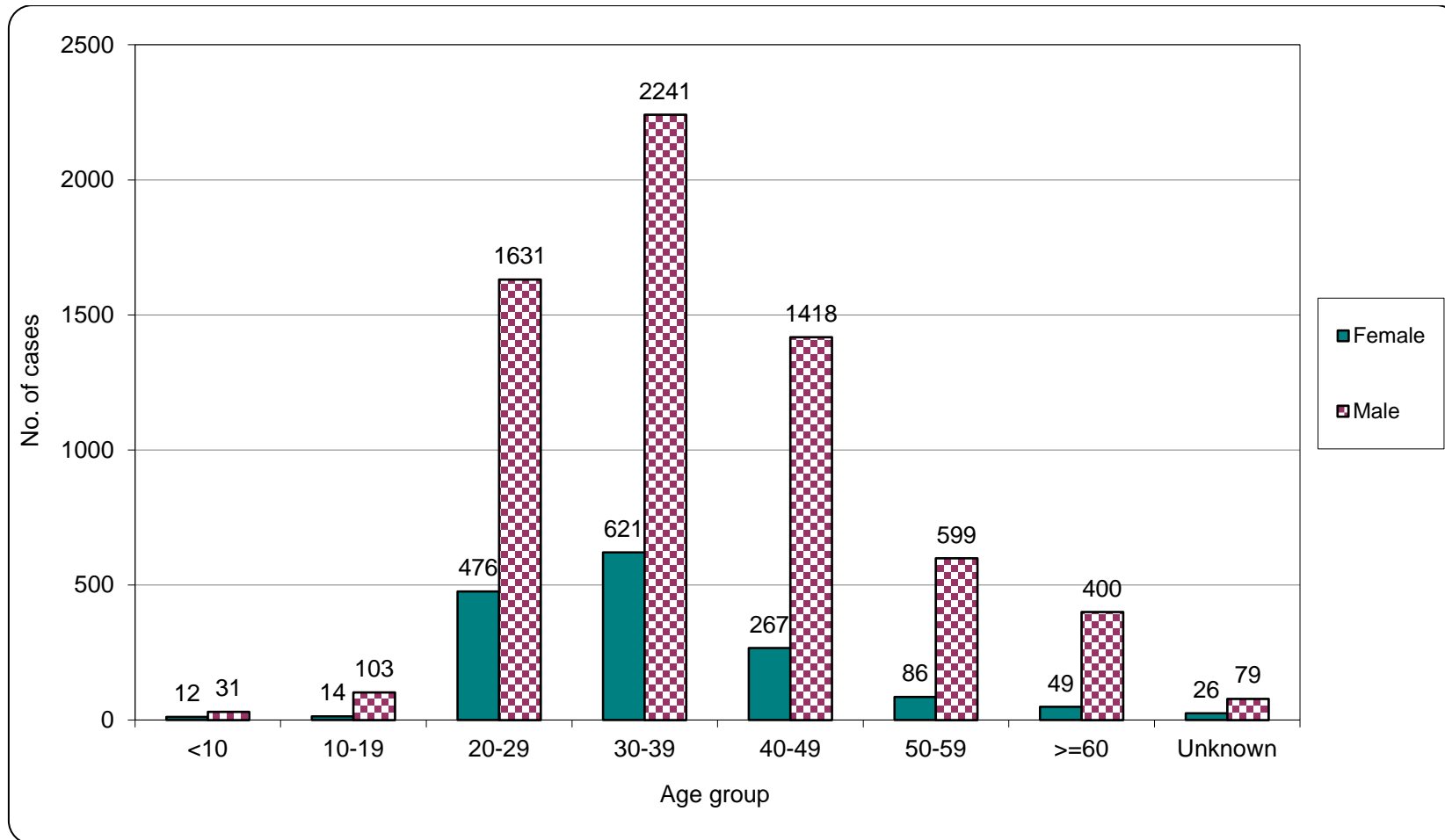
**Table 4.1 Age distribution of reported HIV**

	This quarter (Apr - Jun 2016)	Last quarter (Jan - Mar 2016)	Same quarter last year (Apr - Jun 2015)	Cumulative (1984 – Jun 2016)
Adult	188	147	178	8,002
Child (age 13 or less)	0	0	1	51
<b>Total</b>	<b>188</b>	<b>147</b>	<b>179</b>	<b>8,053</b>

**Chart 4.1 Age distribution of reported HIV**



**Chart 4.2 Age group & gender of total reported HIV**



**Table 4.2 Age distribution of reported AIDS**

	This quarter (Apr - Jun 2016)	Last quarter (Jan - Mar 2016)	Same quarter last year (Apr - Jun 2015)	Cumulative (1984 – Jun 2016)
Adult	28	17	30	1,686
Child (age 13 or less)	0	0	1	14
<b>Total</b>	<b>28</b>	<b>17</b>	<b>31</b>	<b>1,700</b>

**Chart 4.3 Age distribution of reported AIDS**

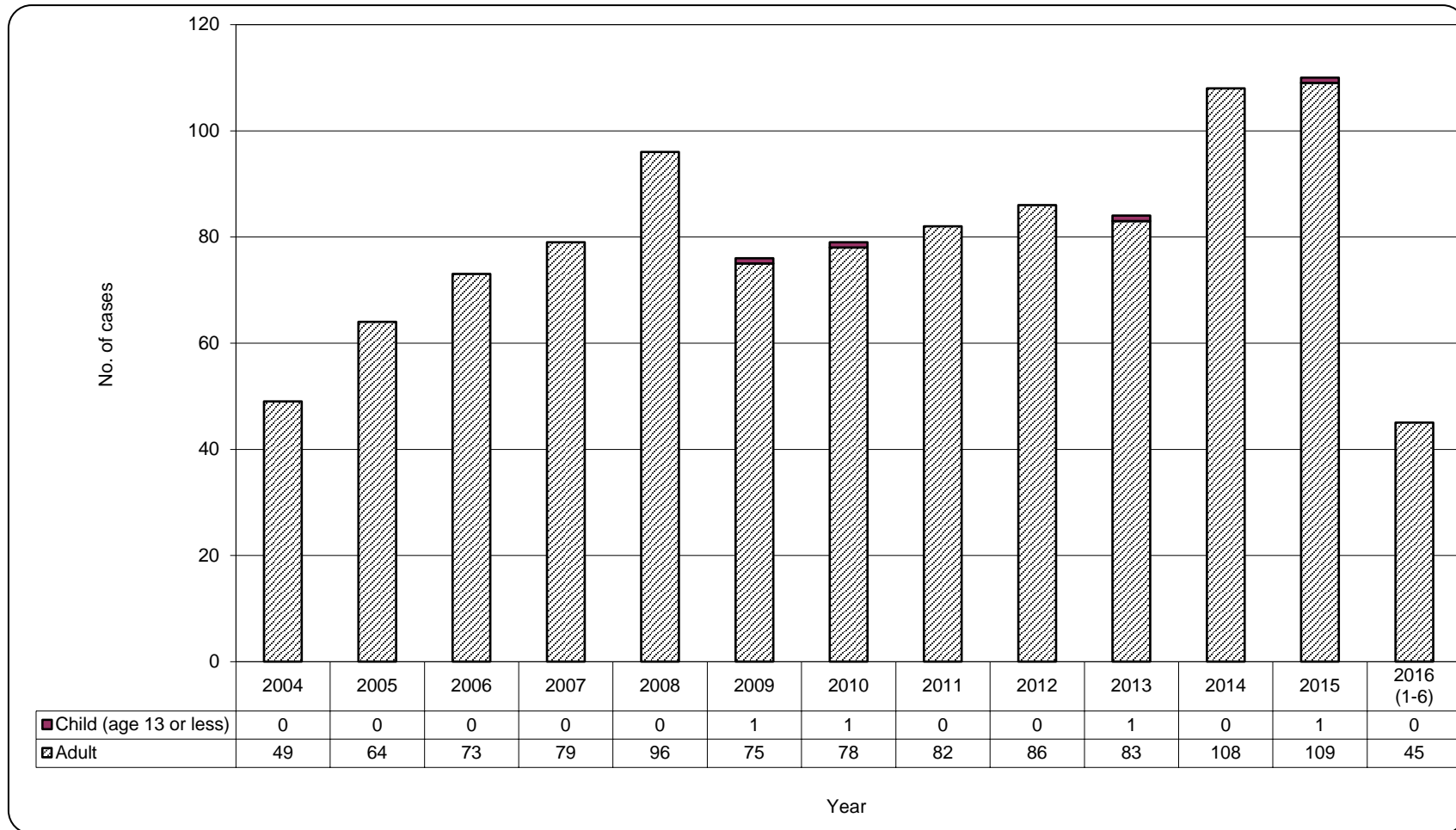
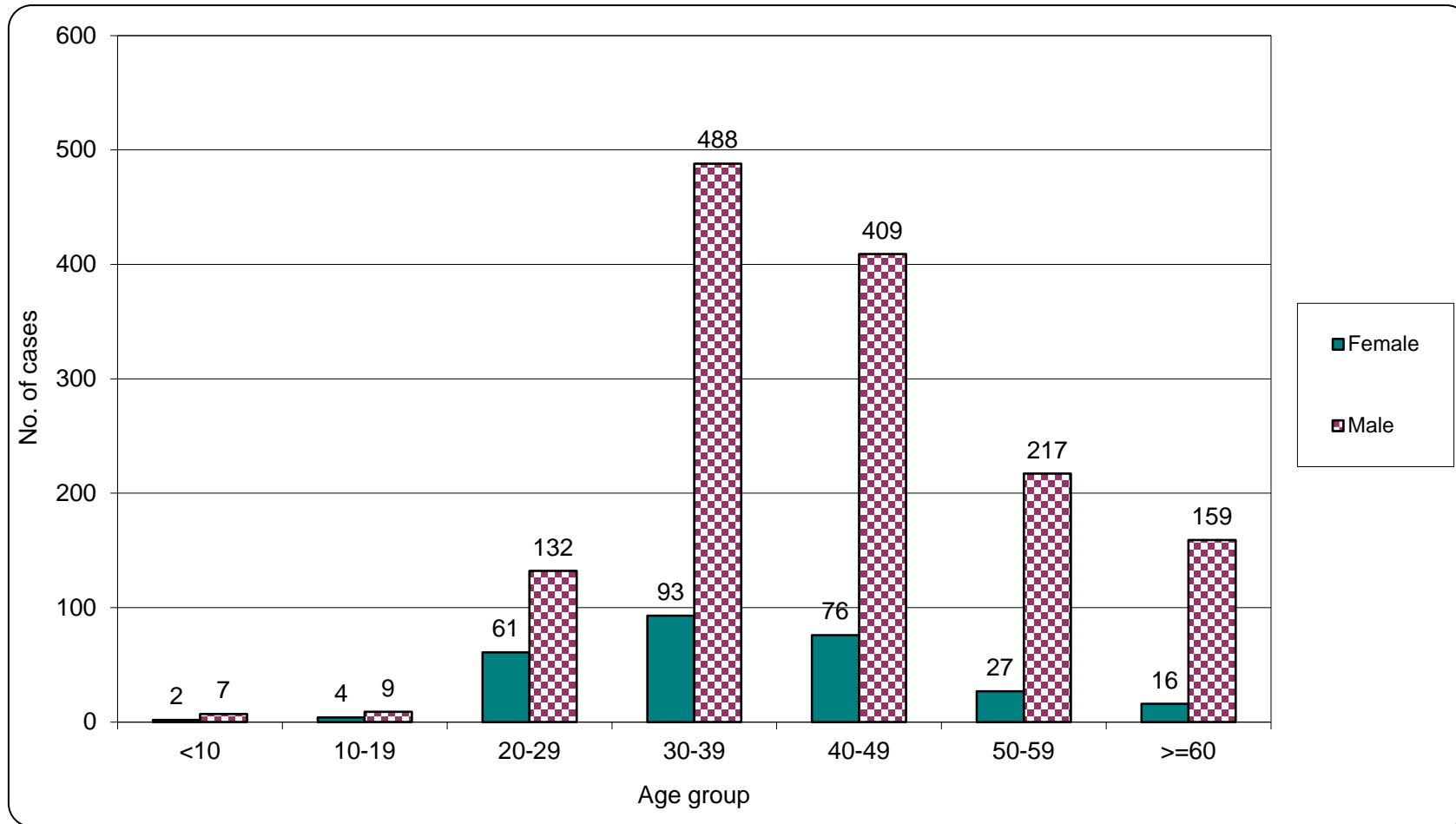


Chart 4.4 Age group & gender of total reported AIDS



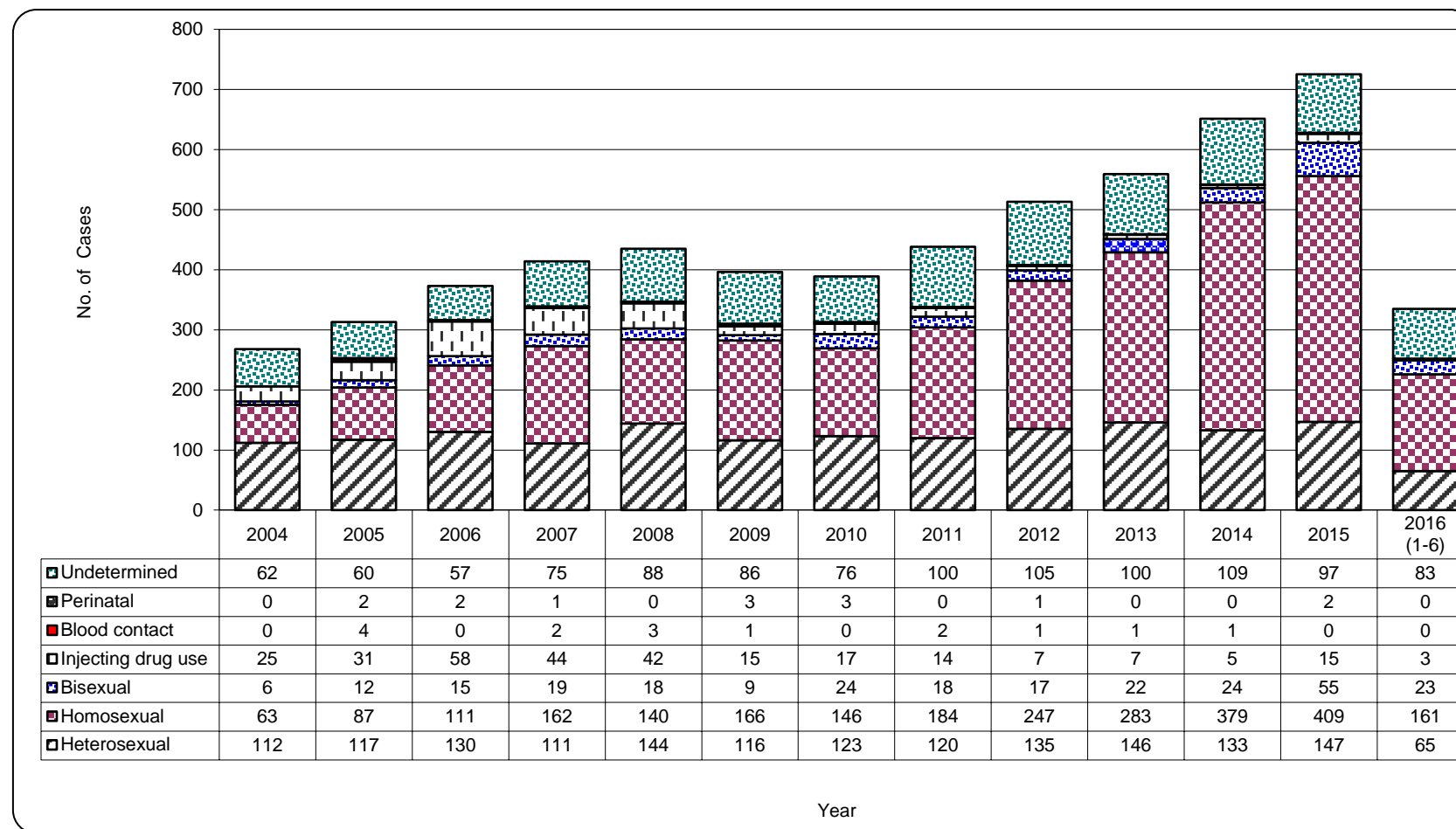
## 5. Exposure categories of reported HIV/AIDS

**Table 5.1 Exposure categories of reported HIV**

	This quarter (Apr - Jun 2016)	Last quarter (Jan - Mar 2016)	Same quarter last year (Apr - Jun 2015)	Cumulative (1984 – Jun 2016)
Heterosexual	35	30	39	2871
Homosexual	86	75	97	2973
Bisexual	12	11	15	362
Injecting drug use	1	2	3	348
Blood / blood product infusion	0	0	0	84
Perinatal	0	0	1	29
Undetermined	54	29	24	1386
<b>Total</b>	<b>188</b>	<b>147</b>	<b>179</b>	<b>8,053</b>



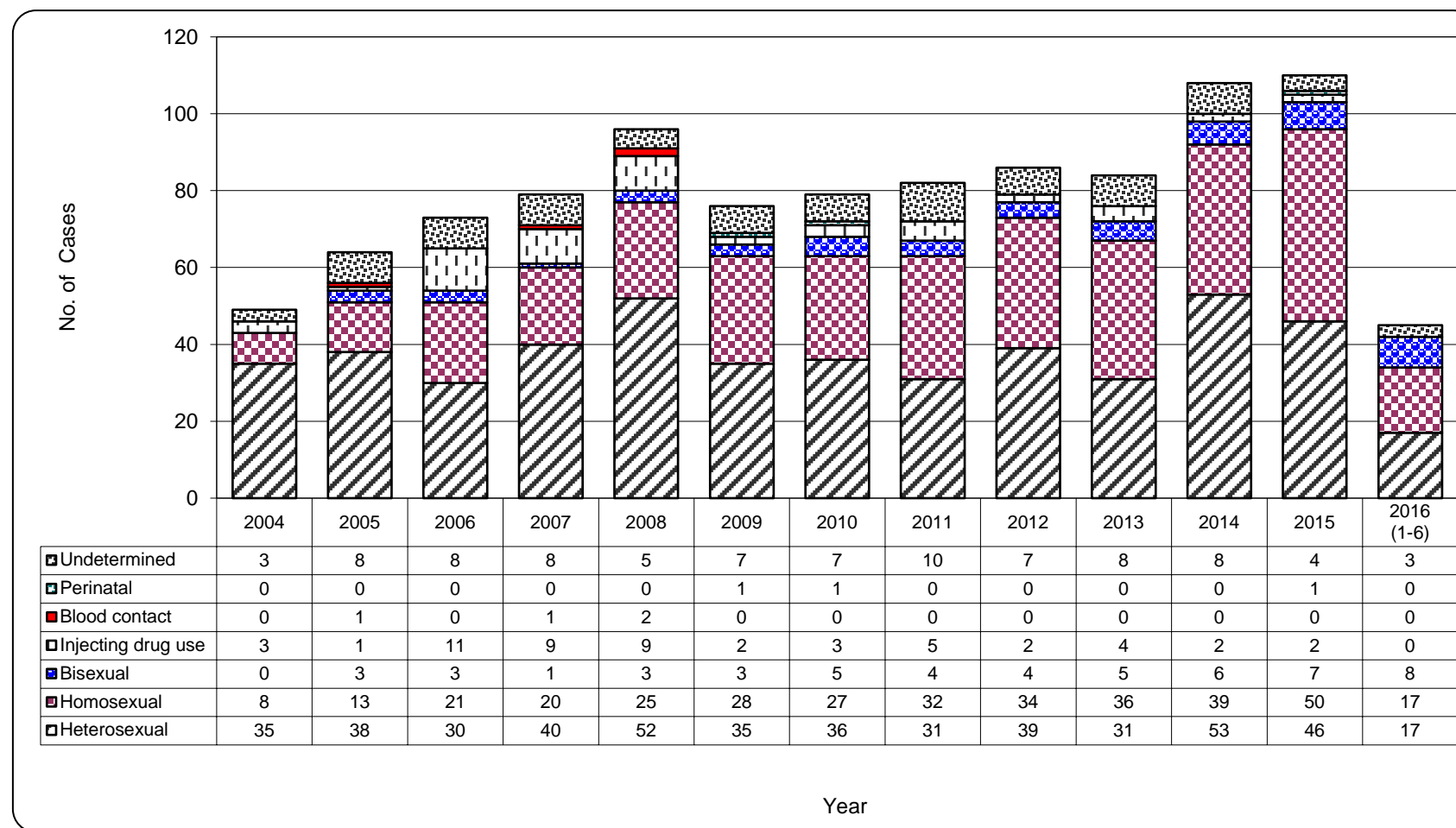
**Chart 5.1 Exposure categories of reported HIV**



**Table 5.2 Exposure categories of reported AIDS**

	This quarter (Apr - Jun 2016)	Last quarter (Jan - Mar 2016)	Same quarter last year (Apr - Jun 2015)	Cumulative (1984 – Jun 2016)
Heterosexual	12	5	15	937
Homosexual	8	9	12	462
Bisexual	5	3	2	82
Injecting drug use	0	0	1	63
Blood / blood product infusion	0	0	0	24
Perinatal	0	0	1	9
Undetermined	3	0	0	123
<b>Total</b>	<b>28</b>	<b>17</b>	<b>31</b>	<b>1,700</b>

Chart 5.2 Exposure categories of reported AIDS



## 6. Ratio (heterosexual : homosexual / bisexual) of sexually acquired HIV infection in men

**Table 6.1 Ratio of sexually acquired infection in men with reported HIV/AIDS (heterosexual : homo / bisexual) by quarter**

	This quarter (Apr - Jun 2016)	Last quarter (Jan - Mar 2016)	Same quarter last year (Apr - Jun 2015)	Cumulative (1984 – Jun 2016)
HIV	0.2 : 1	0.2 : 1	0.2 : 1	<b>0.5 : 1</b>
AIDS	0.6 : 1	0.3 : 1	0.4 : 1	<b>1.3 : 1</b>

**Table 6.2 Ratio of sexually acquired infection in men with reported HIV/AIDS (heterosexual : homo / bisexual) by year**

	2005	2006	2007	2008	2009	2010	2011	2012	2013	2014	2015	2016 (1-6)	1984 – Jun 2016
HIV	0.8 : 1	0.7 : 1	0.4 : 1	0.6 : 1	0.4 : 1	0.4 : 1	0.3 : 1	0.3 : 1	0.2 : 1	0.2 : 1	0.2 : 1	0.2 : 1	<b>0.5 : 1</b>
AIDS	1.8 : 1	0.8 : 1	1.5 : 1	1.4 : 1	0.8 : 1	0.8 : 1	0.4 : 1	0.6 : 1	0.4 : 1	0.7 : 1	0.5 : 1	0.4 : 1	<b>1.3 : 1</b>

## 7. Injecting drug users in reported HIV/AIDS

**Table 7.1 Injecting drug users in reported HIV/AIDS**

	This quarter (Apr - Jun 2016)	Last quarter (Jan - Mar 2016)	Same quarter last year (Apr - Jun 2015)	Cumulative (1984 – Jun 2016)
HIV (% of reported HIV)	1 0.5%	2 1.4%	3 1.7%	<b>348</b> <b>4.3%</b>
AIDS (% of reported AIDS)	0 0.0%	0 0.0%	1 3.2%	<b>63</b> <b>3.7%</b>

**Table 7.2 Number of injecting drug user in reported HIV/AIDS by year**

	2005	2006	2007	2008	2009	2010	2011	2012	2013	2014	2015	2016 (1-6)	1984 – Jun 2016
HIV (% of reported HIV)	31 (9.9%)	58 (15.5%)	44 (10.6%)	42 (9.7%)	15 (3.8%)	17 (4.4%)	14 (3.2%)	7 (1.4%)	7 (1.3%)	5 (0.8%)	15 (2.1%)	3 (0.9%)	<b>348</b> <b>(4.3%)</b>
AIDS (% of reported AIDS)	1 (1.6%)	11 (15.1%)	9 (11.4%)	9 (9.4%)	2 (2.6%)	3 (3.8%)	5 (6.1%)	2 (2.3%)	4 (4.8%)	2 (1.9%)	2 (1.8%)	0 (0.0%)	<b>63</b> <b>(3.7%)</b>

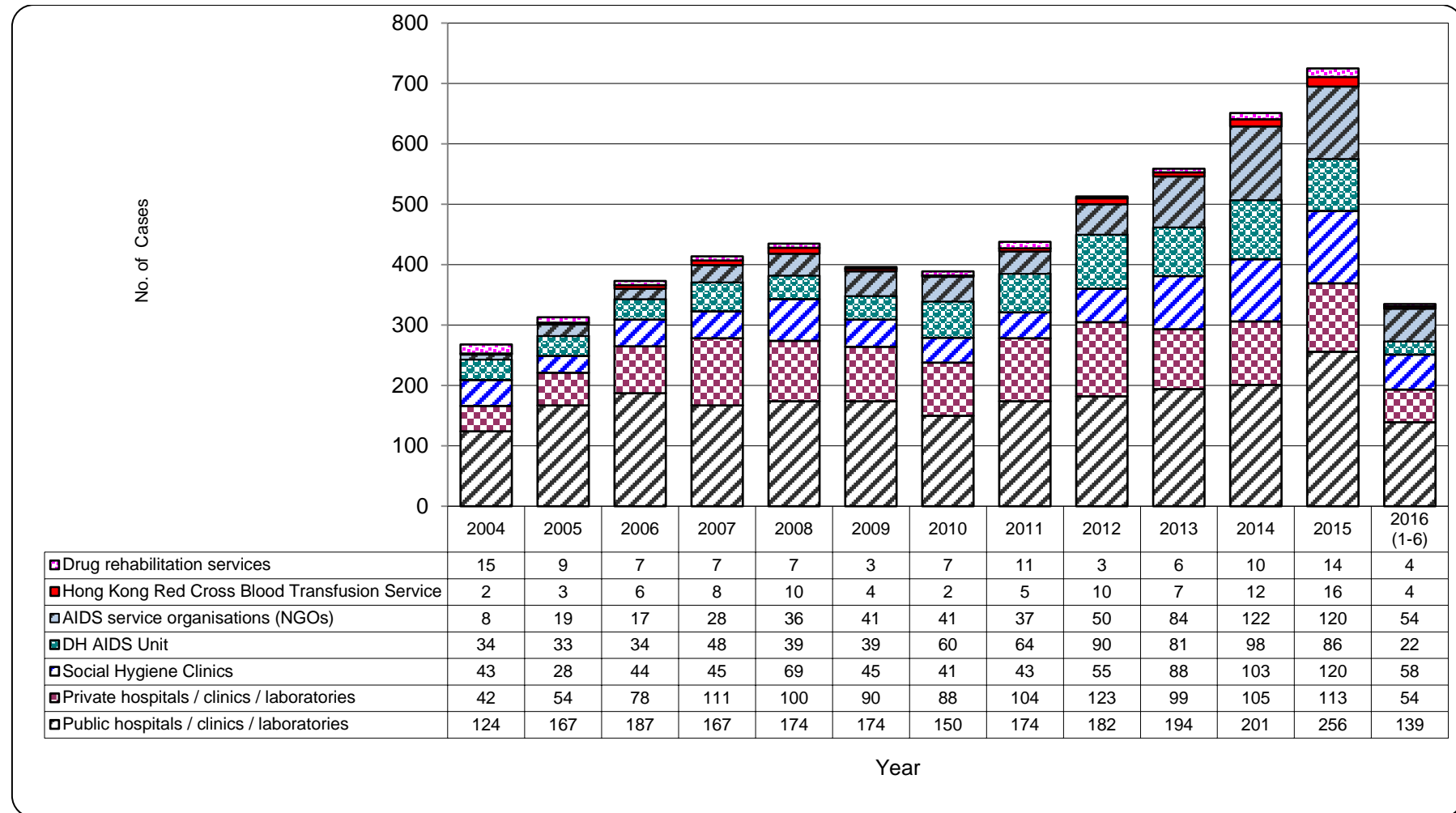
## 8. Source of referral of reported HIV/AIDS

**Table 8.1 Source of referral of reported HIV**

	This quarter (Apr - Jun 2016)	Last quarter (Jan - Mar 2016)	Same quarter last year (Apr - Jun 2015)	Cumulative (1984 – Jun 2016)
Public hospitals / clinics / laboratories	73	66	66	3262
Private hospitals / clinics / laboratories	38	16	34	1673
Social Hygiene Clinics	34	24	31	1130
DH AIDS unit	11	11	17	1027
AIDS service organisations (NGOs)	28	26	25	688
Hong Kong Red Cross Blood Transfusion Service	2	2	3	149
Drug rehabilitation services	2	2	3	124
<b>Total</b>	<b>188</b>	<b>147</b>	<b>179</b>	<b>8,053</b>



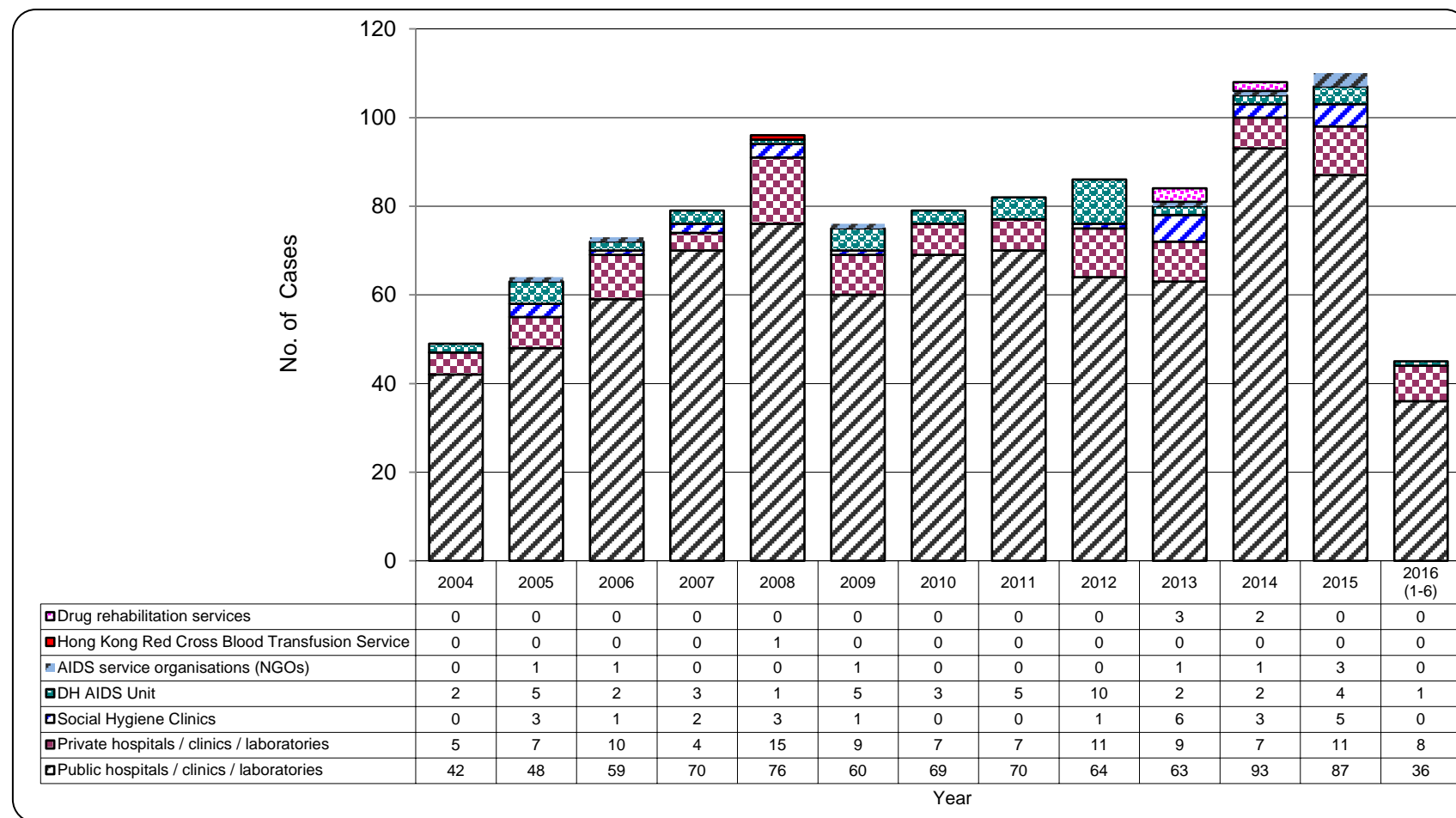
Chart 8.1 Source of referral of reported HIV



**Table 8.2 Source of referral of reported AIDS**

	This quarter (Apr - Jun 2016)	Last quarter (Jan - Mar 2016)	Same quarter last year (Apr - Jun 2015)	Cumulative (1984 – Jun 2016)
Public hospitals / clinics / laboratories	20	16	27	1289
Private hospitals / clinics / laboratories	7	1	0	227
Social Hygiene Clinics	0	0	1	60
DH AIDS unit	1	0	2	98
AIDS service organisations (NGOs)	0	0	1	11
Hong Kong Red Cross Blood Transfusion Service	0	0	0	9
Drug rehabilitation services	0	0	0	6
<b>Total</b>	<b>28</b>	<b>17</b>	<b>31</b>	<b>1,700</b>

Chart 8.2 Source of referral of Reported AIDS

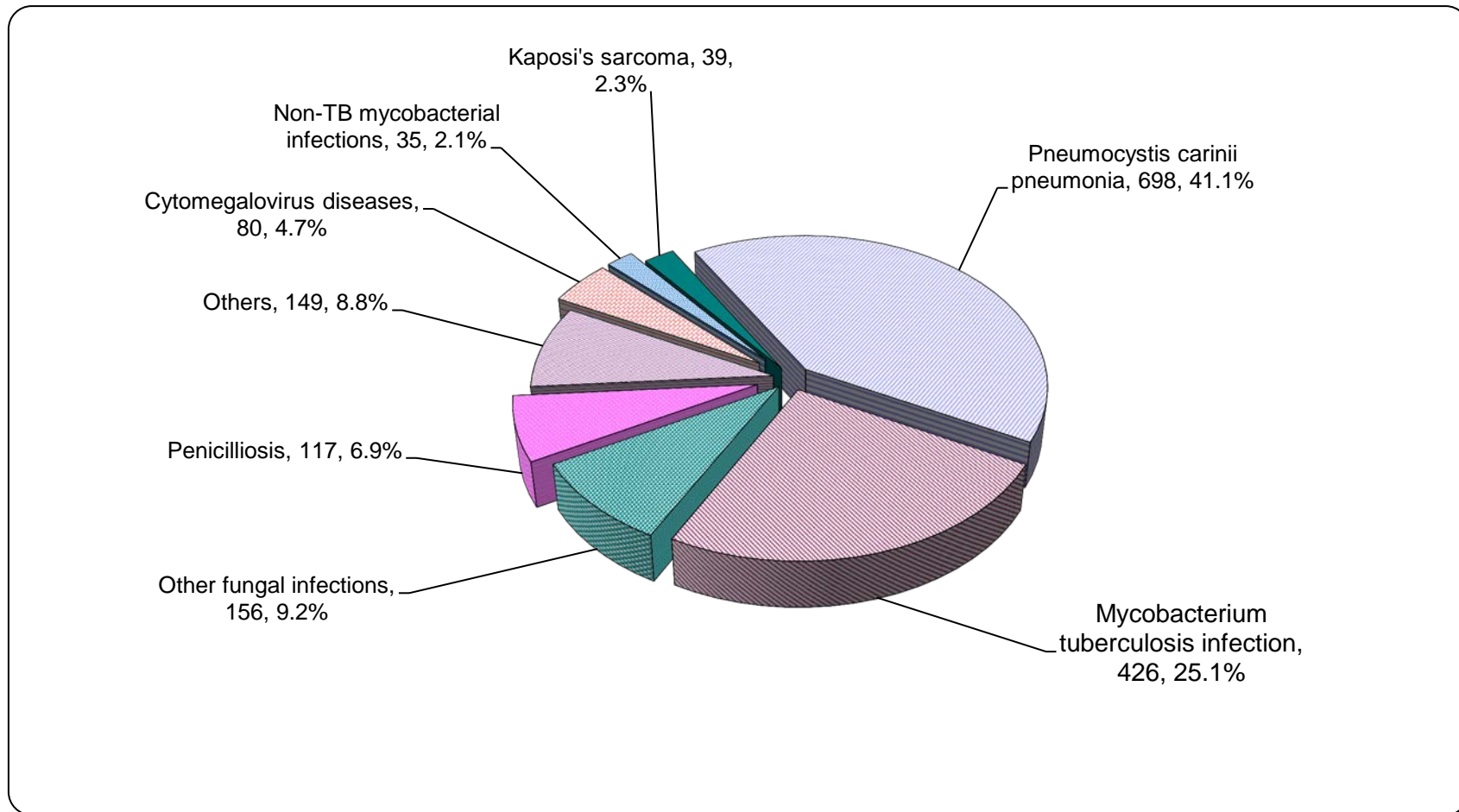


## 9. Distribution of AIDS defining illnesses

**Table 9.1 Distribution of AIDS defining illness of reported AIDS**

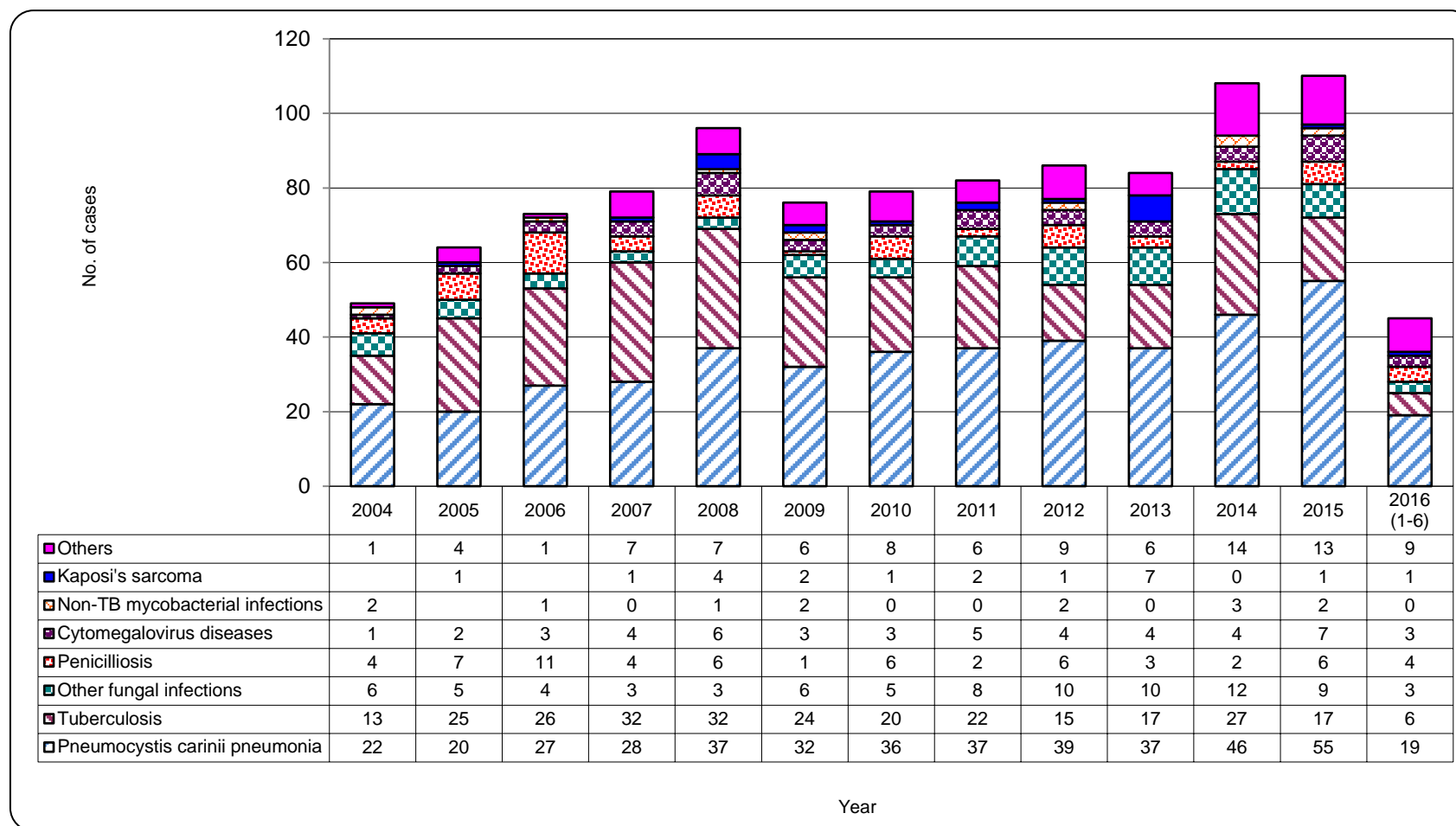
	This quarter (Apr - Jun 2016)	Last quarter (Jan - Mar 2016)	Same quarter last year (Apr - Jun 2015)	Cumulative (1984 – Jun 2016)
<i>Pneumocystis carinii pneumonia</i>	11	8	18	698
<i>Mycobacterium tuberculosis</i>	4	2	7	426
Other fungal infections	3	0	2	156
Penicilliosis	2	2	0	117
Cytomegalovirus diseases	2	1	1	80
Non-TB mycobacterial infections	0	0	1	35
Kaposi's sarcoma	0	1	0	39
Others	6	3	2	149
<b>Total</b>	<b>28</b>	<b>17</b>	<b>31</b>	<b>1,700</b>

**Chart 9.1 AIDS defining illness of total reported AIDS**



Format: [ ADI; Number; % ]

Chart 9.2 AIDS defining illness of reported AIDS by year



## 10. Reported sexually transmitted infections (STIs) diagnosed in Social Hygiene Service

Table 10.1 Summary table on the reported STIs diagnosed in Social Hygiene Service

	This quarter (Apr - Jun 2016)	Last quarter (Jan - Mar 2016)	Same quarter last year (Apr - Jun 2015)	In year 2015
<b>Syphilis</b>				
<i>Primary</i>	8	12	12	53
<i>Secondary</i>	35	24	56	179
<i>Early latent</i>	44	33	26	130
<i>Late latent</i>	188	156	192	738
<i>Late (cardiovascular / neuro /ocular)</i>	1	0	3	4
<i>Congenital (early)</i>	0	0	0	0
<i>Congenital (late)</i>	0	3	1	3
<b>Syphilis total</b>	<b>276</b>	<b>228</b>	<b>290</b>	<b>1,107</b>

(to be cont'd)

**Table 10.1 (Cont'd)**

	This quarter (Apr - Jun 2016)	Last quarter (Jan - Mar 2016)	Same quarter last year (Apr - Jun 2015)	In year 2015
Gonorrhoea	340	295	327	1,357
Non-gonococcal urethritis (Male)	916	781	851	3,544
Non-specific genital infection (Female)	568	449	572	2,216
Genital wart	493	413	516	1,953
<i>Herpes genitalis</i>	221	179	207	772
Pediculosis pubis	5	9	9	26
Trichomonas	89	65	82	349
Genital ulcer	3	4	0	6
Chancroid / <i>Lymphogranuloma venereum</i>	1	0	0	0
Others	280	265	293	1,451
<b>Total</b>	<b>3,192</b>	<b>2,688</b>	<b>3,147</b>	<b>12,781</b>



## 11. Gender distribution of reported STIs

**Table 11.1 Gender distribution of selected STI reported by Social Hygiene Service**

	This quarter (Apr - Jun 2016)	Last quarter (Jan - Mar 2016)	Same quarter last year (Apr - Jun 2015)	In year 2015
<b>Primary Syphilis</b>				
Male (M)	8	12	12	52
Female (F)	0	0	0	1
<b>M:F</b>	<b>N.A.</b>	<b>N.A.</b>	<b>N.A.</b>	<b>52.0 : 1</b>
<b>Gonorrhoea</b>				
Male (M)	295	252	288	1,191
Female (F)	45	43	39	166
<b>M:F</b>	<b>6.6 : 1</b>	<b>5.9 : 1</b>	<b>7.4 : 1</b>	<b>7.2 : 1</b>
<b>NGU / NSGI *</b>				
Male (M)	916	781	851	3,544
Female (F)	568	449	572	2,216
<b>M:F</b>	<b>1.6 : 1</b>	<b>1.7 : 1</b>	<b>1.5 : 1</b>	<b>1.6 : 1</b>

(to be cont'd)

Table 11.1 (Cont'd)

	This quarter (Apr - Jun 2016)	Last quarter (Jan - Mar 2016)	Same quarter last year (Apr - Jun 2015)	In year 2015
<b>Genital wart</b>				
Male (M)	342	261	373	1,405
Female (F)	151	152	143	548
<b>M:F</b>	<b>2.3 : 1</b>	<b>1.7 : 1</b>	<b>2.6 : 1</b>	<b>2.6 : 1</b>
<b><i>Herpes genitails</i></b>				
Male (M)	136	101	139	515
Female (F)	85	78	68	257
<b>M:F</b>	<b>1.6 : 1</b>	<b>1.3 : 1</b>	<b>2.0 : 1</b>	<b>2.0 : 1</b>

\* NGU = Non-gonococcal urethritis

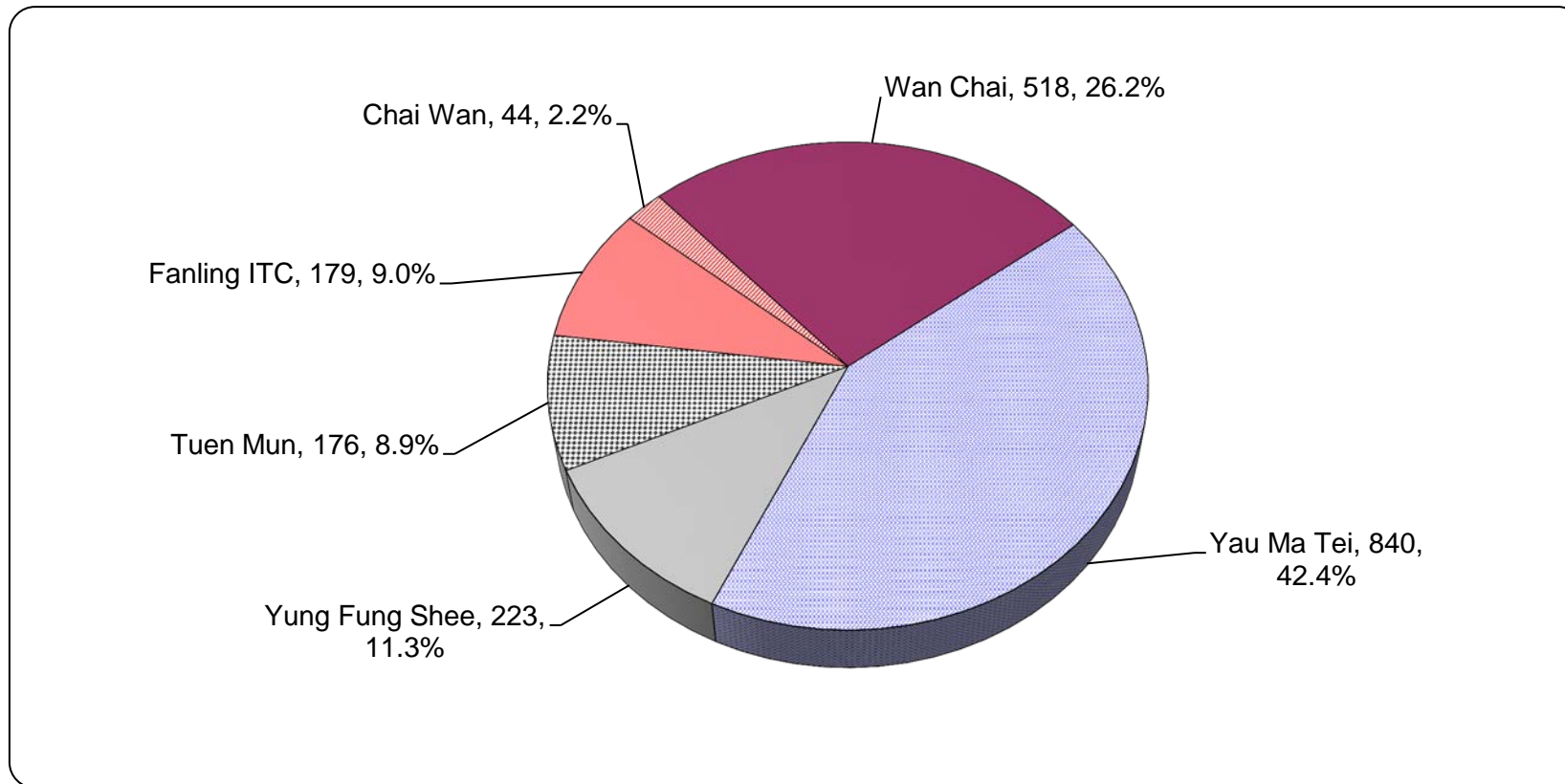
NSGI = Non-specific genital infection

**Table 11.2 Gender distribution of reported STI by clinic**

	This quarter (Apr - Jun 2016)		Last quarter (Jan - Mar 2016)		Same quarter last year (Apr - Jun 2015)		In year 2015	
	Male	Female	Male	Female	Male	Female	Male	Female
Chai Wan	44	32	52	25	52	43	178	158
Wan Chai	518	263	416	260	479	284	2,094	1,117
Yau Ma Tei	840	564	698	500	854	539	3,465	2,134
Yung Fung Shee	223	104	168	82	215	129	905	516
Tuen Mun	176	129	115	104	138	117	590	470
Fanling ITC	179	120	174	94	180	117	745	409
<b>Total</b>	<b>1,980</b>	<b>1,212</b>	<b>1,623</b>	<b>1,065</b>	<b>1,918</b>	<b>1,229</b>	<b>7,977</b>	<b>4,804</b>

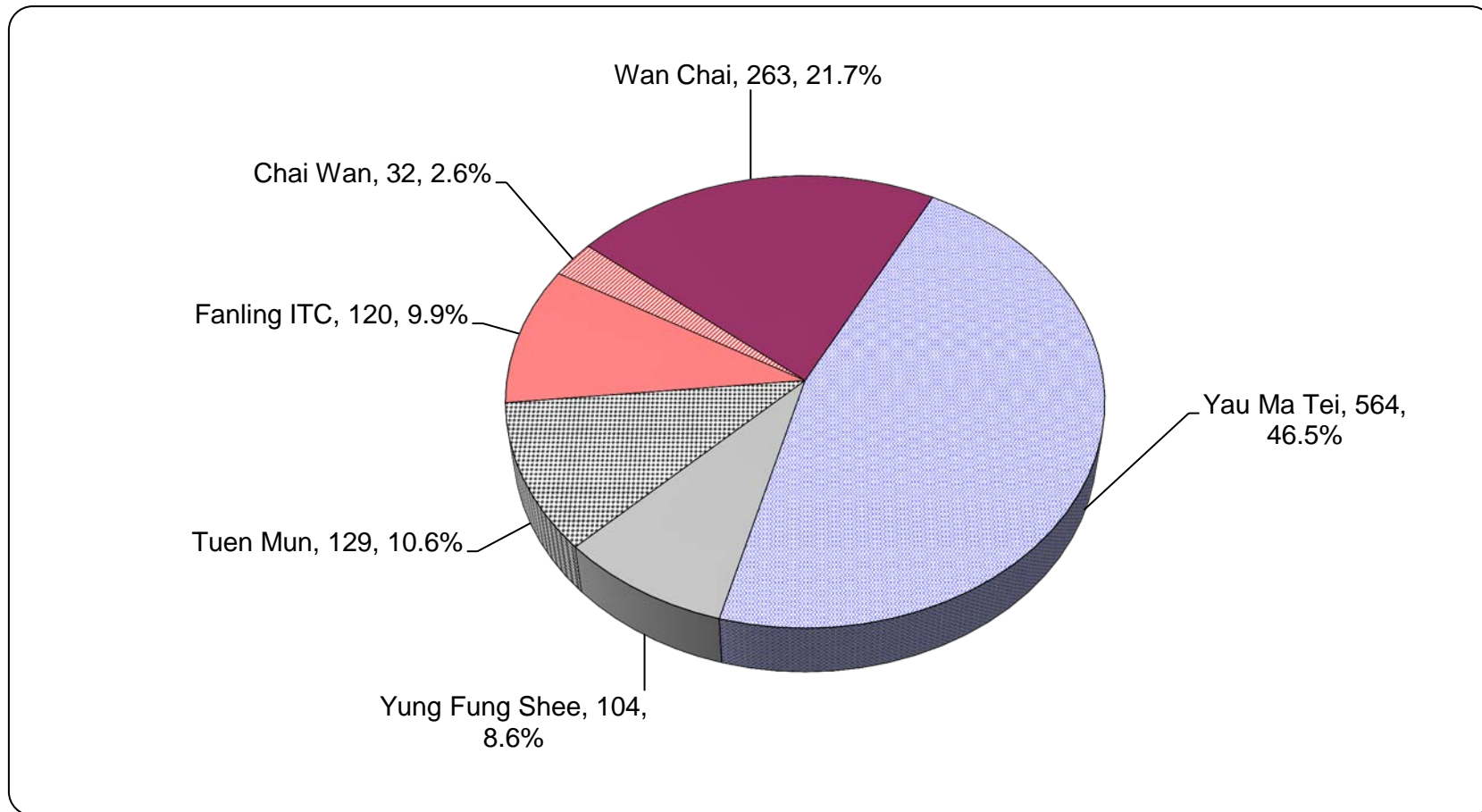
## 12. Clinic distribution

Chart 12.1 Number of newly report STI in Q2 2016 by clinic (male clients)



Format : [ Clinic ; Number ; % ]

**Chart 12.2 Number of newly report STI in Q2 2016 by clinic (female clients)**



Format : [ Clinic ; Number ; % ]