



The Hong Kong STD/AIDS update is a composite report on HIV/AIDS reporting and STI caseload statistics published three monthly. The current issue has the updated information up to March 2022.

SPP Surveillance Team:

Dr. Annie LO

Mr. Frankie CHAN

Ms. Shirry WAN

Correspondence to:

Special Preventive Programme,

Centre for Health Protection, Department of Health

c/o Red Ribbon Centre, 2/F Wang Tau Hom Jockey Club Clinic,

200 Junction Road East, Kowloon, Hong Kong

Telephone: (852) 3143 7200 Facsimile: (852) 2338 0534

E-mail: aids@dh.gov.hk

List of Tables / Figures

1. NUMBER OF HIV/AIDS REPORTED	4
TABLE 1.1 SUMMARY TABLE ON THE REPORTED NUMBER OF HIV/AIDS	4
CHART 1.1 NUMBER OF HIV/AIDS REPORTED	7
2. GENDER DISTRIBUTION OF REPORTED HIV/AIDS	8
TABLE 2.1 GENDER DISTRIBUTION OF REPORTED HIV	8
CHART 2.1 GENDER DISTRIBUTION OF REPORTED HIV BY QUARTER	9
CHART 2.2 GENDER DISTRIBUTION OF REPORTED HIV BY YEAR	10
TABLE 2.2 GENDER DISTRIBUTION OF REPORTED AIDS	11
CHART 2.3 GENDER DISTRIBUTION OF REPORTED AIDS BY QUARTER	12
CHART 2.4 GENDER DISTRIBUTION OF REPORTED AIDS BY YEAR	13
3. ETHNICITY OF REPORTED HIV/AIDS	14
TABLE 3.1 DISTRIBUTION OF ETHNICITY OF REPORTED HIV	14
CHART 3.1 DISTRIBUTION OF ETHNICITY OF REPORTED HIV	15
TABLE 3.2 DISTRIBUTION OF ETHNICITY OF REPORTED AIDS	16
CHART 3.2 DISTRIBUTION OF ETHNICITY OF REPORTED AIDS	17
4. AGE DISTRIBUTION OF REPORTED HIV/AIDS	18
TABLE 4.1 AGE DISTRIBUTION OF REPORTED HIV	18
CHART 4.1 AGE DISTRIBUTION OF REPORTED HIV	19
CHART 4.2 AGE GROUP & GENDER OF TOTAL REPORTED HIV	20
TABLE 4.2 AGE DISTRIBUTION OF REPORTED AIDS	21
CHART 4.3 AGE DISTRIBUTION OF REPORTED AIDS	22
CHART 4.4 AGE GROUP & GENDER OF TOTAL REPORTED AIDS	23
5. EXPOSURE CATEGORIES OF REPORTED HIV/AIDS	24
TABLE 5.1 EXPOSURE CATEGORIES OF REPORTED HIV	24
CHART 5.1 EXPOSURE CATEGORIES OF REPORTED HIV	25
TABLE 5.2 EXPOSURE CATEGORIES OF REPORTED AIDS	26
CHART 5.2 EXPOSURE CATEGORIES OF REPORTED AIDS	27

6. RATIO (HETEROSEXUAL : HOMOSEXUAL / BISEXUAL) OF SEXUALLY ACQUIRED HIV INFECTION IN MEN	28
TABLE 6.1 RATIO OF SEXUALLY ACQUIRED INFECTION IN MEN WITH REPORTED HIV/AIDS (HETEROSEXUAL : HOMO / BISEXUAL) BY QUARTER	28
TABLE 6.2 RATIO OF SEXUALLY ACQUIRED INFECTION IN MEN WITH REPORTED HIV/AIDS (HETEROSEXUAL : HOMO / BISEXUAL) BY YEAR	29
7. INJECTING DRUG USERS IN REPORTED HIV/AIDS	30
TABLE 7.1 INJECTING DRUG USERS IN REPORTED HIV/AIDS	30
TABLE 7.2 NUMBER OF INJECTING DRUG USER IN REPORTED HIV/AIDS BY YEAR	31
8. SOURCE OF REFERRAL OF REPORTED HIV/AIDS	32
TABLE 8.1 SOURCE OF REFERRAL OF REPORTED HIV	32
CHART 8.1 SOURCE OF REFERRAL OF REPORTED HIV	33
TABLE 8.2 SOURCE OF REFERRAL OF REPORTED AIDS	34
CHART 8.2 SOURCE OF REFERRAL OF REPORTED AIDS	35
9. DISTRIBUTION OF AIDS DEFINING ILLNESSES	36
TABLE 9.1 DISTRIBUTION OF AIDS DEFINING ILLNESS OF REPORTED AIDS	36
CHART 9.1 AIDS DEFINING ILLNESS OF TOTAL REPORTED AIDS	37
CHART 9.2 AIDS DEFINING ILLNESS OF REPORTED AIDS BY YEAR	38
10. REPORTED SEXUALLY TRANSMITTED INFECTIONS (STIS) DIAGNOSED IN SOCIAL HYGIENE SERVICE	39
TABLE 10.1 SUMMARY TABLE ON THE REPORTED STIS DIAGNOSED IN SOCIAL HYGIENE SERVICE	39
11. GENDER DISTRIBUTION OF REPORTED STIS	41
TABLE 11.1 GENDER DISTRIBUTION OF SELECTED STI REPORTED BY SOCIAL HYGIENE SERVICE	41
TABLE 11.2 GENDER DISTRIBUTION OF REPORTED STI BY CLINIC	43
12. CLINIC DISTRIBUTION	44
CHART 12.1 NUMBER OF NEWLY REPORT STI IN Q1 2022 BY CLINIC (MALE CLIENTS)	44
CHART 12.2 NUMBER OF NEWLY REPORT STI IN Q1 2022 BY CLINIC (FEMALE CLIENTS)	45

1. Number of HIV/AIDS reported

Table 1.1 Summary table on the reported number of HIV/AIDS

	This quarter (Jan - Mar 2022)		Last quarter (Oct - Dec 2021)		Same quarter last year (Jan - Mar 2021)		Cumulative (1984 – Mar 2022)	
	HIV	AIDS	HIV	AIDS	HIV	AIDS	HIV	AIDS
Sex								
Male	73	13	86	19	87	21	9,273	1,937
Female	12	5	24	4	14	3	2,044	401
Ethnicity / race								
Chinese	46	12	68	16	76	21	7,877	1,804
Non-Chinese	16	6	22	7	24	3	3,095	534
<i>Asian</i>	14	6	12	5	20	3	1,596	377
<i>White</i>	2	0	6	2	4	0	649	103
<i>Black</i>	0	0	2	0	0	0	266	45
<i>Others</i>	0	0	2	0	0	0	584	9
Unknown	23	0	20	0	1	0	345	0

(to be cont'd)

Table 1.1 (cont'd)

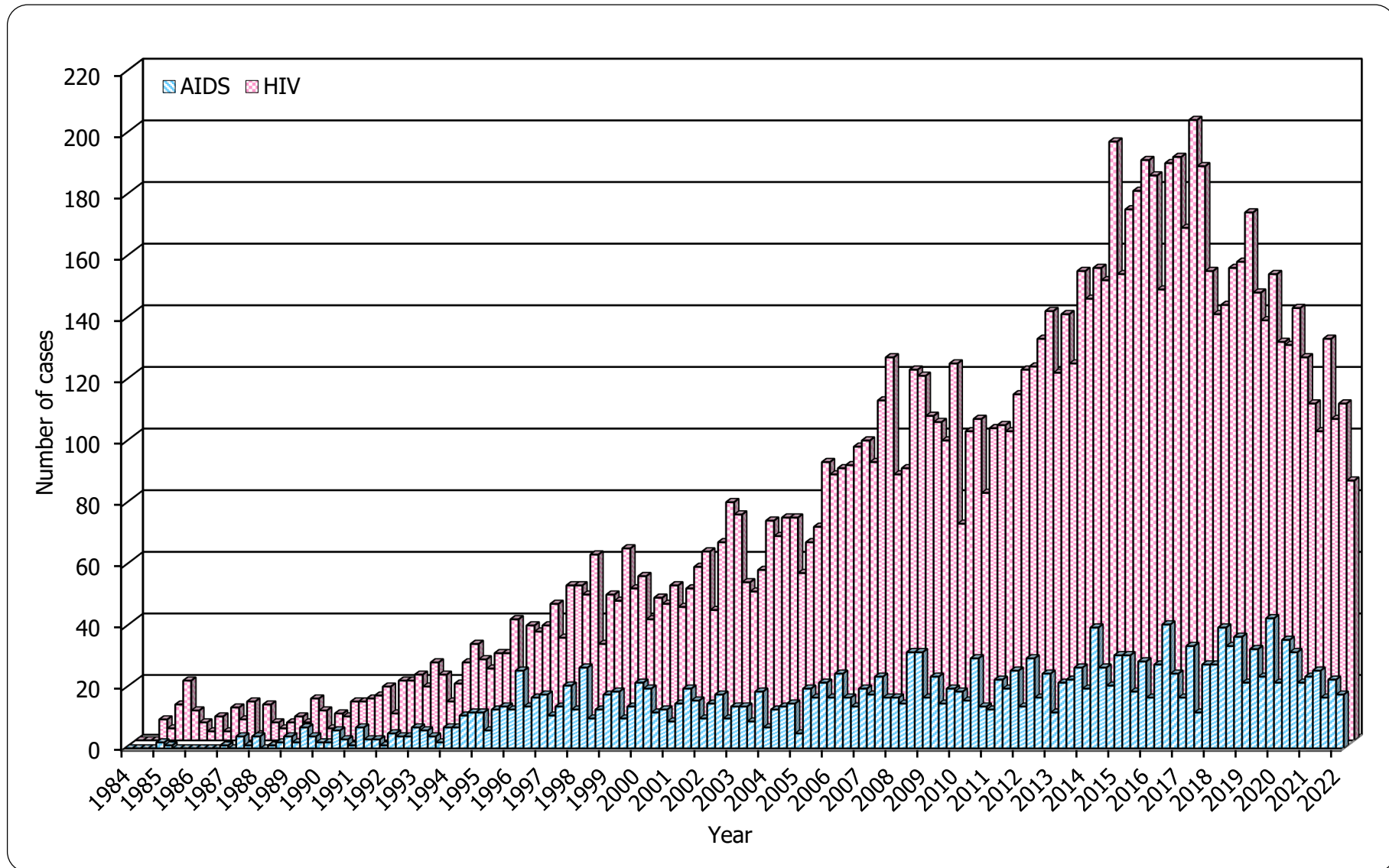
	This quarter (Jan - Mar 2022)		Last quarter (Oct - Dec 2021)		Same quarter last year (Jan - Mar 2021)		Cumulative (1984 – Mar 2022)	
	HIV	AIDS	HIV	AIDS	HIV	AIDS	HIV	AIDS
Age at diagnosis								
Adult	85	18	110	23	101	24	11,262	2,324
Child (age 13 or less)	0	0	0	0	0	0	55	14
Exposure category								
Heterosexual	11	7	35	11	27	9	3,646	1,181
Homosexual	38	6	39	7	49	9	4,705	735
Bisexual	9	3	13	5	12	4	658	163
Injecting drug use	0	0	0	0	0	0	373	68
Blood / blood product infusion	0	0	0	0	0	0	85	25
Perinatal	0	0	0	0	0	0	35	11
Undetermined	27	2	23	0	13	2	1,815	155

(to be cont'd)

Table 1.1 (cont'd)

	This quarter (Jan - Mar 2022)		Last quarter (Oct - Dec 2021)		Same quarter last year (Jan - Mar 2021)		Cumulative (1984 – Mar 2022)	
	HIV	AIDS	HIV	AIDS	HIV	AIDS	HIV	AIDS
Source of referral								
Public hospitals / clinics / laboratories	38	16	51	18	43	22	4,680	1,812
Private hospitals / clinics / laboratories	19	2	18	1	11	1	2,167	293
Social Hygiene Clinics	14	0	14	0	23	0	1,635	79
DH AIDS Unit	12	0	19	2	10	1	1,429	118
AIDS service organisations (NGOs)	1	0	7	1	14	0	1,094	19
Hong Kong Red Cross Blood Transfusion Service	1	0	1	0	0	0	177	10
Drug rehabilitation services	0	0	0	1	0	0	135	7
Total	85	18	110	23	101	24	11,317	2,338

Chart 1.1 Number of HIV/AIDS reported



2. Gender distribution of reported HIV/AIDS

Table 2.1 Gender distribution of reported HIV

	This quarter (Jan - Mar 2022)	Last quarter (Oct - Dec 2021)	Same quarter last year (Jan - Mar 2021)	Cumulative (1984 – Mar 2022)
Male	73	86	87	9,273
Female	12	24	14	2,044
Total	85	110	101	11,317

Chart 2.1 Gender distribution of reported HIV by quarter

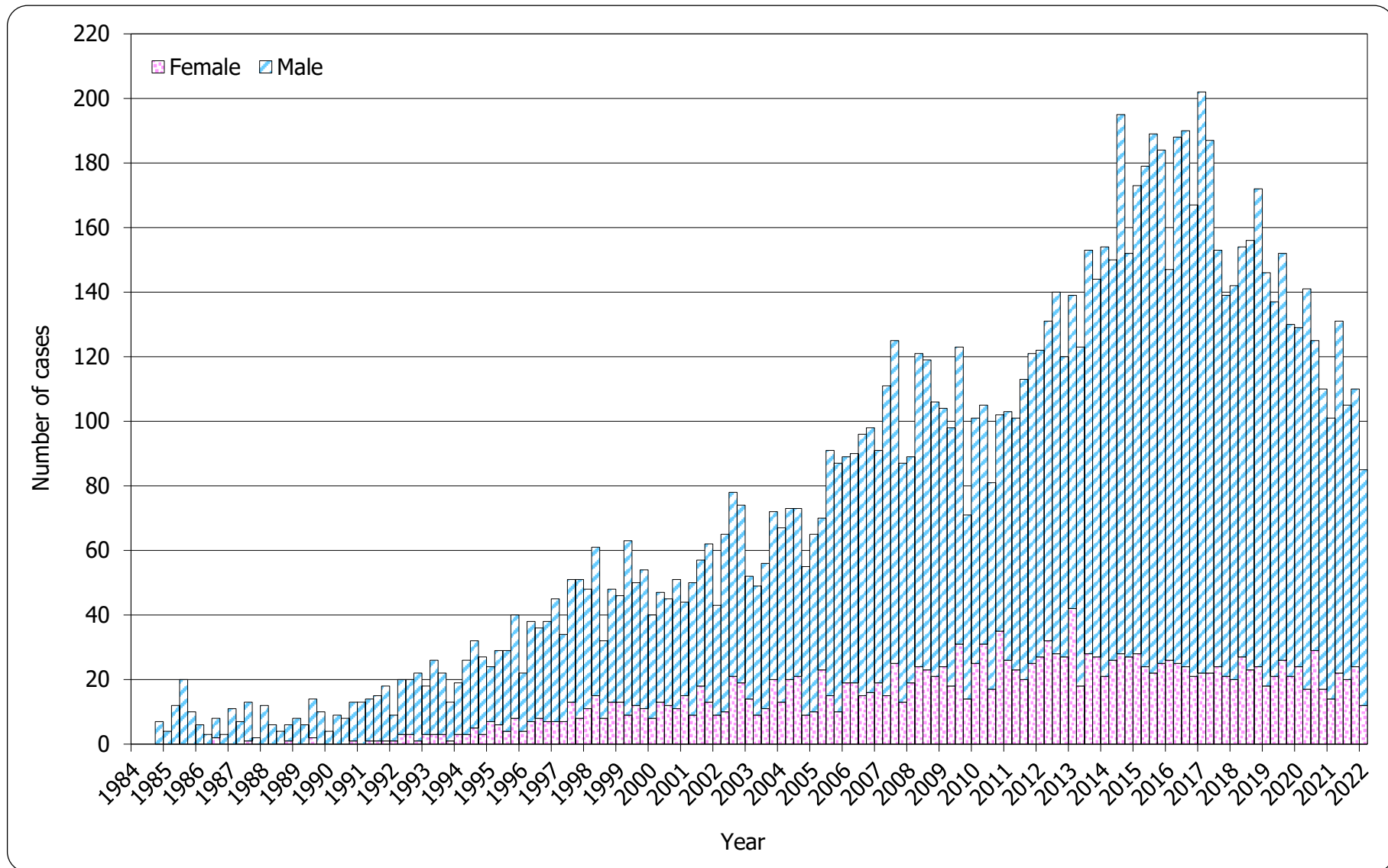


Chart 2.2 Gender distribution of reported HIV by year

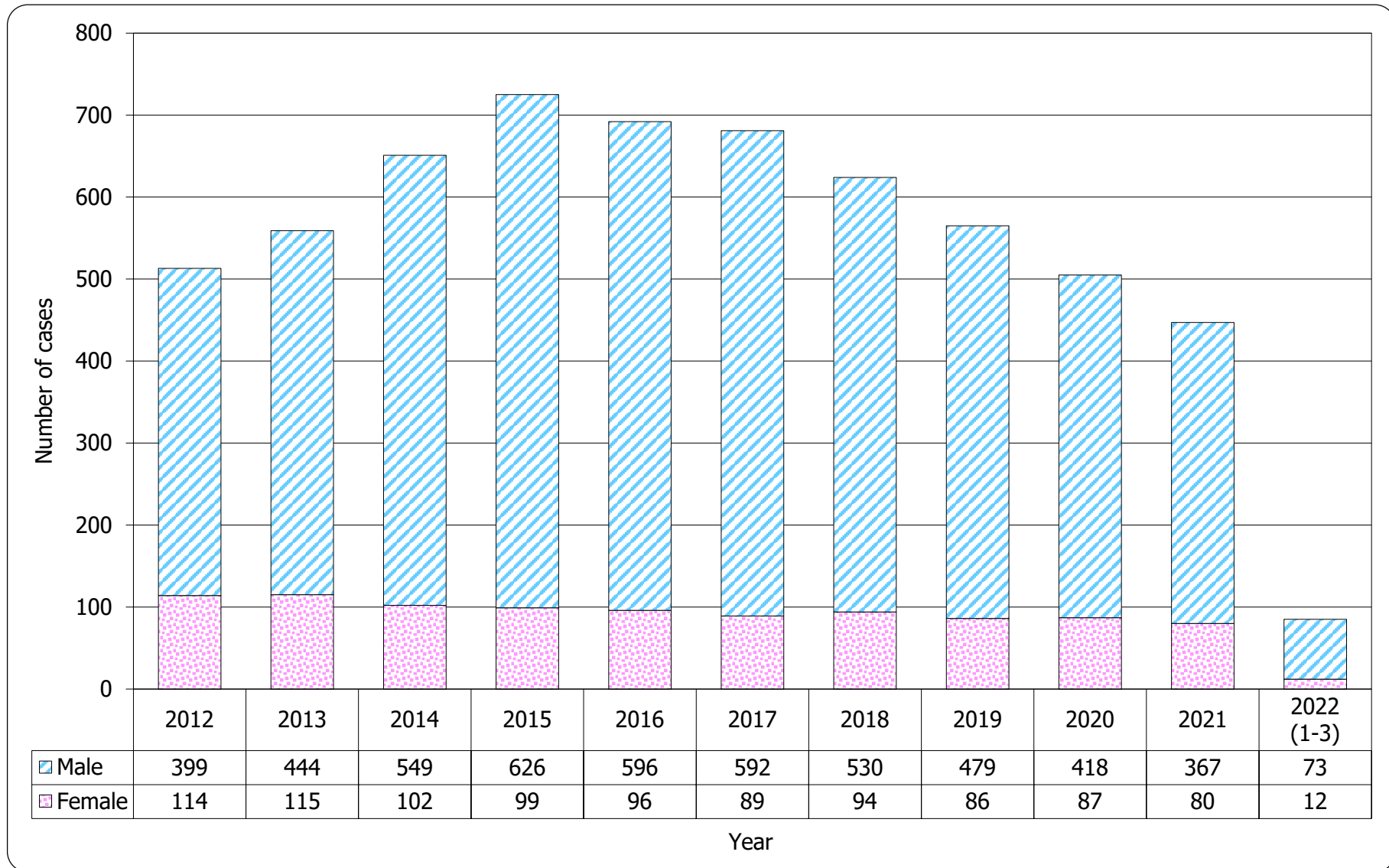


Table 2.2 Gender distribution of reported AIDS

	This quarter (Jan - Mar 2022)	Last quarter (Oct - Dec 2021)	Same quarter last year (Jan - Mar 2021)	Cumulative (1984 – Mar 2022)
Male	13	19	21	1,937
Female	5	4	3	401
Total	18	23	24	2,338

Chart 2.3 Gender distribution of reported AIDS by quarter

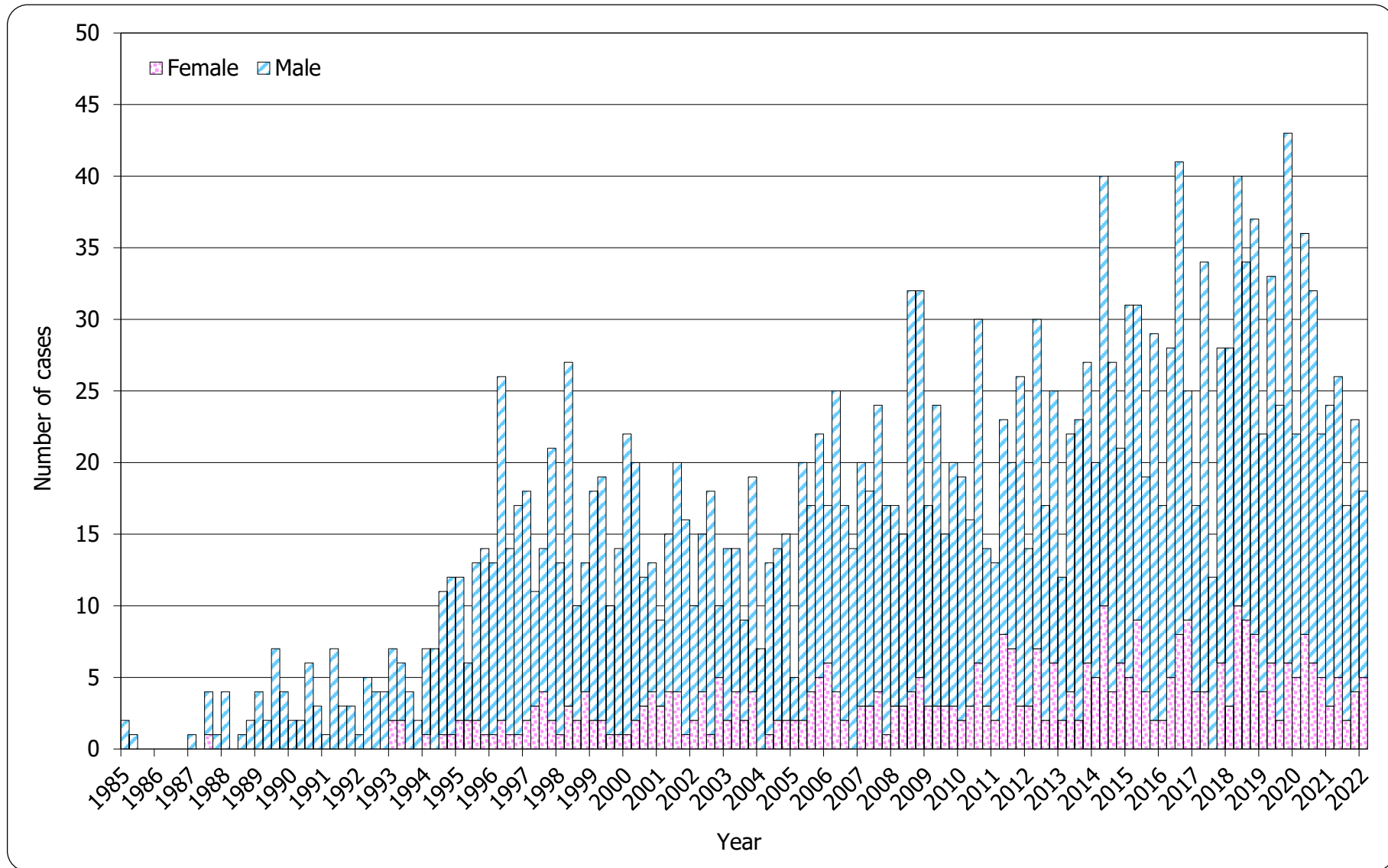
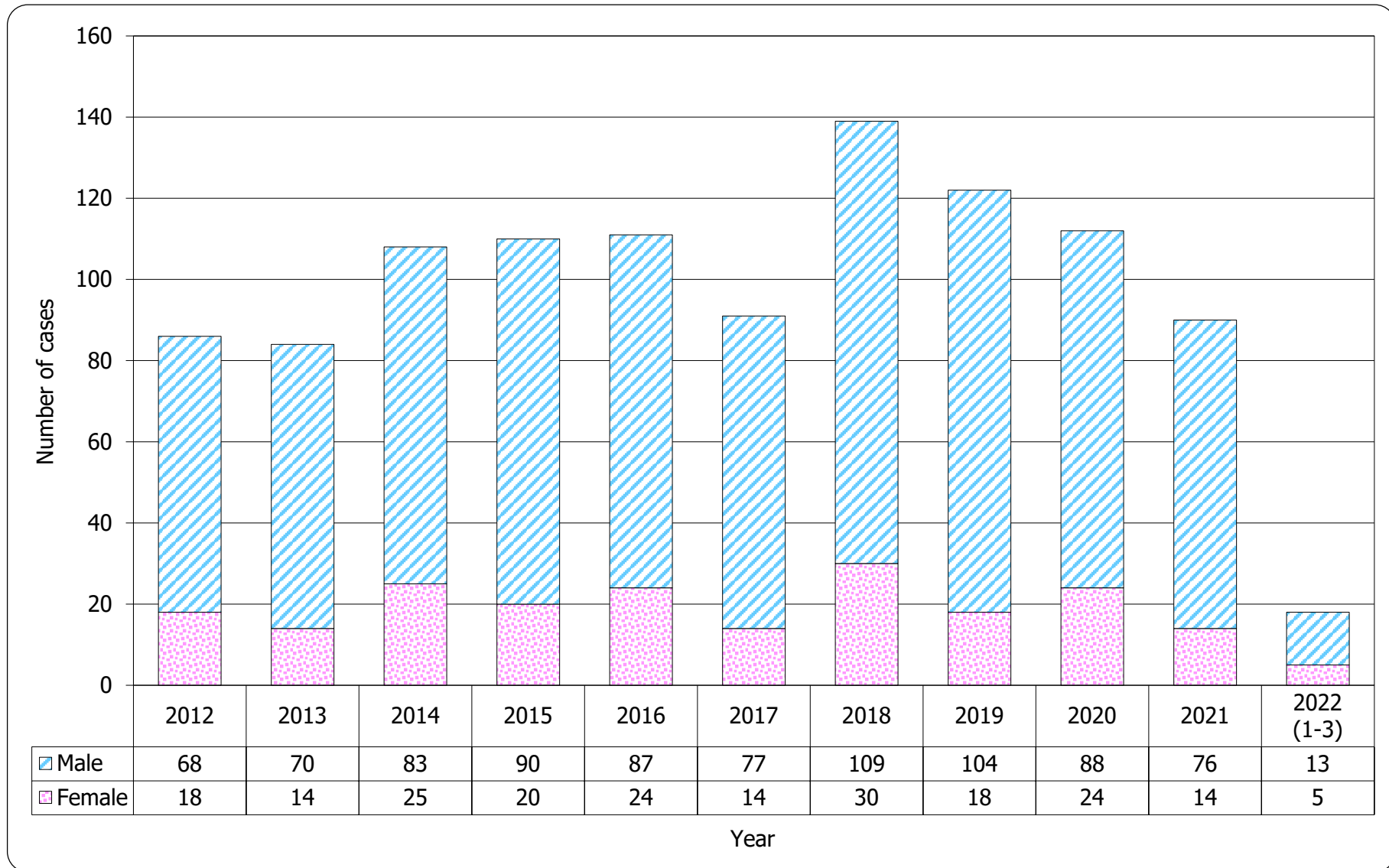


Chart 2.4 Gender distribution of reported AIDS by year



3. Ethnicity of reported HIV/AIDS

Table 3.1 Distribution of ethnicity of reported HIV

	This quarter (Jan - Mar 2022)	Last quarter (Oct - Dec 2021)	Same quarter last year (Jan - Mar 2021)	Cumulative (1984 – Mar 2022)
Chinese	46	68	76	7,877
Non-Chinese	16	22	24	3,095
<i>Asian</i>	14	12	20	1,596
<i>White</i>	2	6	4	649
<i>Black</i>	0	2	0	266
<i>Others</i>	0	2	0	584
Unknown	23	20	1	345
Total	85	110	101	11,317

Chart 3.1 Distribution of ethnicity of reported HIV

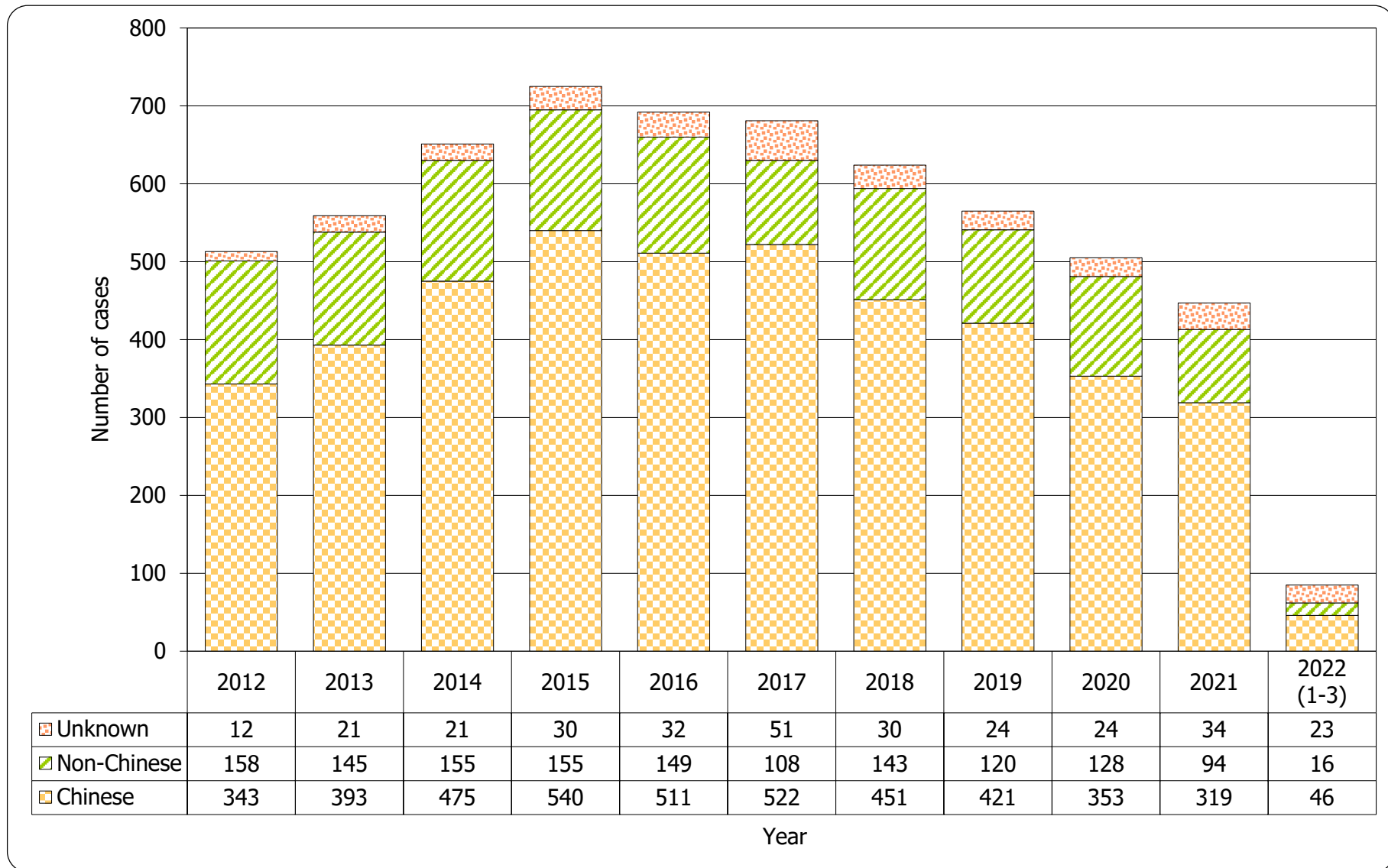
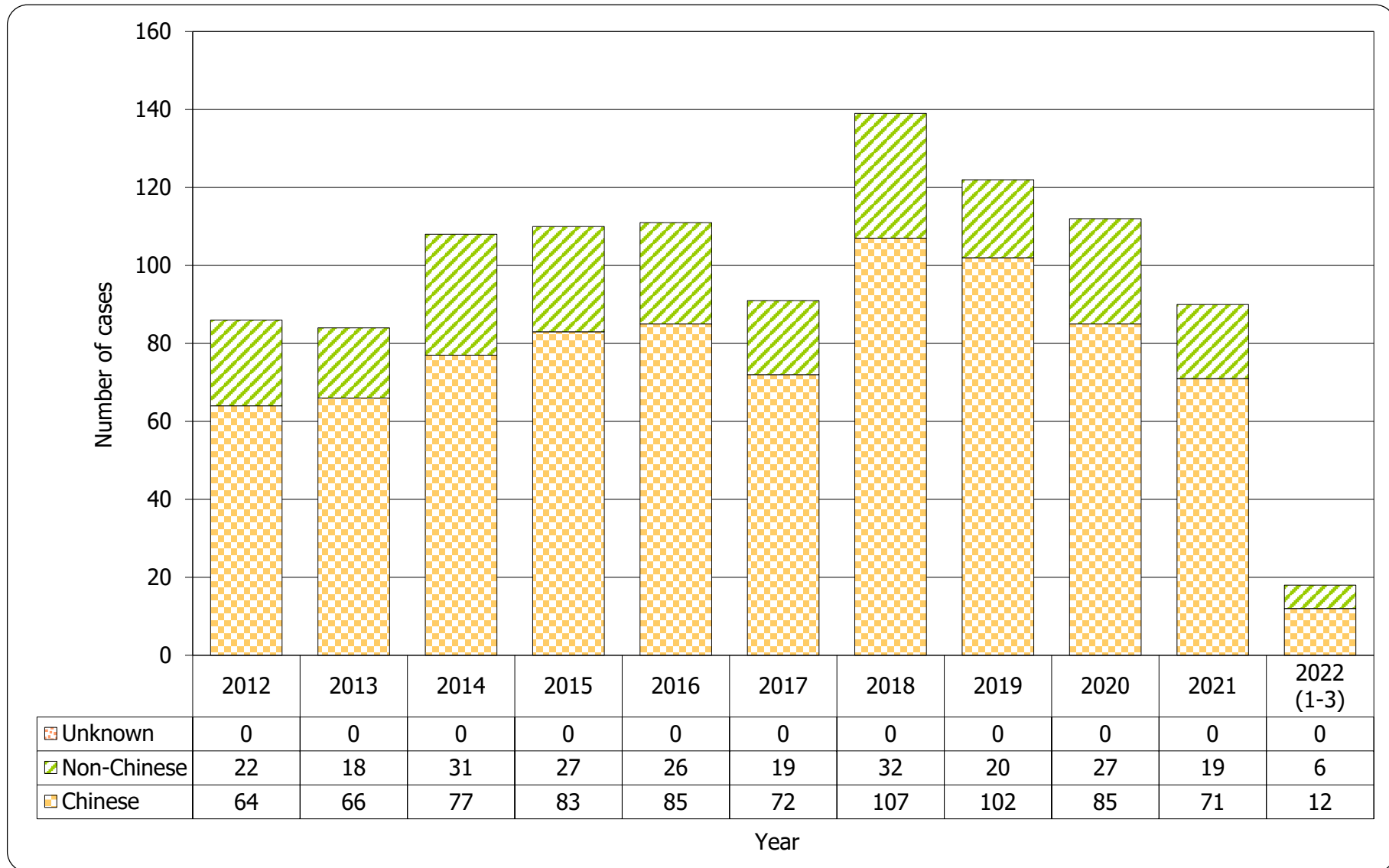


Table 3.2 Distribution of ethnicity of reported AIDS

	This quarter (Jan - Mar 2022)	Last quarter (Oct - Dec 2021)	Same quarter last year (Jan - Mar 2021)	Cumulative (1984 – Mar 2022)
Chinese	12	16	21	1,804
Non-Chinese	6	7	3	534
<i>Asian</i>	6	5	3	377
<i>White</i>	0	2	0	103
<i>Black</i>	0	0	0	45
<i>Others</i>	0	0	0	9
Unknown	0	0	0	0
Total	18	23	24	2,338

Chart 3.2 Distribution of ethnicity of reported AIDS



4. Age distribution of reported HIV/AIDS

Table 4.1 Age distribution of reported HIV

	This quarter (Jan - Mar 2022)	Last quarter (Oct - Dec 2021)	Same quarter last year (Jan - Mar 2021)	Cumulative (1984 – Mar 2022)
Adult	85	110	101	11,262
Child (age 13 or less)	0	0	0	55
Total	85	110	101	11,317

Chart 4.1 Age distribution of reported HIV

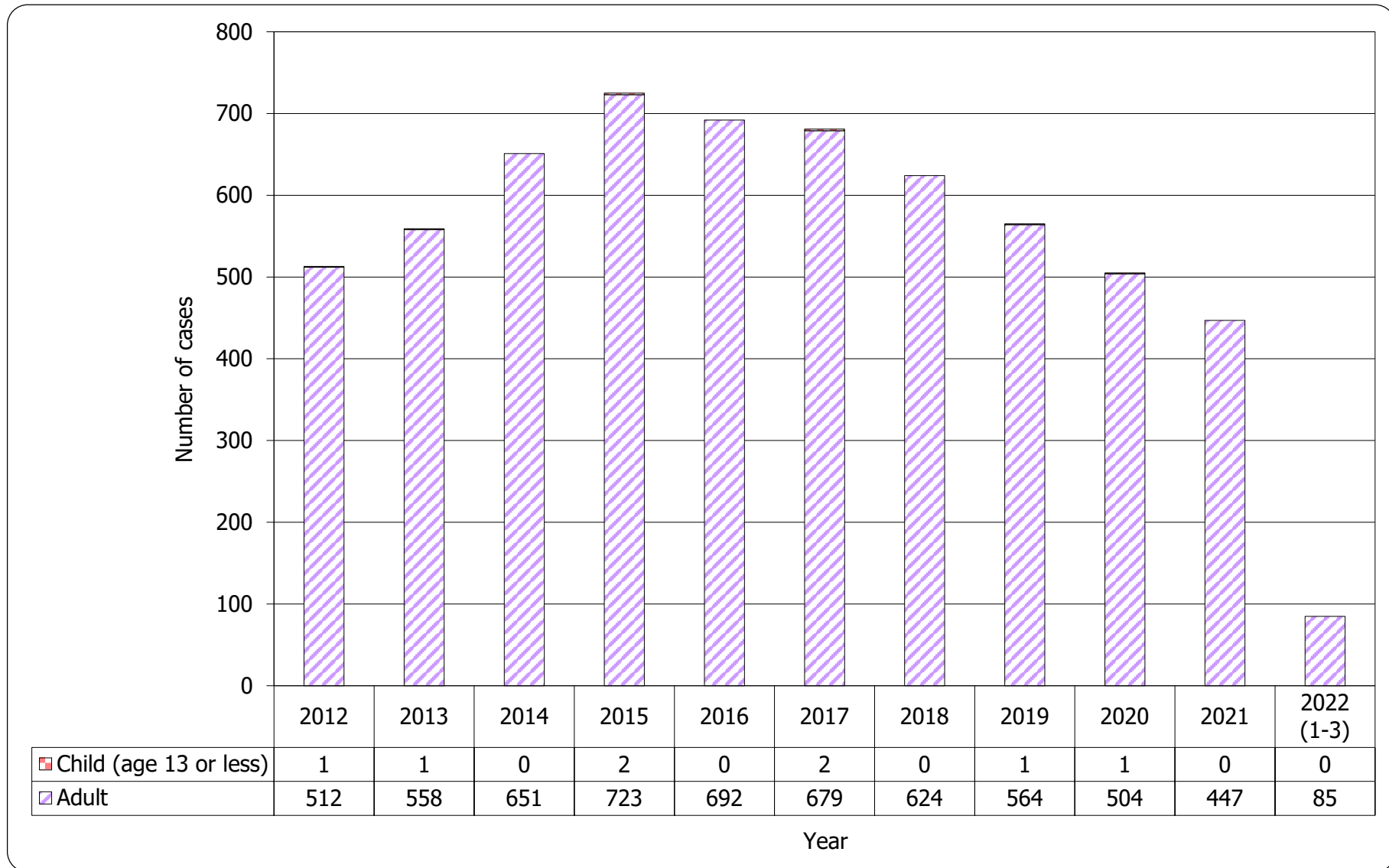


Chart 4.2 Age group & gender of total reported HIV

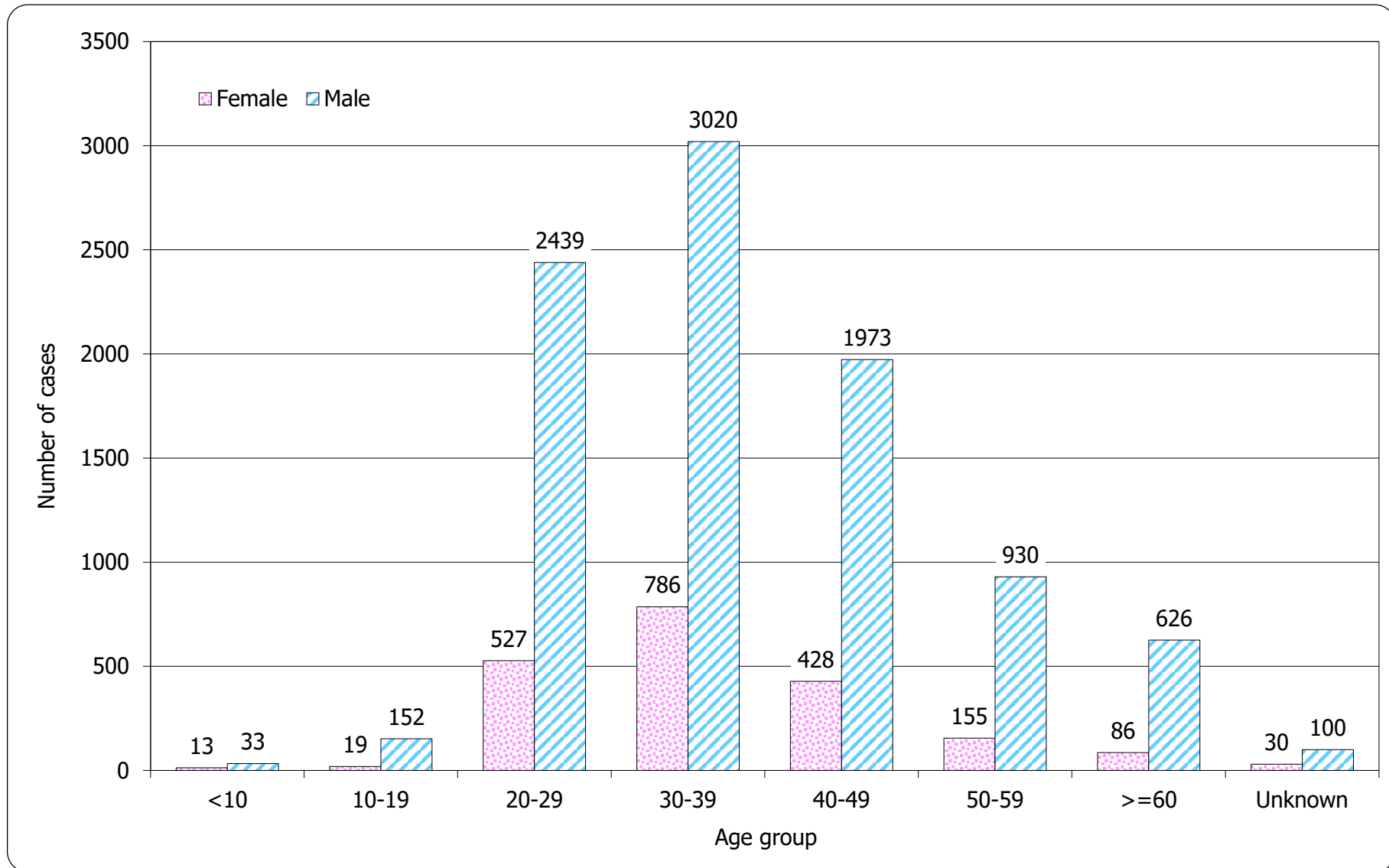


Table 4.2 Age distribution of reported AIDS

	This quarter (Jan - Mar 2022)	Last quarter (Oct - Dec 2021)	Same quarter last year (Jan - Mar 2021)	Cumulative (1984 – Mar 2022)
Adult	18	23	24	2,324
Child (age 13 or less)	0	0	0	14
Total	18	23	24	2,338

Chart 4.3 Age distribution of reported AIDS

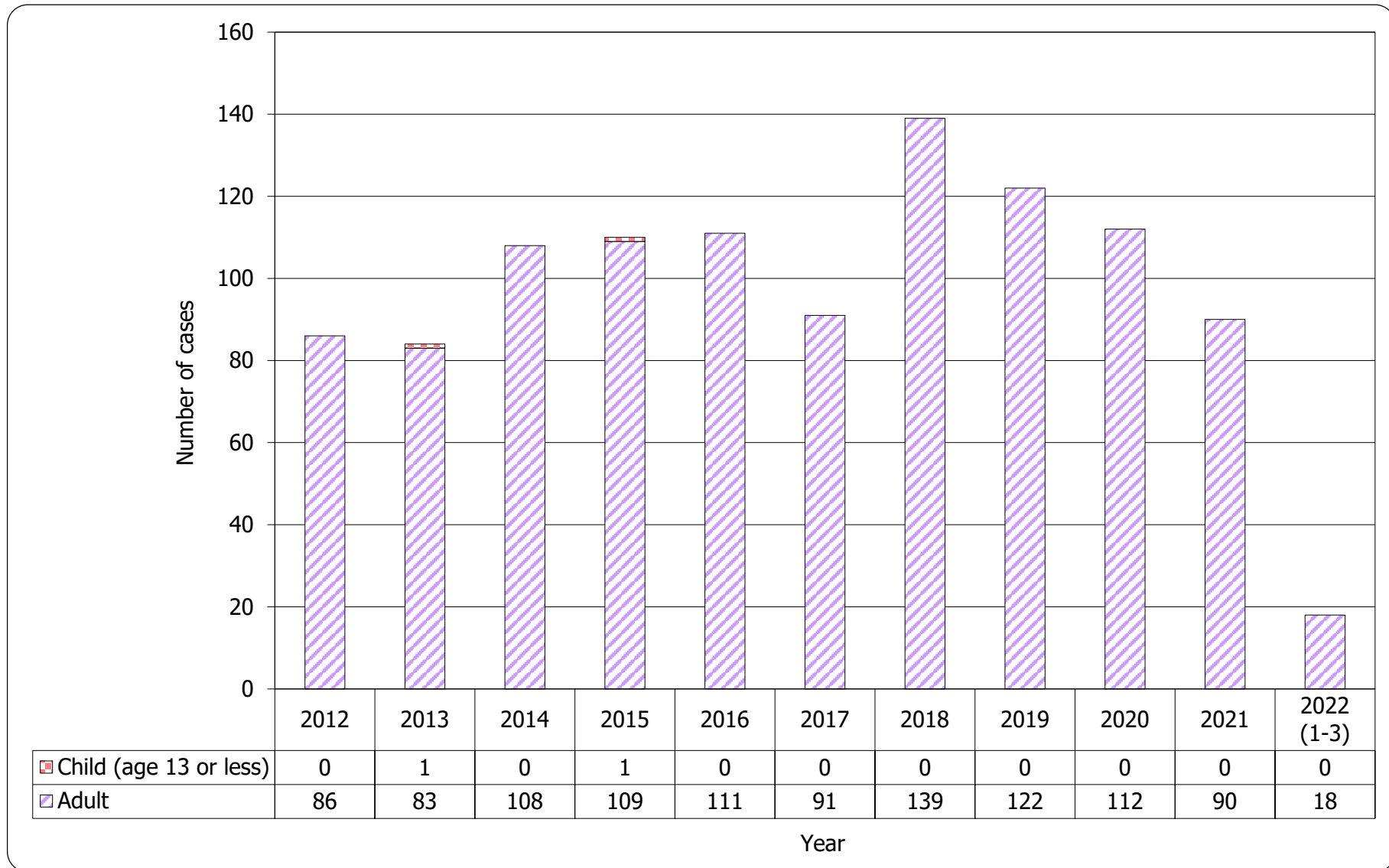
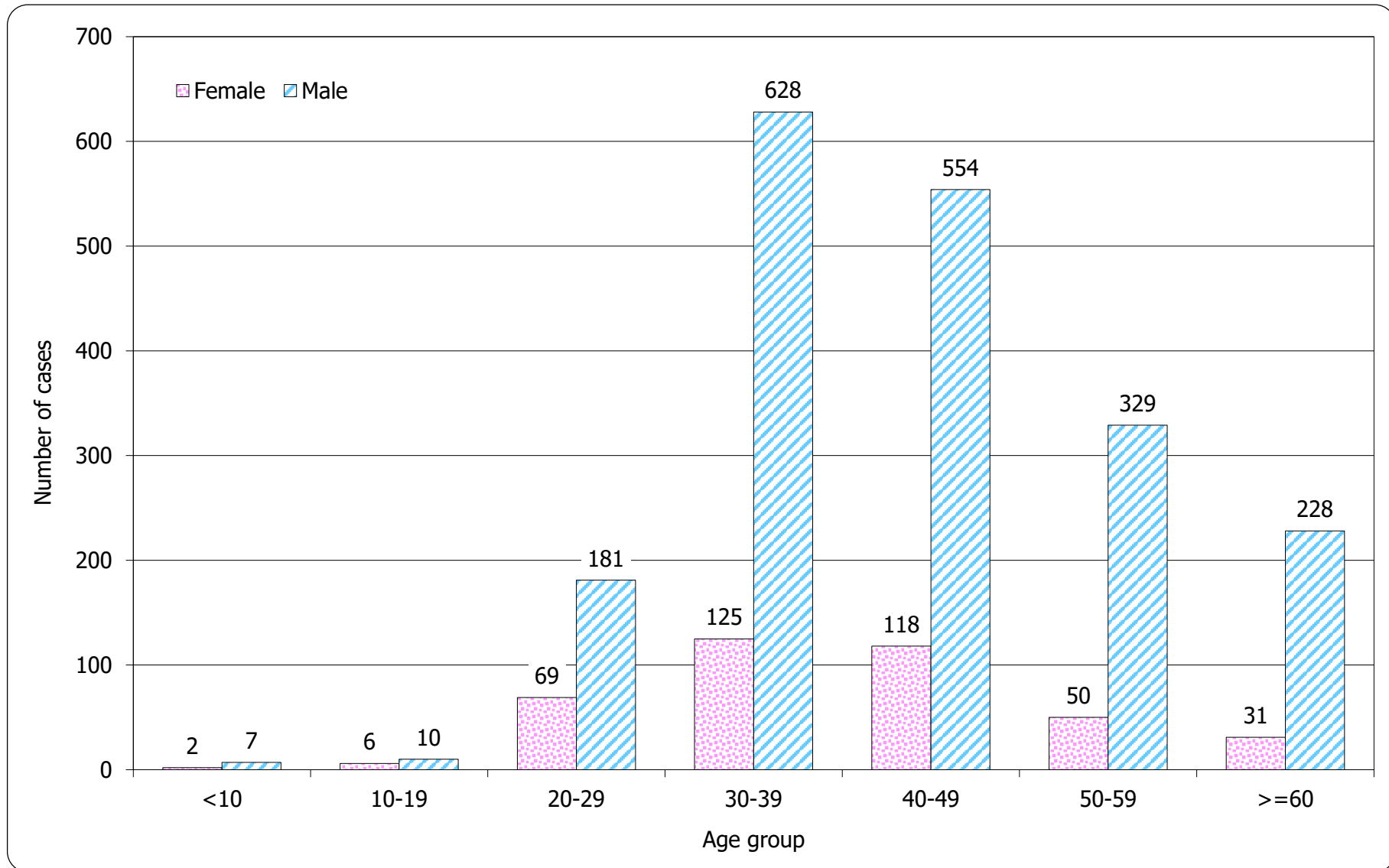


Chart 4.4 Age group & gender of total reported AIDS



5. Exposure categories of reported HIV/AIDS

Table 5.1 Exposure categories of reported HIV

	This quarter (Jan - Mar 2022)	Last quarter (Oct - Dec 2021)	Same quarter last year (Jan - Mar 2021)	Cumulative (1984 – Mar 2022)
Heterosexual	11	35	27	3,646
Homosexual	38	39	49	4,705
Bisexual	9	13	12	658
Injecting drug use	0	0	0	373
Blood / blood product infusion	0	0	0	85
Perinatal	0	0	0	35
Undetermined	27	23	13	1,815
Total	85	110	101	11,317

Chart 5.1 Exposure categories of reported HIV

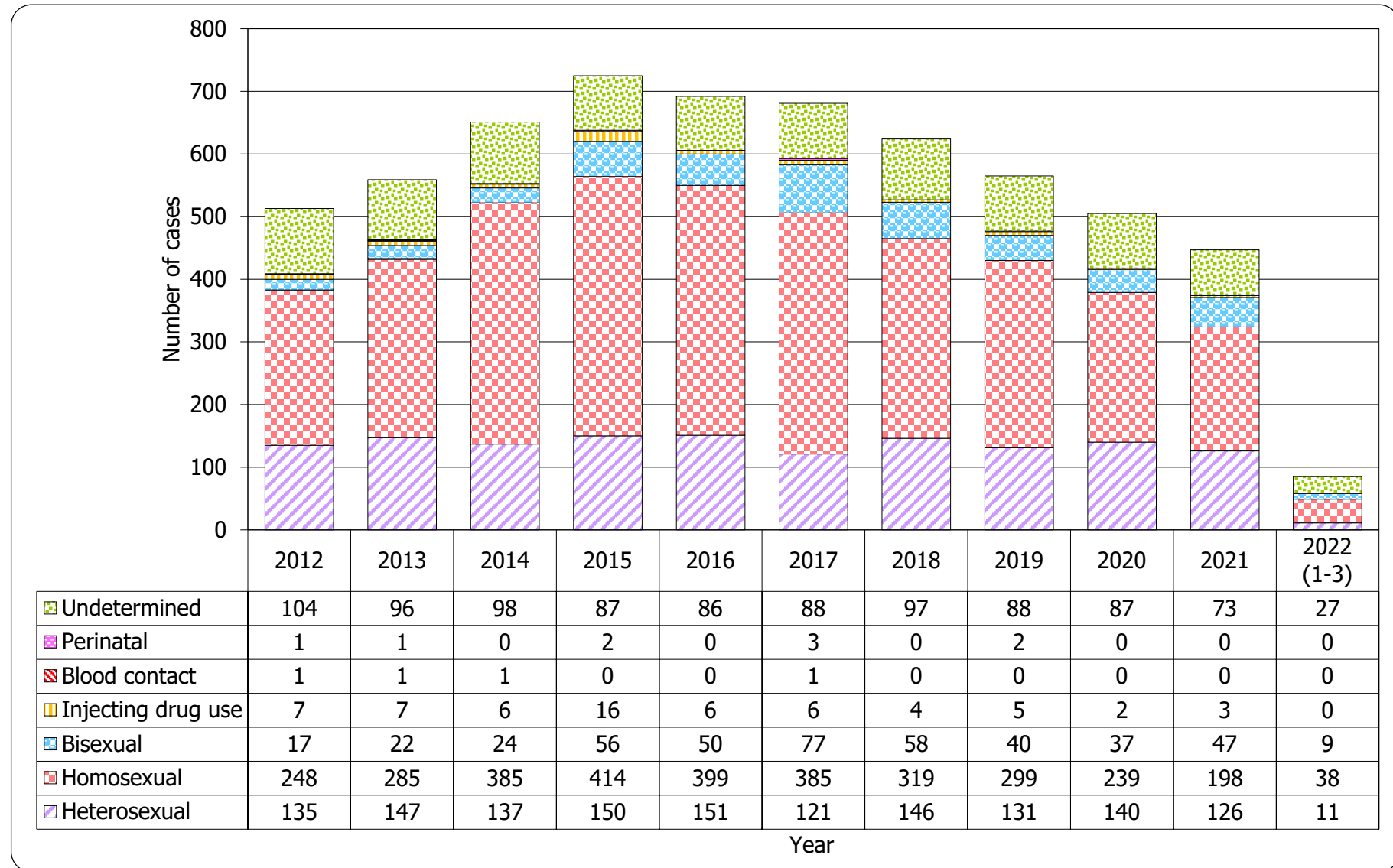
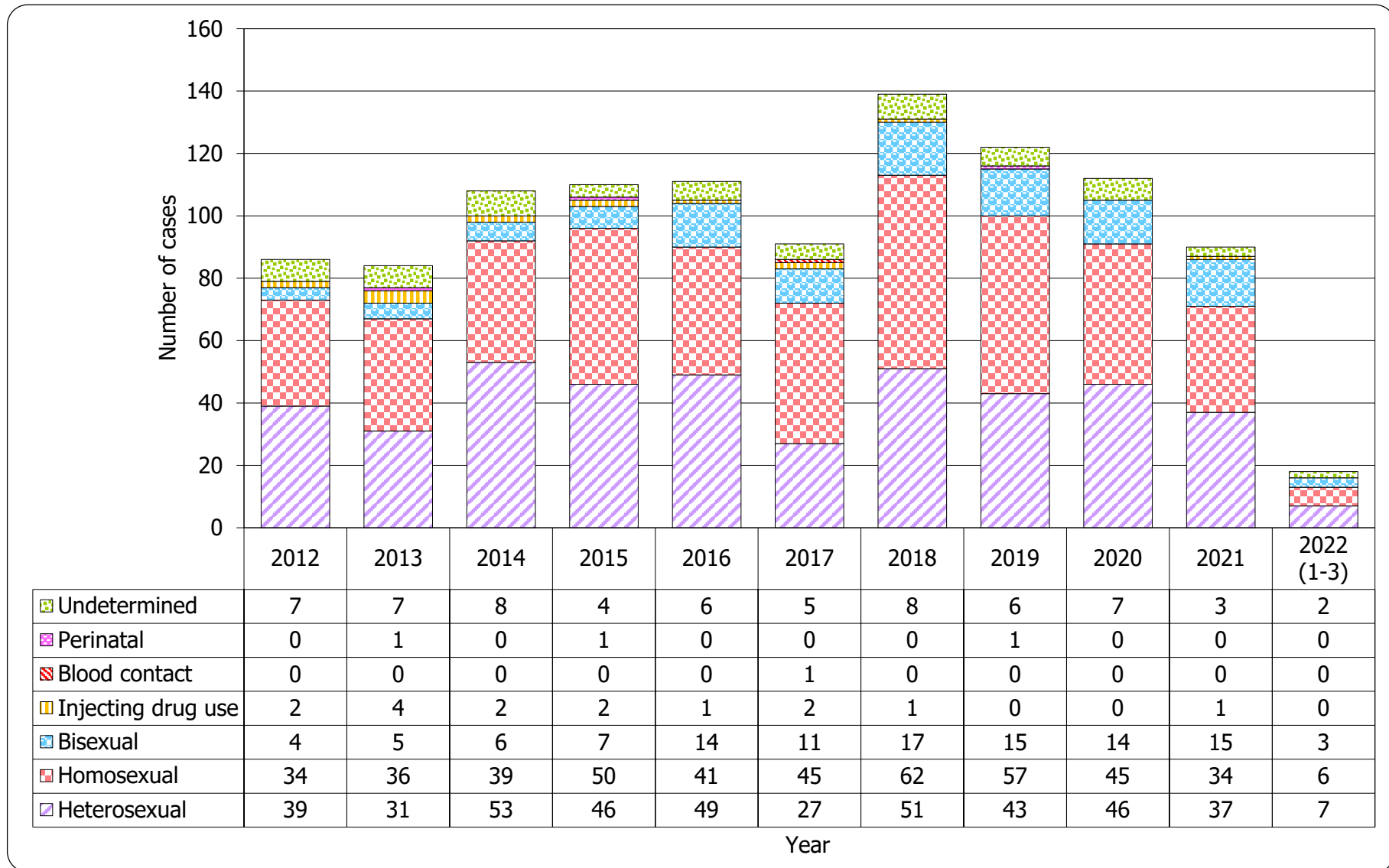


Table 5.2 Exposure categories of reported AIDS

	This quarter (Jan - Mar 2022)	Last quarter (Oct - Dec 2021)	Same quarter last year (Jan - Mar 2021)	Cumulative (1984 – Mar 2022)
Heterosexual	7	11	9	1,181
Homosexual	6	7	9	735
Bisexual	3	5	4	163
Injecting drug use	0	0	0	68
Blood / blood product infusion	0	0	0	25
Perinatal	0	0	0	11
Undetermined	2	0	2	155
Total	18	23	24	2,338

Chart 5.2 Exposure categories of reported AIDS



6. Ratio (heterosexual : homosexual / bisexual) of sexually acquired HIV infection in men

Table 6.1 Ratio of sexually acquired infection in men with reported HIV/AIDS (heterosexual : homo / bisexual) by quarter

	This quarter (Jan - Mar 2022)	Last quarter (Oct - Dec 2021)	Same quarter last year (Jan - Mar 2021)	Cumulative (1984 – Mar 2022)
HIV	0.1 : 1	0.3 : 1	0.3 : 1	0.4 : 1
AIDS	0.3 : 1	0.6 : 1	0.5 : 1	0.9 : 1

Table 6.2 Ratio of sexually acquired infection in men with reported HIV/AIDS (heterosexual : homo / bisexual) by year

	2012	2013	2014	2015	2016	2017	2018	2019	2020	2021	2022 (1-3)	1984 – Mar 2022
HIV	0.3 : 1	0.2 : 1	0.2 : 1	0.2 : 1	0.2 : 1	0.1 : 1	0.2 : 1	0.2 : 1	0.3 : 1	0.3 : 1	0.1 : 1	0.4 : 1
AIDS	0.6 : 1	0.4 : 1	0.7 : 1	0.5 : 1	0.5 : 1	0.3 : 1	0.3 : 1	0.4 : 1	0.4 : 1	0.5 : 1	0.3 : 1	0.9 : 1

7. Injecting drug users in reported HIV/AIDS

Table 7.1 Injecting drug users in reported HIV/AIDS

	This quarter (Jan - Mar 2022)	Last quarter (Oct - Dec 2021)	Same quarter last year (Jan - Mar 2021)	Cumulative (1984 – Mar 2022)
HIV (% of reported HIV)	0 0.0%	0 0.0%	0 0.0%	373 3.3%
AIDS (% of reported AIDS)	0 0.0%	0 0.0%	0 0.0%	68 2.9%

Table 7.2 Number of injecting drug user in reported HIV/AIDS by year

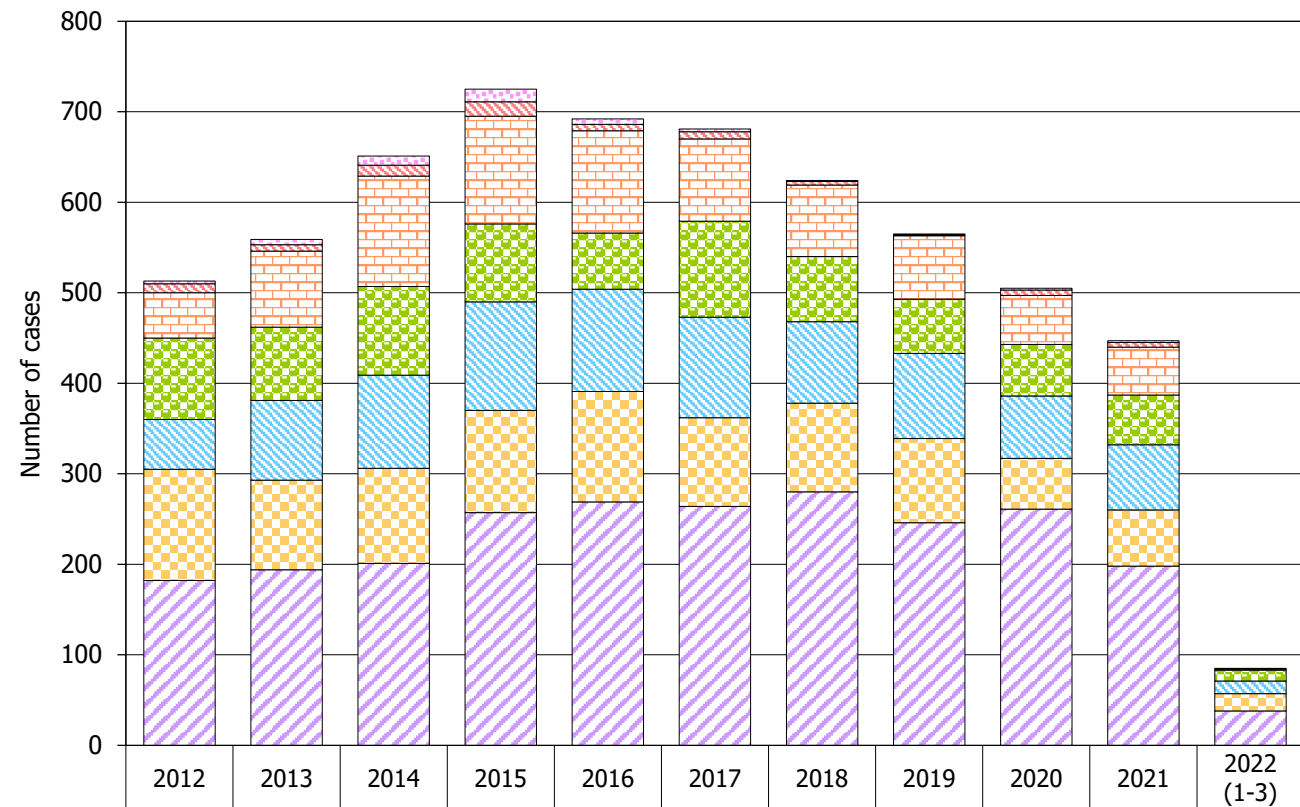
	2012	2013	2014	2015	2016	2017	2018	2019	2020	2021	2022 (1-3)	1984 – Mar 2022
HIV (% of reported HIV)	7 (1.4%)	7 (1.3%)	6 (0.9%)	16 (2.2%)	6 (0.9%)	6 (0.9%)	4 (0.6%)	5 (0.9%)	2 (0.4%)	3 (0.7%)	0 (0.0%)	373 (3.3%)
AIDS (% of reported AIDS)	2 (2.3%)	4 (4.8%)	2 (1.9%)	2 (1.8%)	1 (0.9%)	2 (2.2%)	1 (0.7%)	0 (0.0%)	0 (0.0%)	1 (1.1%)	0 (0.0%)	68 (2.9%)

8. Source of referral of reported HIV/AIDS

Table 8.1 Source of referral of reported HIV

	This quarter (Jan - Mar 2022)	Last quarter (Oct - Dec 2021)	Same quarter last year (Jan - Mar 2021)	Cumulative (1984 – Mar 2022)
Public hospitals / clinics / laboratories	38	51	43	4,680
Private hospitals / clinics / laboratories	19	18	11	2,167
Social Hygiene Clinics	14	14	23	1,635
DH AIDS Unit	12	19	10	1,429
AIDS service organisations (NGOs)	1	7	14	1,094
Hong Kong Red Cross Blood Transfusion Service	1	1	0	177
Drug rehabilitation services	0	0	0	135
Total	85	110	101	11,317

Chart 8.1 Source of referral of reported HIV



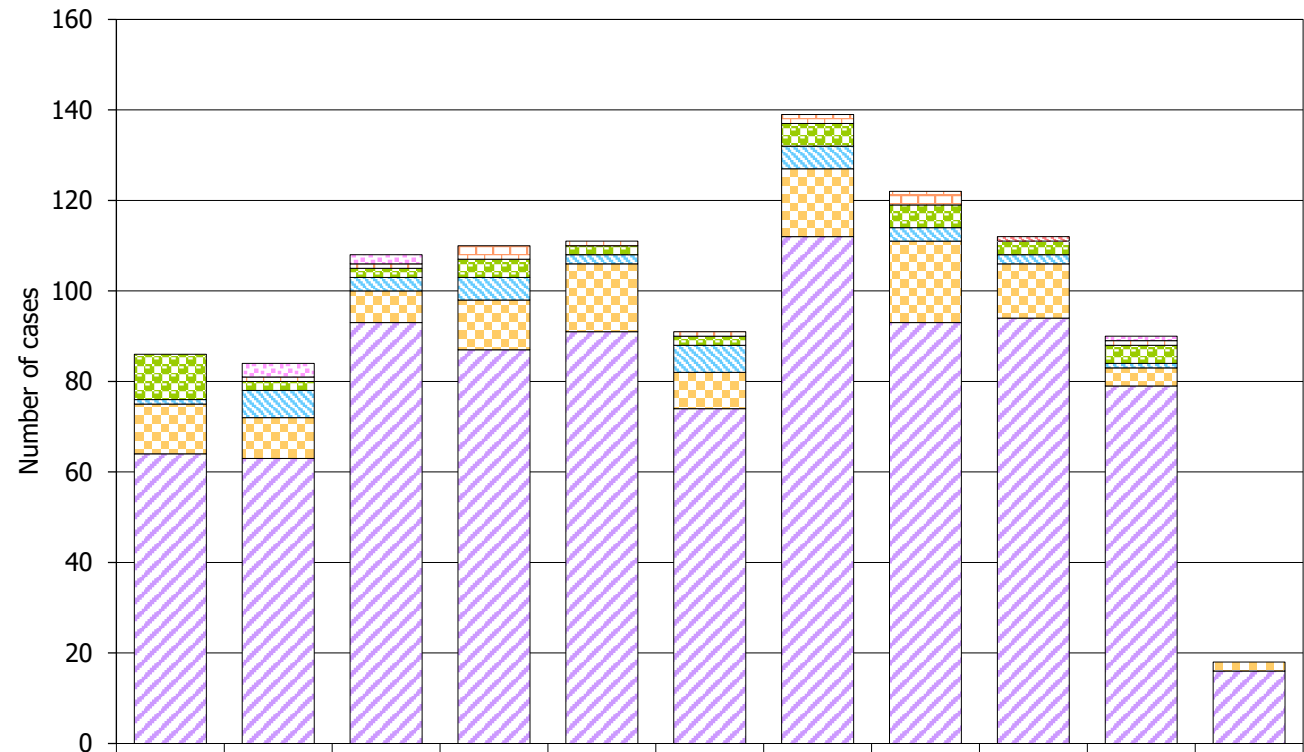
Drug rehabilitation services	3	6	10	14	6	3	1	1	2	2	0
Hong Kong Red Cross Blood Transfusion Service	10	7	12	16	7	8	4	1	6	5	1
AIDS service organisations (NGOs)	50	84	122	119	113	91	79	70	54	53	1
DH AIDS Unit	90	81	98	86	62	106	72	60	57	55	12
Social Hygiene Clinics	55	88	103	120	113	111	90	94	69	72	14
Private hospitals / clinics / laboratories	123	99	105	113	122	98	98	93	56	62	19
Public hospitals / clinics / laboratories	182	194	201	257	269	264	280	246	261	198	38

Year

Table 8.2 Source of referral of reported AIDS

	This quarter (Jan - Mar 2022)	Last quarter (Oct - Dec 2021)	Same quarter last year (Jan - Mar 2021)	Cumulative (1984 – Mar 2022)
Public hospitals / clinics / laboratories	16	18	22	1,812
Private hospitals / clinics / laboratories	2	1	1	293
Social Hygiene Clinics	0	0	0	79
DH AIDS Unit	0	2	1	118
AIDS service organisations (NGOs)	0	1	0	19
Hong Kong Red Cross Blood Transfusion Service	0	0	0	10
Drug rehabilitation services	0	1	0	7
Total	18	23	24	2,338

Chart 8.2 Source of referral of Reported AIDS



	2012	2013	2014	2015	2016	2017	2018	2019	2020	2021	2022 (1-3)
Drug rehabilitation services	0	3	2	0	0	0	0	0	0	1	0
Hong Kong Red Cross Blood Transfusion Service	0	0	0	0	0	0	0	0	1	0	0
AIDS service organisations (NGOs)	0	1	1	3	1	1	2	3	0	1	0
DH AIDS Unit	10	2	2	4	2	2	5	5	3	4	0
Social Hygiene Clinics	1	6	3	5	2	6	5	3	2	1	0
Private hospitals / clinics / laboratories	11	9	7	11	15	8	15	18	12	4	2
Public hospitals / clinics / laboratories	64	63	93	87	91	74	112	93	94	79	16

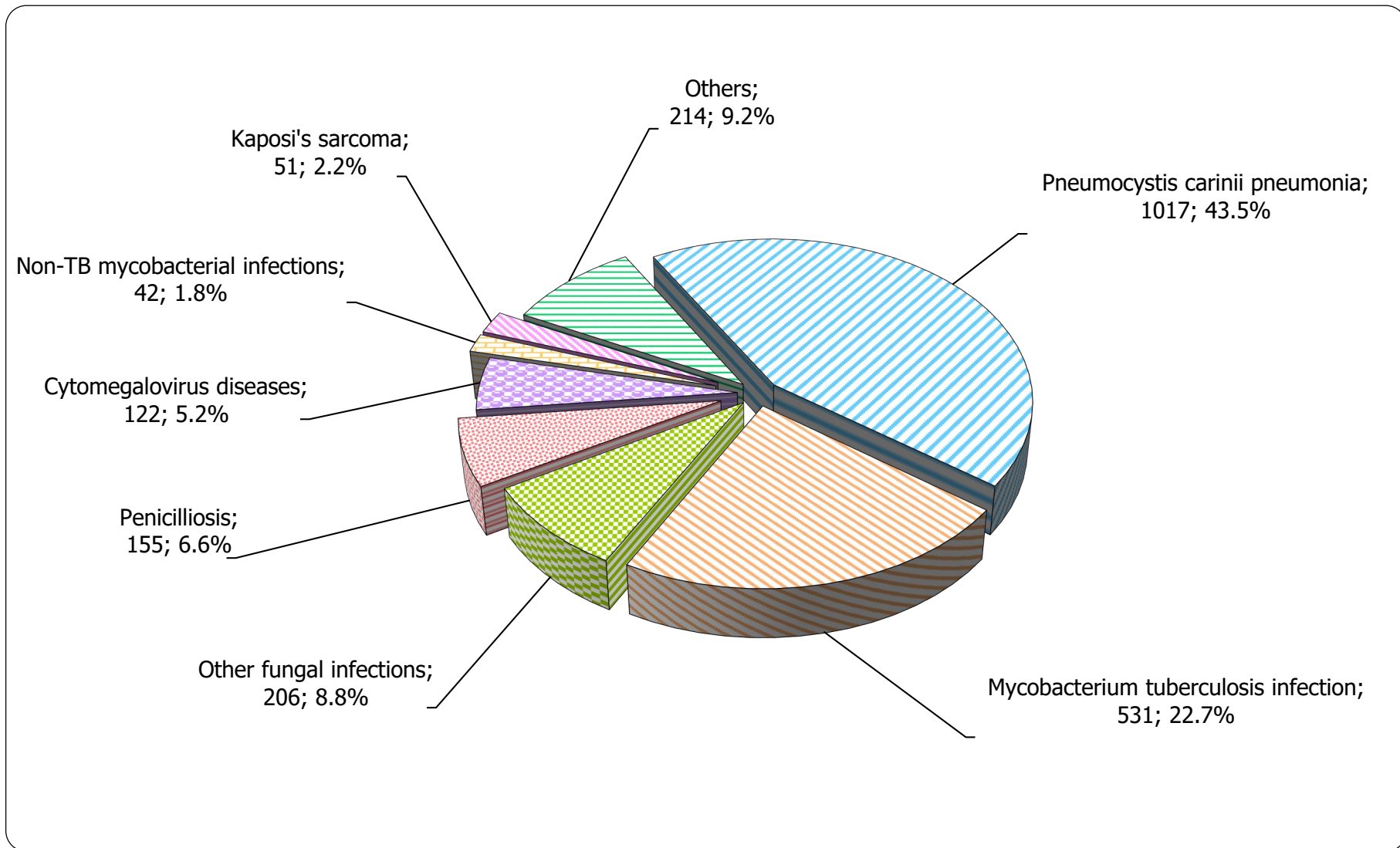
Year

9. Distribution of AIDS defining illnesses

Table 9.1 Distribution of AIDS defining illness of reported AIDS

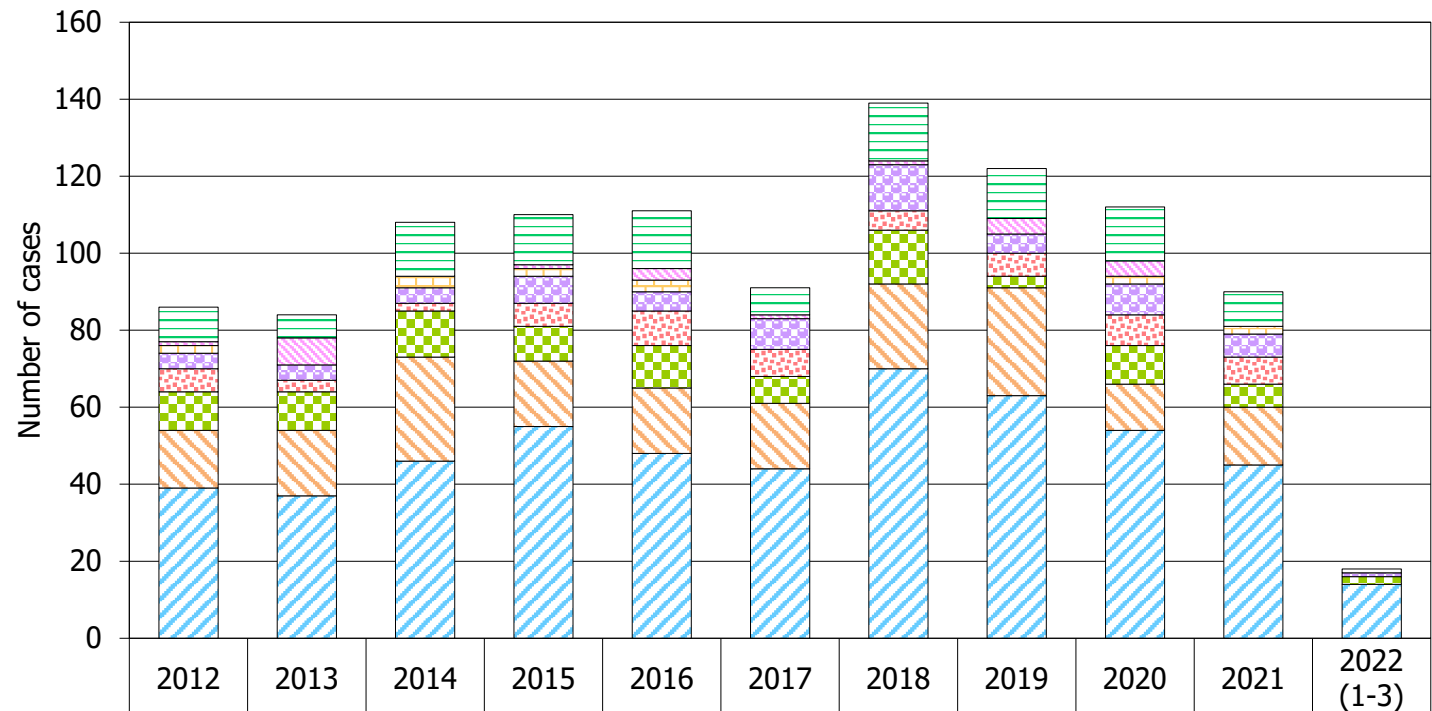
	This quarter (Jan - Mar 2022)	Last quarter (Oct - Dec 2021)	Same quarter last year (Jan - Mar 2021)	Cumulative (1984 – Mar 2022)
<i>Pneumocystis carinii pneumonia</i>	14	11	15	1,017
<i>Mycobacterium tuberculosis</i>	0	4	3	531
Other fungal infections	2	1	0	206
Penicilliosis	0	3	0	155
Cytomegalovirus diseases	1	1	2	122
Non-TB mycobacterial infections	0	0	1	42
Kaposi's sarcoma	0	0	0	51
Others	1	3	3	214
Total	18	23	24	2,338

Chart 9.1 AIDS defining illness of total reported AIDS



Format: [ADI; Number; %]

Chart 9.2 AIDS defining illness of reported AIDS by year



	2012	2013	2014	2015	2016	2017	2018	2019	2020	2021	2022 (1-3)
Others	9	6	14	13	15	7	15	13	14	9	1
Kaposi's sarcoma	1	7	0	1	3	1	1	4	4	0	0
Non-TB mycobacterial infections	2	0	3	2	3	0	0	0	2	2	0
Cytomegalovirus diseases	4	4	4	7	5	8	12	5	8	6	1
Penicilliosis	6	3	2	6	9	7	5	6	8	7	0
Other fungal infections	10	10	12	9	11	7	14	3	10	6	2
Tuberculosis	15	17	27	17	17	17	22	28	12	15	0
Pneumocystis carinii pneumonia	39	37	46	55	48	44	70	63	54	45	14

Year

10. Reported sexually transmitted infections (STIs) diagnosed in Social Hygiene Service

Table 10.1 Summary table on the reported STIs diagnosed in Social Hygiene Service

	This quarter (Jan - Mar 2022)	Last quarter (Oct - Dec 2021)	Same quarter last year (Jan - Mar 2021)	In year 2021
Syphilis				
<i>Primary</i>	13	17	9	67
<i>Secondary</i>	39	52	37	202
<i>Early latent</i>	49	72	53	263
<i>Late latent</i>	79	105	99	438
<i>Late (cardiovascular / neuro / ocular)</i>	0	1	1	4
<i>Congenital (early)</i>	0	1	0	1
<i>Congenital (late)</i>	0	0	0	0
Syphilis total	180	248	199	975

(to be cont'd)

Table 10.1 (cont'd)

	This quarter (Jan - Mar 2022)	Last quarter (Oct - Dec 2021)	Same quarter last year (Jan - Mar 2021)	In year 2021
Gonorrhoea	341	519	386	2,032
Non-gonococcal urethritis (Male)	610	813	686	3,170
Non-specific genital infection (Female)	379	538	412	1,919
Genital wart	223	336	300	1,395
Herpes genitalis	92	124	118	484
Pediculosis pubis	20	12	2	35
Trichomonas	38	60	41	199
Genital ulcer	0	0	0	0
Chancroid / Lymphogranuloma venereum	0	0	0	0
Others	143	195	70	543
Total	2,026	2,845	2,214	10,752

11. Gender distribution of reported STIs

Table 11.1 Gender distribution of selected STI reported by Social Hygiene Service

	This quarter (Jan - Mar 2022)	Last quarter (Oct - Dec 2021)	Same quarter last year (Jan - Mar 2021)	In year 2021
Primary Syphilis				
Male (M)	13	16	9	66
Female (F)	0	1	0	1
M : F	N.A.	16.0 : 1	N.A.	66.0 : 1
Gonorrhoea				
Male (M)	297	445	333	1,769
Female (F)	44	74	53	263
M : F	6.8 : 1	6.0 : 1	6.3 : 1	6.7 : 1
NGU / NSGI / CT *				
Male (M)	610	813	686	3,170
Female (F)	379	538	412	1,919
M : F	1.6 : 1	1.5 : 1	1.7 : 1	1.7 : 1

(to be cont'd)

Table 11.1 (cont'd)

	This quarter (Jan - Mar 2022)	Last quarter (Oct - Dec 2021)	Same quarter last year (Jan - Mar 2021)	In year 2021
Genital wart				
Male (M)	165	254	223	1,074
Female (F)	58	82	77	321
M : F	2.8 : 1	3.1 : 1	2.9 : 1	3.3 : 1
<i>Herpes genitalis</i>				
Male (M)	63	82	88	311
Female (F)	29	42	30	173
M : F	2.2 : 1	2.0 : 1	2.9 : 1	1.8 : 1

* NGU = Non-gonococcal urethritis

NSGI = Non-specific genital infection

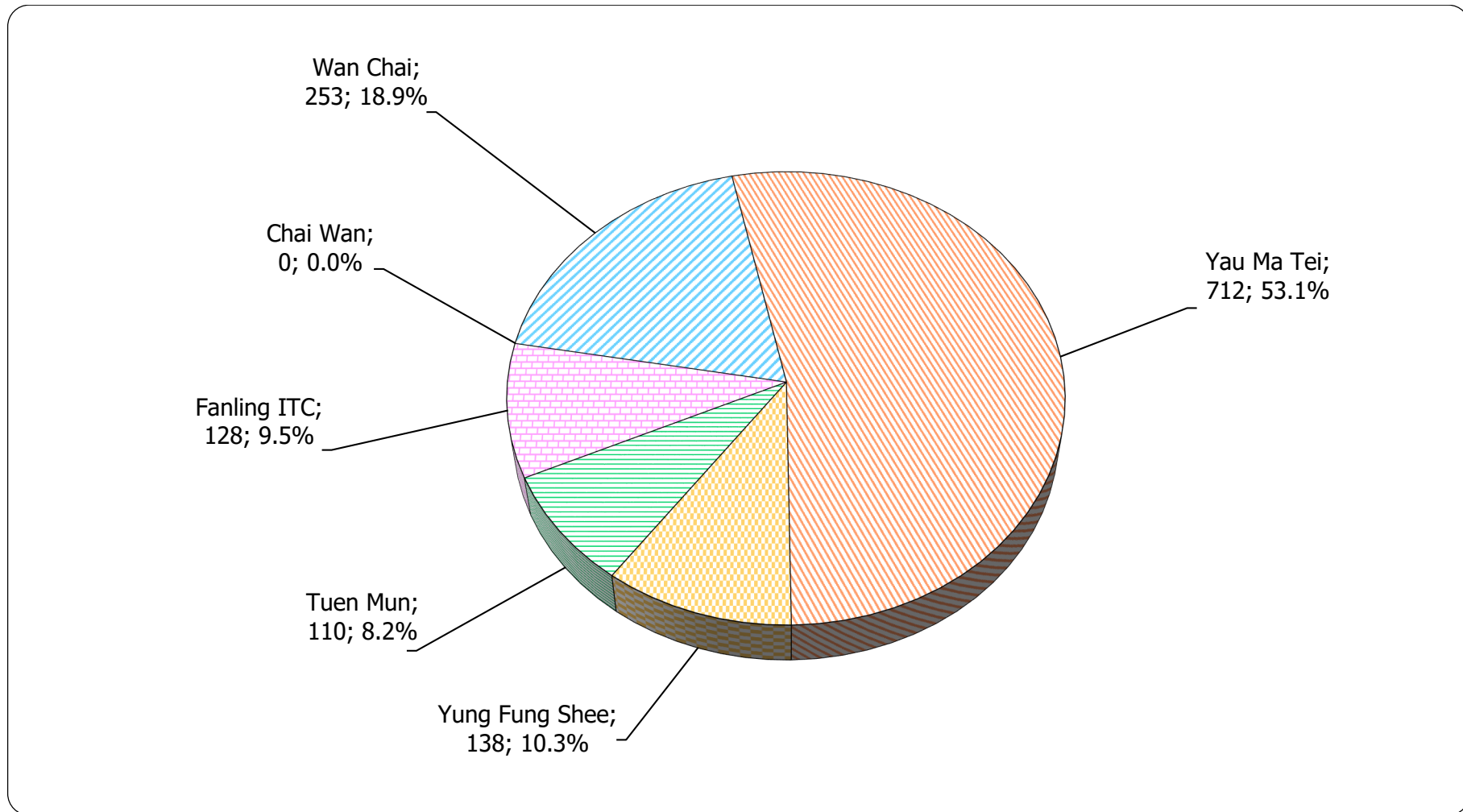
CT = Chlamydia trachomatis

Table 11.2 Gender distribution of reported STI by clinic

	This quarter (Jan - Mar 2022)		Last quarter (Oct - Dec 2021)		Same quarter last year (Jan - Mar 2021)		In year 2021	
	Male	Female	Male	Female	Male	Female	Male	Female
Chai Wan	0	0	0	0	0	0	0	0
Wan Chai	253	335	396	441	0	0	753	881
Yau Ma Tei	712	29	947	120	998	0	4,296	120
Yung Fung Shee	138	117	200	158	247	319	954	1,059
Tuen Mun	110	102	144	112	150	174	643	597
Fanling ITC	128	102	179	148	145	181	722	727
Total	1,341	685	1,866	979	1,540	674	7,368	3,384

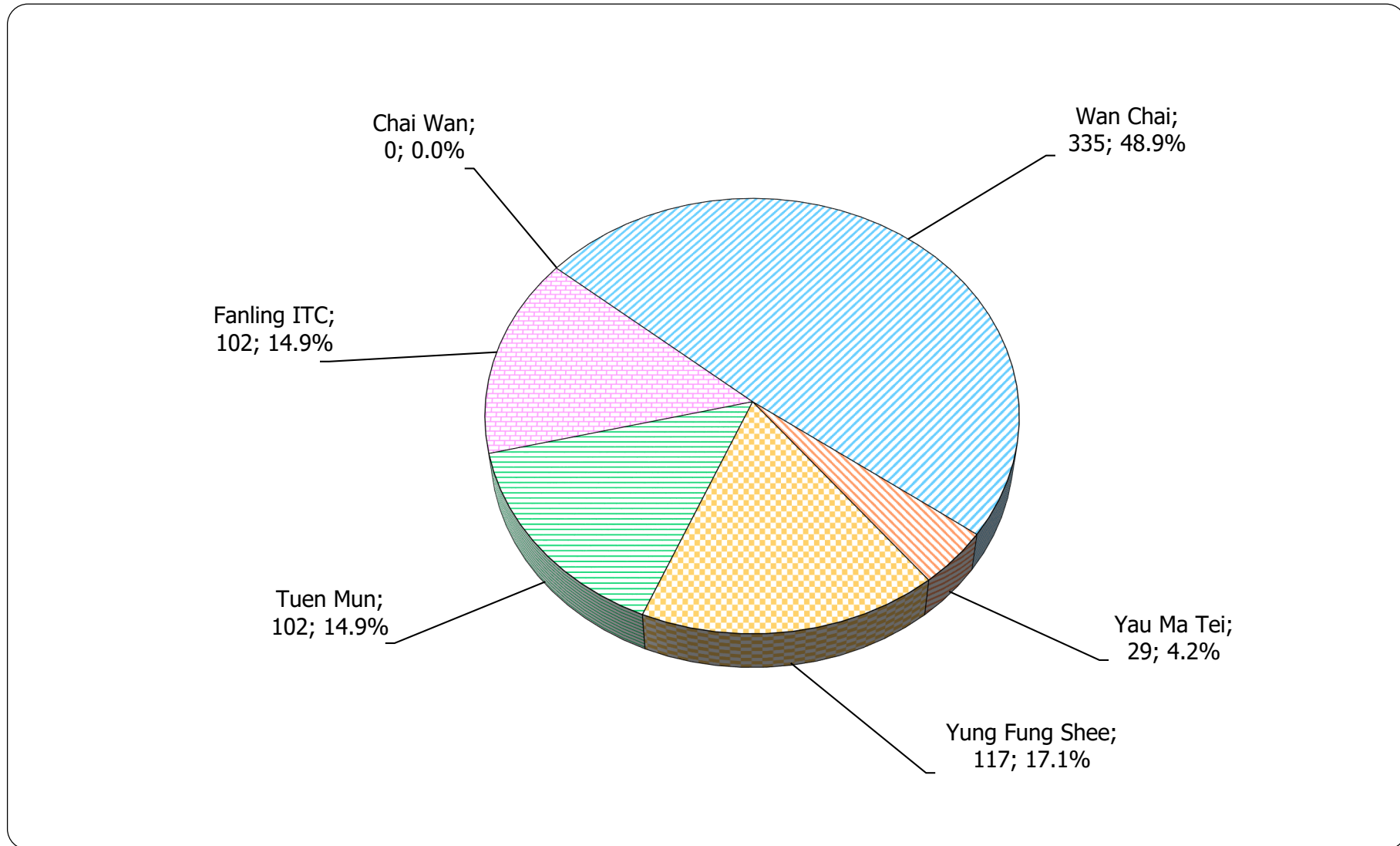
12. Clinic distribution

Chart 12.1 Number of newly report STI in Q1 2022 by clinic (male clients)



Format: [Clinic; Number; %]

Chart 12.2 Number of newly report STI in Q1 2022 by clinic (female clients)



Format: [Clinic; Number; %]