



The Hong Kong STD/AIDS update is a composite report on HIV/AIDS reporting and STI caseload statistics published three monthly. The current issue has the updated information up to September 2022.

SPP Surveillance Team:

Dr. Annie LO

Ms. Shirry WAN

Correspondence to:

Special Preventive Programme,

Centre for Health Protection, Department of Health

c/o Red Ribbon Centre, 2/F Wang Tau Hom Jockey Club Clinic,

200 Junction Road East, Kowloon, Hong Kong

Telephone: (852) 3143 7200 Facsimile: (852) 2338 0534

E-mail: aids@dh.gov.hk

List of Tables / Figures

1. NUMBER OF HIV/AIDS REPORTED	94
TABLE 1.1 SUMMARY TABLE ON THE REPORTED NUMBER OF HIV/AIDS	94
CHART 1.1 NUMBER OF HIV/AIDS REPORTED	97
2. GENDER DISTRIBUTION OF REPORTED HIV/AIDS	98
TABLE 2.1 GENDER DISTRIBUTION OF REPORTED HIV	98
CHART 2.1 GENDER DISTRIBUTION OF REPORTED HIV BY QUARTER	99
CHART 2.2 GENDER DISTRIBUTION OF REPORTED HIV BY YEAR	100
TABLE 2.2 GENDER DISTRIBUTION OF REPORTED AIDS	101
CHART 2.3 GENDER DISTRIBUTION OF REPORTED AIDS BY QUARTER	102
CHART 2.4 GENDER DISTRIBUTION OF REPORTED AIDS BY YEAR	103
3. ETHNICITY OF REPORTED HIV/AIDS	104
TABLE 3.1 DISTRIBUTION OF ETHNICITY OF REPORTED HIV	104
CHART 3.1 DISTRIBUTION OF ETHNICITY OF REPORTED HIV	105
TABLE 3.2 DISTRIBUTION OF ETHNICITY OF REPORTED AIDS	106
CHART 3.2 DISTRIBUTION OF ETHNICITY OF REPORTED AIDS	107
4. AGE DISTRIBUTION OF REPORTED HIV/AIDS	108
TABLE 4.1 AGE DISTRIBUTION OF REPORTED HIV	108
CHART 4.1 AGE DISTRIBUTION OF REPORTED HIV	109
CHART 4.2 AGE GROUP & GENDER OF TOTAL REPORTED HIV	110
TABLE 4.2 AGE DISTRIBUTION OF REPORTED AIDS	111
CHART 4.3 AGE DISTRIBUTION OF REPORTED AIDS	112
CHART 4.4 AGE GROUP & GENDER OF TOTAL REPORTED AIDS	113
5. EXPOSURE CATEGORIES OF REPORTED HIV/AIDS	114
TABLE 5.1 EXPOSURE CATEGORIES OF REPORTED HIV	114
CHART 5.1 EXPOSURE CATEGORIES OF REPORTED HIV	115
TABLE 5.2 EXPOSURE CATEGORIES OF REPORTED AIDS	116
CHART 5.2 EXPOSURE CATEGORIES OF REPORTED AIDS	117

6. RATIO (HETEROSEXUAL : HOMOSEXUAL / BISEXUAL) OF SEXUALLY ACQUIRED HIV INFECTION IN MEN	118
TABLE 6.1 RATIO OF SEXUALLY ACQUIRED INFECTION IN MEN WITH REPORTED HIV/AIDS (HETEROSEXUAL : HOMO / BISEXUAL) BY QUARTER	118
TABLE 6.2 RATIO OF SEXUALLY ACQUIRED INFECTION IN MEN WITH REPORTED HIV/AIDS (HETEROSEXUAL : HOMO / BISEXUAL) BY YEAR	119
7. INJECTING DRUG USERS IN REPORTED HIV/AIDS	120
TABLE 7.1 INJECTING DRUG USERS IN REPORTED HIV/AIDS	120
TABLE 7.2 NUMBER OF INJECTING DRUG USER IN REPORTED HIV/AIDS BY YEAR	121
8. SOURCE OF REFERRAL OF REPORTED HIV/AIDS	122
TABLE 8.1 SOURCE OF REFERRAL OF REPORTED HIV	122
CHART 8.1 SOURCE OF REFERRAL OF REPORTED HIV	123
TABLE 8.2 SOURCE OF REFERRAL OF REPORTED AIDS	124
CHART 8.2 SOURCE OF REFERRAL OF REPORTED AIDS	125
9. DISTRIBUTION OF AIDS DEFINING ILLNESSES	126
TABLE 9.1 DISTRIBUTION OF AIDS DEFINING ILLNESS OF REPORTED AIDS	126
CHART 9.1 AIDS DEFINING ILLNESS OF TOTAL REPORTED AIDS	127
CHART 9.2 AIDS DEFINING ILLNESS OF REPORTED AIDS BY YEAR	128
10. REPORTED SEXUALLY TRANSMITTED INFECTIONS (STIS) DIAGNOSED IN SOCIAL HYGIENE SERVICE	129
TABLE 10.1 SUMMARY TABLE ON THE REPORTED STIS DIAGNOSED IN SOCIAL HYGIENE SERVICE	129
11. GENDER DISTRIBUTION OF REPORTED STIS	131
TABLE 11.1 GENDER DISTRIBUTION OF SELECTED STI REPORTED BY SOCIAL HYGIENE SERVICE	131
TABLE 11.2 GENDER DISTRIBUTION OF REPORTED STI BY CLINIC	133
12. CLINIC DISTRIBUTION	134
CHART 12.1 NUMBER OF NEWLY REPORT STI IN Q3 2022 BY CLINIC (MALE CLIENTS)	134
CHART 12.2 NUMBER OF NEWLY REPORT STI IN Q3 2022 BY CLINIC (FEMALE CLIENTS)	135

1. Number of HIV/AIDS reported

Table 1.1 Summary table on the reported number of HIV/AIDS

	This quarter (Jul - Sep 2022)		Last quarter (Apr - Jun 2022)		Same quarter last year (Jul - Sep 2021)		Cumulative (1984 – Sep 2022)	
	HIV	AIDS	HIV	AIDS	HIV	AIDS	HIV	AIDS
Sex								
Male	80	9	103	18	85	15	9,456	1,964
Female	17	3	22	5	20	2	2,083	409
Ethnicity / race								
Chinese	57	9	84	17	69	13	8,027	1,830
Non-Chinese	14	3	19	6	27	4	3,131	543
<i>Asian</i>	10	3	15	5	17	4	1,622	385
<i>White</i>	2	0	3	1	7	0	656	104
<i>Black</i>	2	0	1	0	2	0	269	45
<i>Others</i>	0	0	0	0	1	0	584	9
Unknown	26	0	22	0	9	0	381	0

(to be cont'd)

Table 1.1 (cont'd)

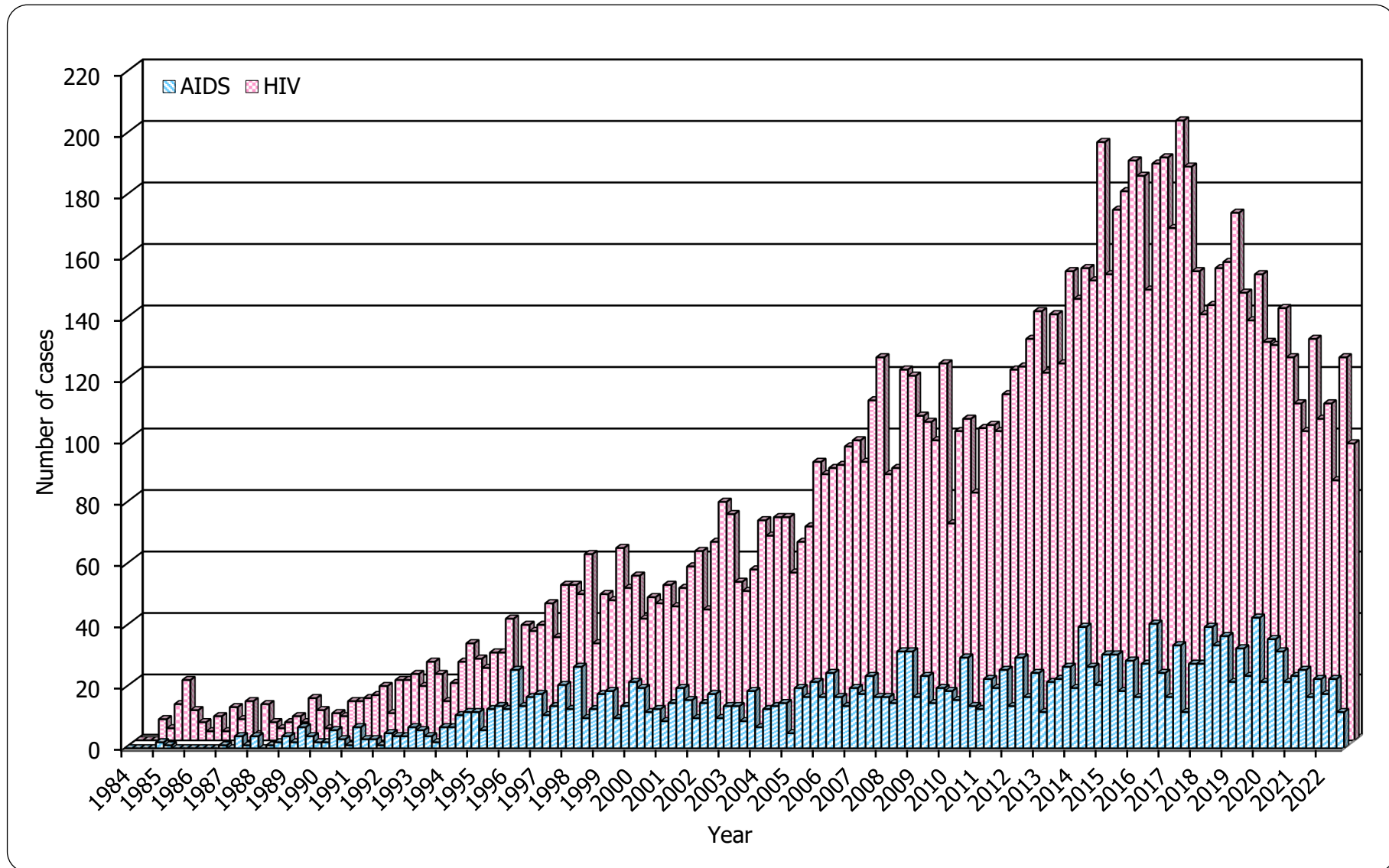
	This quarter (Jul - Sep 2022)		Last quarter (Apr - Jun 2022)		Same quarter last year (Jul - Sep 2021)		Cumulative (1984 – Sep 2022)	
	HIV	AIDS	HIV	AIDS	HIV	AIDS	HIV	AIDS
Age at diagnosis								
Adult	97	12	125	23	105	17	11,484	2,359
Child (age 13 or less)	0	0	0	0	0	0	55	14
Exposure category								
Heterosexual	26	7	30	10	31	6	3,709	1,198
Homosexual	35	4	57	9	46	7	4,805	748
Bisexual	6	0	11	1	9	3	677	164
Injecting drug use	1	0	0	0	0	0	374	68
Blood / blood product infusion	0	0	1	1	0	0	86	26
Perinatal	0	0	0	0	0	0	35	11
Undetermined	29	1	26	2	19	1	1,853	158

(to be cont'd)

Table 1.1 (cont'd)

	This quarter (Jul - Sep 2022)		Last quarter (Apr - Jun 2022)		Same quarter last year (Jul - Sep 2021)		Cumulative (1984 – Sep 2022)	
	HIV	AIDS	HIV	AIDS	HIV	AIDS	HIV	AIDS
Source of referral								
Public hospitals / clinics / laboratories	39	8	54	15	47	15	4,770	1,835
Private hospitals / clinics / laboratories	13	1	17	6	11	1	2,197	300
Social Hygiene Clinics	18	2	29	0	16	0	1,685	81
DH AIDS Unit	14	1	14	1	14	1	1,457	120
AIDS service organisations (NGOs)	11	0	10	1	15	0	1,115	20
Hong Kong Red Cross Blood Transfusion Service	1	0	1	0	1	0	179	10
Drug rehabilitation services	1	0	0	0	1	0	136	7
Total	97	12	125	23	105	17	11,539	2,373

Chart 1.1 Number of HIV/AIDS reported



2. Gender distribution of reported HIV/AIDS

Table 2.1 Gender distribution of reported HIV

	This quarter (Jul - Sep 2022)	Last quarter (Apr - Jun 2022)	Same quarter last year (Jul - Sep 2021)	Cumulative (1984 – Sep 2022)
Male	80	103	85	9,456
Female	17	22	20	2,083
Total	97	125	105	11,539

Chart 2.1 Gender distribution of reported HIV by quarter

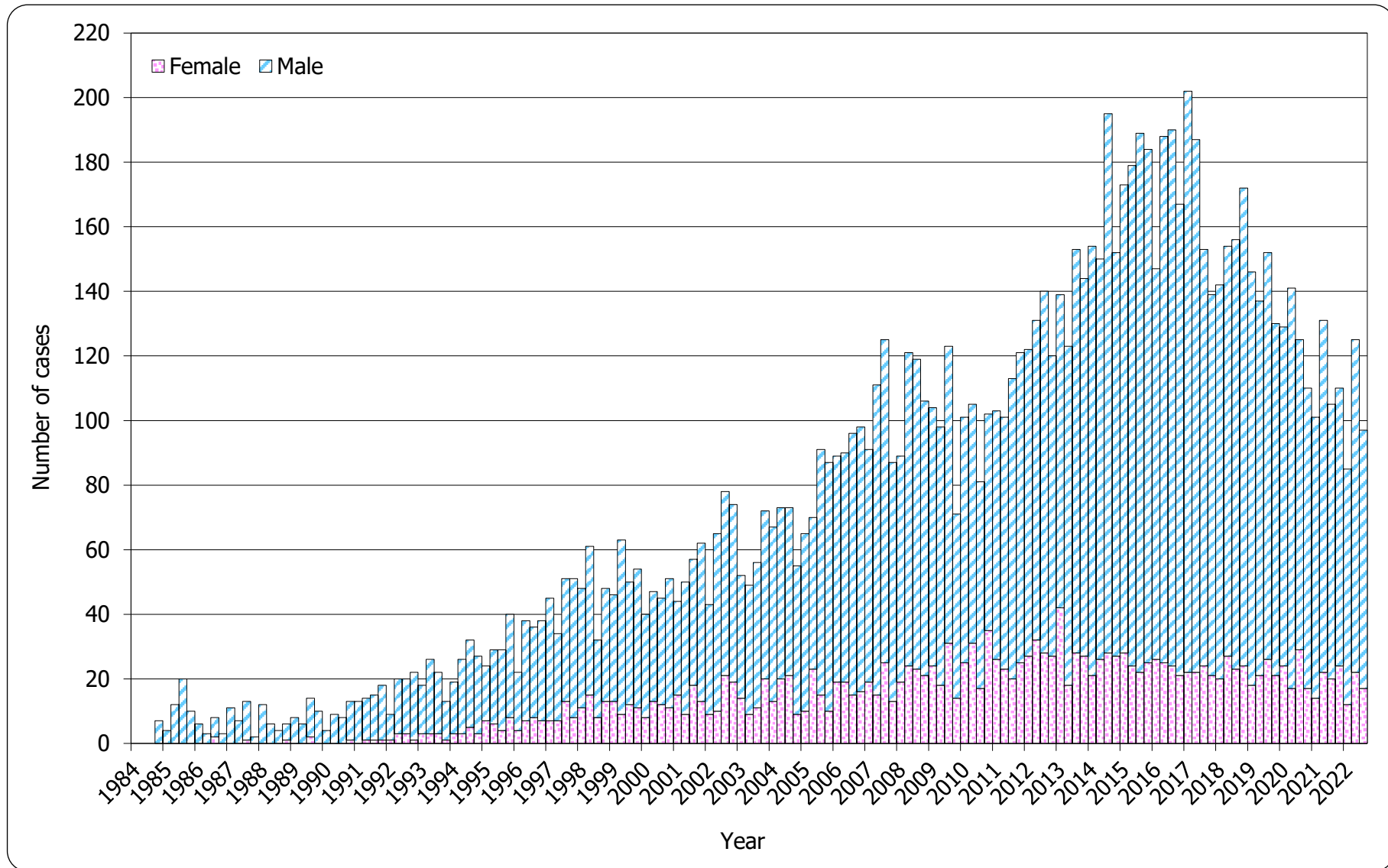


Chart 2.2 Gender distribution of reported HIV by year

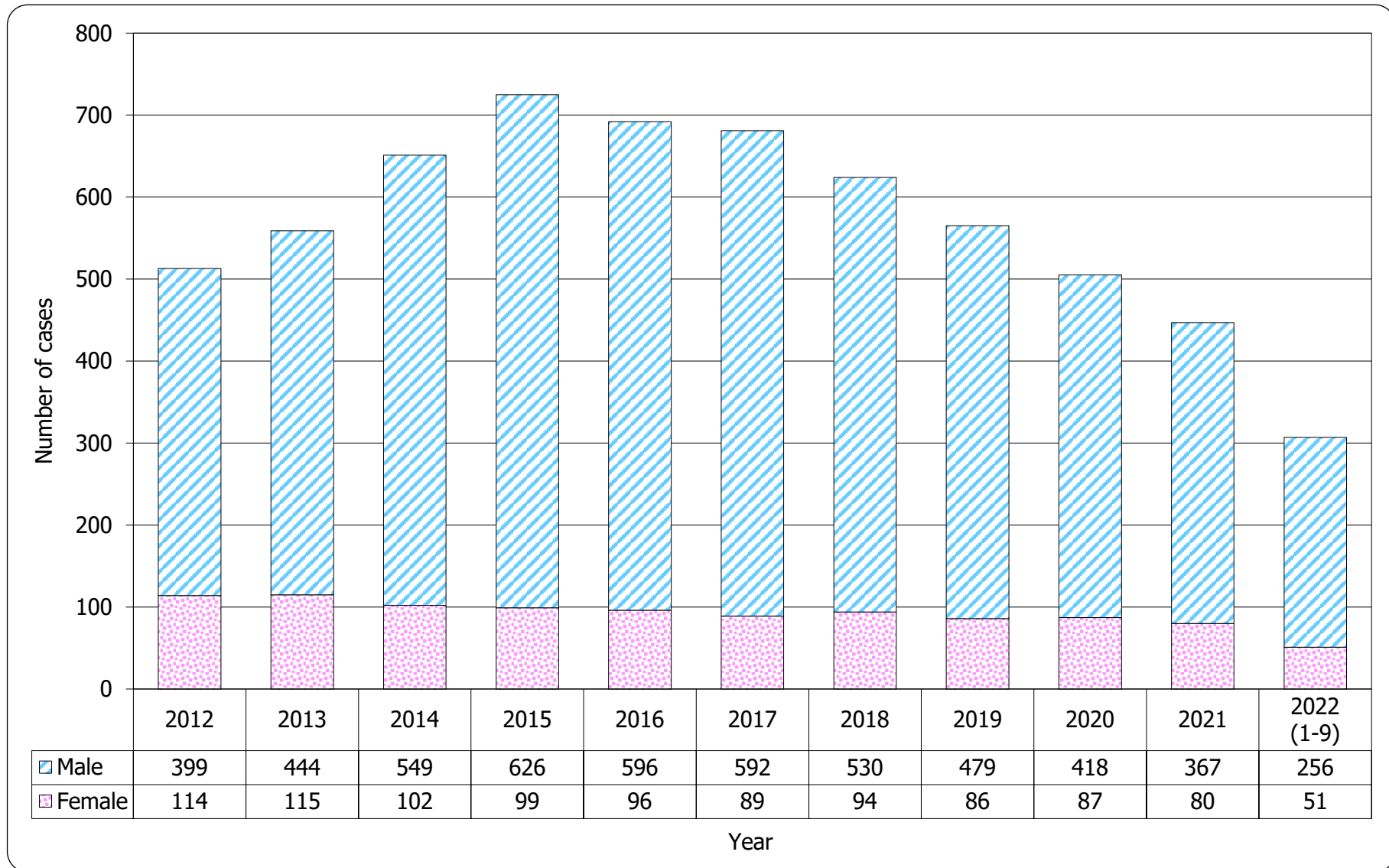


Table 2.2 Gender distribution of reported AIDS

	This quarter (Jul - Sep 2022)	Last quarter (Apr - Jun 2022)	Same quarter last year (Jul - Sep 2021)	Cumulative (1984 – Sep 2022)
Male	9	18	15	1,964
Female	3	5	2	409
Total	12	23	17	2,373

Chart 2.3 Gender distribution of reported AIDS by quarter

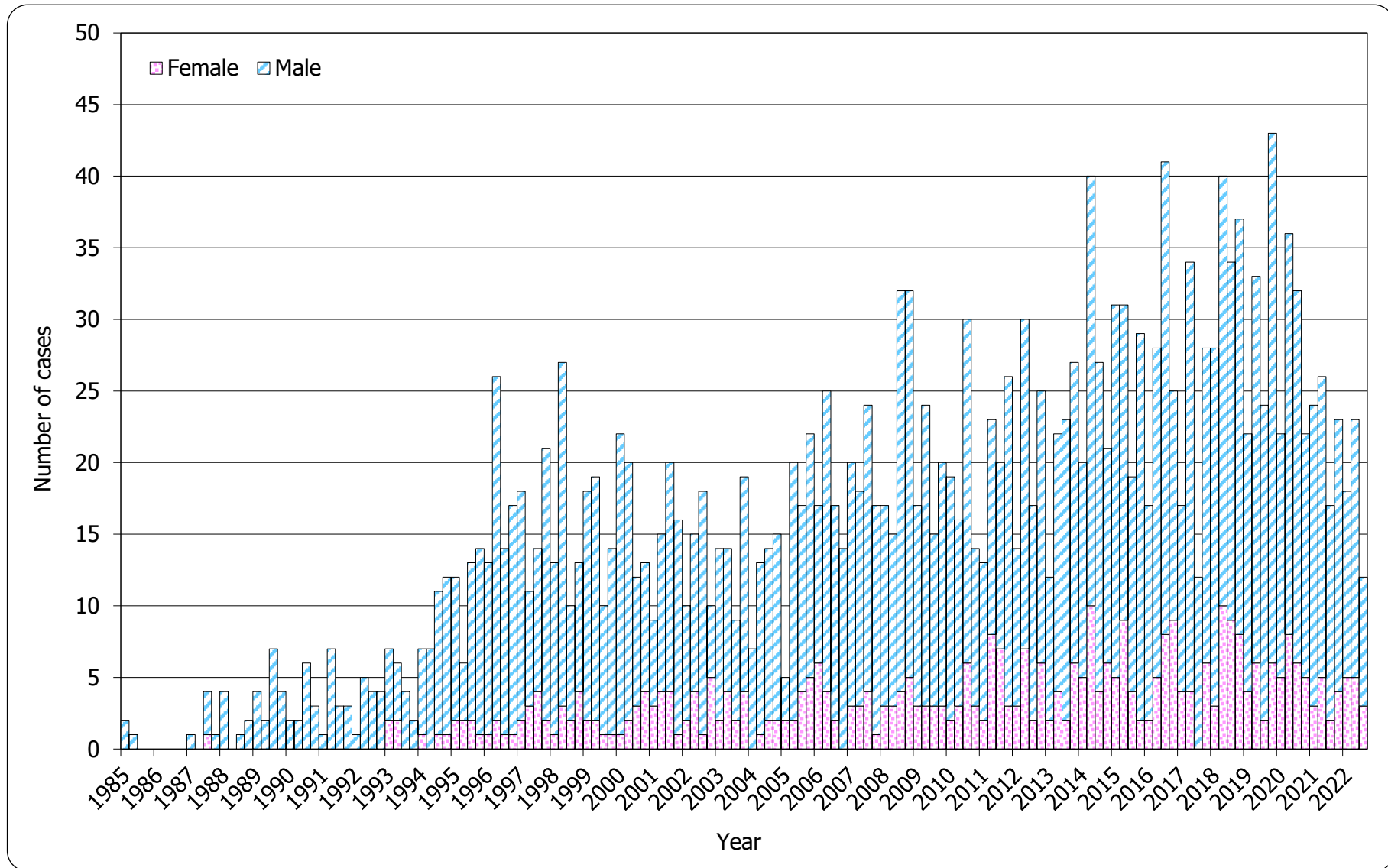
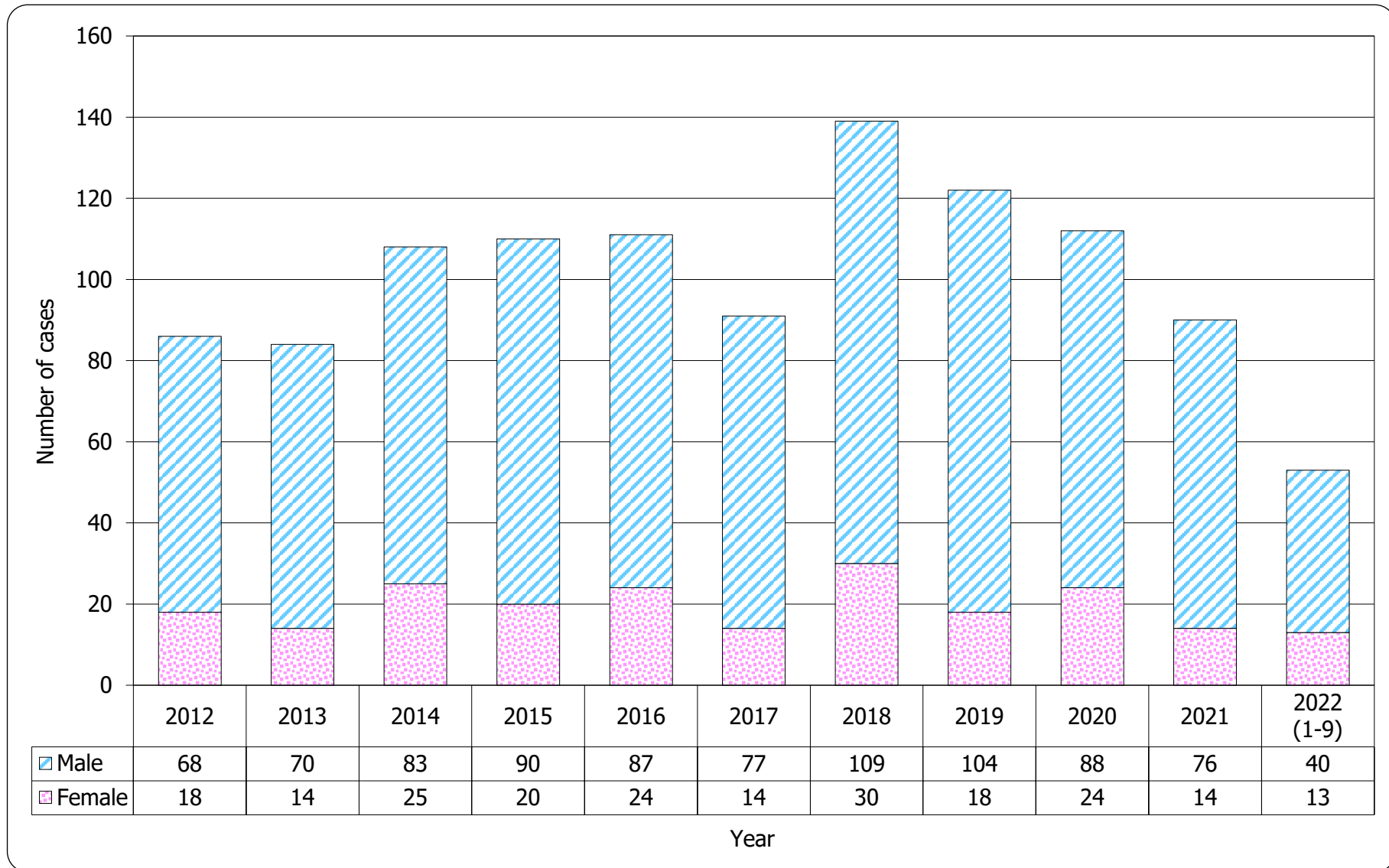


Chart 2.4 Gender distribution of reported AIDS by year



3. Ethnicity of reported HIV/AIDS

Table 3.1 Distribution of ethnicity of reported HIV

	This quarter (Jul - Sep 2022)	Last quarter (Apr - Jun 2022)	Same quarter last year (Jul - Sep 2021)	Cumulative (1984 – Sep 2022)
Chinese	57	84	69	8,027
Non-Chinese	14	19	27	3,131
<i>Asian</i>	10	15	17	1,622
<i>White</i>	2	3	7	656
<i>Black</i>	2	1	2	269
<i>Others</i>	0	0	1	584
Unknown	26	22	9	381
Total	97	125	105	11,539

Chart 3.1 Distribution of ethnicity of reported HIV

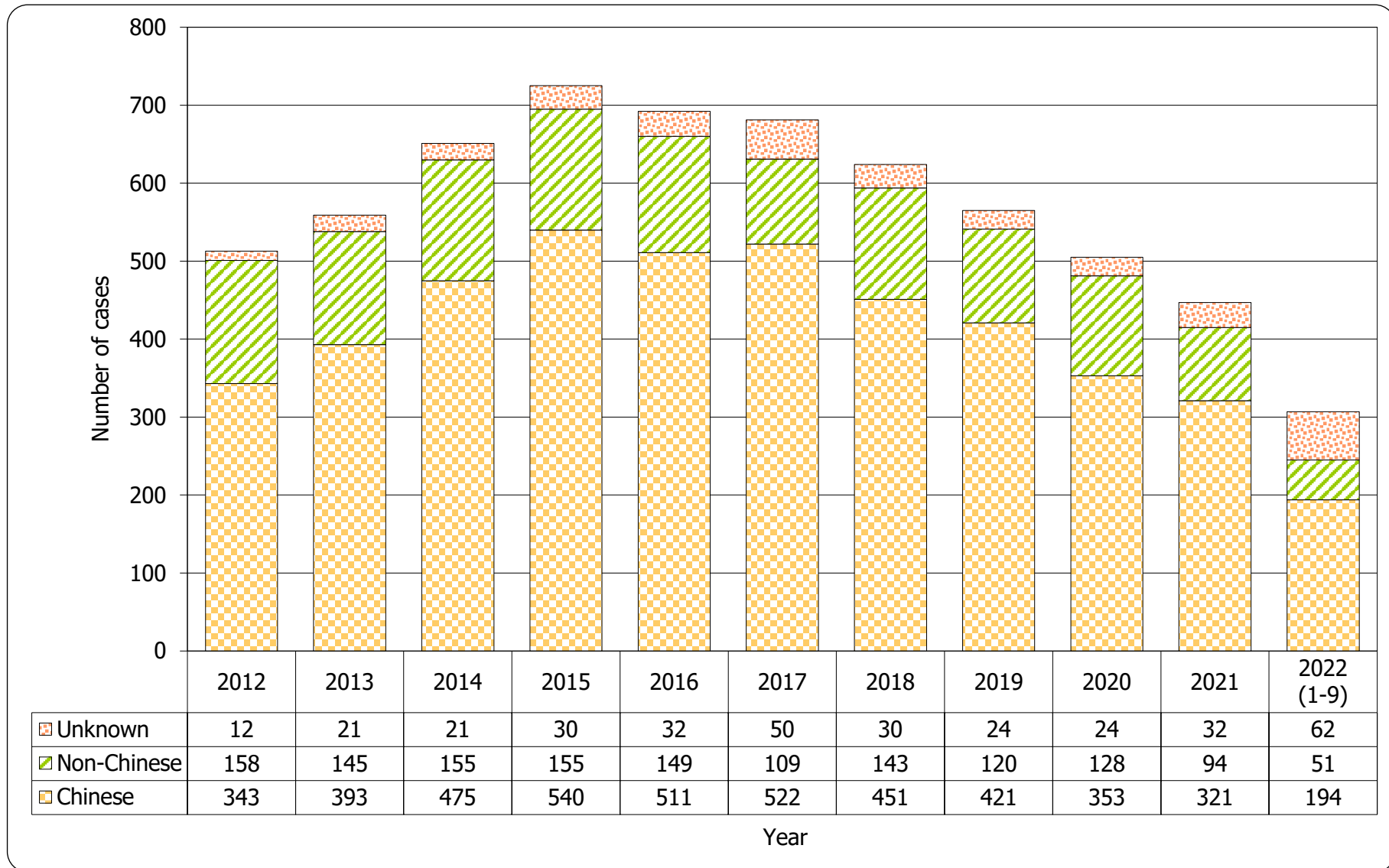
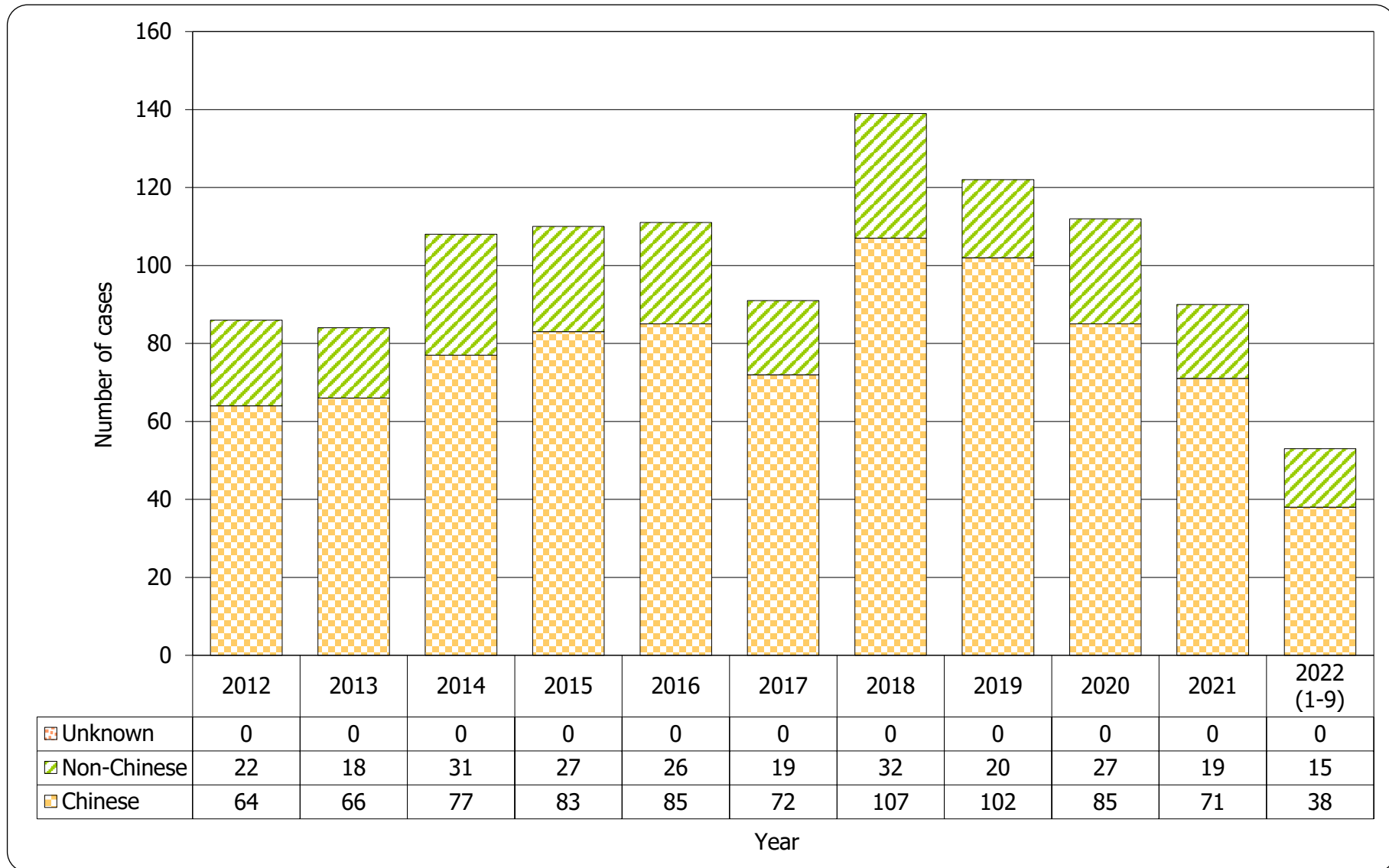


Table 3.2 Distribution of ethnicity of reported AIDS

	This quarter (Jul - Sep 2022)	Last quarter (Apr - Jun 2022)	Same quarter last year (Jul - Sep 2021)	Cumulative (1984 – Sep 2022)
Chinese	9	17	13	1,830
Non-Chinese	3	6	4	543
<i>Asian</i>	3	5	4	385
<i>White</i>	0	1	0	104
<i>Black</i>	0	0	0	45
<i>Others</i>	0	0	0	9
Unknown	0	0	0	0
Total	12	23	17	2,373

Chart 3.2 Distribution of ethnicity of reported AIDS



4. Age distribution of reported HIV/AIDS

Table 4.1 Age distribution of reported HIV

	This quarter (Jul - Sep 2022)	Last quarter (Apr - Jun 2022)	Same quarter last year (Jul - Sep 2021)	Cumulative (1984 – Sep 2022)
Adult	97	125	105	11,484
Child (age 13 or less)	0	0	0	55
Total	97	125	105	11,539

Chart 4.1 Age distribution of reported HIV

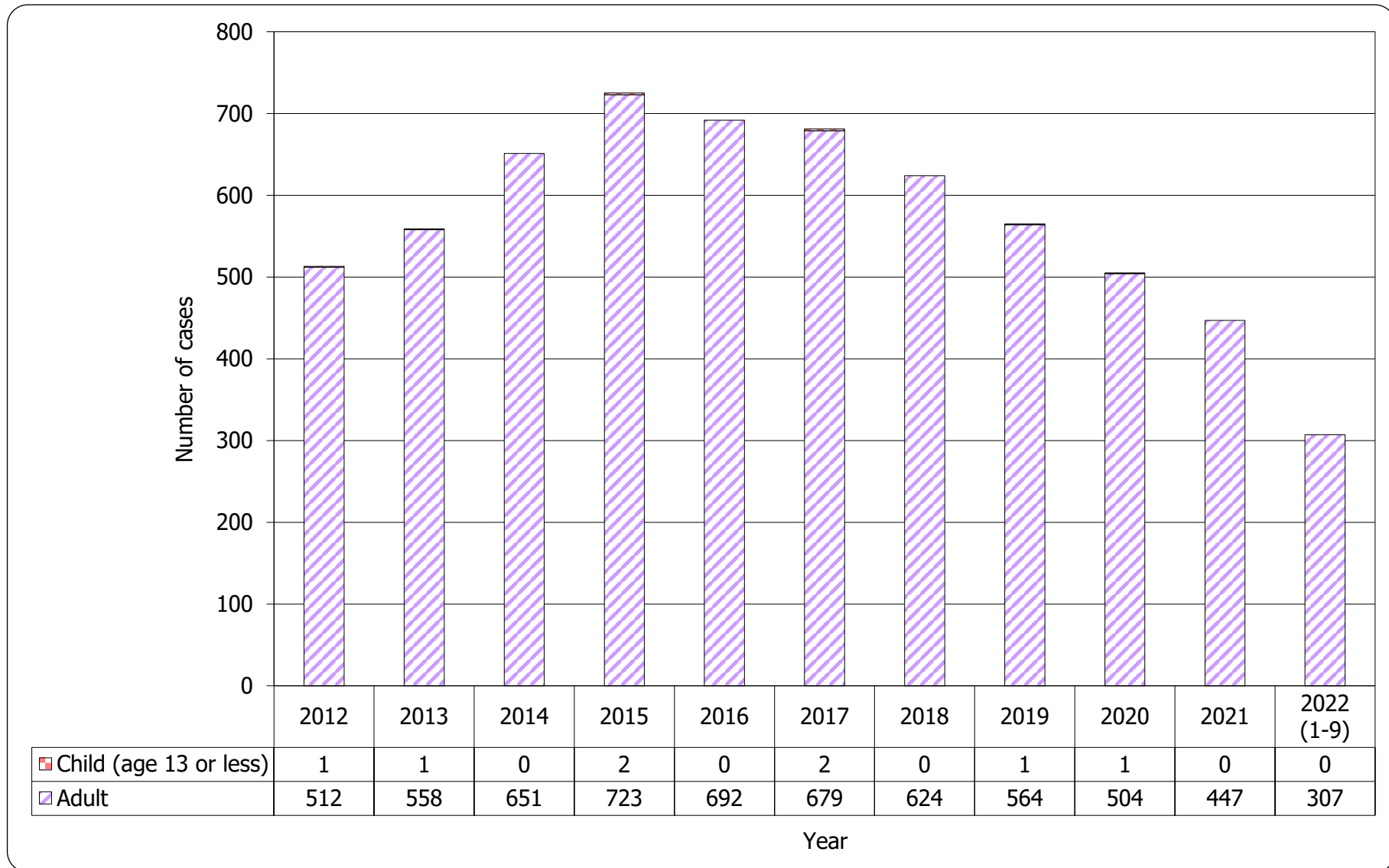


Chart 4.2 Age group & gender of total reported HIV

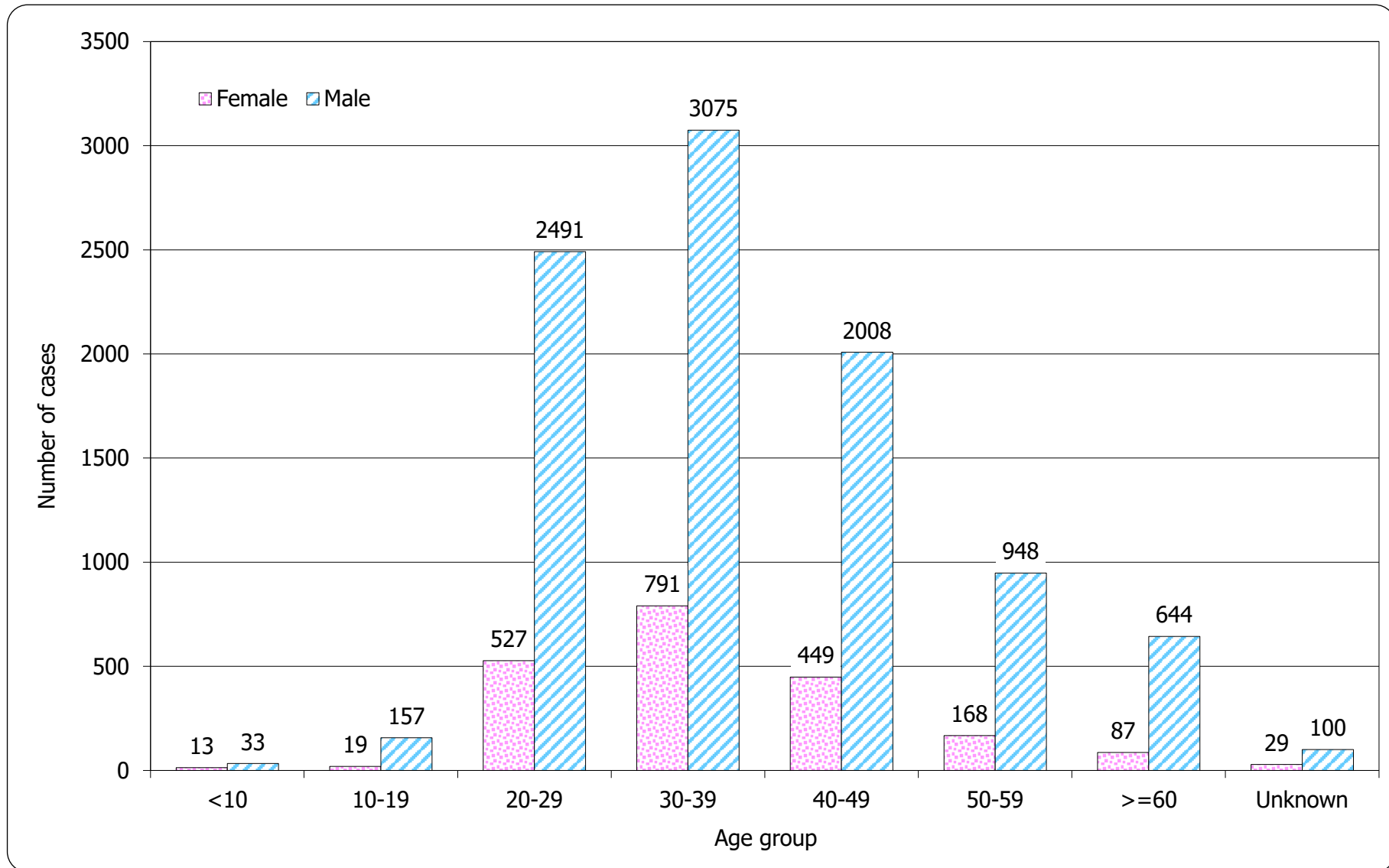


Table 4.2 Age distribution of reported AIDS

	This quarter (Jul - Sep 2022)	Last quarter (Apr - Jun 2022)	Same quarter last year (Jul - Sep 2021)	Cumulative (1984 – Sep 2022)
Adult	12	23	17	2,359
Child (age 13 or less)	0	0	0	14
Total	12	23	17	2,373

Chart 4.3 Age distribution of reported AIDS

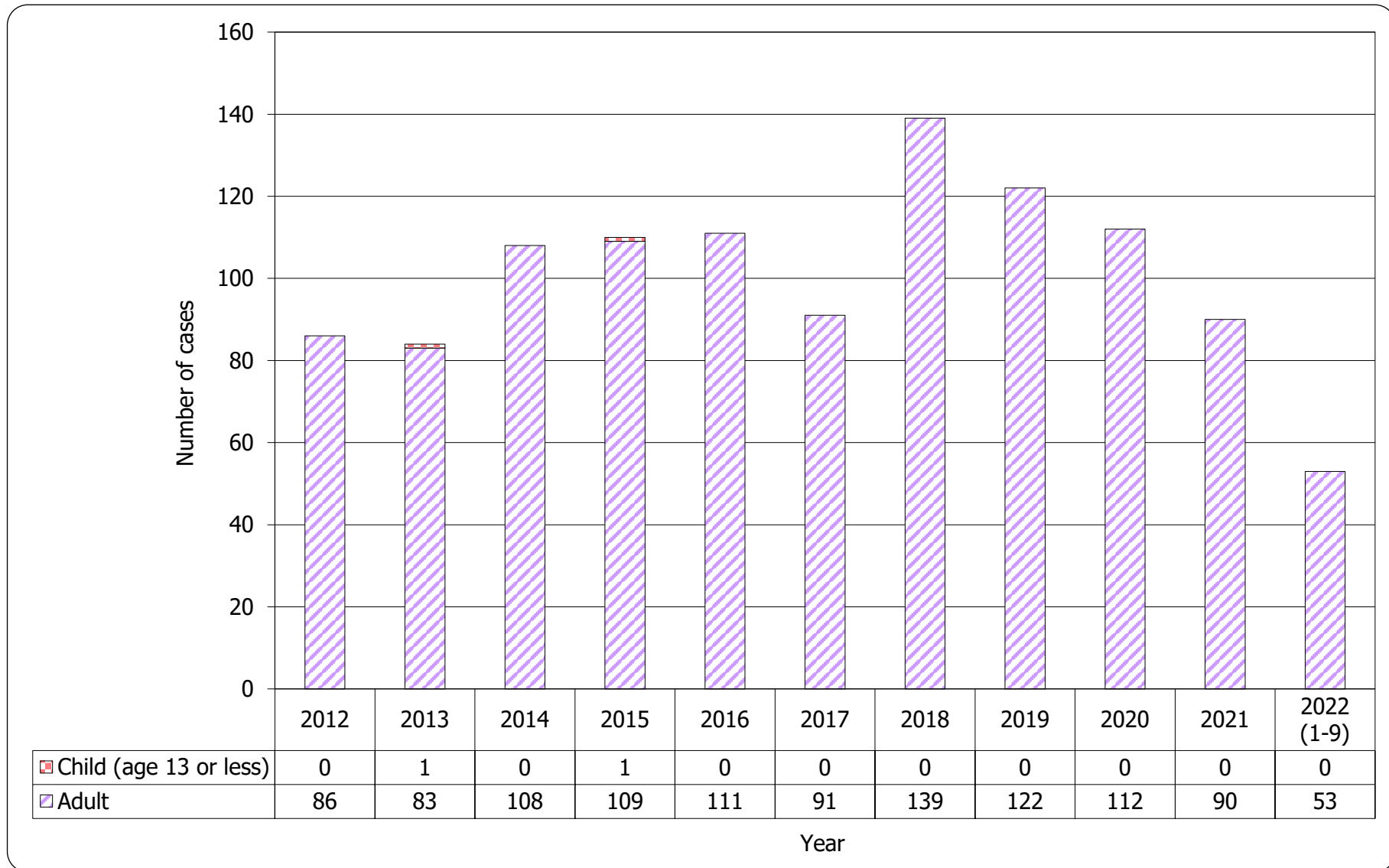
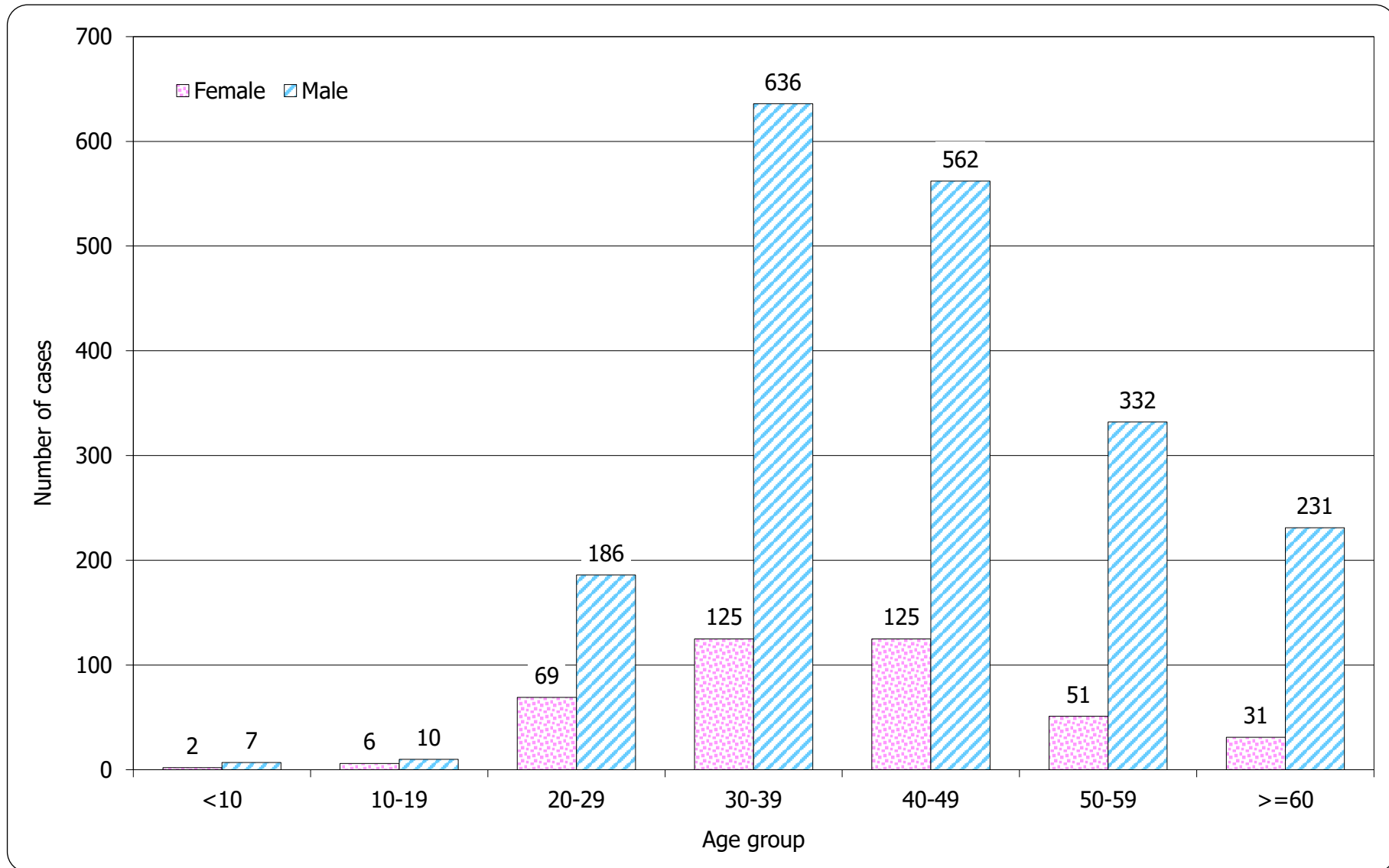


Chart 4.4 Age group & gender of total reported AIDS



5. Exposure categories of reported HIV/AIDS

Table 5.1 Exposure categories of reported HIV

	This quarter (Jul - Sep 2022)	Last quarter (Apr - Jun 2022)	Same quarter last year (Jul - Sep 2021)	Cumulative (1984 – Sep 2022)
Heterosexual	26	30	31	3,709
Homosexual	35	57	46	4,805
Bisexual	6	11	9	677
Injecting drug use	1	0	0	374
Blood / blood product infusion	0	1	0	86
Perinatal	0	0	0	35
Undetermined	29	26	19	1,853
Total	97	125	105	11,539

Chart 5.1 Exposure categories of reported HIV

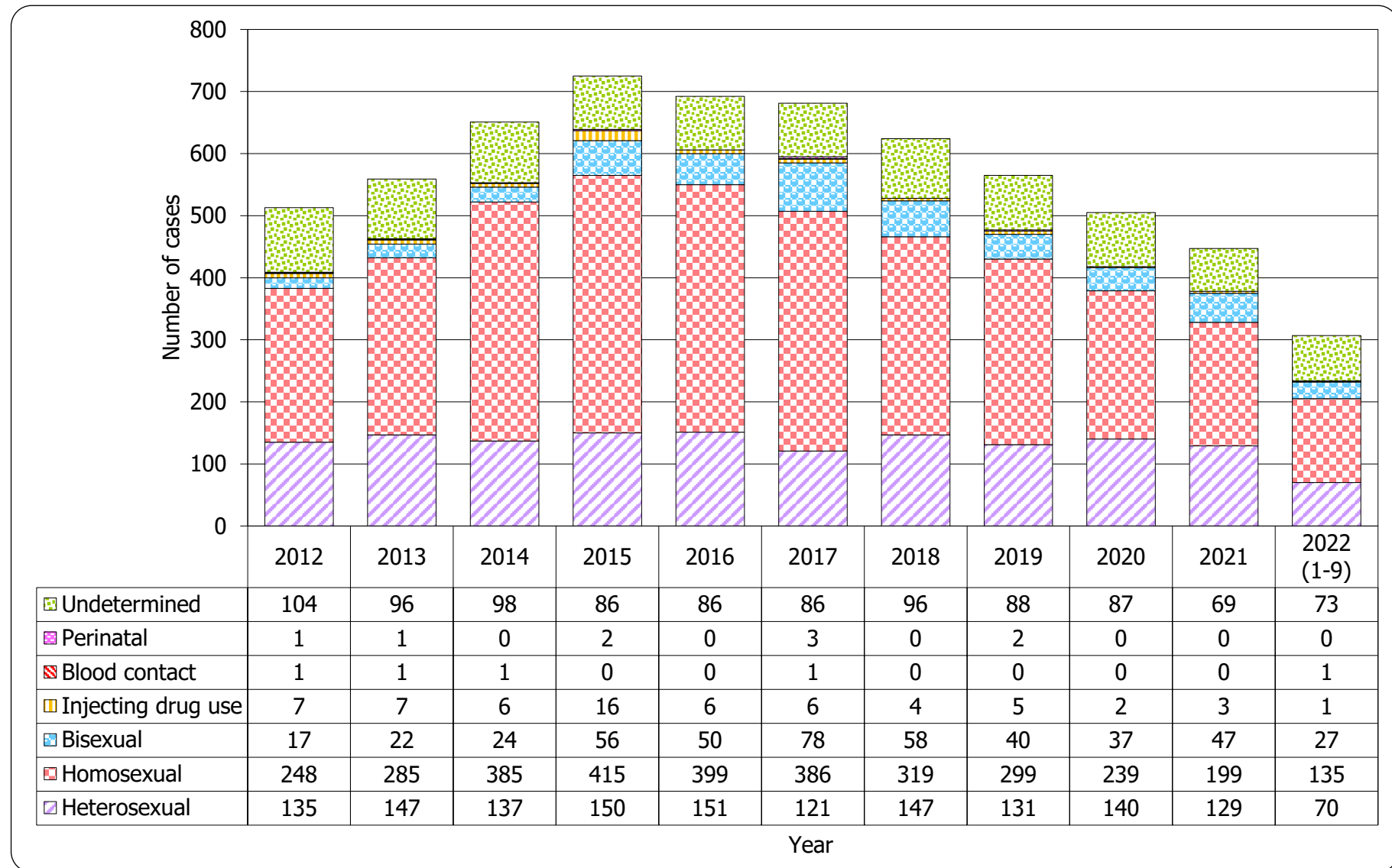
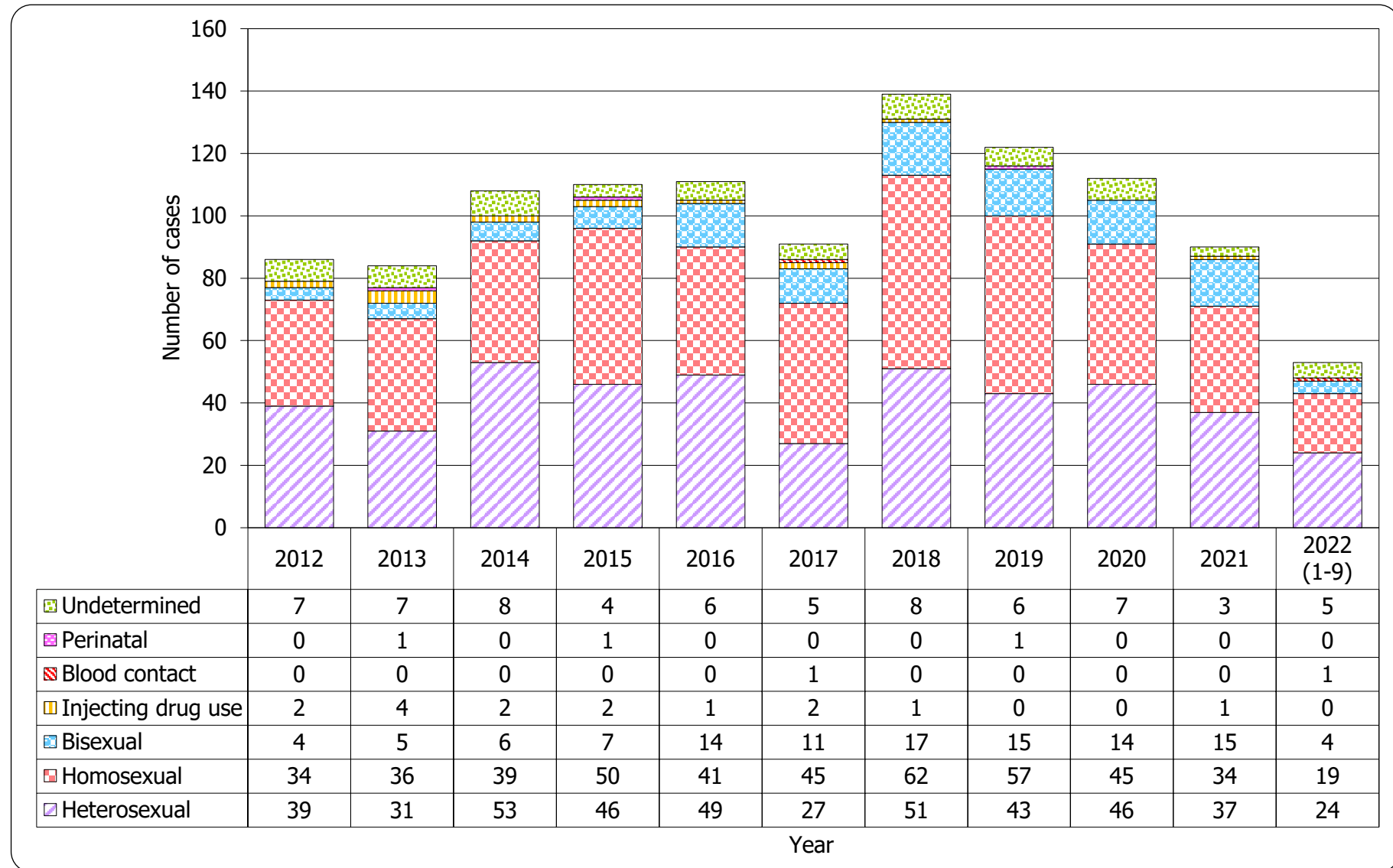


Table 5.2 Exposure categories of reported AIDS

	This quarter (Jul - Sep 2022)	Last quarter (Apr - Jun 2022)	Same quarter last year (Jul - Sep 2021)	Cumulative (1984 – Sep 2022)
Heterosexual	7	10	6	1,198
Homosexual	4	9	7	748
Bisexual	0	1	3	164
Injecting drug use	0	0	0	68
Blood / blood product infusion	0	1	0	26
Perinatal	0	0	0	11
Undetermined	1	2	1	158
Total	12	23	17	2,373

Chart 5.2 Exposure categories of reported AIDS



6. Ratio (heterosexual : homosexual / bisexual) of sexually acquired HIV infection in men

Table 6.1 Ratio of sexually acquired infection in men with reported HIV/AIDS (heterosexual : homo / bisexual) by quarter

	This quarter (Jul - Sep 2022)	Last quarter (Apr - Jun 2022)	Same quarter last year (Jul - Sep 2021)	Cumulative (1984 – Sep 2022)
HIV	0.3 : 1	0.2 : 1	0.3 : 1	0.4 : 1
AIDS	1.0 : 1	0.5 : 1	0.4 : 1	0.9 : 1

Table 6.2 Ratio of sexually acquired infection in men with reported HIV/AIDS (heterosexual : homo / bisexual) by year

	2012	2013	2014	2015	2016	2017	2018	2019	2020	2021	2022 (1-9)	1984 – Sep 2022
HIV	0.3 : 1	0.2 : 1	0.2 : 1	0.2 : 1	0.2 : 1	0.1 : 1	0.2 : 1	0.2 : 1	0.3 : 1	0.3 : 1	0.2 : 1	0.4 : 1
AIDS	0.6 : 1	0.4 : 1	0.7 : 1	0.5 : 1	0.5 : 1	0.3 : 1	0.3 : 1	0.4 : 1	0.4 : 1	0.5 : 1	0.5 : 1	0.9 : 1

7. Injecting drug users in reported HIV/AIDS

Table 7.1 Injecting drug users in reported HIV/AIDS

	This quarter (Jul - Sep 2022)	Last quarter (Apr - Jun 2022)	Same quarter last year (Jul - Sep 2021)	Cumulative (1984 – Sep 2022)
HIV (% of reported HIV)	1 1.0%	0 0.0%	0 0.0%	374 3.2%
AIDS (% of reported AIDS)	0 0.0%	0 0.0%	0 0.0%	68 2.9%

Table 7.2 Number of injecting drug user in reported HIV/AIDS by year

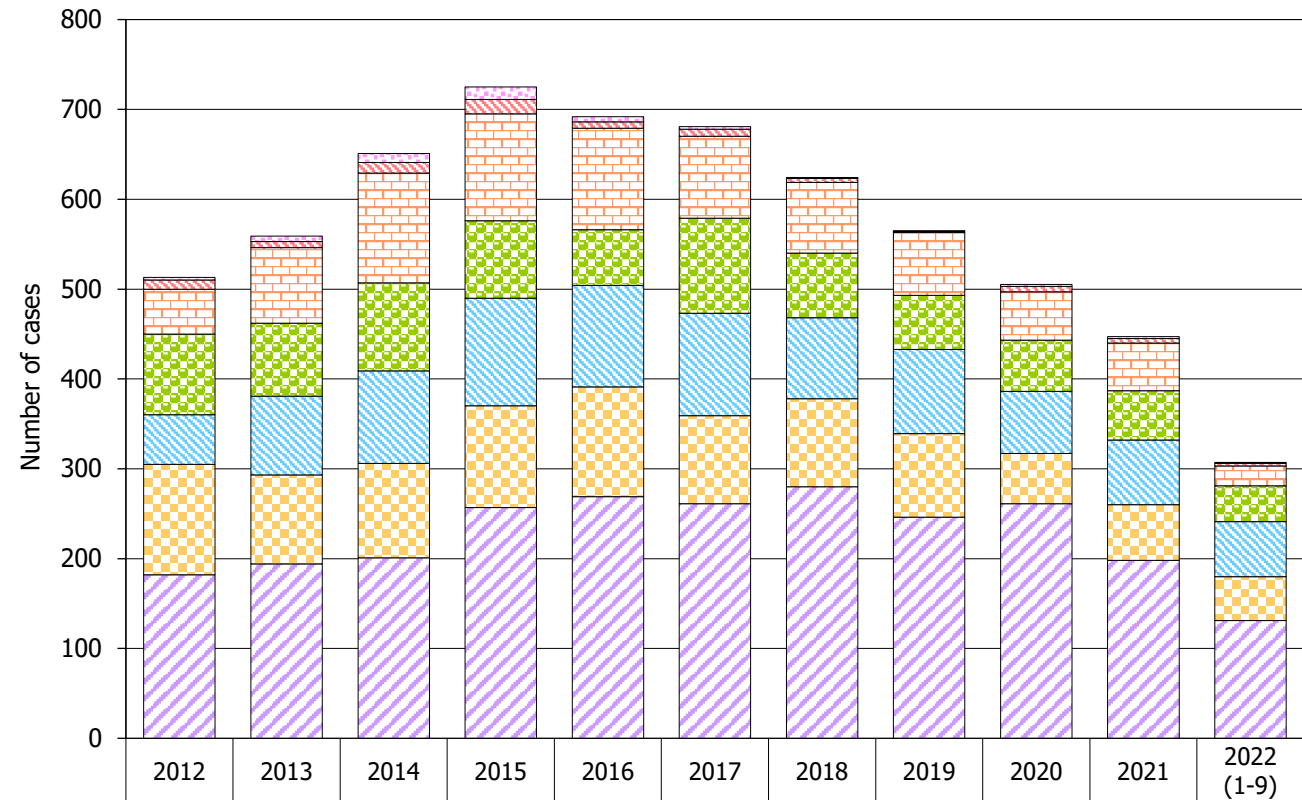
	2012	2013	2014	2015	2016	2017	2018	2019	2020	2021	2022 (1-9)	1984 – Sep 2022
HIV (% of reported HIV)	7 (1.4%)	7 (1.3%)	6 (0.9%)	16 (2.2%)	6 (0.9%)	6 (0.9%)	4 (0.6%)	5 (0.9%)	2 (0.4%)	3 (0.7%)	1 (0.3%)	374 (3.2%)
AIDS (% of reported AIDS)	2 (2.3%)	4 (4.8%)	2 (1.9%)	2 (1.8%)	1 (0.9%)	2 (2.2%)	1 (0.7%)	0 (0.0%)	0 (0.0%)	1 (1.1%)	0 (0.0%)	68 (2.9%)

8. Source of referral of reported HIV/AIDS

Table 8.1 Source of referral of reported HIV

	This quarter (Jul - Sep 2022)	Last quarter (Apr - Jun 2022)	Same quarter last year (Jul - Sep 2021)	Cumulative (1984 – Sep 2022)
Public hospitals / clinics / laboratories	39	54	47	4,770
Private hospitals / clinics / laboratories	13	17	11	2,197
Social Hygiene Clinics	18	29	16	1,685
DH AIDS Unit	14	14	14	1,457
AIDS service organisations (NGOs)	11	10	15	1,115
Hong Kong Red Cross Blood Transfusion Service	1	1	1	179
Drug rehabilitation services	1	0	1	136
Total	97	125	105	11,539

Chart 8.1 Source of referral of reported HIV



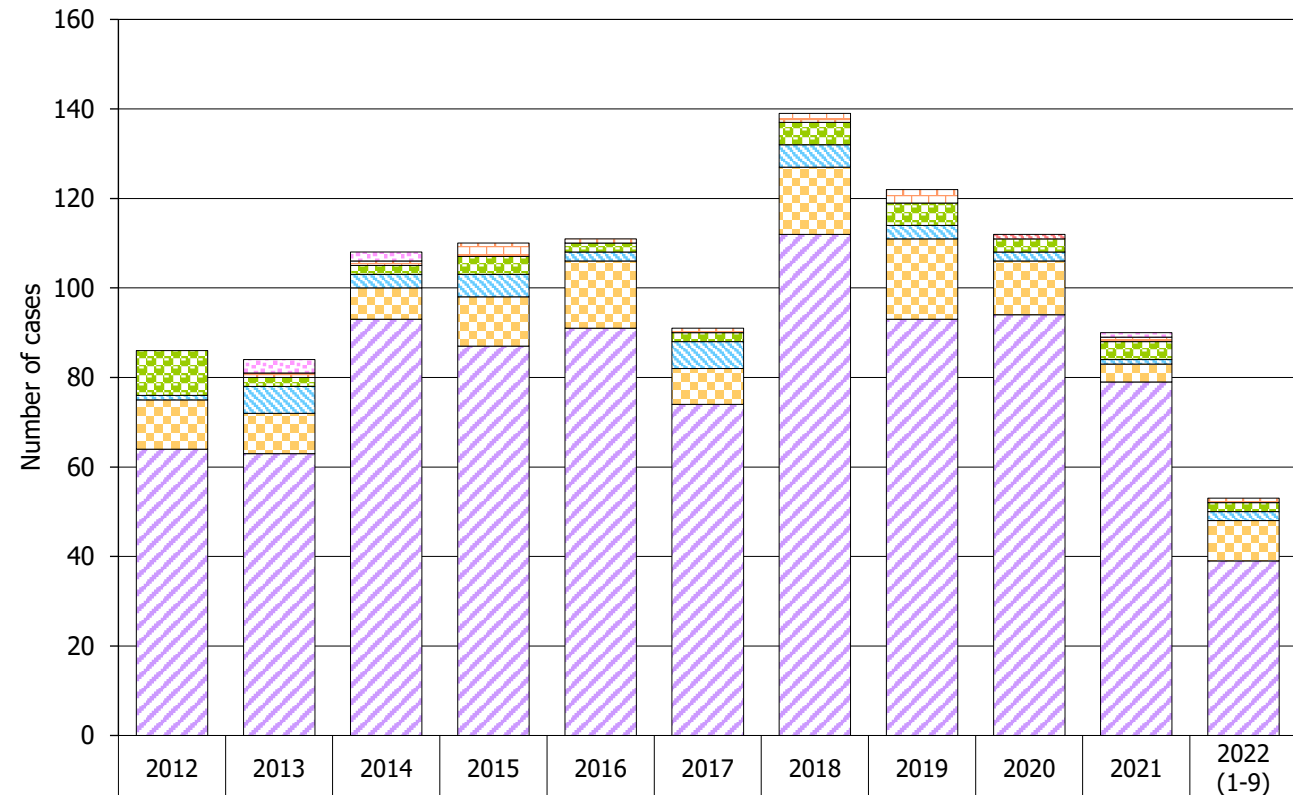
	2012	2013	2014	2015	2016	2017	2018	2019	2020	2021	2022 (1-9)
Drug rehabilitation services	3	6	10	14	6	3	1	1	2	2	1
Hong Kong Red Cross Blood Transfusion Service	10	7	12	16	7	8	4	1	6	5	3
AIDS service organisations (NGOs)	50	84	122	119	113	91	79	70	54	53	22
DH AIDS Unit	90	81	98	86	62	106	72	60	57	55	40
Social Hygiene Clinics	55	88	103	120	113	114	90	94	69	72	61
Private hospitals / clinics / laboratories	123	99	105	113	122	98	98	93	56	62	49
Public hospitals / clinics / laboratories	182	194	201	257	269	261	280	246	261	198	131

Year

Table 8.2 Source of referral of reported AIDS

	This quarter (Jul - Sep 2022)	Last quarter (Apr - Jun 2022)	Same quarter last year (Jul - Sep 2021)	Cumulative (1984 – Sep 2022)
Public hospitals / clinics / laboratories	8	15	15	1,835
Private hospitals / clinics / laboratories	1	6	1	300
Social Hygiene Clinics	2	0	0	81
DH AIDS Unit	1	1	1	120
AIDS service organisations (NGOs)	0	1	0	20
Hong Kong Red Cross Blood Transfusion Service	0	0	0	10
Drug rehabilitation services	0	0	0	7
Total	12	23	17	2,373

Chart 8.2 Source of referral of Reported AIDS



Drug rehabilitation services	0	3	2	0	0	0	0	0	0	1	0
Hong Kong Red Cross Blood Transfusion Service	0	0	0	0	0	0	0	0	1	0	0
AIDS service organisations (NGOs)	0	1	1	3	1	1	2	3	0	1	1
DH AIDS Unit	10	2	2	4	2	2	5	5	3	4	2
Social Hygiene Clinics	1	6	3	5	2	6	5	3	2	1	2
Private hospitals / clinics / laboratories	11	9	7	11	15	8	15	18	12	4	9
Public hospitals / clinics / laboratories	64	63	93	87	91	74	112	93	94	79	39

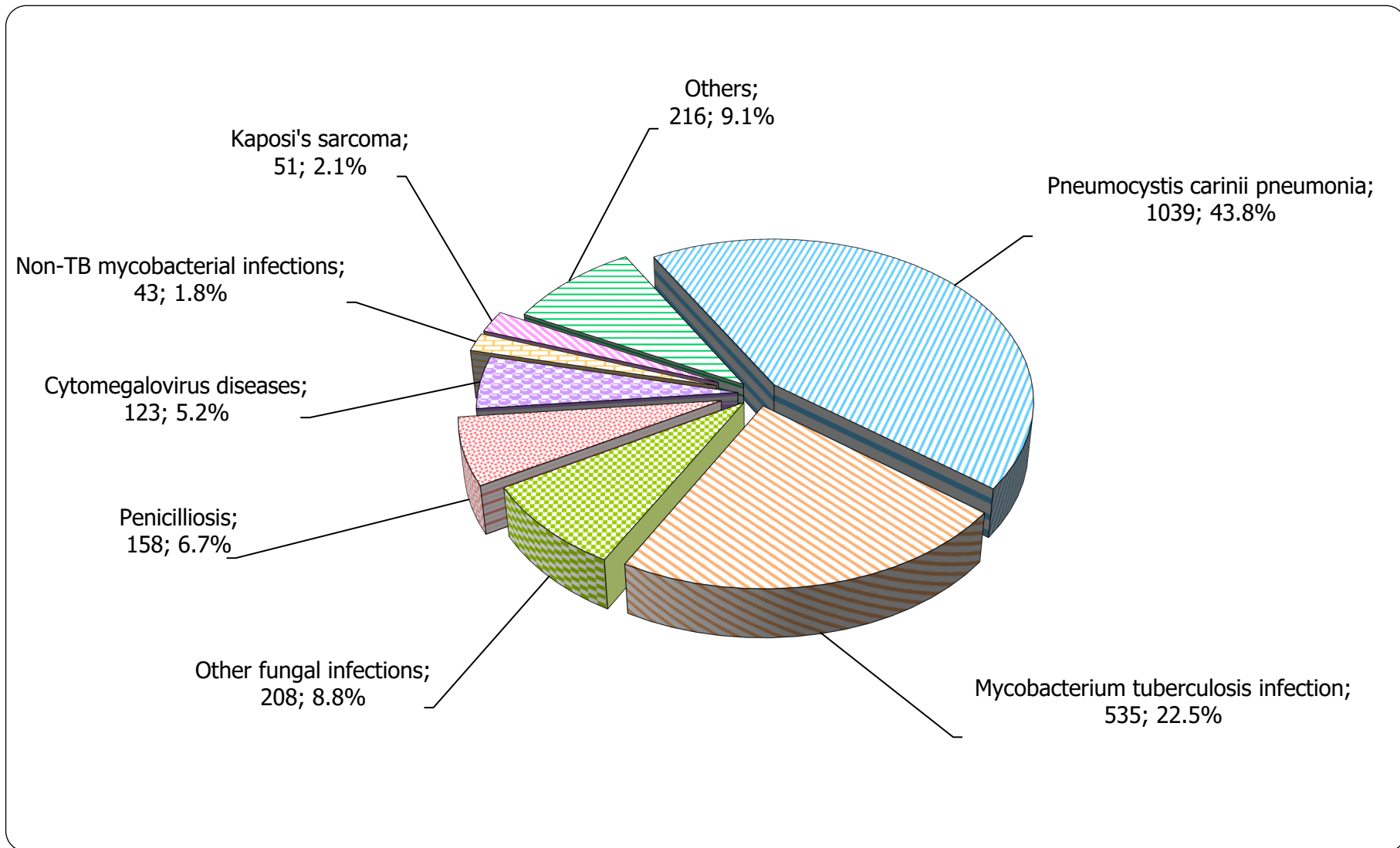
Year

9. Distribution of AIDS defining illnesses

Table 9.1 Distribution of AIDS defining illness of reported AIDS

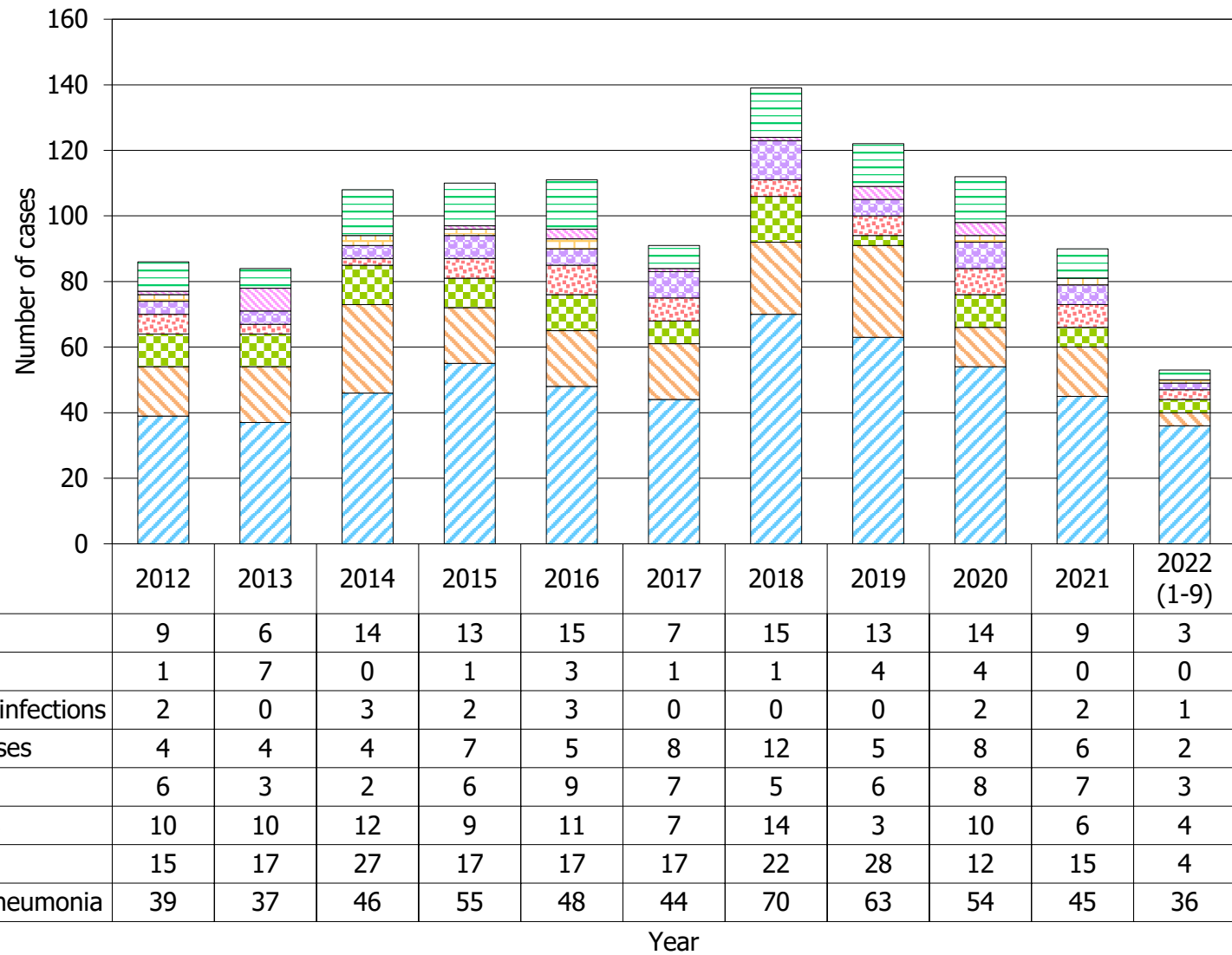
	This quarter (Jul - Sep 2022)	Last quarter (Apr - Jun 2022)	Same quarter last year (Jul - Sep 2021)	Cumulative (1984 – Sep 2022)
<i>Pneumocystis carinii pneumonia</i>	5	17	7	1,039
<i>Mycobacterium tuberculosis</i>	3	1	5	535
Other fungal infections	0	2	2	208
Penicilliosis	1	2	2	158
Cytomegalovirus diseases	0	1	0	123
Non-TB mycobacterial infections	1	0	0	43
Kaposi's sarcoma	0	0	0	51
Others	2	0	1	216
Total	12	23	17	2,373

Chart 9.1 AIDS defining illness of total reported AIDS



Format: [ADI; Number; %]

Chart 9.2 AIDS defining illness of reported AIDS by year



10. Reported sexually transmitted infections (STIs) diagnosed in Social Hygiene Service

Table 10.1 Summary table on the reported STIs diagnosed in Social Hygiene Service

	This quarter (Jul - Sep 2022)	Last quarter (Apr - Jun 2022)	Same quarter last year (Jul - Sep 2021)	In year 2021
Syphilis				
<i>Primary</i>	17	19	20	67
<i>Secondary</i>	54	48	65	202
<i>Early latent</i>	70	44	78	263
<i>Late latent</i>	132	100	125	438
<i>Late (cardiovascular / neuro / ocular)</i>	3	2	0	4
<i>Congenital (early)</i>	0	0	0	1
<i>Congenital (late)</i>	0	0	0	0
Syphilis total	276	213	288	975

(to be cont'd)

Table 10.1 (cont'd)

	This quarter (Jul - Sep 2022)	Last quarter (Apr - Jun 2022)	Same quarter last year (Jul - Sep 2021)	In year 2021
Gonorrhoea	403	384	596	2,032
Non-gonococcal urethritis (Male)	694	616	876	3,170
Non-specific genital infection (Female)	449	389	536	1,919
Genital wart	305	317	413	1,395
Herpes genitalis	128	107	132	484
Pediculosis pubis	15	17	11	35
Trichomonas	62	35	54	199
Genital ulcer	1	0	0	0
Chancroid / Lymphogranuloma venereum	0	0	0	0
Others	115	186	210	543
Total	2,448	2,264	3,116	10,752

11. Gender distribution of reported STIs

Table 11.1 Gender distribution of selected STI reported by Social Hygiene Service

	This quarter (Jul - Sep 2022)	Last quarter (Apr - Jun 2022)	Same quarter last year (Jul - Sep 2021)	In year 2021
Primary Syphilis				
Male (M)	17	18	20	66
Female (F)	0	1	0	1
M : F	N.A.	18.0 : 1	N.A.	66.0 : 1
Gonorrhoea				
Male (M)	348	347	527	1,769
Female (F)	55	37	69	263
M : F	6.3 : 1	9.4 : 1	7.6 : 1	6.7 : 1
NGU / NSGI *				
Male (M)	694	616	876	3,170
Female (F)	449	389	536	1,919
M : F	1.5 : 1	1.6 : 1	1.6 : 1	1.7 : 1

(to be cont'd)

Table 11.1 (cont'd)

	This quarter (Jul - Sep 2022)	Last quarter (Apr - Jun 2022)	Same quarter last year (Jul - Sep 2021)	In year 2021
Genital wart				
Male (M)	245	247	330	1,074
Female (F)	60	70	83	321
M : F	4.1 : 1	3.5 : 1	4.0 : 1	3.3 : 1
<i>Herpes genitalis</i>				
Male (M)	72	57	78	311
Female (F)	56	50	54	173
M : F	1.3 : 1	1.1 : 1	1.4 : 1	1.8 : 1

* NGU = Non-gonococcal urethritis

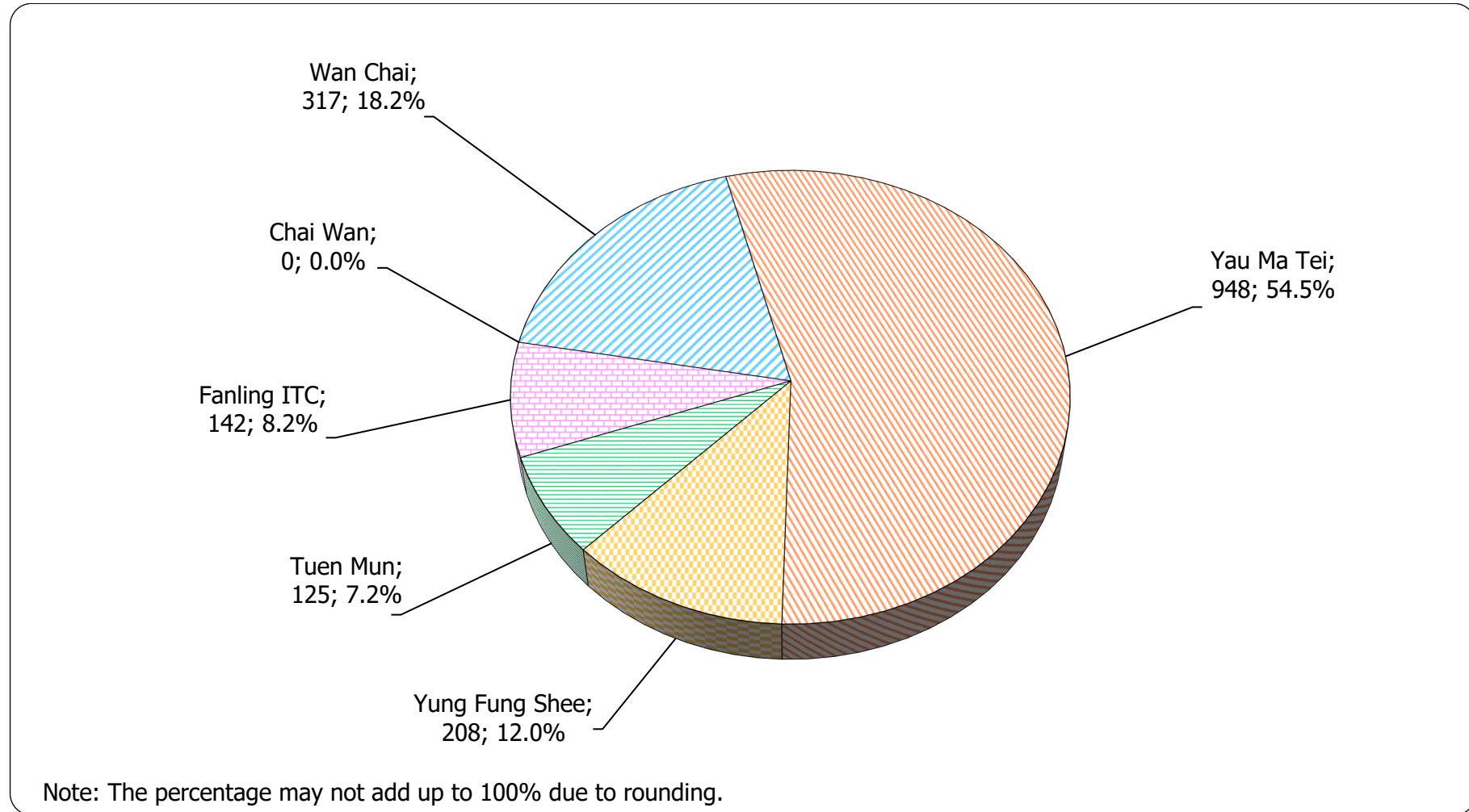
NSGI = Non-specific genital infection

Table 11.2 Gender distribution of reported STI by clinic

	This quarter (Jul - Sep 2022)		Last quarter (Apr - Jun 2022)		Same quarter last year (Jul - Sep 2021)		In year 2021	
	Male	Female	Male	Female	Male	Female	Male	Female
Chai Wan	0	0	0	0	0	0	0	0
Wan Chai	317	449	306	379	357	440	753	881
Yau Ma Tei	948	0	803	0	1,153	0	4,296	120
Yung Fung Shee	208	137	158	130	233	218	954	1,059
Tuen Mun	125	117	115	107	188	153	643	597
Fanling ITC	142	145	128	138	188	186	722	727
Total	1,740	848	1,510	754	2,119	997	7,368	3,384

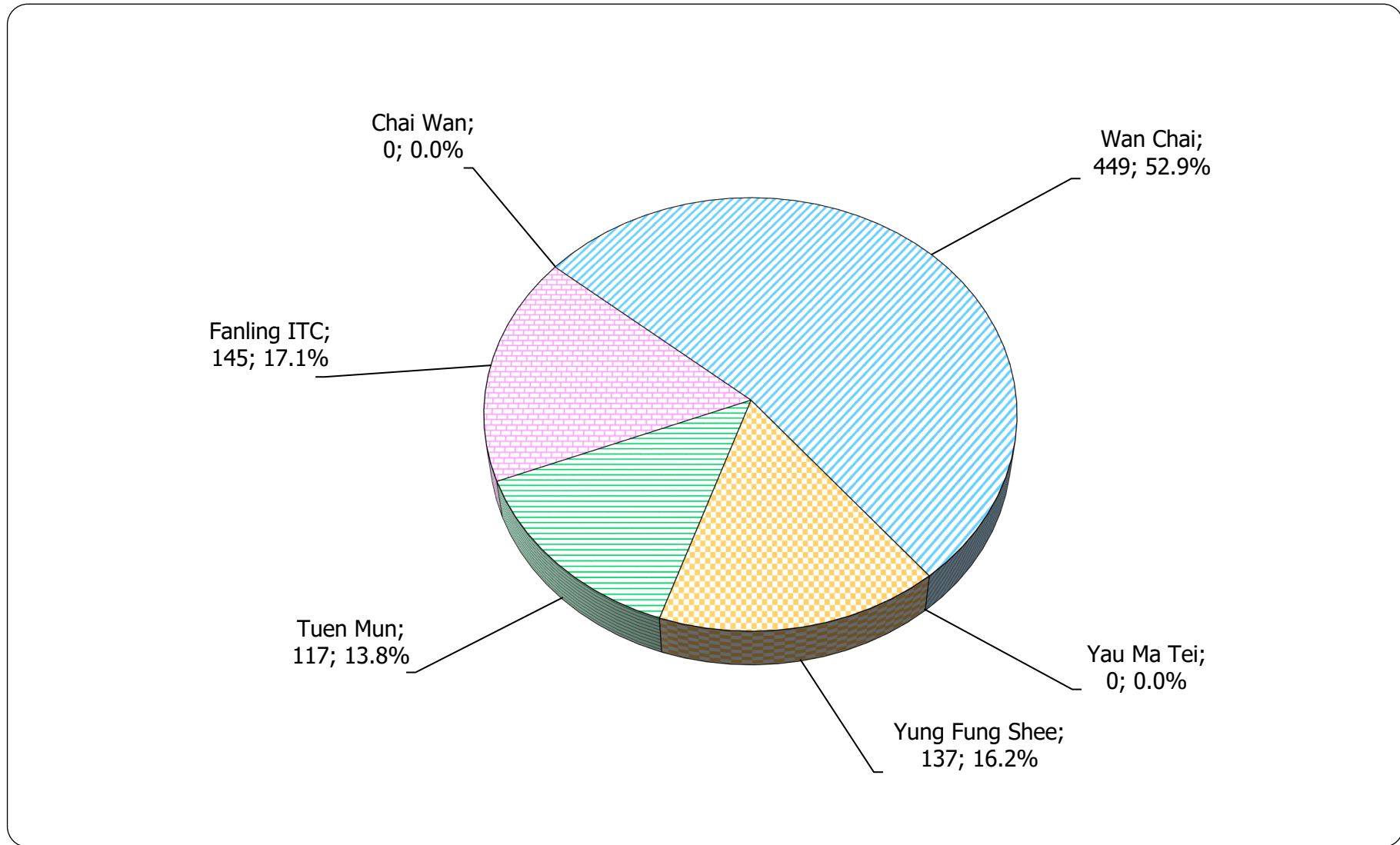
12. Clinic distribution

Chart 12.1 Number of newly report STI in Q3 2022 by clinic (male clients)



Format: [Clinic; Number; %]

Chart 12.2 Number of newly report STI in Q3 2022 by clinic (female clients)



Format: [Clinic; Number; %]