



The Hong Kong STD/AIDS update is a composite report on HIV/AIDS reporting and STI caseload statistics published three monthly. The current issue has the updated information up to March 2023.

SPP Surveillance Team:

Dr. Annie LO

Ms. Shirry WAN

Correspondence to:

Special Preventive Programme,

Centre for Health Protection, Department of Health

c/o Red Ribbon Centre, 2/F Wang Tau Hom Jockey Club Clinic,

200 Junction Road East, Kowloon, Hong Kong

Telephone: (852) 3143 7200 Facsimile: (852) 2338 0534

E-mail: aids@dh.gov.hk

List of Tables / Figures

1. NUMBER OF HIV/AIDS REPORTED	4
TABLE 1.1 SUMMARY TABLE ON THE REPORTED NUMBER OF HIV/AIDS	4
CHART 1.1 NUMBER OF HIV/AIDS REPORTED	7
2. GENDER DISTRIBUTION OF REPORTED HIV/AIDS	8
TABLE 2.1 GENDER DISTRIBUTION OF REPORTED HIV	8
CHART 2.1 GENDER DISTRIBUTION OF REPORTED HIV BY QUARTER	9
CHART 2.2 GENDER DISTRIBUTION OF REPORTED HIV BY YEAR	10
TABLE 2.2 GENDER DISTRIBUTION OF REPORTED AIDS	11
CHART 2.3 GENDER DISTRIBUTION OF REPORTED AIDS BY QUARTER	12
CHART 2.4 GENDER DISTRIBUTION OF REPORTED AIDS BY YEAR	13
3. ETHNICITY OF REPORTED HIV/AIDS	14
TABLE 3.1 DISTRIBUTION OF ETHNICITY OF REPORTED HIV	14
CHART 3.1 DISTRIBUTION OF ETHNICITY OF REPORTED HIV	15
TABLE 3.2 DISTRIBUTION OF ETHNICITY OF REPORTED AIDS	16
CHART 3.2 DISTRIBUTION OF ETHNICITY OF REPORTED AIDS	17
4. AGE DISTRIBUTION OF REPORTED HIV/AIDS	18
TABLE 4.1 AGE DISTRIBUTION OF REPORTED HIV	18
CHART 4.1 AGE DISTRIBUTION OF REPORTED HIV	19
CHART 4.2 AGE GROUP & GENDER OF TOTAL REPORTED HIV	20
TABLE 4.2 AGE DISTRIBUTION OF REPORTED AIDS	21
CHART 4.3 AGE DISTRIBUTION OF REPORTED AIDS	22
CHART 4.4 AGE GROUP & GENDER OF TOTAL REPORTED AIDS	23
5. EXPOSURE CATEGORIES OF REPORTED HIV/AIDS	24
TABLE 5.1 EXPOSURE CATEGORIES OF REPORTED HIV	24
CHART 5.1 EXPOSURE CATEGORIES OF REPORTED HIV	25
TABLE 5.2 EXPOSURE CATEGORIES OF REPORTED AIDS	26
CHART 5.2 EXPOSURE CATEGORIES OF REPORTED AIDS	27

6. RATIO (HETEROSEXUAL : HOMOSEXUAL / BISEXUAL) OF SEXUALLY ACQUIRED HIV INFECTION IN MEN	28
TABLE 6.1 RATIO OF SEXUALLY ACQUIRED INFECTION IN MEN WITH REPORTED HIV/AIDS (HETEROSEXUAL : HOMO / BISEXUAL) BY QUARTER	28
TABLE 6.2 RATIO OF SEXUALLY ACQUIRED INFECTION IN MEN WITH REPORTED HIV/AIDS (HETEROSEXUAL : HOMO / BISEXUAL) BY YEAR	29
7. INJECTING DRUG USERS IN REPORTED HIV/AIDS	30
TABLE 7.1 INJECTING DRUG USERS IN REPORTED HIV/AIDS	30
TABLE 7.2 NUMBER OF INJECTING DRUG USER IN REPORTED HIV/AIDS BY YEAR	31
8. SOURCE OF REFERRAL OF REPORTED HIV/AIDS	32
TABLE 8.1 SOURCE OF REFERRAL OF REPORTED HIV	32
CHART 8.1 SOURCE OF REFERRAL OF REPORTED HIV	33
TABLE 8.2 SOURCE OF REFERRAL OF REPORTED AIDS	34
CHART 8.2 SOURCE OF REFERRAL OF REPORTED AIDS	35
9. DISTRIBUTION OF AIDS DEFINING ILLNESSES	36
TABLE 9.1 DISTRIBUTION OF AIDS DEFINING ILLNESS OF REPORTED AIDS	36
CHART 9.1 AIDS DEFINING ILLNESS OF TOTAL REPORTED AIDS	37
CHART 9.2 AIDS DEFINING ILLNESS OF REPORTED AIDS BY YEAR	38
10. REPORTED SEXUALLY TRANSMITTED INFECTIONS (STIS) DIAGNOSED IN SOCIAL HYGIENE SERVICE	39
TABLE 10.1 SUMMARY TABLE ON THE REPORTED STIS DIAGNOSED IN SOCIAL HYGIENE SERVICE	39
11. GENDER DISTRIBUTION OF REPORTED STIS	41
TABLE 11.1 GENDER DISTRIBUTION OF SELECTED STI REPORTED BY SOCIAL HYGIENE SERVICE	41
TABLE 11.2 GENDER DISTRIBUTION OF REPORTED STI BY CLINIC	43
12. CLINIC DISTRIBUTION	44
CHART 12.1 NUMBER OF NEWLY REPORT STI IN Q1 2023 BY CLINIC (MALE CLIENTS)	44
CHART 12.2 NUMBER OF NEWLY REPORT STI IN Q1 2023 BY CLINIC (FEMALE CLIENTS)	45

1. Number of HIV/AIDS reported

Table 1.1 Summary table on the reported number of HIV/AIDS

	This quarter (Jan - Mar 2023)		Last quarter (Oct - Dec 2022)		Same quarter last year (Jan - Mar 2022)		Cumulative (1984 – Mar 2023)	
	HIV	AIDS	HIV	AIDS	HIV	AIDS	HIV	AIDS
Sex								
Male	87	32	85	7	73	13	9,628	2,003
Female	9	3	17	2	12	5	2,109	414
Ethnicity / race								
Chinese	70	29	71	7	53	12	8,176	1,866
Non-Chinese	10	6	19	2	18	6	3,164	551
<i>Asian</i>	6	4	13	2	15	6	1,641	391
<i>White</i>	2	2	1	0	3	0	661	106
<i>Black</i>	2	0	5	0	0	0	276	45
<i>Others</i>	0	0	0	0	0	0	586	9
Unknown	16	0	12	0	14	0	397	0

(to be cont'd)

Table 1.1 (cont'd)

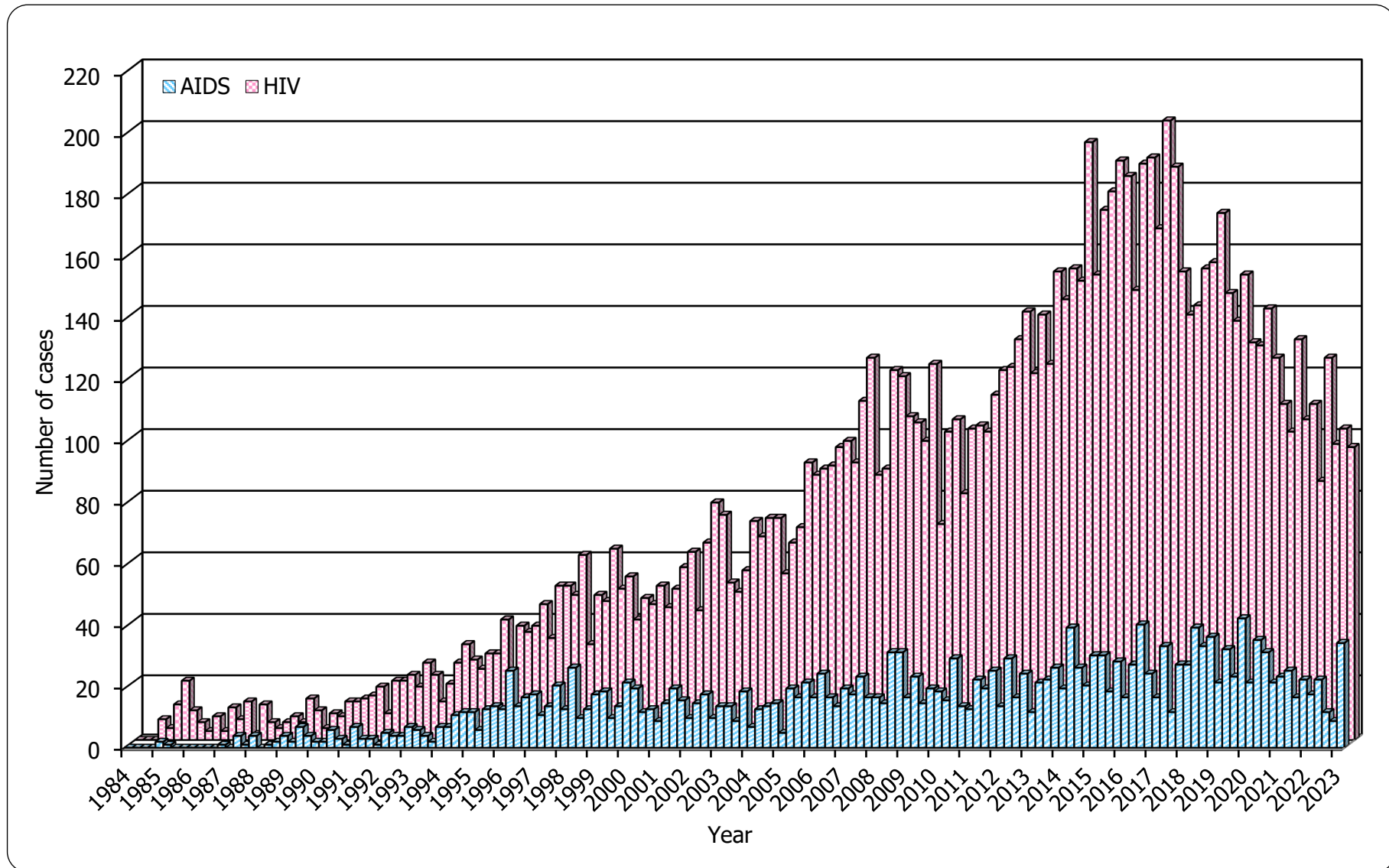
	This quarter (Jan - Mar 2023)		Last quarter (Oct - Dec 2022)		Same quarter last year (Jan - Mar 2022)		Cumulative (1984 – Mar 2023)	
	HIV	AIDS	HIV	AIDS	HIV	AIDS	HIV	AIDS
Age at diagnosis								
Adult	96	35	102	9	85	18	11,682	2,403
Child (age 13 or less)	0	0	0	0	0	0	55	14
Exposure category								
Heterosexual	19	15	33	4	14	7	3,765	1,217
Homosexual	53	17	44	4	43	6	4,910	769
Bisexual	5	2	9	0	10	3	692	166
Injecting drug use	2	1	0	0	0	0	377	69
Blood / blood product infusion	1	0	0	0	0	0	87	26
Perinatal	0	0	0	0	0	0	35	11
Undetermined	16	0	16	1	18	2	1,871	159

(to be cont'd)

Table 1.1 (cont'd)

	This quarter (Jan - Mar 2023)		Last quarter (Oct - Dec 2022)		Same quarter last year (Jan - Mar 2022)		Cumulative (1984 – Mar 2023)	
	HIV	AIDS	HIV	AIDS	HIV	AIDS	HIV	AIDS
Source of referral								
Public hospitals / clinics / laboratories	49	30	50	9	38	16	4,869	1,874
Private hospitals / clinics / laboratories	14	2	7	0	19	2	2,218	302
Social Hygiene Clinics	9	2	15	0	14	0	1,709	83
DH AIDS Unit	12	1	13	0	12	0	1,482	121
AIDS service organisations (NGOs)	11	0	16	0	1	0	1,142	20
Hong Kong Red Cross Blood Transfusion Service	1	0	1	0	1	0	181	10
Drug rehabilitation services	0	0	0	0	0	0	136	7
Total	96	35	102	9	85	18	11,737	2,417

Chart 1.1 Number of HIV/AIDS reported



2. Gender distribution of reported HIV/AIDS

Table 2.1 Gender distribution of reported HIV

	This quarter (Jan - Mar 2023)	Last quarter (Oct - Dec 2022)	Same quarter last year (Jan - Mar 2022)	Cumulative (1984 – Mar 2023)
Male	87	85	73	9,628
Female	9	17	12	2,109
Total	96	102	85	11,737

Chart 2.1 Gender distribution of reported HIV by quarter

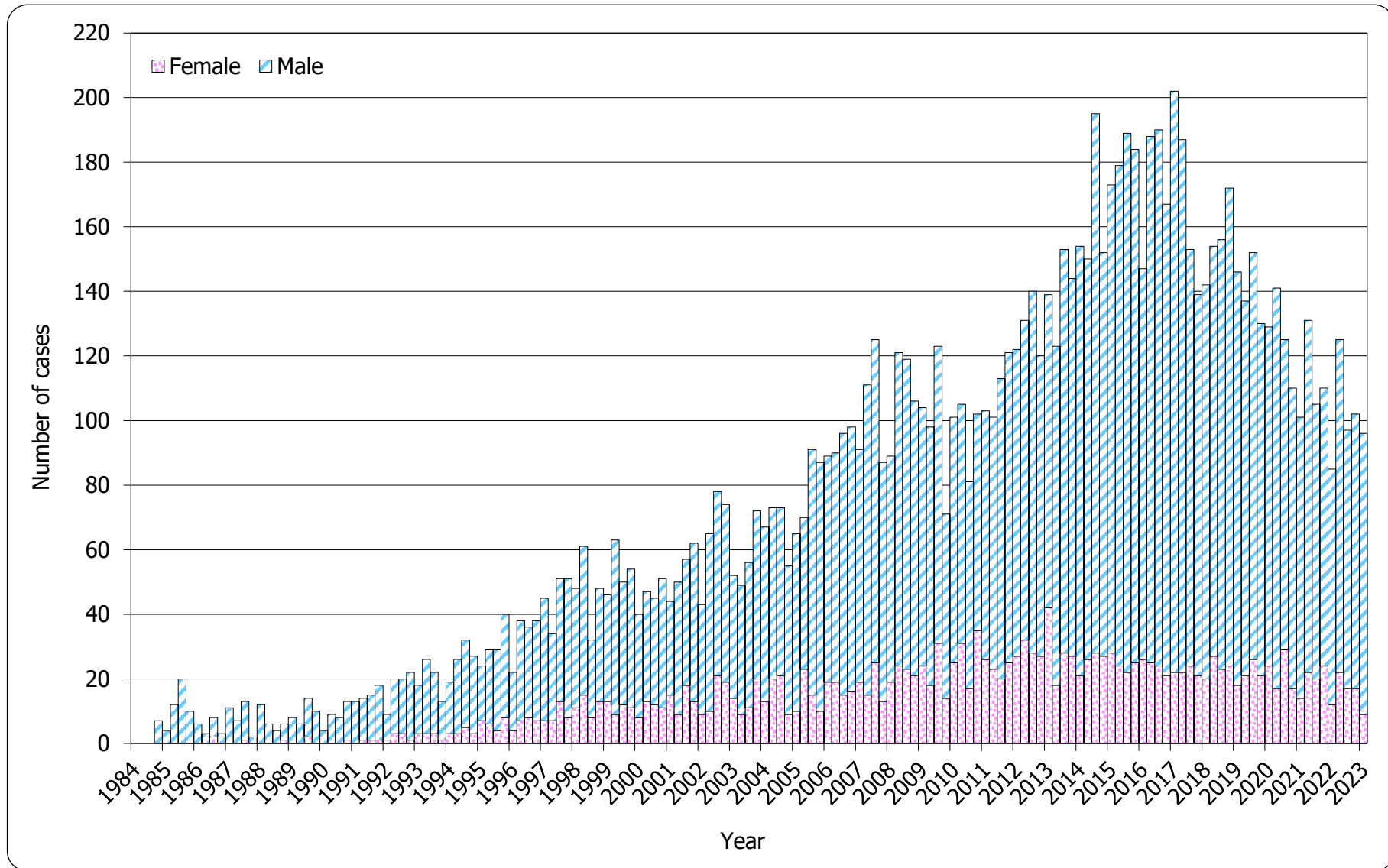


Chart 2.2 Gender distribution of reported HIV by year

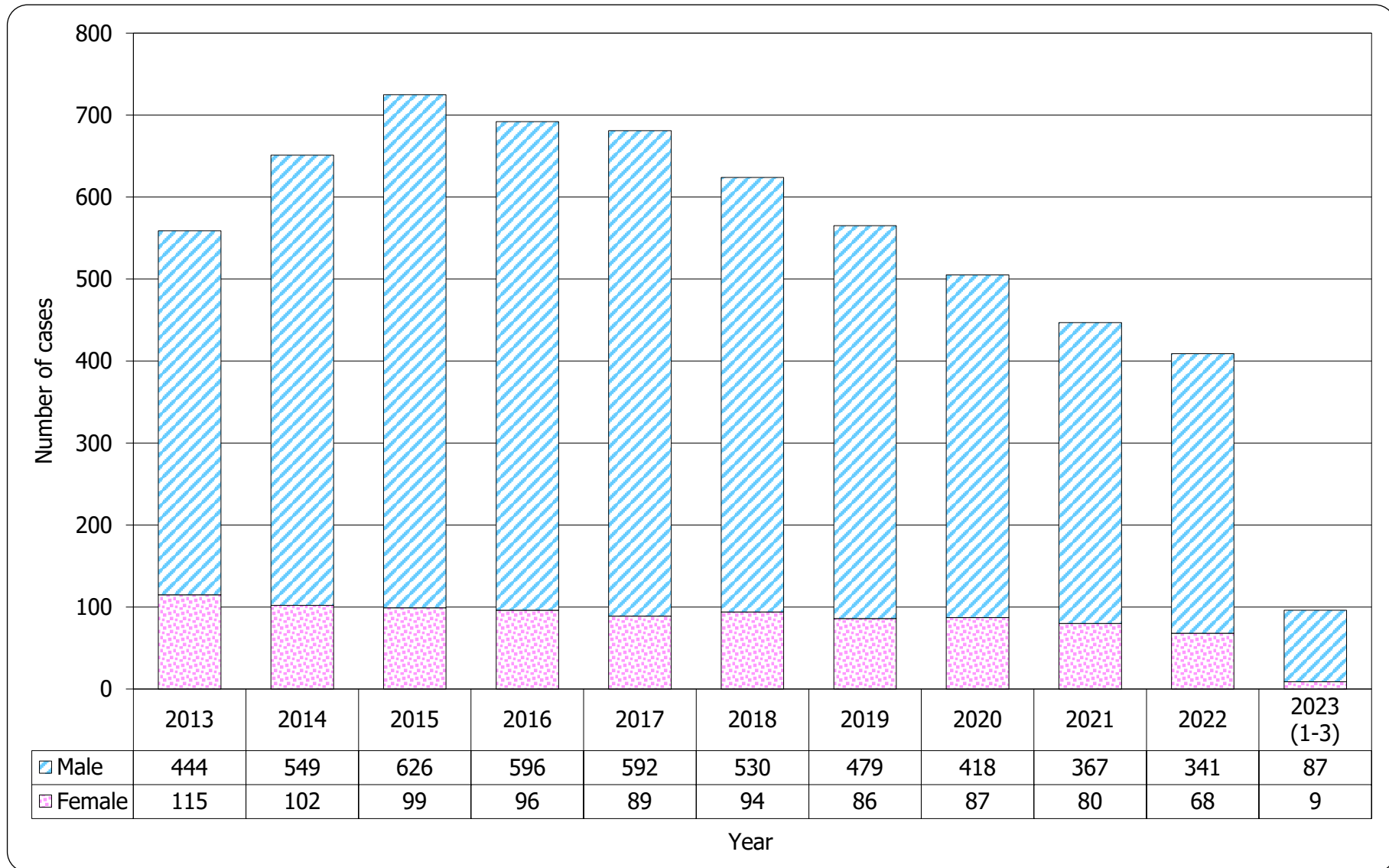


Table 2.2 Gender distribution of reported AIDS

	This quarter (Jan - Mar 2023)	Last quarter (Oct - Dec 2022)	Same quarter last year (Jan - Mar 2022)	Cumulative (1984 – Mar 2023)
Male	32	7	13	2,003
Female	3	2	5	414
Total	35	9	18	2,417

Chart 2.3 Gender distribution of reported AIDS by quarter

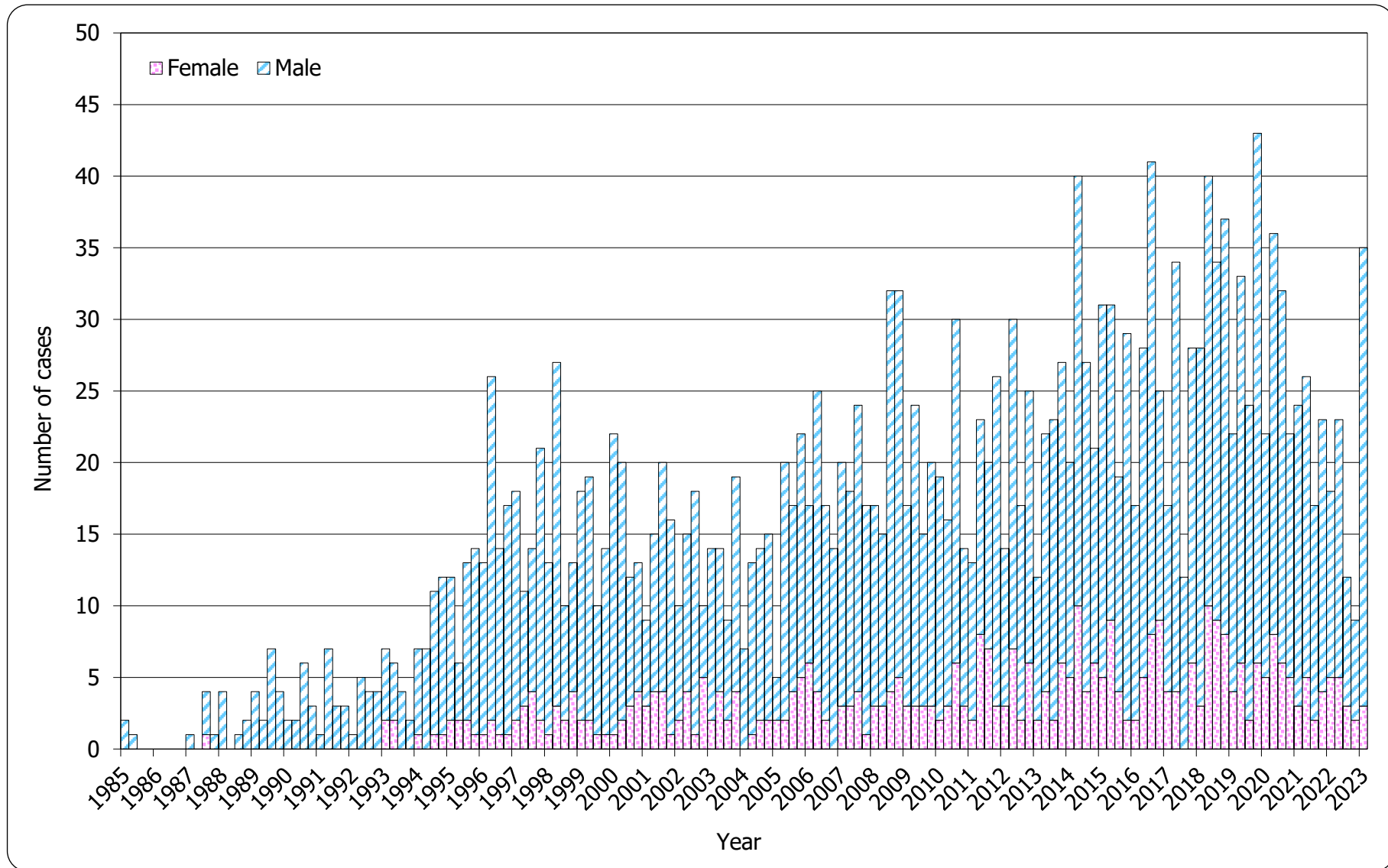
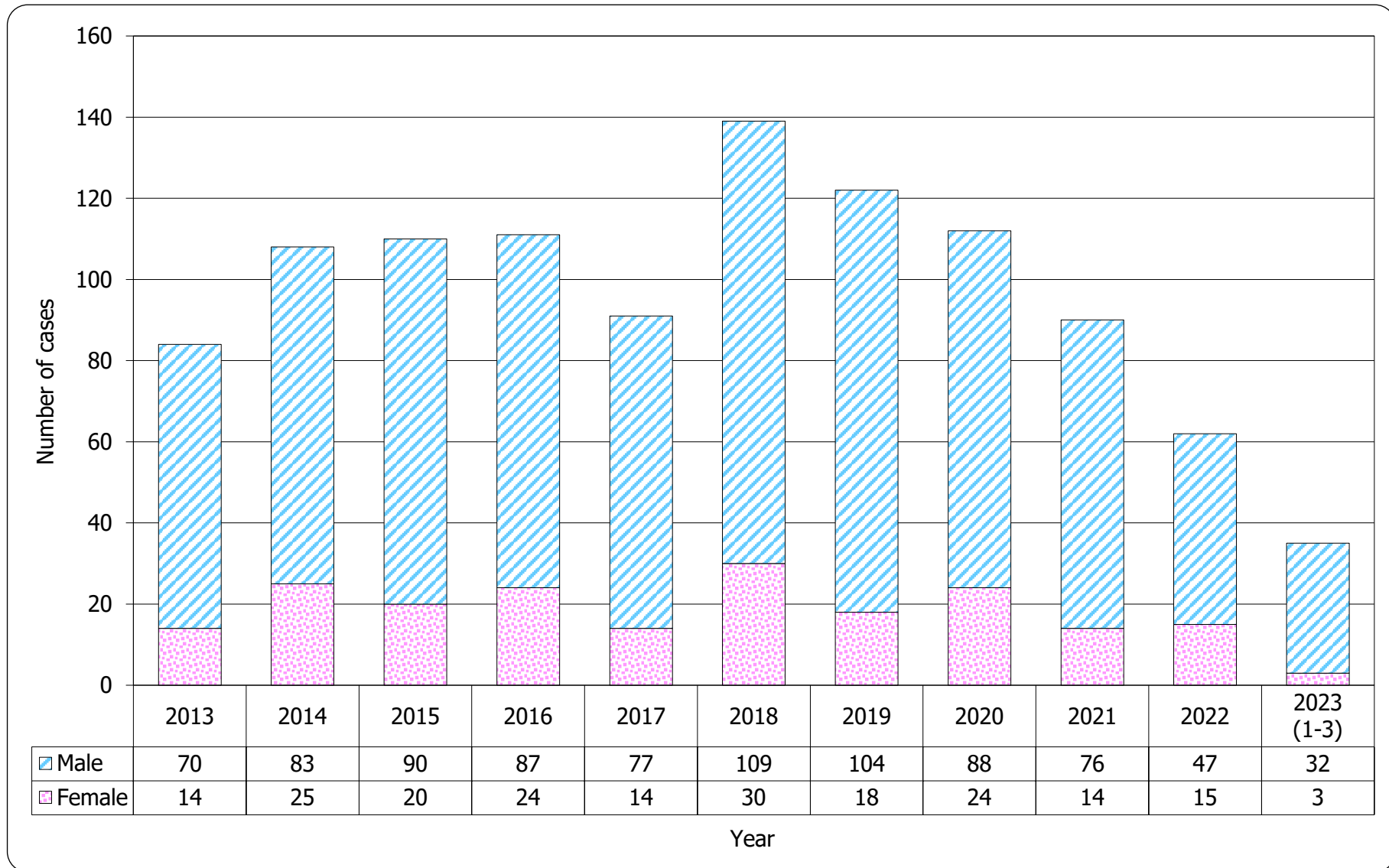


Chart 2.4 Gender distribution of reported AIDS by year



3. Ethnicity of reported HIV/AIDS

Table 3.1 Distribution of ethnicity of reported HIV

	This quarter (Jan - Mar 2023)	Last quarter (Oct - Dec 2022)	Same quarter last year (Jan - Mar 2022)	Cumulative (1984 – Mar 2023)
Chinese	70	71	53	8,176
Non-Chinese	10	19	18	3,164
<i>Asian</i>	6	13	15	1,641
<i>White</i>	2	1	3	661
<i>Black</i>	2	5	0	276
<i>Others</i>	0	0	0	586
Unknown	16	12	14	397
Total	96	102	85	11,737

Chart 3.1 Distribution of ethnicity of reported HIV

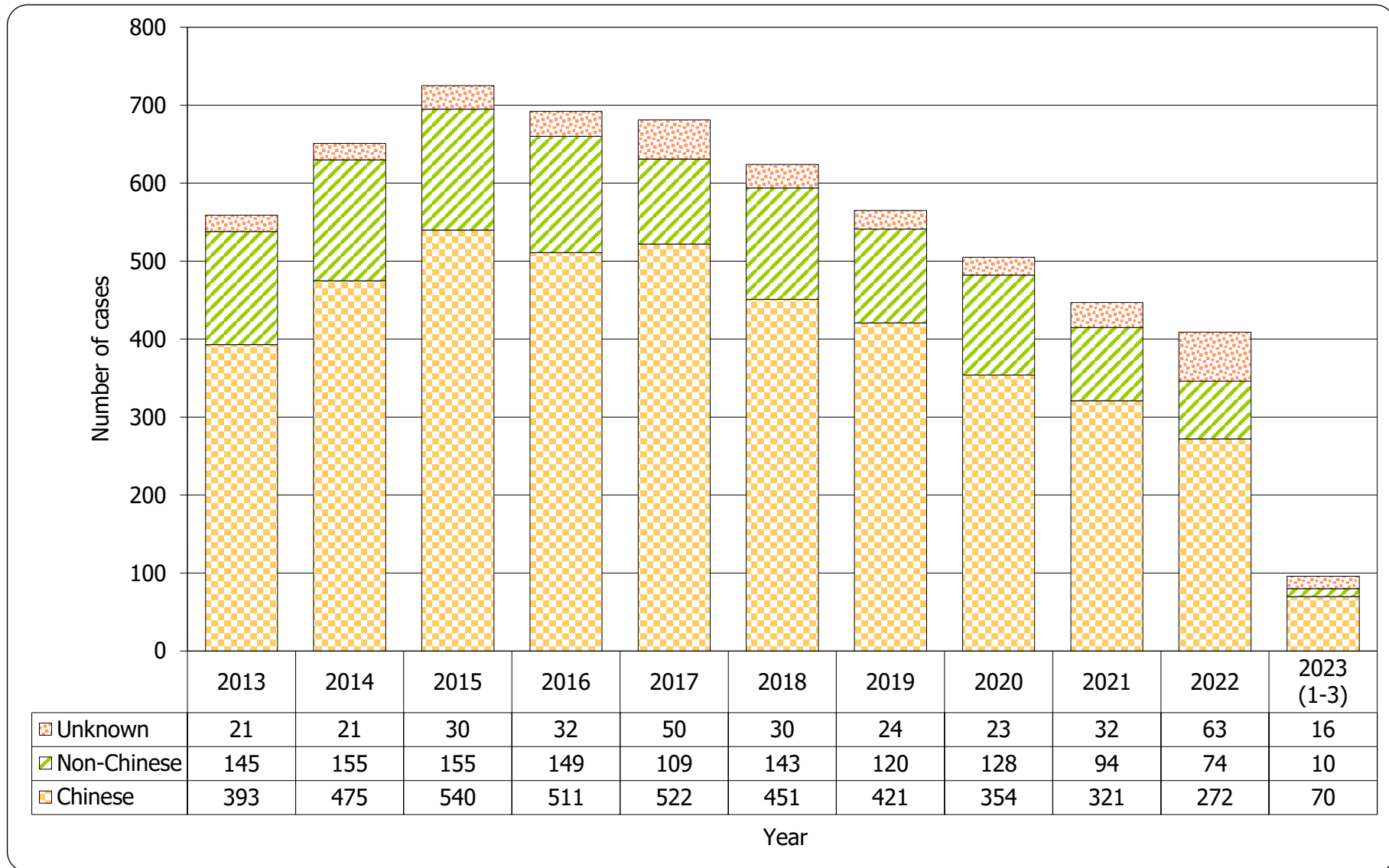
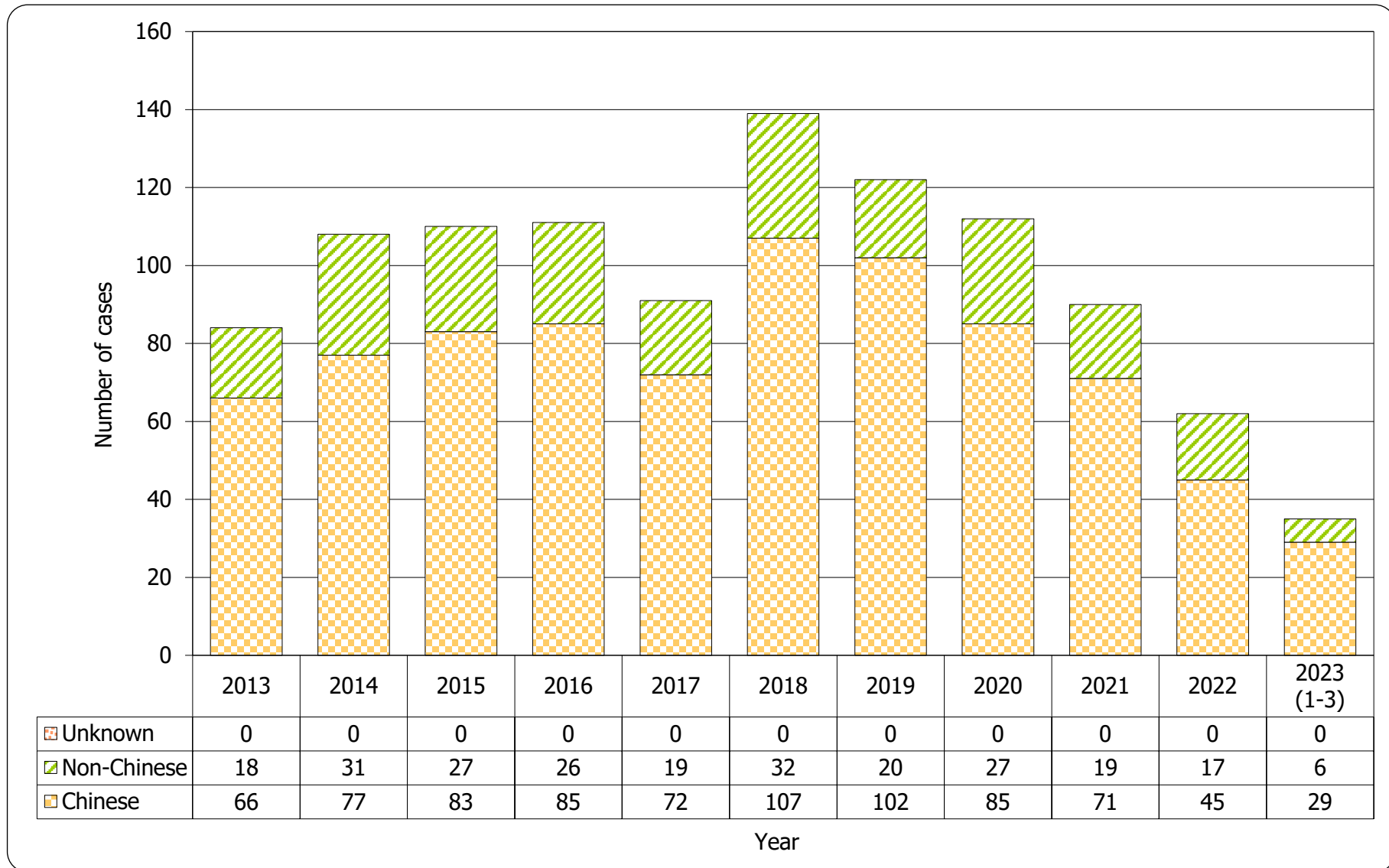


Table 3.2 Distribution of ethnicity of reported AIDS

	This quarter (Jan - Mar 2023)	Last quarter (Oct - Dec 2022)	Same quarter last year (Jan - Mar 2022)	Cumulative (1984 – Mar 2023)
Chinese	29	7	12	1,866
Non-Chinese	6	2	6	551
<i>Asian</i>	4	2	6	391
<i>White</i>	2	0	0	106
<i>Black</i>	0	0	0	45
<i>Others</i>	0	0	0	9
Unknown	0	0	0	0
Total	35	9	18	2,417

Chart 3.2 Distribution of ethnicity of reported AIDS



4. Age distribution of reported HIV/AIDS

Table 4.1 Age distribution of reported HIV

	This quarter (Jan - Mar 2023)	Last quarter (Oct - Dec 2022)	Same quarter last year (Jan - Mar 2022)	Cumulative (1984 – Mar 2023)
Adult	96	102	85	11,682
Child (age 13 or less)	0	0	0	55
Total	96	102	85	11,737

Chart 4.1 Age distribution of reported HIV

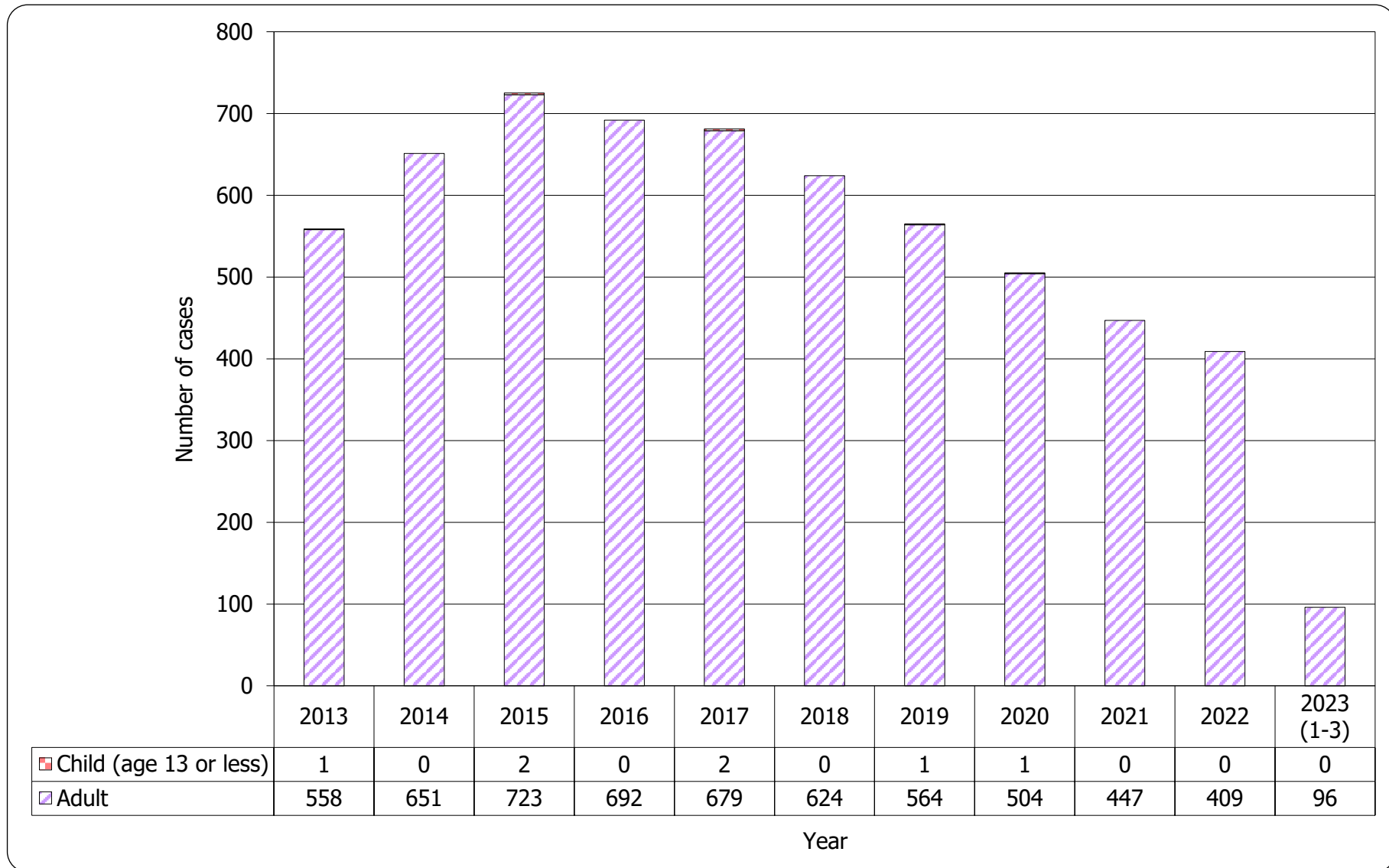


Chart 4.2 Age group & gender of total reported HIV

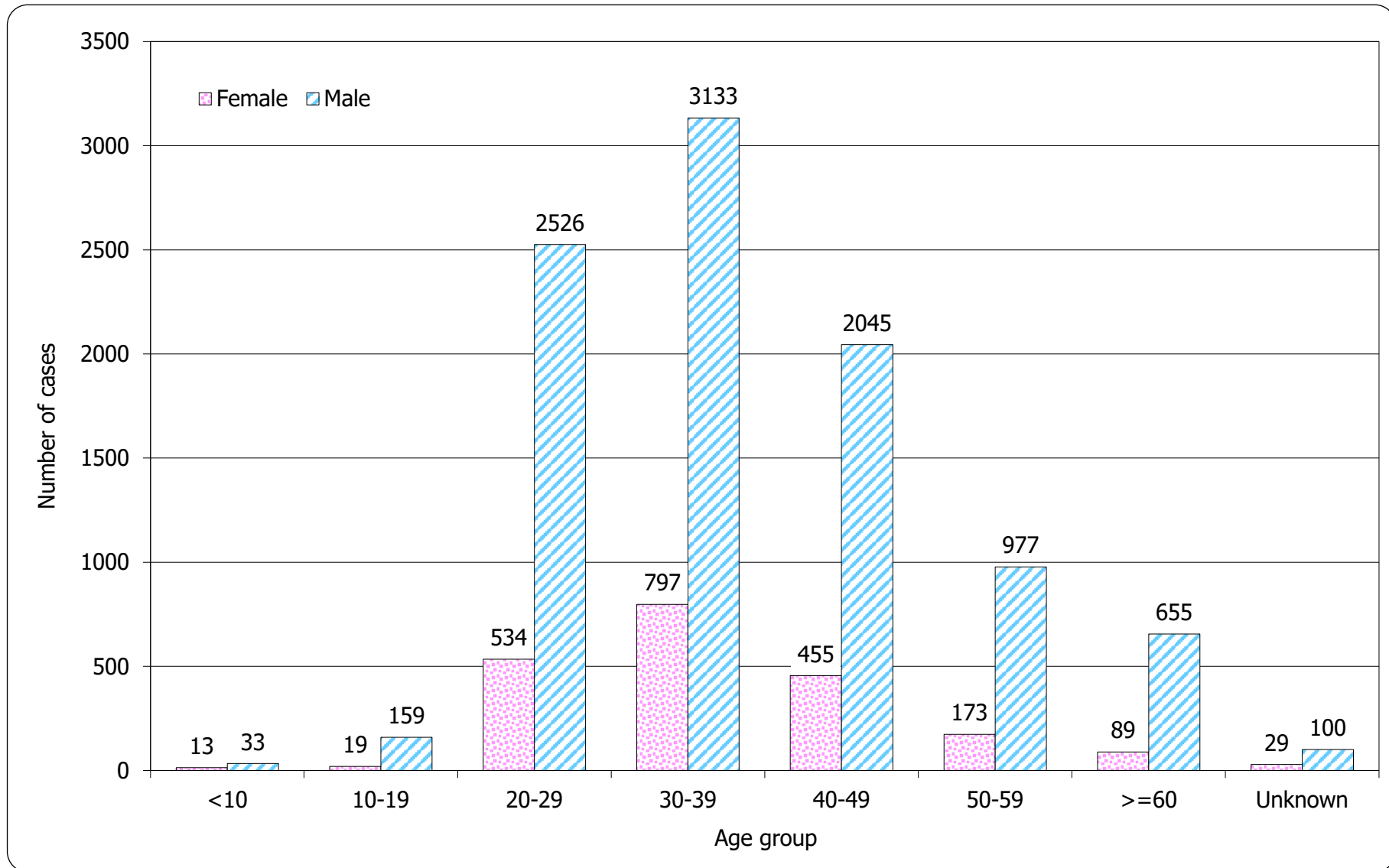


Table 4.2 Age distribution of reported AIDS

	This quarter (Jan - Mar 2023)	Last quarter (Oct - Dec 2022)	Same quarter last year (Jan - Mar 2022)	Cumulative (1984 – Mar 2023)
Adult	35	9	18	2,403
Child (age 13 or less)	0	0	0	14
Total	35	9	18	2,417

Chart 4.3 Age distribution of reported AIDS

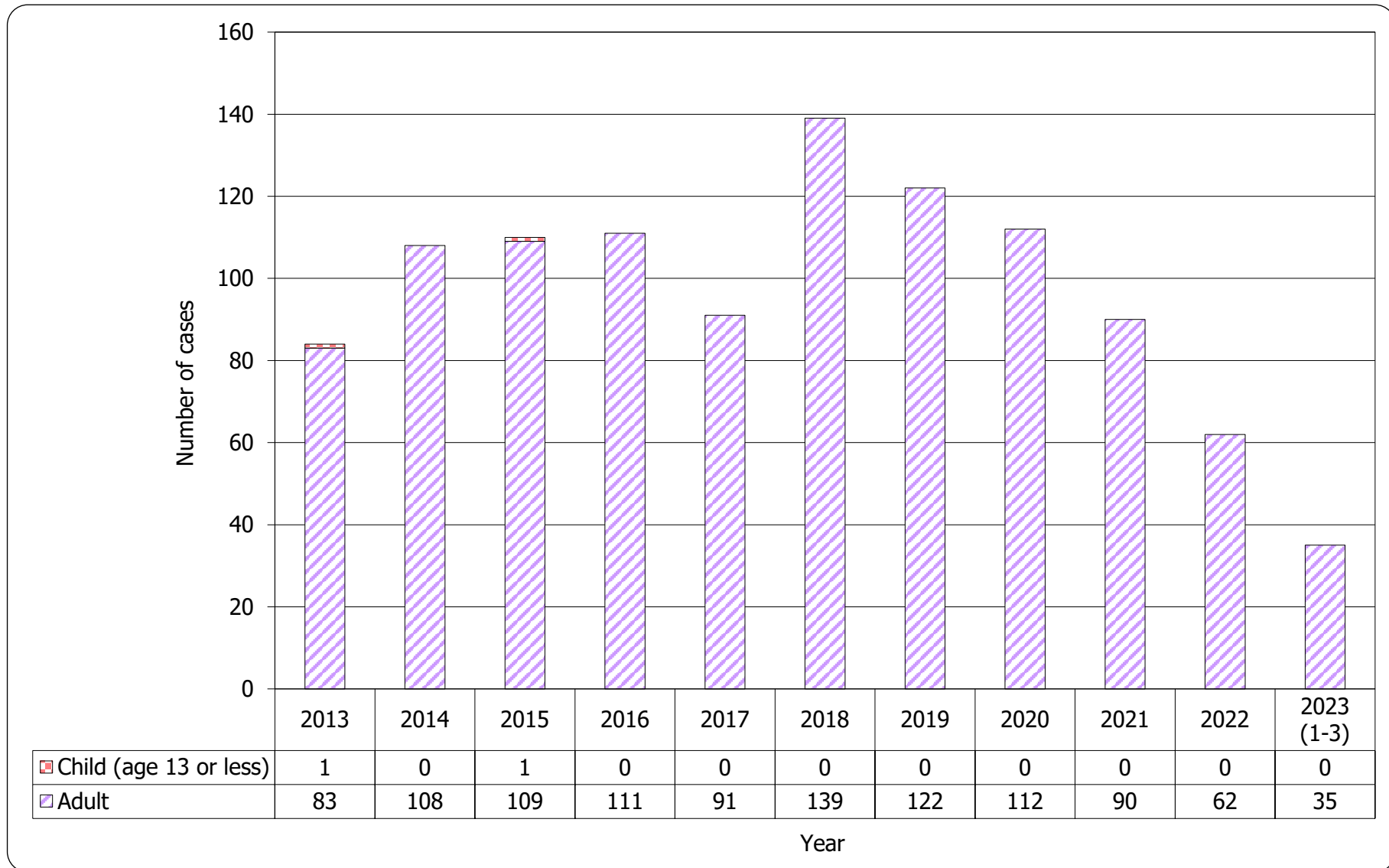
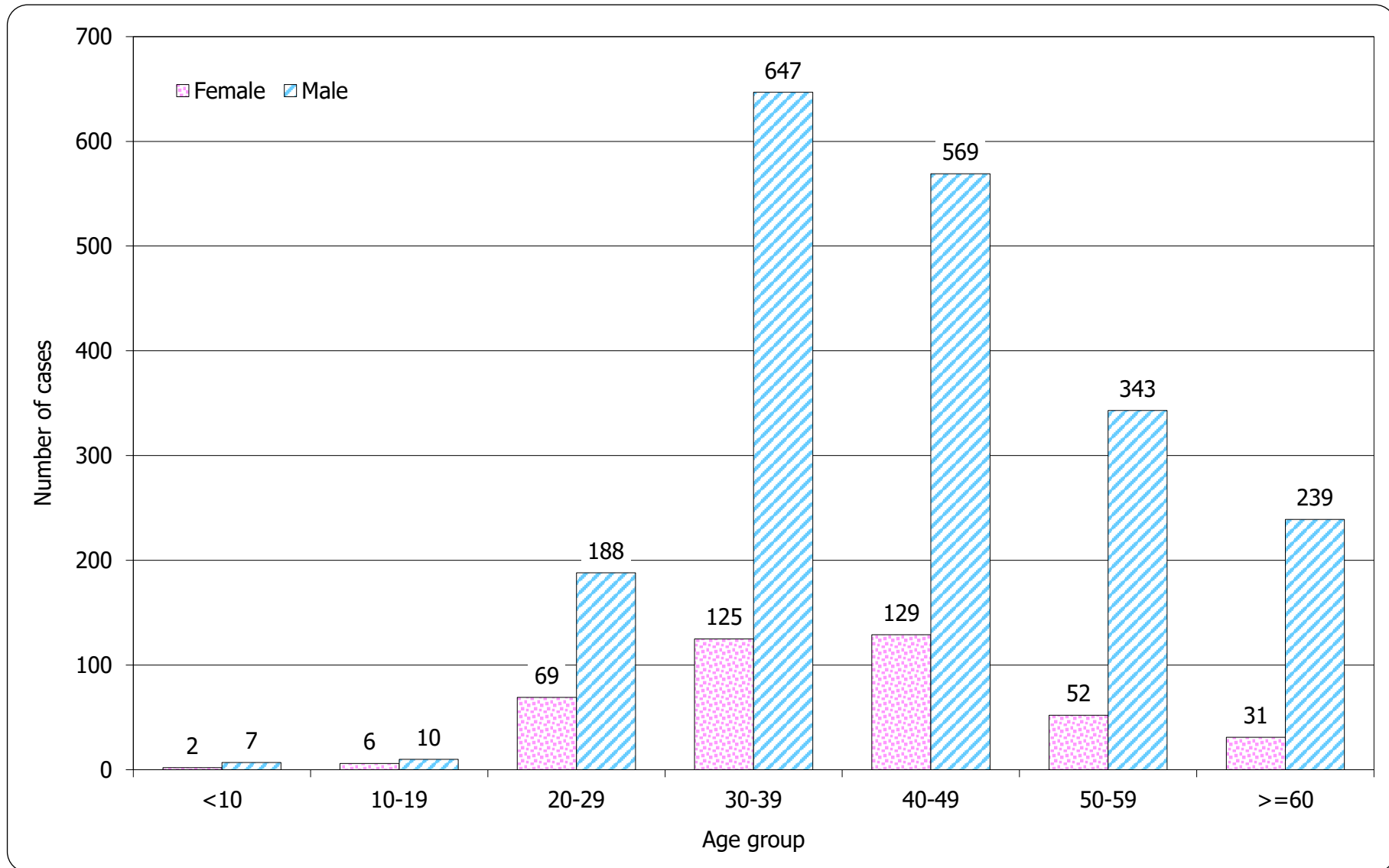


Chart 4.4 Age group & gender of total reported AIDS

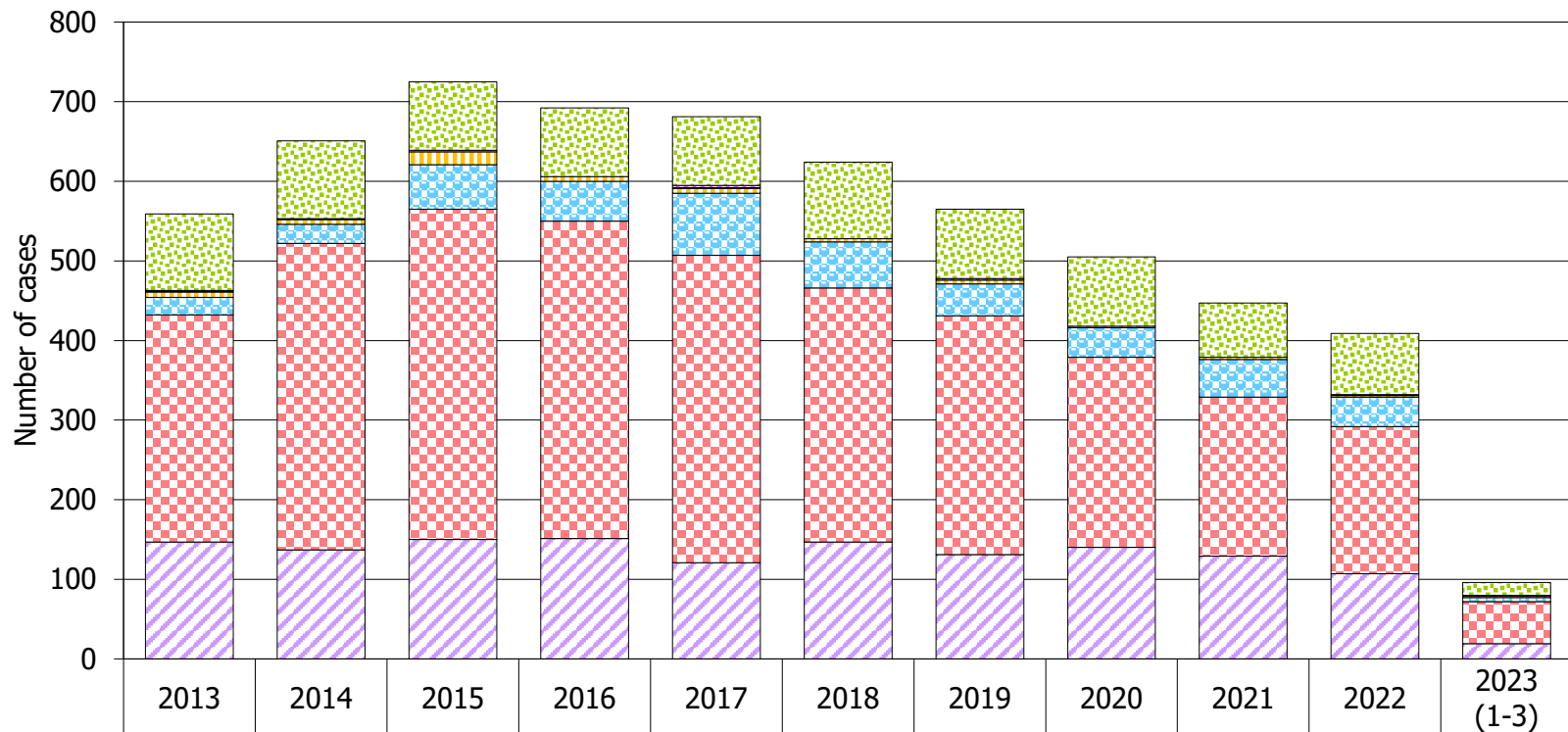


5. Exposure categories of reported HIV/AIDS

Table 5.1 Exposure categories of reported HIV

	This quarter (Jan - Mar 2023)	Last quarter (Oct - Dec 2022)	Same quarter last year (Jan - Mar 2022)	Cumulative (1984 – Mar 2023)
Heterosexual	19	33	14	3,765
Homosexual	53	44	43	4,910
Bisexual	5	9	10	692
Injecting drug use	2	0	0	377
Blood / blood product infusion	1	0	0	87
Perinatal	0	0	0	35
Undetermined	16	16	18	1,871
Total	96	102	85	11,737

Chart 5.1 Exposure categories of reported HIV



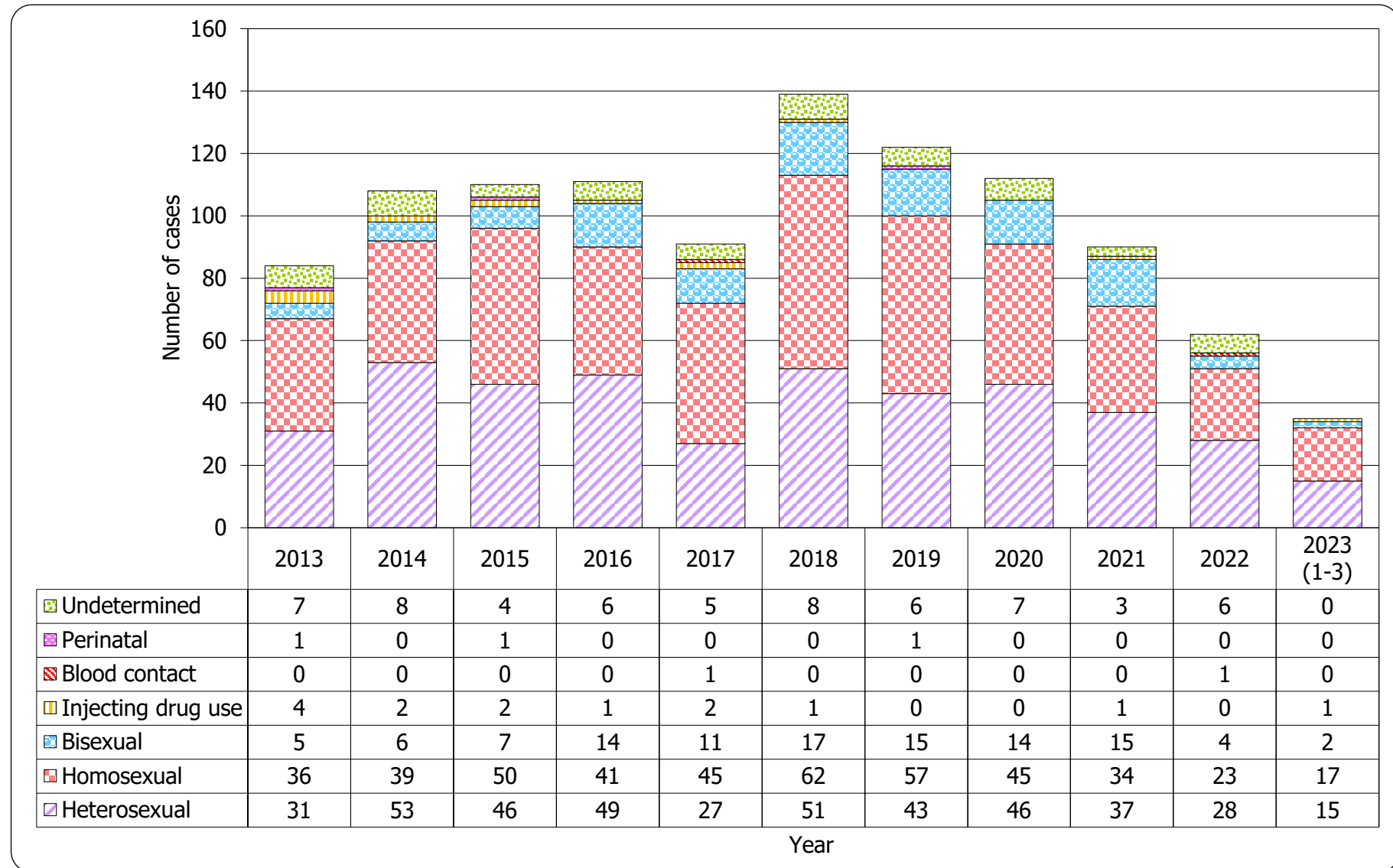
	2013	2014	2015	2016	2017	2018	2019	2020	2021	2022	2023 (1-3)
Undetermined	96	98	86	86	86	96	87	87	68	77	16
Perinatal	1	0	2	0	3	0	2	0	0	0	0
Blood contact	1	1	0	0	1	0	0	0	0	1	1
Injecting drug use	7	6	16	6	6	4	5	2	3	2	2
Bisexual	22	24	56	50	78	58	40	37	47	37	5
Homosexual	285	385	415	399	386	319	300	239	200	185	53
Heterosexual	147	137	150	151	121	147	131	140	129	107	19

Year

Table 5.2 Exposure categories of reported AIDS

	This quarter (Jan - Mar 2023)	Last quarter (Oct - Dec 2022)	Same quarter last year (Jan - Mar 2022)	Cumulative (1984 – Mar 2023)
Heterosexual	15	4	7	1,217
Homosexual	17	4	6	769
Bisexual	2	0	3	166
Injecting drug use	1	0	0	69
Blood / blood product infusion	0	0	0	26
Perinatal	0	0	0	11
Undetermined	0	1	2	159
Total	35	9	18	2,417

Chart 5.2 Exposure categories of reported AIDS



6. Ratio (heterosexual : homosexual / bisexual) of sexually acquired HIV infection in men

Table 6.1 Ratio of sexually acquired infection in men with reported HIV/AIDS (heterosexual : homo / bisexual) by quarter

	This quarter (Jan - Mar 2023)	Last quarter (Oct - Dec 2022)	Same quarter last year (Jan - Mar 2022)	Cumulative (1984 – Mar 2023)
HIV	0.2 : 1	0.4 : 1	0.1 : 1	0.4 : 1
AIDS	0.6 : 1	0.8 : 1	0.3 : 1	0.9 : 1

Table 6.2 Ratio of sexually acquired infection in men with reported HIV/AIDS (heterosexual : homo / bisexual) by year

	2013	2014	2015	2016	2017	2018	2019	2020	2021	2022	2023 (1-3)	1984 – Mar 2023
HIV	0.2 : 1	0.2 : 1	0.2 : 1	0.2 : 1	0.1 : 1	0.2 : 1	0.2 : 1	0.3 : 1	0.3 : 1	0.3 : 1	0.2 : 1	0.4 : 1
AIDS	0.4 : 1	0.7 : 1	0.5 : 1	0.5 : 1	0.3 : 1	0.3 : 1	0.4 : 1	0.4 : 1	0.5 : 1	0.6 : 1	0.6 : 1	0.9 : 1

7. Injecting drug users in reported HIV/AIDS

Table 7.1 Injecting drug users in reported HIV/AIDS

	This quarter (Jan - Mar 2023)	Last quarter (Oct - Dec 2022)	Same quarter last year (Jan - Mar 2022)	Cumulative (1984 – Mar 2023)
HIV (% of reported HIV)	2 2.1%	0 0.0%	0 0.0%	377 3.2%
AIDS (% of reported AIDS)	1 2.9%	0 0.0%	0 0.0%	69 2.9%

Table 7.2 Number of injecting drug user in reported HIV/AIDS by year

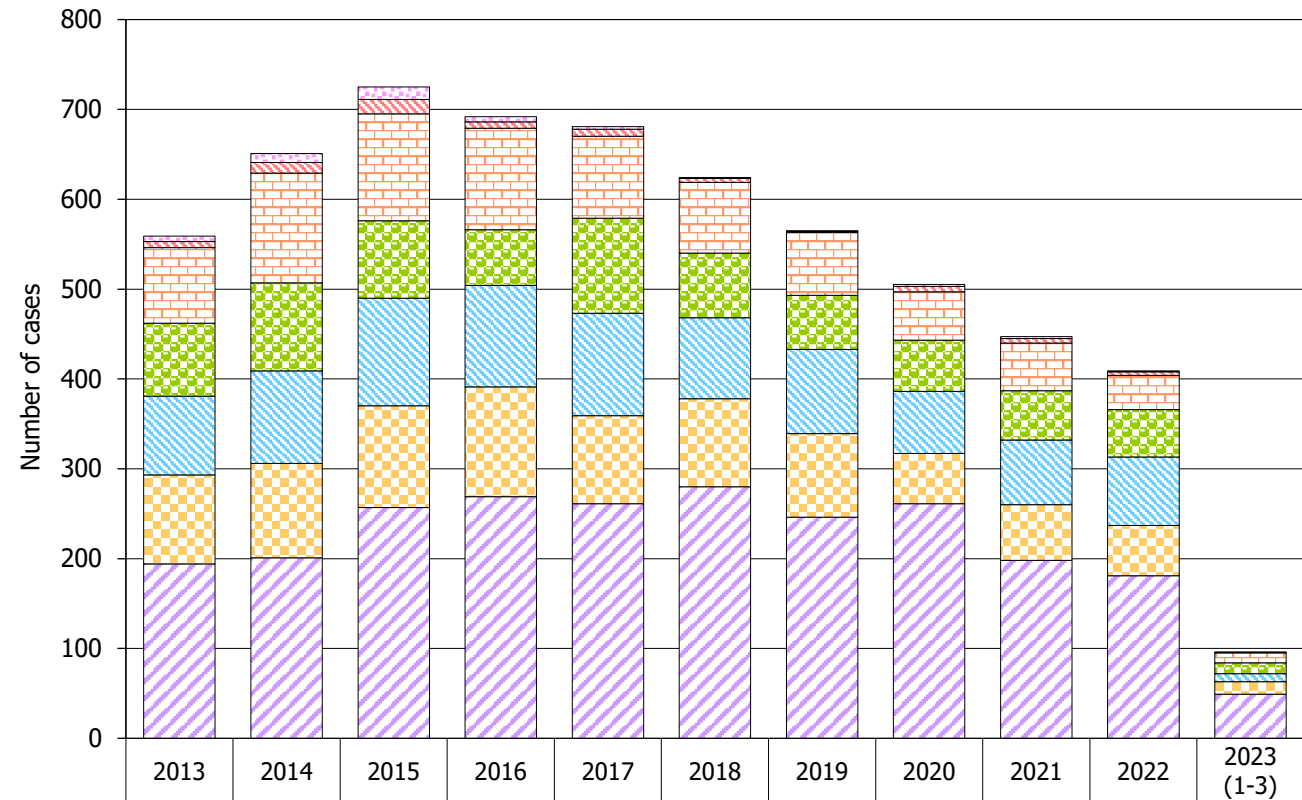
	2013	2014	2015	2016	2017	2018	2019	2020	2021	2022	2023 (1-3)	1984 – Mar 2023
HIV (% of reported HIV)	7 (1.3%)	6 (0.9%)	16 (2.2%)	6 (0.9%)	6 (0.9%)	4 (0.6%)	5 (0.9%)	2 (0.4%)	3 (0.7%)	2 (0.5%)	2 (2.1%)	377 (3.2%)
AIDS (% of reported AIDS)	4 (4.8%)	2 (1.9%)	2 (1.8%)	1 (0.9%)	2 (2.2%)	1 (0.7%)	0 (0.0%)	0 (0.0%)	1 (1.1%)	0 (0.0%)	1 (2.9%)	69 (2.9%)

8. Source of referral of reported HIV/AIDS

Table 8.1 Source of referral of reported HIV

	This quarter (Jan - Mar 2023)	Last quarter (Oct - Dec 2022)	Same quarter last year (Jan - Mar 2022)	Cumulative (1984 – Mar 2023)
Public hospitals / clinics / laboratories	49	50	38	4,869
Private hospitals / clinics / laboratories	14	7	19	2,218
Social Hygiene Clinics	9	15	14	1,709
DH AIDS Unit	12	13	12	1,482
AIDS service organisations (NGOs)	11	16	1	1,142
Hong Kong Red Cross Blood Transfusion Service	1	1	1	181
Drug rehabilitation services	0	0	0	136
Total	96	102	85	11,737

Chart 8.1 Source of referral of reported HIV



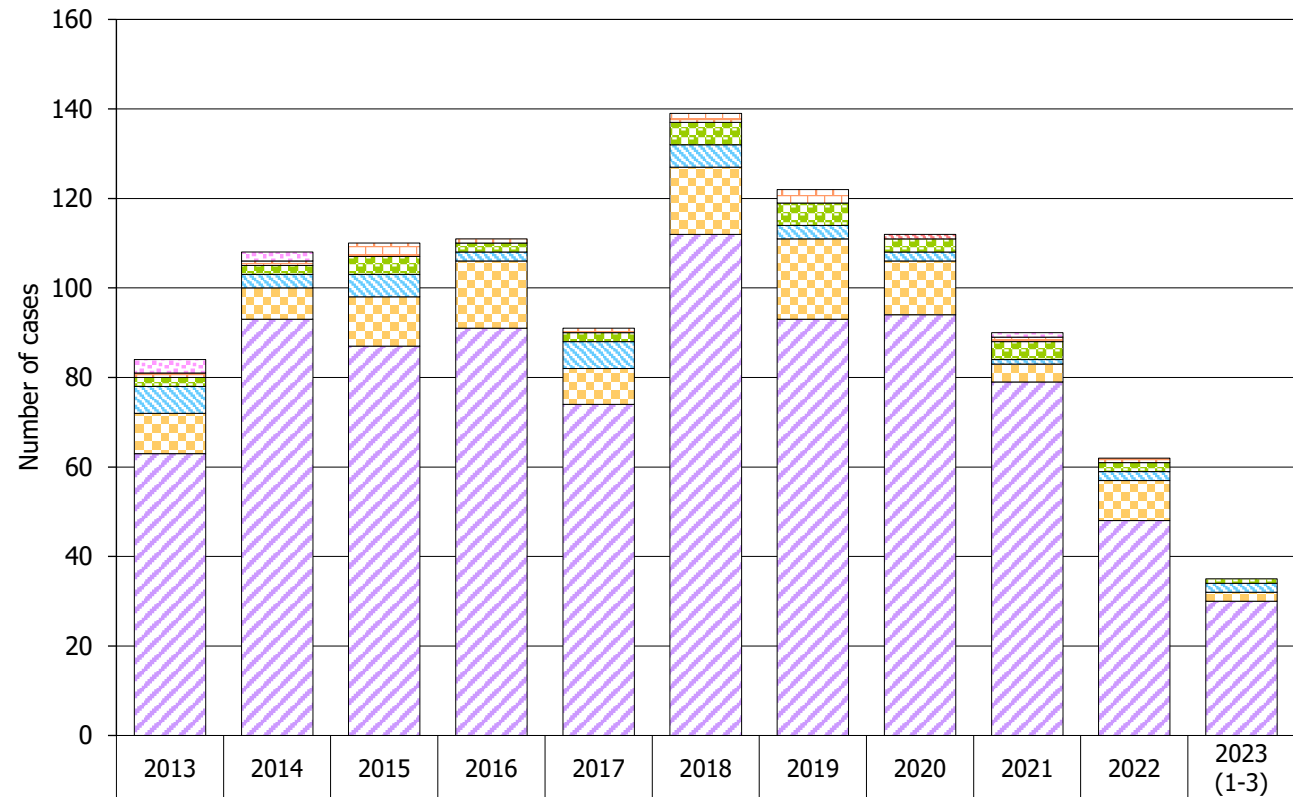
	2013	2014	2015	2016	2017	2018	2019	2020	2021	2022	2023 (1-3)
Drug rehabilitation services	6	10	14	6	3	1	1	2	2	1	0
Hong Kong Red Cross Blood Transfusion Service	7	12	16	7	8	4	1	6	5	4	1
AIDS service organisations (NGOs)	84	122	119	113	91	79	70	54	53	38	11
DH AIDS Unit	81	98	86	62	106	72	60	57	55	53	12
Social Hygiene Clinics	88	103	120	113	114	90	94	69	72	76	9
Private hospitals / clinics / laboratories	99	105	113	122	98	98	93	56	62	56	14
Public hospitals / clinics / laboratories	194	201	257	269	261	280	246	261	198	181	49

Year

Table 8.2 Source of referral of reported AIDS

	This quarter (Jan - Mar 2023)	Last quarter (Oct - Dec 2022)	Same quarter last year (Jan - Mar 2022)	Cumulative (1984 – Mar 2023)
Public hospitals / clinics / laboratories	30	9	16	1,874
Private hospitals / clinics / laboratories	2	0	2	302
Social Hygiene Clinics	2	0	0	83
DH AIDS Unit	1	0	0	121
AIDS service organisations (NGOs)	0	0	0	20
Hong Kong Red Cross Blood Transfusion Service	0	0	0	10
Drug rehabilitation services	0	0	0	7
Total	35	9	18	2,417

Chart 8.2 Source of referral of Reported AIDS



	2013	2014	2015	2016	2017	2018	2019	2020	2021	2022	2023 (1-3)
Drug rehabilitation services	3	2	0	0	0	0	0	0	1	0	0
Hong Kong Red Cross Blood Transfusion Service	0	0	0	0	0	0	0	1	0	0	0
AIDS service organisations (NGOs)	1	1	3	1	1	2	3	0	1	1	0
DH AIDS Unit	2	2	4	2	2	5	5	3	4	2	1
Social Hygiene Clinics	6	3	5	2	6	5	3	2	1	2	2
Private hospitals / clinics / laboratories	9	7	11	15	8	15	18	12	4	9	2
Public hospitals / clinics / laboratories	63	93	87	91	74	112	93	94	79	48	30

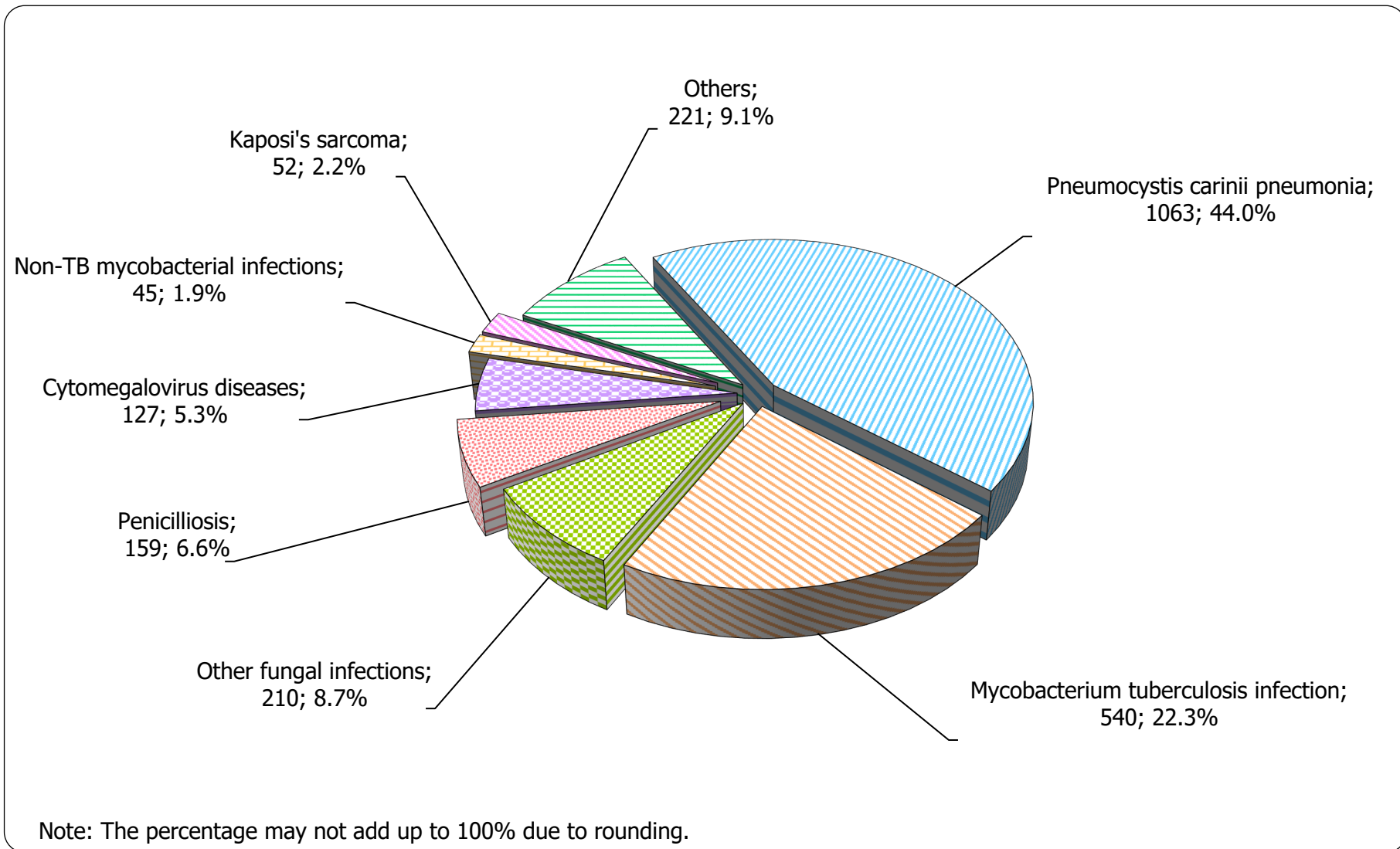
Year

9. Distribution of AIDS defining illnesses

Table 9.1 Distribution of AIDS defining illness of reported AIDS

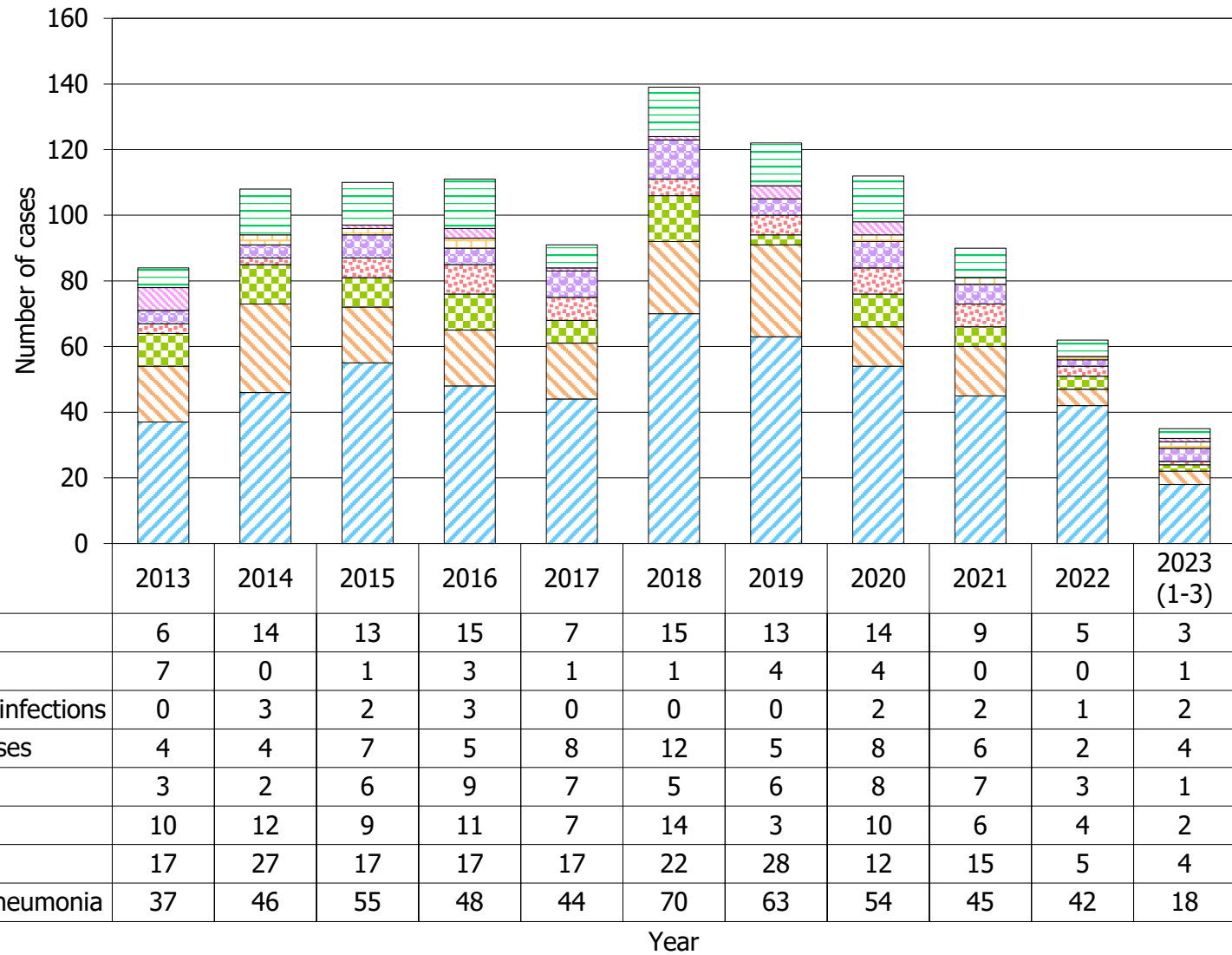
	This quarter (Jan - Mar 2023)	Last quarter (Oct - Dec 2022)	Same quarter last year (Jan - Mar 2022)	Cumulative (1984 – Mar 2023)
<i>Pneumocystis carinii pneumonia</i>	18	6	14	1,063
<i>Mycobacterium tuberculosis</i>	4	1	0	540
Other fungal infections	2	0	2	210
Penicilliosis	1	0	0	159
Cytomegalovirus diseases	4	0	1	127
Non-TB mycobacterial infections	2	0	0	45
Kaposi's sarcoma	1	0	0	52
Others	3	2	1	221
Total	35	9	18	2,417

Chart 9.1 AIDS defining illness of total reported AIDS



Format: [ADI; Number; %]

Chart 9.2 AIDS defining illness of reported AIDS by year



10. Reported sexually transmitted infections (STIs) diagnosed in Social Hygiene Service

Table 10.1 Summary table on the reported STIs diagnosed in Social Hygiene Service

	This quarter (Jan - Mar 2023)	Last quarter (Oct - Dec 2022)	Same quarter last year (Jan - Mar 2022)	In year 2022
Syphilis				
<i>Primary</i>	13	22	13	71
<i>Secondary</i>	55	56	39	197
<i>Early latent</i>	67	49	49	212
<i>Late latent</i>	106	117	79	428
<i>Late (cardiovascular / neuro / ocular)</i>	5	0	0	5
<i>Congenital (early)</i>	0	0	0	0
<i>Congenital (late)</i>	0	0	0	0
Syphilis total	246	244	180	913

(to be cont'd)

Table 10.1 (cont'd)

	This quarter (Jan - Mar 2023)	Last quarter (Oct - Dec 2022)	Same quarter last year (Jan - Mar 2022)	In year 2022
Gonorrhoea	422	354	341	1,482
Non-gonococcal urethritis (Male)	327	359	610	2,279
Non-specific genital infection (Female)	353	363	379	1,580
Genital wart	277	266	223	1,111
Herpes genitalis	118	126	92	453
Pediculosis pubis	29	28	20	80
Trichomonas	42	57	38	192
Genital ulcer	8	2	0	3
Chancroid / Lymphogranuloma venereum	0	0	0	0
Others	62	89	143	533
Total	1,884	1,888	2,026	8,626

11. Gender distribution of reported STIs

Table 11.1 Gender distribution of selected STI reported by Social Hygiene Service

	This quarter (Jan - Mar 2023)	Last quarter (Oct - Dec 2022)	Same quarter last year (Jan - Mar 2022)	In year 2022
Primary Syphilis				
Male (M)	13	21	13	69
Female (F)	0	1	0	2
M : F	N.A.	21.0 : 1	N.A.	34.5 : 1
Gonorrhoea				
Male (M)	378	305	297	1297
Female (F)	44	49	44	185
M : F	8.6 : 1	6.2 : 1	6.8 : 1	7.0 : 1
NGU / NSGI *				
Male (M)	327	359	610	2279
Female (F)	353	363	379	1580
M : F	0.9 : 1	1.0 : 1	1.6 : 1	1.4 : 1

(to be cont'd)

Table 11.1 (cont'd)

	This quarter (Jan - Mar 2023)	Last quarter (Oct - Dec 2022)	Same quarter last year (Jan - Mar 2022)	In year 2022
Genital wart				
Male (M)	218	206	165	863
Female (F)	59	60	58	248
M : F	3.7 : 1	3.4 : 1	2.8 : 1	3.5 : 1
<i>Herpes genitalis</i>				
Male (M)	80	77	63	269
Female (F)	38	49	29	184
M : F	2.1 : 1	1.6 : 1	2.2 : 1	1.5 : 1

* NGU = Non-gonococcal urethritis

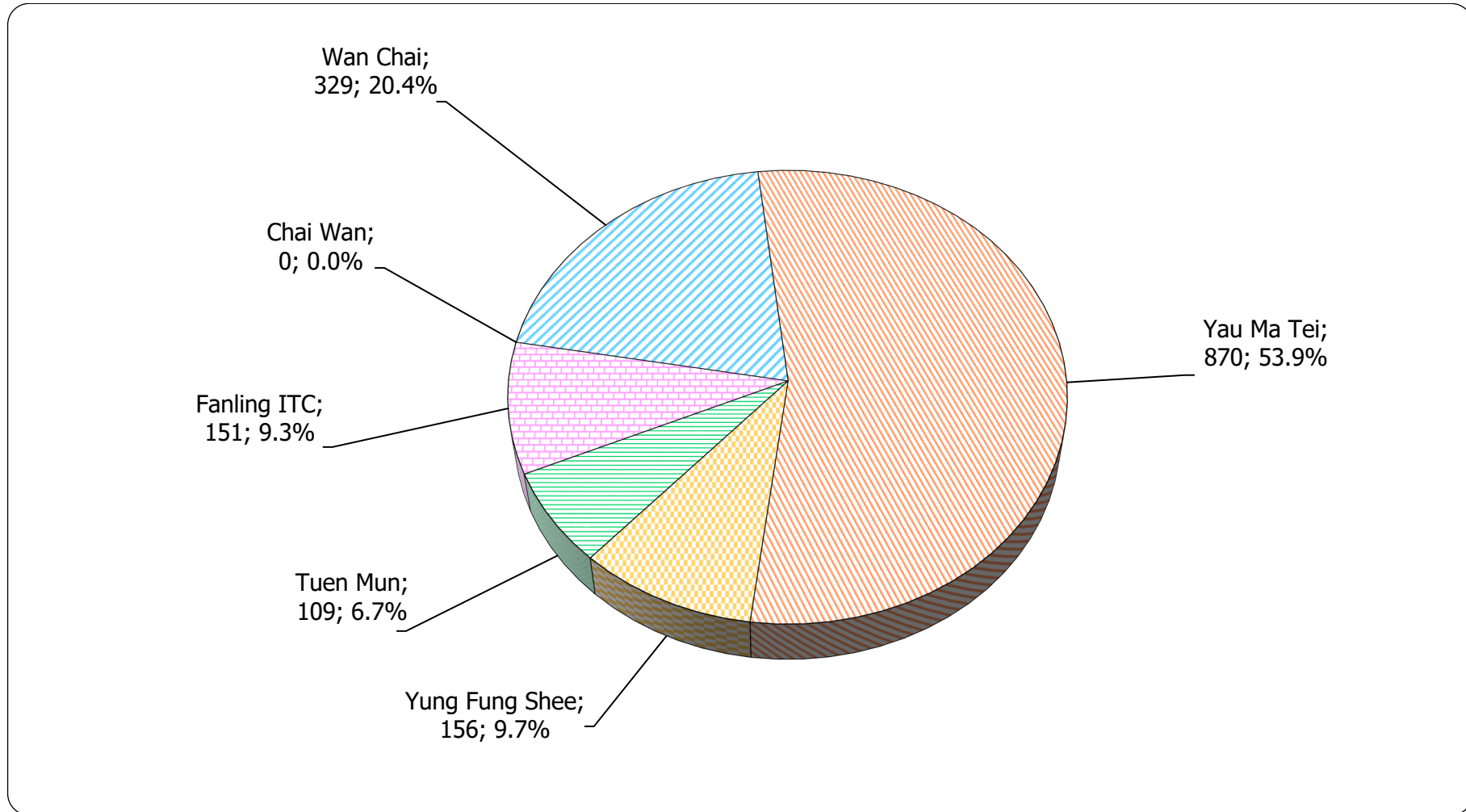
NSGI = Non-specific genital infection

Table 11.2 Gender distribution of reported STI by clinic

	This quarter (Jan - Mar 2023)		Last quarter (Oct - Dec 2022)		Same quarter last year (Jan - Mar 2022)		In year 2022	
	Male	Female	Male	Female	Male	Female	Male	Female
Chai Wan	0	0	0	0	0	0	0	0
Wan Chai	329	318	327	381	253	335	1,203	1,544
Yau Ma Tei	870	103	769	0	712	29	3,232	29
Yung Fung Shee	156	101	163	144	138	117	667	528
Tuen Mun	109	90	135	112	110	102	485	438
Fanling ITC	151	89	148	123	128	102	546	508
Total	1,615	701	1,542	760	1,341	685	6,133	3,047

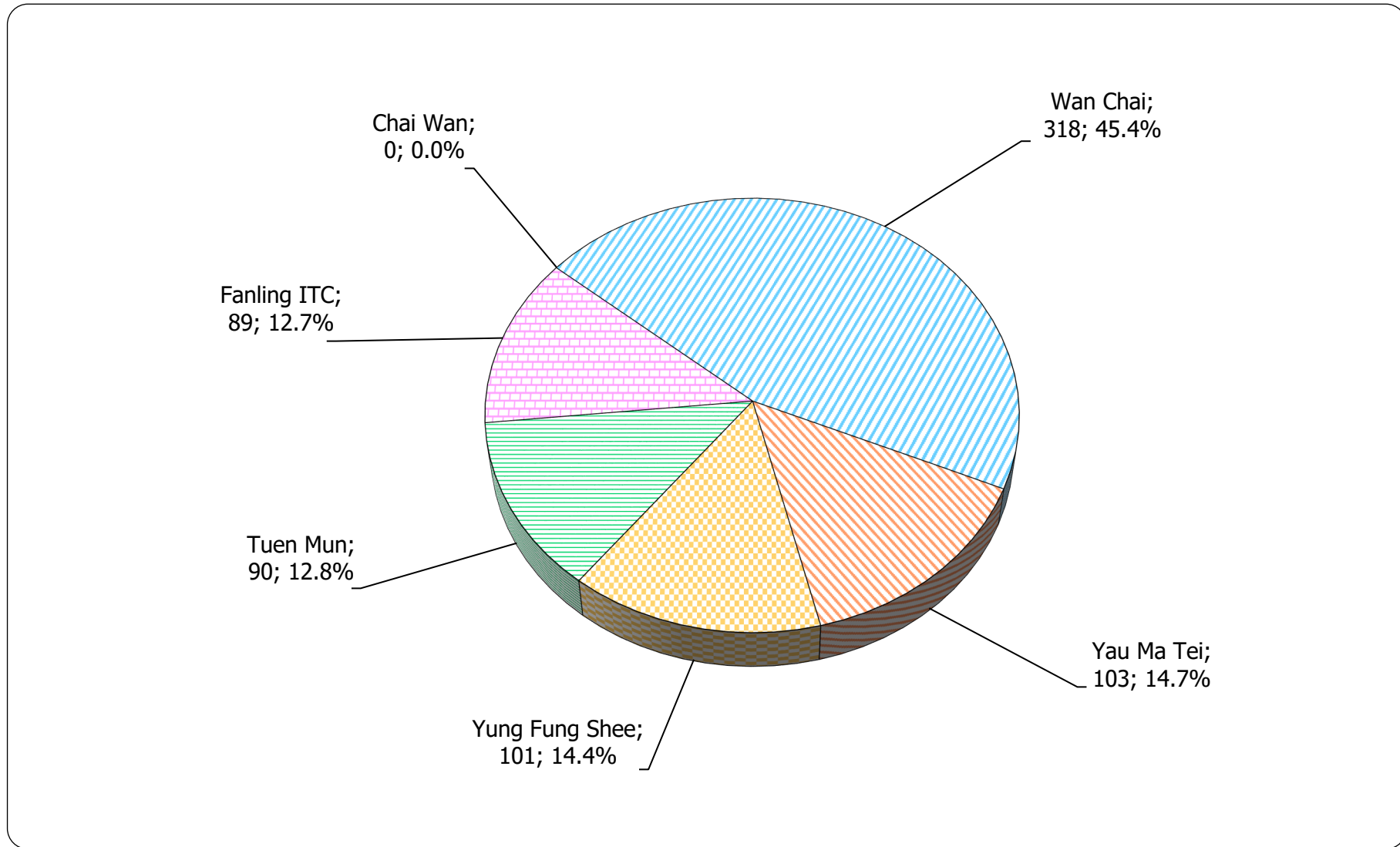
12. Clinic distribution

Chart 12.1 Number of newly report STI in Q1 2023 by clinic (male clients)



Format: [Clinic; Number; %]

Chart 12.2 Number of newly report STI in Q1 2023 by clinic (female clients)



Format: [Clinic; Number; %]