



The Hong Kong STD/AIDS update is a composite report on HIV/AIDS reporting and STI caseload statistics published three monthly. The current issue has the updated information up to June 2023.

**SPP Surveillance Team:**

*Dr. Annie LO*

*Ms. Shirry WAN*

**Correspondence to:**

*Special Preventive Programme,*

*Centre for Health Protection, Department of Health*

*c/o Red Ribbon Centre, 2/F Wang Tau Hom Jockey Club Clinic,*

*200 Junction Road East, Kowloon, Hong Kong*

*Telephone: (852) 3143 7200 Facsimile: (852) 2338 0534*

*E-mail: [aids@dh.gov.hk](mailto:aids@dh.gov.hk)*

## List of Tables / Figures

<b>1. NUMBER OF HIV/AIDS REPORTED</b>	<b>49</b>
TABLE 1.1 SUMMARY TABLE ON THE REPORTED NUMBER OF HIV/AIDS	49
CHART 1.1 NUMBER OF HIV/AIDS REPORTED	52
<b>2. GENDER DISTRIBUTION OF REPORTED HIV/AIDS</b>	<b>53</b>
TABLE 2.1 GENDER DISTRIBUTION OF REPORTED HIV	53
CHART 2.1 GENDER DISTRIBUTION OF REPORTED HIV BY QUARTER	54
CHART 2.2 GENDER DISTRIBUTION OF REPORTED HIV BY YEAR	55
TABLE 2.2 GENDER DISTRIBUTION OF REPORTED AIDS	56
CHART 2.3 GENDER DISTRIBUTION OF REPORTED AIDS BY QUARTER	57
CHART 2.4 GENDER DISTRIBUTION OF REPORTED AIDS BY YEAR	58
<b>3. ETHNICITY OF REPORTED HIV/AIDS</b>	<b>59</b>
TABLE 3.1 DISTRIBUTION OF ETHNICITY OF REPORTED HIV	59
CHART 3.1 DISTRIBUTION OF ETHNICITY OF REPORTED HIV	60
TABLE 3.2 DISTRIBUTION OF ETHNICITY OF REPORTED AIDS	61
CHART 3.2 DISTRIBUTION OF ETHNICITY OF REPORTED AIDS	62
<b>4. AGE DISTRIBUTION OF REPORTED HIV/AIDS</b>	<b>63</b>
TABLE 4.1 AGE DISTRIBUTION OF REPORTED HIV	63
CHART 4.1 AGE DISTRIBUTION OF REPORTED HIV	64
CHART 4.2 AGE GROUP & GENDER OF TOTAL REPORTED HIV	65
TABLE 4.2 AGE DISTRIBUTION OF REPORTED AIDS	66
CHART 4.3 AGE DISTRIBUTION OF REPORTED AIDS	67
CHART 4.4 AGE GROUP & GENDER OF TOTAL REPORTED AIDS	68
<b>5. EXPOSURE CATEGORIES OF REPORTED HIV/AIDS</b>	<b>69</b>
TABLE 5.1 EXPOSURE CATEGORIES OF REPORTED HIV	69
CHART 5.1 EXPOSURE CATEGORIES OF REPORTED HIV	70
TABLE 5.2 EXPOSURE CATEGORIES OF REPORTED AIDS	71
CHART 5.2 EXPOSURE CATEGORIES OF REPORTED AIDS	72

<b>6. RATIO (HETEROSEXUAL : HOMOSEXUAL / BISEXUAL) OF SEXUALLY ACQUIRED HIV INFECTION IN MEN</b>	<b>73</b>
TABLE 6.1 RATIO OF SEXUALLY ACQUIRED INFECTION IN MEN WITH REPORTED HIV/AIDS (HETEROSEXUAL : HOMO / BISEXUAL) BY QUARTER	73
TABLE 6.2 RATIO OF SEXUALLY ACQUIRED INFECTION IN MEN WITH REPORTED HIV/AIDS (HETEROSEXUAL : HOMO / BISEXUAL) BY YEAR	74
<b>7. INJECTING DRUG USERS IN REPORTED HIV/AIDS</b>	<b>75</b>
TABLE 7.1 INJECTING DRUG USERS IN REPORTED HIV/AIDS	75
TABLE 7.2 NUMBER OF INJECTING DRUG USER IN REPORTED HIV/AIDS BY YEAR	76
<b>8. SOURCE OF REFERRAL OF REPORTED HIV/AIDS</b>	<b>77</b>
TABLE 8.1 SOURCE OF REFERRAL OF REPORTED HIV	77
CHART 8.1 SOURCE OF REFERRAL OF REPORTED HIV	78
TABLE 8.2 SOURCE OF REFERRAL OF REPORTED AIDS	79
CHART 8.2 SOURCE OF REFERRAL OF REPORTED AIDS	80
<b>9. DISTRIBUTION OF AIDS DEFINING ILLNESSES</b>	<b>81</b>
TABLE 9.1 DISTRIBUTION OF AIDS DEFINING ILLNESS OF REPORTED AIDS	81
CHART 9.1 AIDS DEFINING ILLNESS OF TOTAL REPORTED AIDS	82
CHART 9.2 AIDS DEFINING ILLNESS OF REPORTED AIDS BY YEAR	83
<b>10. REPORTED SEXUALLY TRANSMITTED INFECTIONS (STIS) DIAGNOSED IN SOCIAL HYGIENE SERVICE</b>	<b>84</b>
TABLE 10.1 SUMMARY TABLE ON THE REPORTED STIS DIAGNOSED IN SOCIAL HYGIENE SERVICE	84
<b>11. GENDER DISTRIBUTION OF REPORTED STIS</b>	<b>85</b>
TABLE 11.1 GENDER DISTRIBUTION OF SELECTED STI REPORTED BY SOCIAL HYGIENE SERVICE	86
TABLE 11.2 GENDER DISTRIBUTION OF REPORTED STI BY CLINIC	88
<b>12. CLINIC DISTRIBUTION</b>	<b>88</b>
CHART 12.1 NUMBER OF NEWLY REPORT STI IN Q2 2023 BY CLINIC (MALE CLIENTS)	89
CHART 12.2 NUMBER OF NEWLY REPORT STI IN Q2 2023 BY CLINIC (FEMALE CLIENTS)	90

## 1. Number of HIV/AIDS reported

**Table 1.1 Summary table on the reported number of HIV/AIDS**

	This quarter (Apr - Jun 2023)		Last quarter (Jan - Mar 2023)		Same quarter last year (Apr - Jun 2022)		Cumulative (1984 – Jun 2023)	
	HIV	AIDS	HIV	AIDS	HIV	AIDS	HIV	AIDS
<b>Sex</b>								
Male	72	19	87	32	103	18	9,700	2,022
Female	21	5	9	3	22	5	2,130	419
<b>Ethnicity / race</b>								
Chinese	67	19	72	29	85	17	8,245	1,885
Non-Chinese	11	5	12	6	20	6	3,177	556
<i>Asian</i>	<i>9</i>	<i>4</i>	<i>7</i>	<i>4</i>	<i>15</i>	<i>5</i>	<i>1,651</i>	<i>395</i>
<i>White</i>	<i>0</i>	<i>0</i>	<i>2</i>	<i>2</i>	<i>4</i>	<i>1</i>	<i>661</i>	<i>106</i>
<i>Black</i>	<i>2</i>	<i>1</i>	<i>2</i>	<i>0</i>	<i>1</i>	<i>0</i>	<i>278</i>	<i>46</i>
<i>Others</i>	<i>0</i>	<i>0</i>	<i>1</i>	<i>0</i>	<i>0</i>	<i>0</i>	<i>587</i>	<i>9</i>
Unknown	15	0	12	0	20	0	408	0

(to be cont'd)

**Table 1.1 (cont'd)**

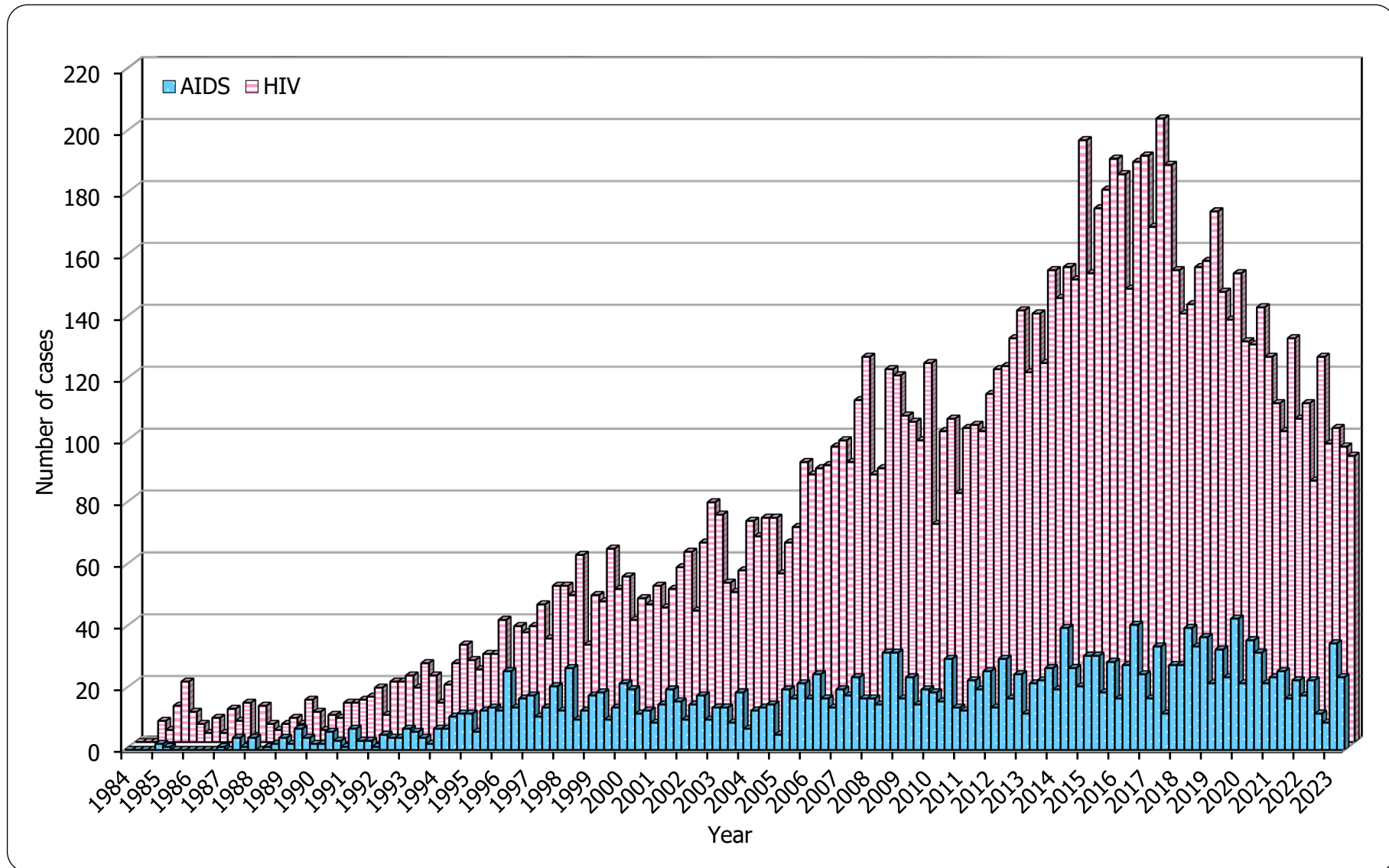
	This quarter (Apr - Jun 2023)		Last quarter (Jan - Mar 2023)		Same quarter last year (Apr - Jun 2022)		Cumulative (1984 – Jun 2023)	
	HIV	AIDS	HIV	AIDS	HIV	AIDS	HIV	AIDS
<b>Age at diagnosis</b>								
Adult	93	24	96	35	125	23	11,775	2,427
Child (age 13 or less)	0	0	0	0	0	0	55	14
<b>Exposure category</b>								
Heterosexual	31	11	21	15	32	10	3,798	1,228
Homosexual	29	9	55	17	57	9	4,942	778
Bisexual	10	2	5	2	11	1	703	168
Injecting drug use	3	1	2	1	0	0	380	70
Blood / blood product infusion	0	0	1	0	1	1	87	26
Perinatal	0	0	0	0	0	0	35	11
Undetermined	20	1	12	0	24	2	1,885	160

**(to be cont'd)**

**Table 1.1 (cont'd)**

	This quarter (Apr - Jun 2023)		Last quarter (Jan - Mar 2023)		Same quarter last year (Apr - Jun 2022)		Cumulative (1984 – Jun 2023)	
	HIV	AIDS	HIV	AIDS	HIV	AIDS	HIV	AIDS
<b>Source of referral</b>								
Public hospitals / clinics / laboratories	47	18	49	30	54	15	4,916	1,892
Private hospitals / clinics / laboratories	12	2	14	2	17	6	2,230	304
Social Hygiene Clinics	11	2	9	2	29	0	1,720	85
DH AIDS Unit	11	0	12	1	14	1	1,493	121
AIDS service organisations (NGOs)	10	1	11	0	10	1	1,152	21
Hong Kong Red Cross Blood Transfusion Service	1	1	1	0	1	0	182	11
Drug rehabilitation services	1	0	0	0	0	0	137	7
<b>Total</b>	<b>93</b>	<b>24</b>	<b>96</b>	<b>35</b>	<b>125</b>	<b>23</b>	<b>11,830</b>	<b>2,441</b>

**Chart 1.1 Number of HIV/AIDS reported**



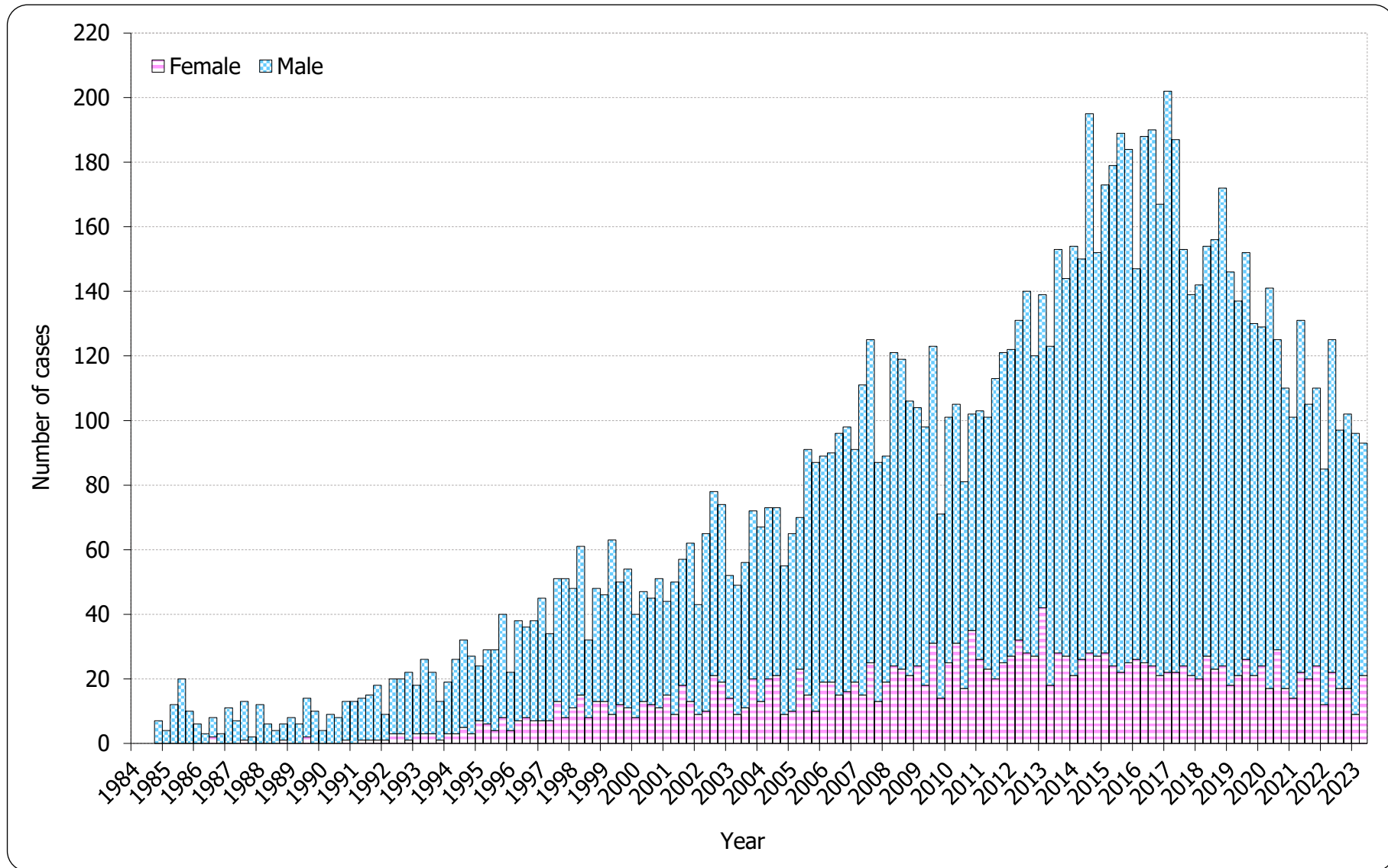
## 2. Gender distribution of reported HIV/AIDS

**Table 2.1 Gender distribution of reported HIV**

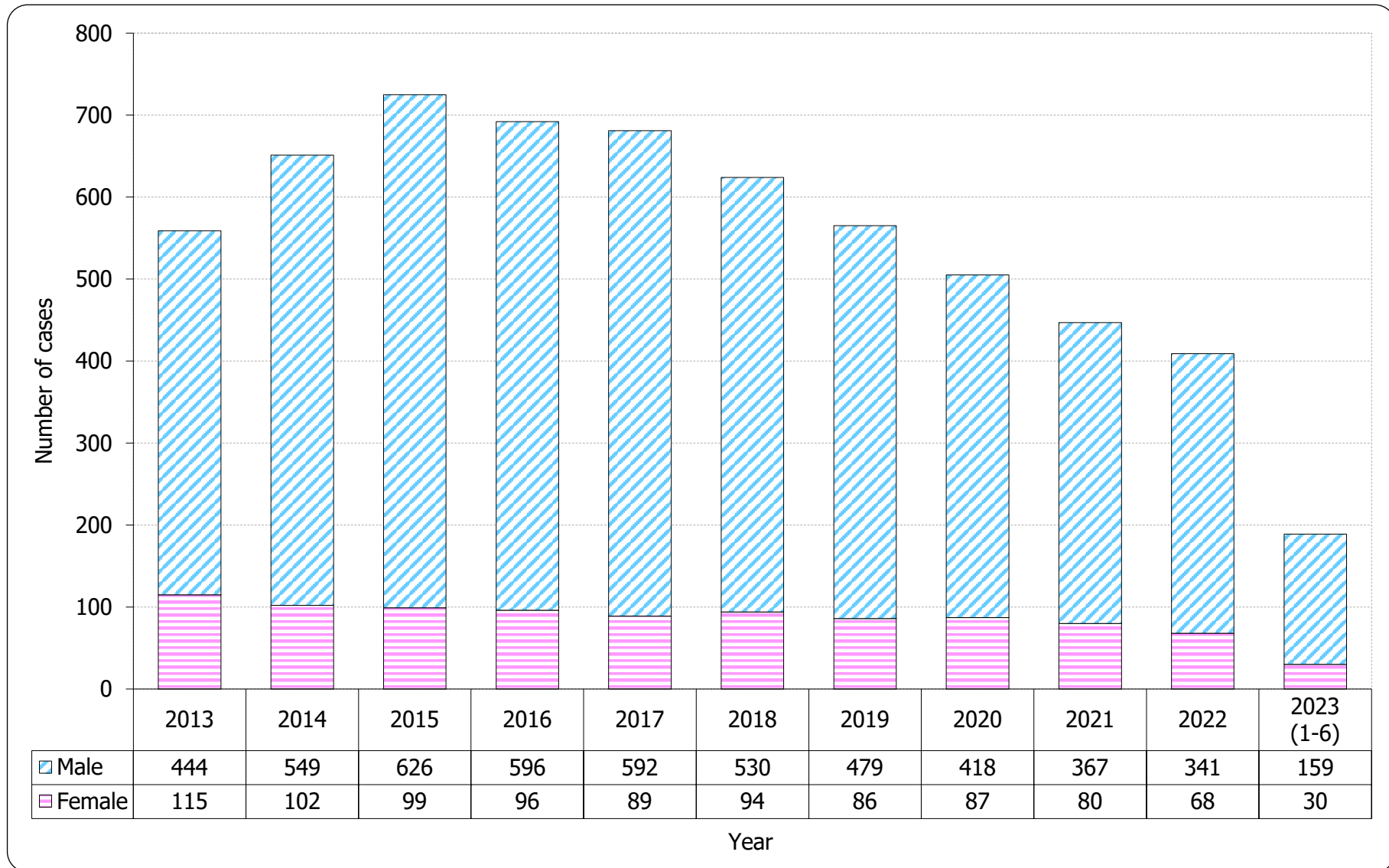
	This quarter (Apr - Jun 2023)	Last quarter (Jan - Mar 2023)	Same quarter last year (Apr - Jun 2022)	Cumulative (1984 – Jun 2023)
Male	72	87	103	9,700
Female	21	9	22	2,130
<b>Total</b>	<b>93</b>	<b>96</b>	<b>125</b>	<b>11,830</b>



**Chart 2.1 Gender distribution of reported HIV by quarter**



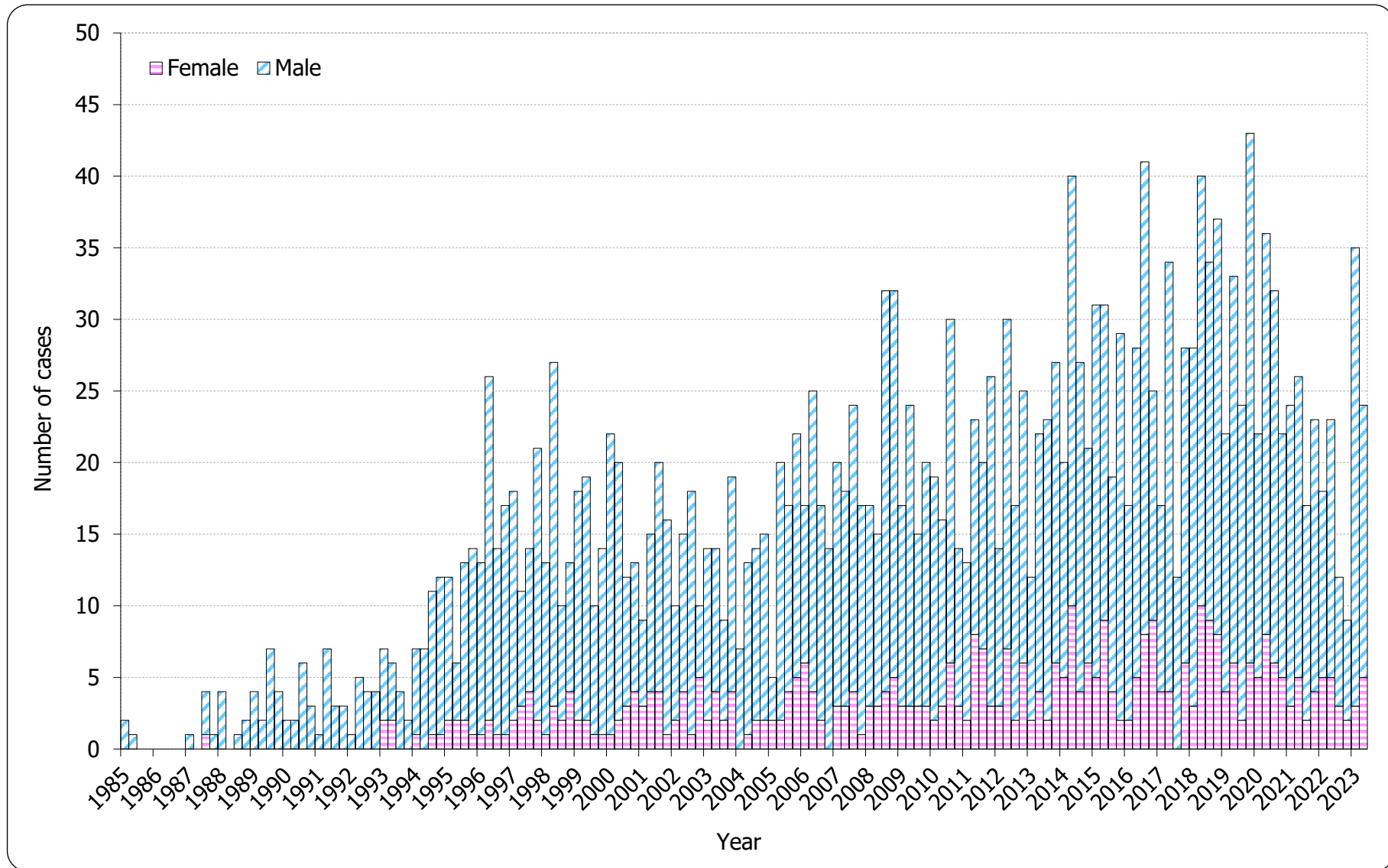
**Chart 2.2 Gender distribution of reported HIV by year**



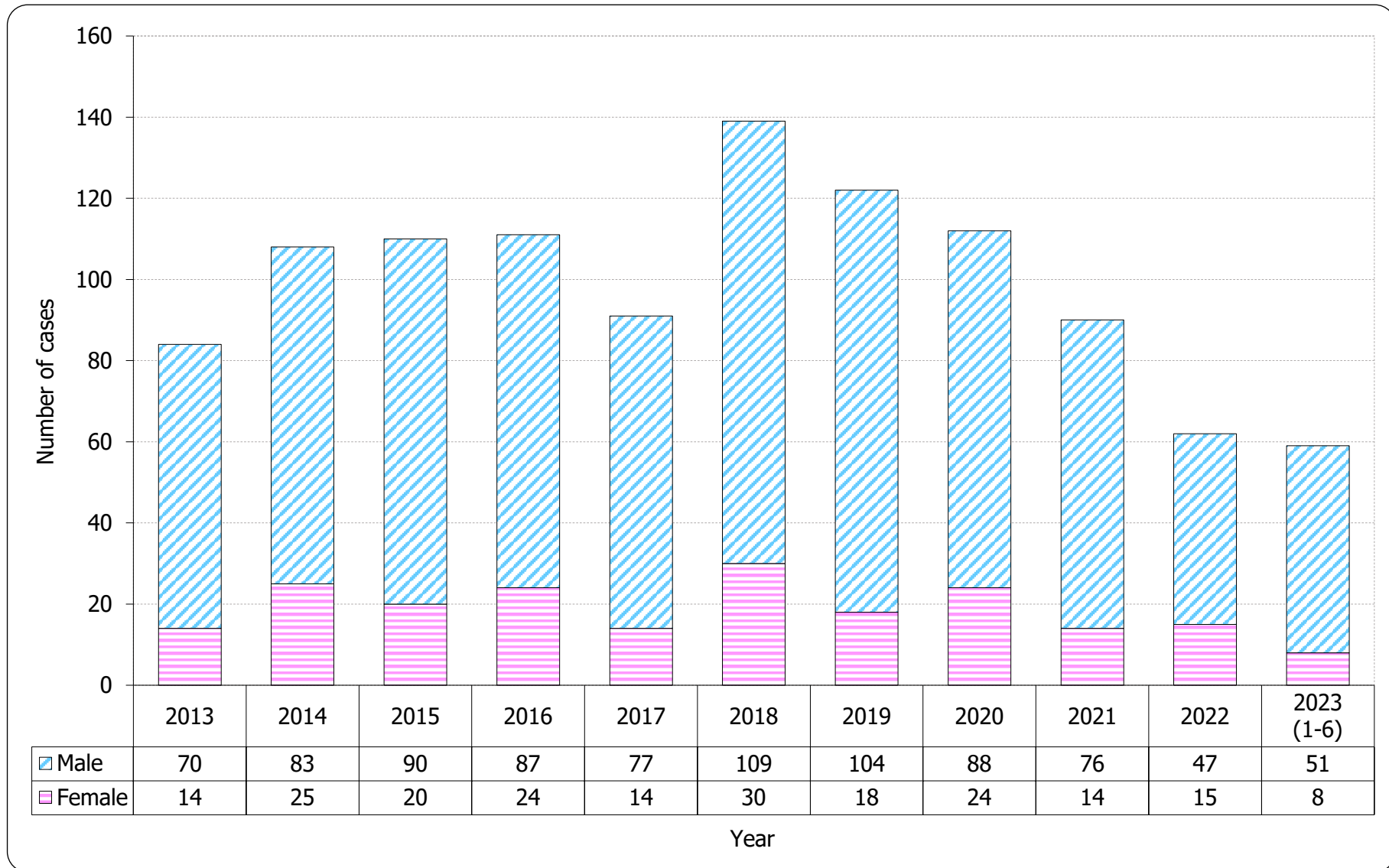
**Table 2.2 Gender distribution of reported AIDS**

	This quarter (Apr - Jun 2023)	Last quarter (Jan - Mar 2023)	Same quarter last year (Apr - Jun 2022)	Cumulative (1984 – Jun 2023)
Male	19	32	18	2,022
Female	5	3	5	419
<b>Total</b>	<b>24</b>	<b>35</b>	<b>23</b>	<b>2,441</b>

**Chart 2.3 Gender distribution of reported AIDS by quarter**



**Chart 2.4 Gender distribution of reported AIDS by year**

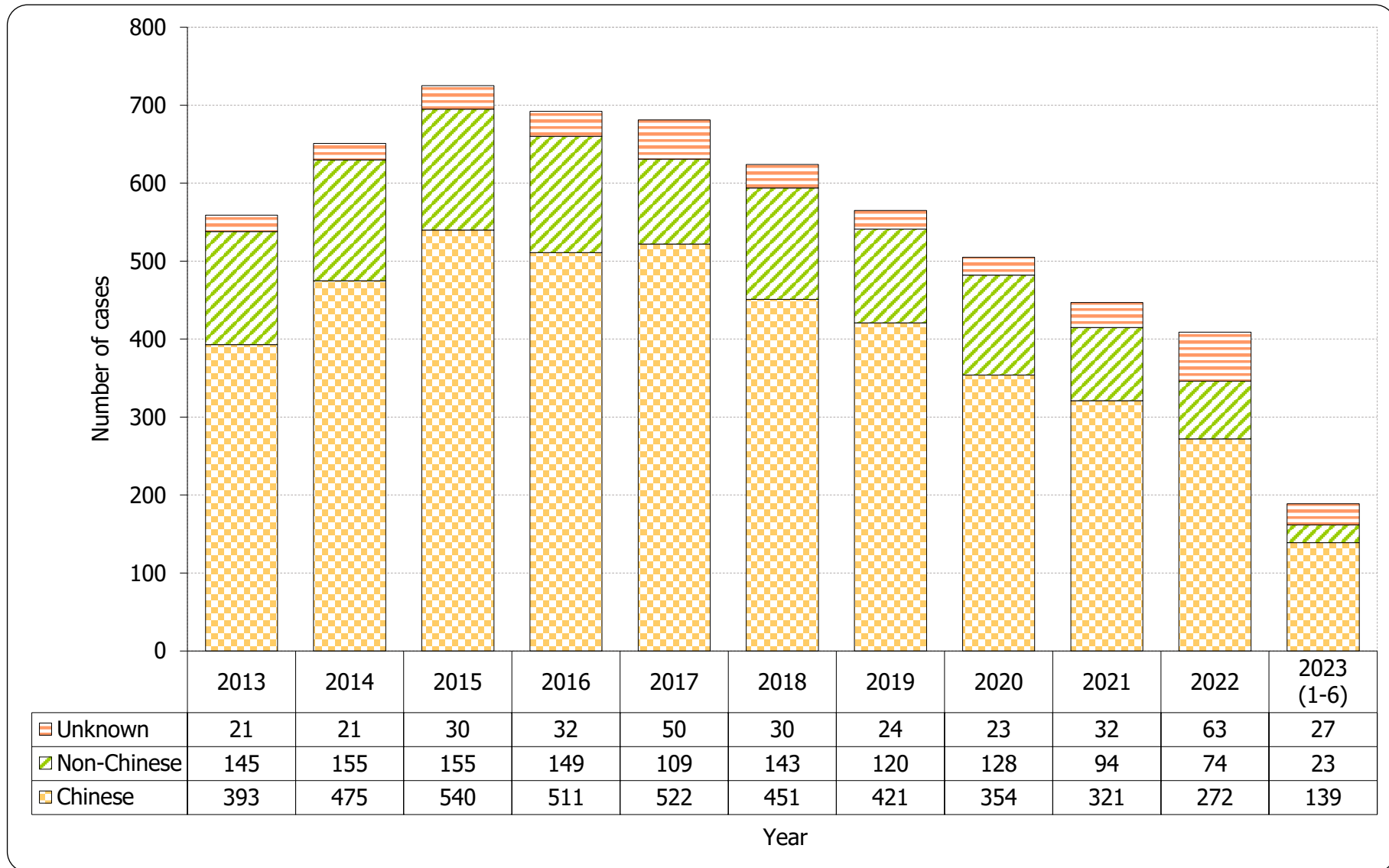


### 3. Ethnicity of reported HIV/AIDS

**Table 3.1 Distribution of ethnicity of reported HIV**

	This quarter (Apr - Jun 2023)	Last quarter (Jan - Mar 2023)	Same quarter last year (Apr - Jun 2022)	Cumulative (1984 – Jun 2023)
<b>Chinese</b>	67	72	85	8,245
<b>Non-Chinese</b>	11	12	20	3,177
<i>Asian</i>	<i>9</i>	<i>7</i>	<i>15</i>	<i>1,651</i>
<i>White</i>	<i>0</i>	<i>2</i>	<i>4</i>	<i>661</i>
<i>Black</i>	<i>2</i>	<i>2</i>	<i>1</i>	<i>278</i>
<i>Others</i>	<i>0</i>	<i>1</i>	<i>0</i>	<i>587</i>
<b>Unknown</b>	15	12	20	408
<b>Total</b>	<b>93</b>	<b>96</b>	<b>125</b>	<b>11,830</b>

**Chart 3.1 Distribution of ethnicity of reported HIV**

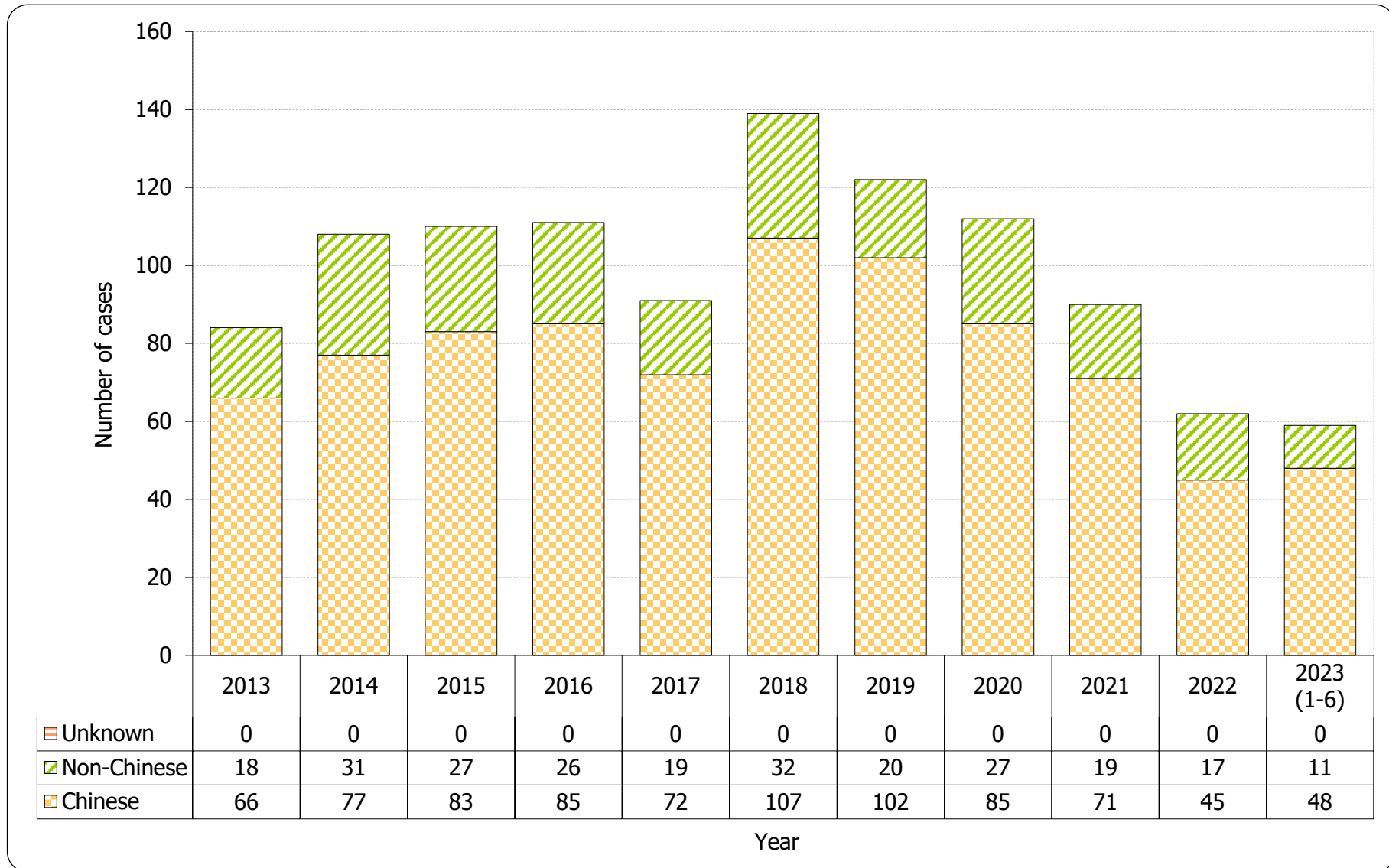


**Table 3.2 Distribution of ethnicity of reported AIDS**

	This quarter (Apr - Jun 2023)	Last quarter (Jan - Mar 2023)	Same quarter last year (Apr - Jun 2022)	Cumulative (1984 – Jun 2023)
<b>Chinese</b>	19	29	17	1,885
<b>Non-Chinese</b>	5	6	6	556
<i>Asian</i>	<i>4</i>	<i>4</i>	<i>5</i>	<i>395</i>
<i>White</i>	<i>0</i>	<i>2</i>	<i>1</i>	<i>106</i>
<i>Black</i>	<i>1</i>	<i>0</i>	<i>0</i>	<i>46</i>
<i>Others</i>	<i>0</i>	<i>0</i>	<i>0</i>	<i>9</i>
<b>Unknown</b>	0	0	0	0
<b>Total</b>	<b>24</b>	<b>35</b>	<b>23</b>	<b>2,441</b>



**Chart 3.2 Distribution of ethnicity of reported AIDS**

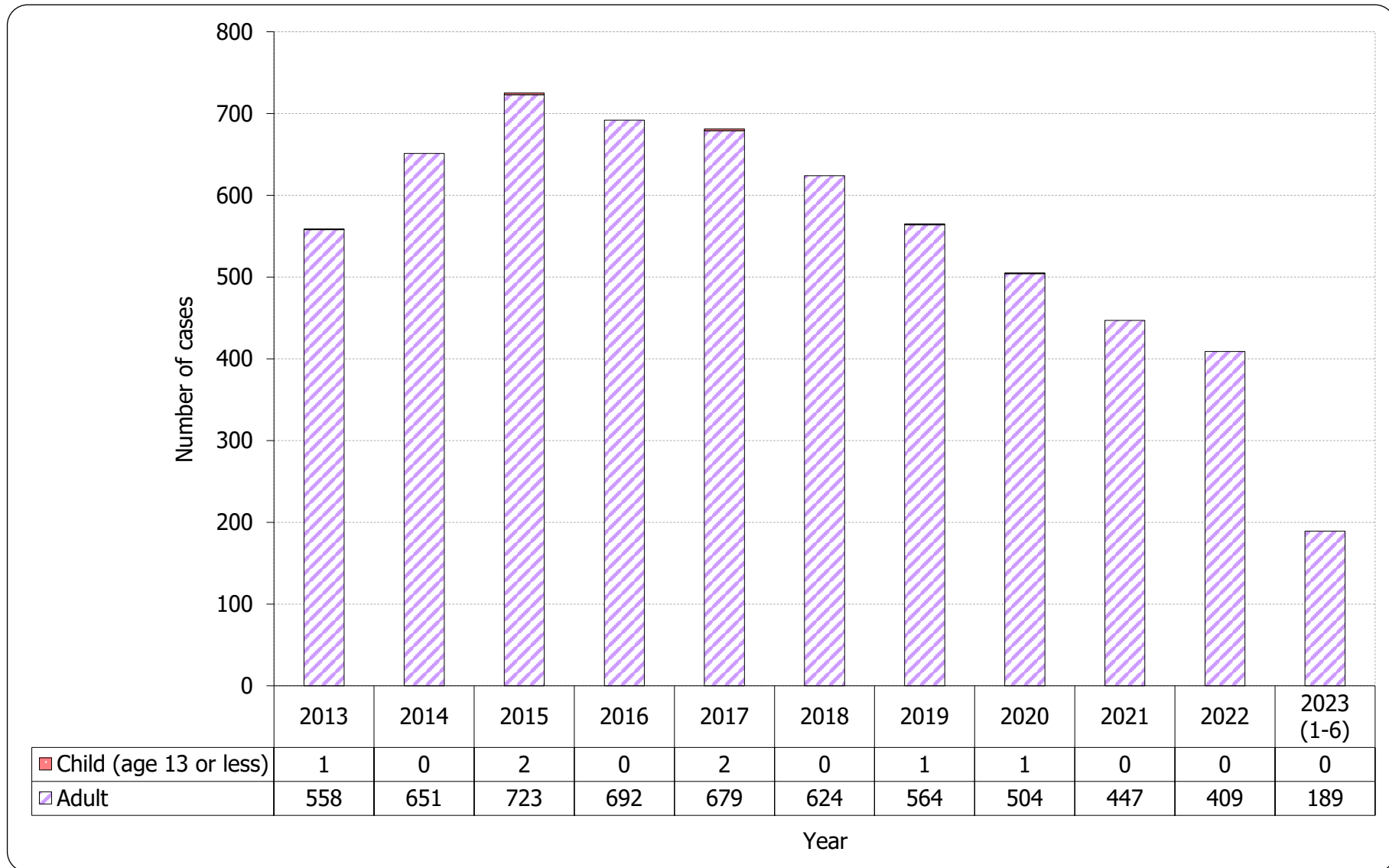


#### 4. Age distribution of reported HIV/AIDS

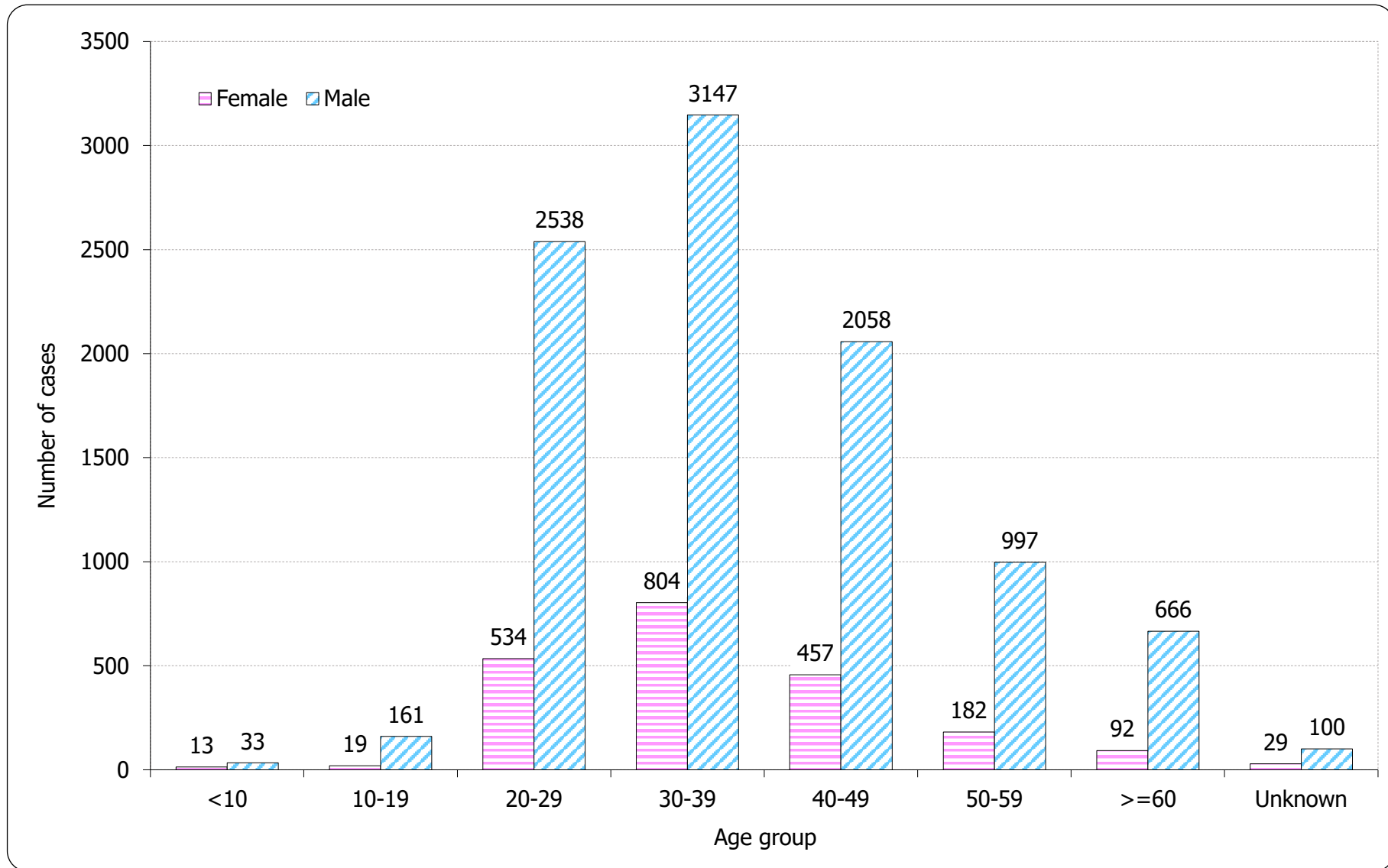
**Table 4.1 Age distribution of reported HIV**

	This quarter (Apr - Jun 2023)	Last quarter (Jan - Mar 2023)	Same quarter last year (Apr - Jun 2022)	Cumulative (1984 – Jun 2023)
Adult	93	96	125	11,775
Child (age 13 or less)	0	0	0	55
<b>Total</b>	<b>93</b>	<b>96</b>	<b>125</b>	<b>11,830</b>

**Chart 4.1 Age distribution of reported HIV**



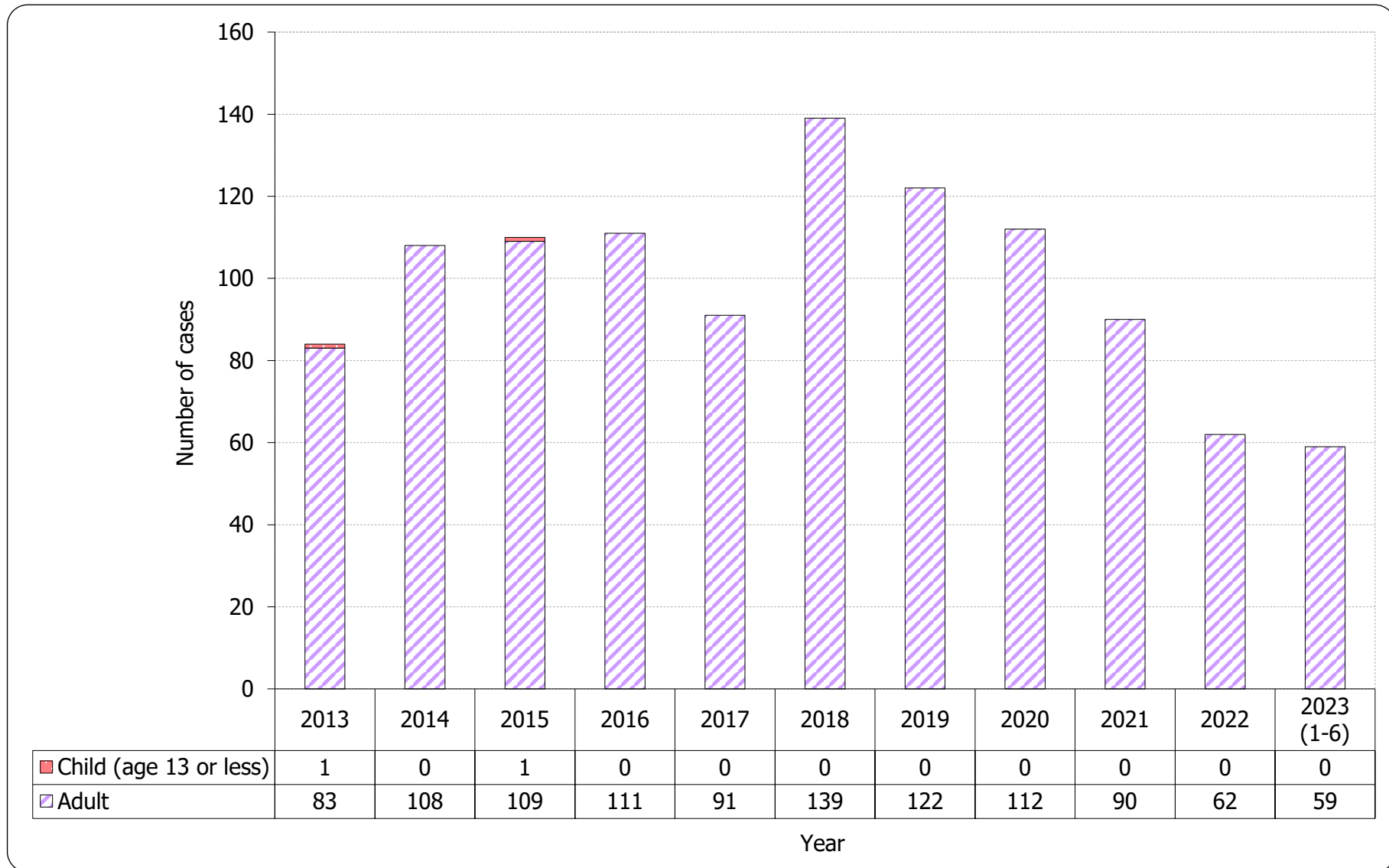
**Chart 4.2 Age group & gender of total reported HIV**



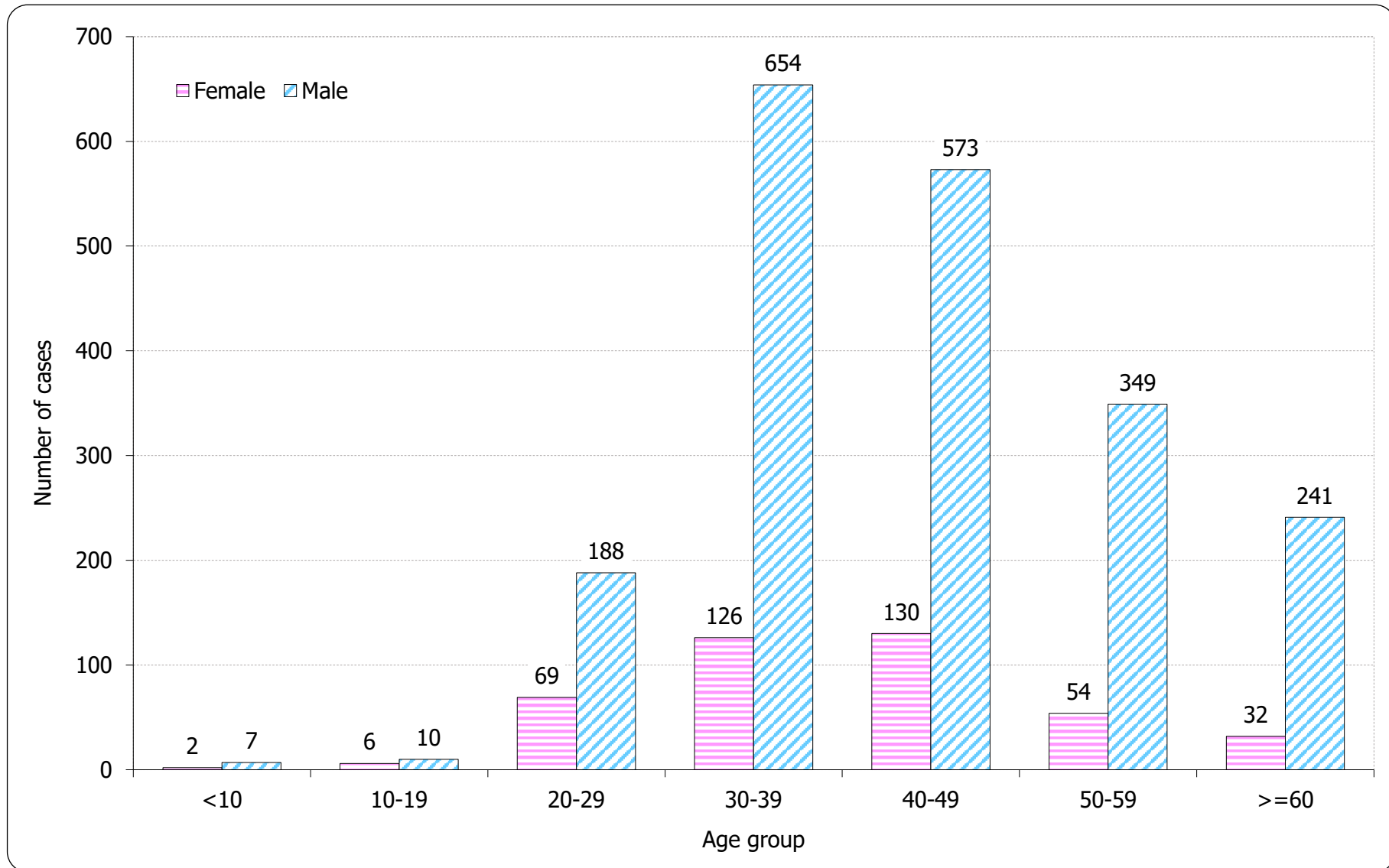
**Table 4.2 Age distribution of reported AIDS**

	This quarter (Apr - Jun 2023)	Last quarter (Jan - Mar 2023)	Same quarter last year (Apr - Jun 2022)	Cumulative (1984 – Jun 2023)
Adult	24	35	23	2,427
Child (age 13 or less)	0	0	0	14
<b>Total</b>	<b>24</b>	<b>35</b>	<b>23</b>	<b>2,441</b>

**Chart 4.3 Age distribution of reported AIDS**



**Chart 4.4 Age group & gender of total reported AIDS**



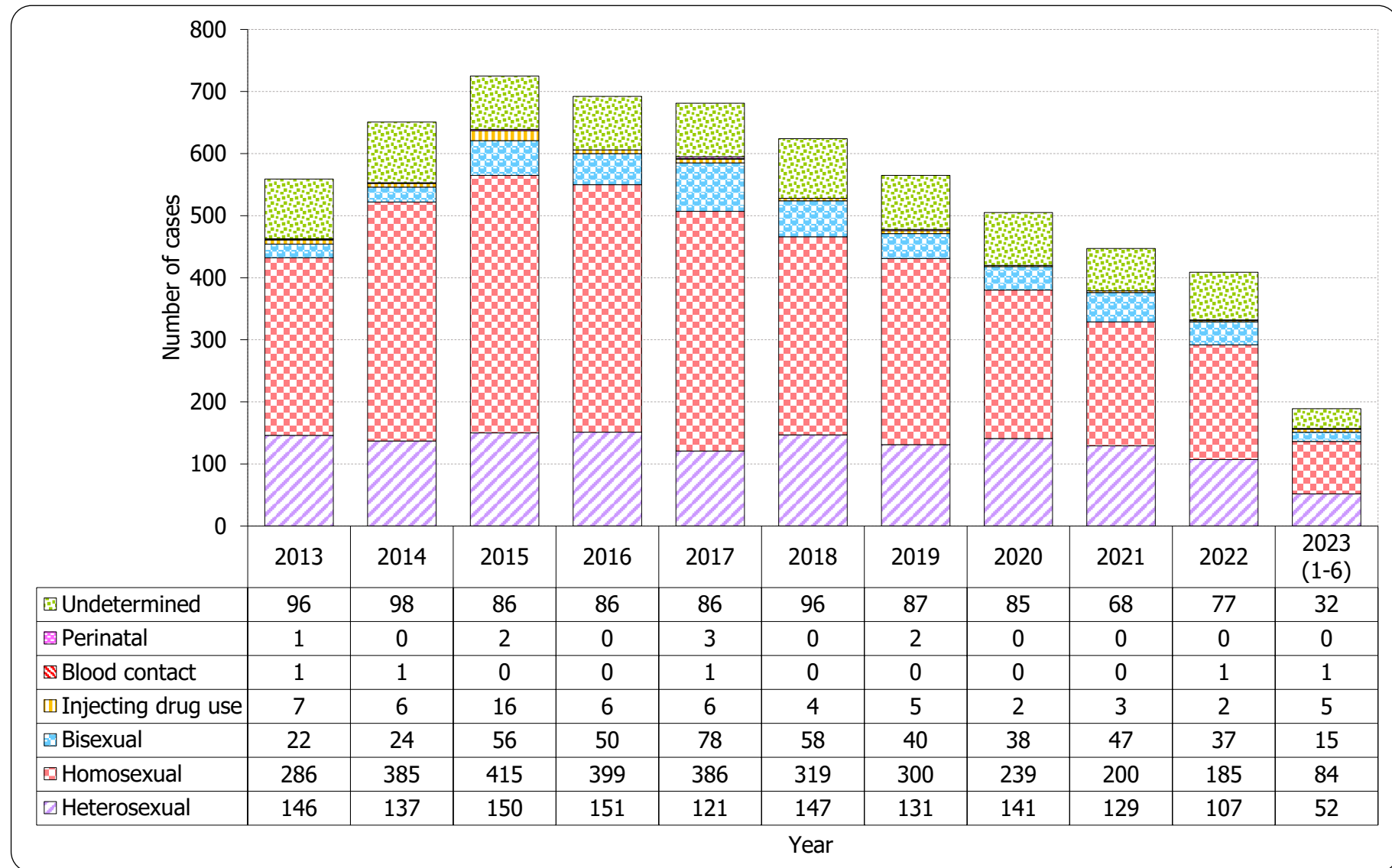
## 5. Exposure categories of reported HIV/AIDS

**Table 5.1 Exposure categories of reported HIV**

	This quarter (Apr - Jun 2023)	Last quarter (Jan - Mar 2023)	Same quarter last year (Apr - Jun 2022)	Cumulative (1984 – Jun 2023)
Heterosexual	31	21	32	3,798
Homosexual	29	55	57	4,942
Bisexual	10	5	11	703
Injecting drug use	3	2	0	380
Blood / blood product infusion	0	1	1	87
Perinatal	0	0	0	35
Undetermined	20	12	24	1,885
<b>Total</b>	<b>93</b>	<b>96</b>	<b>125</b>	<b>11,830</b>



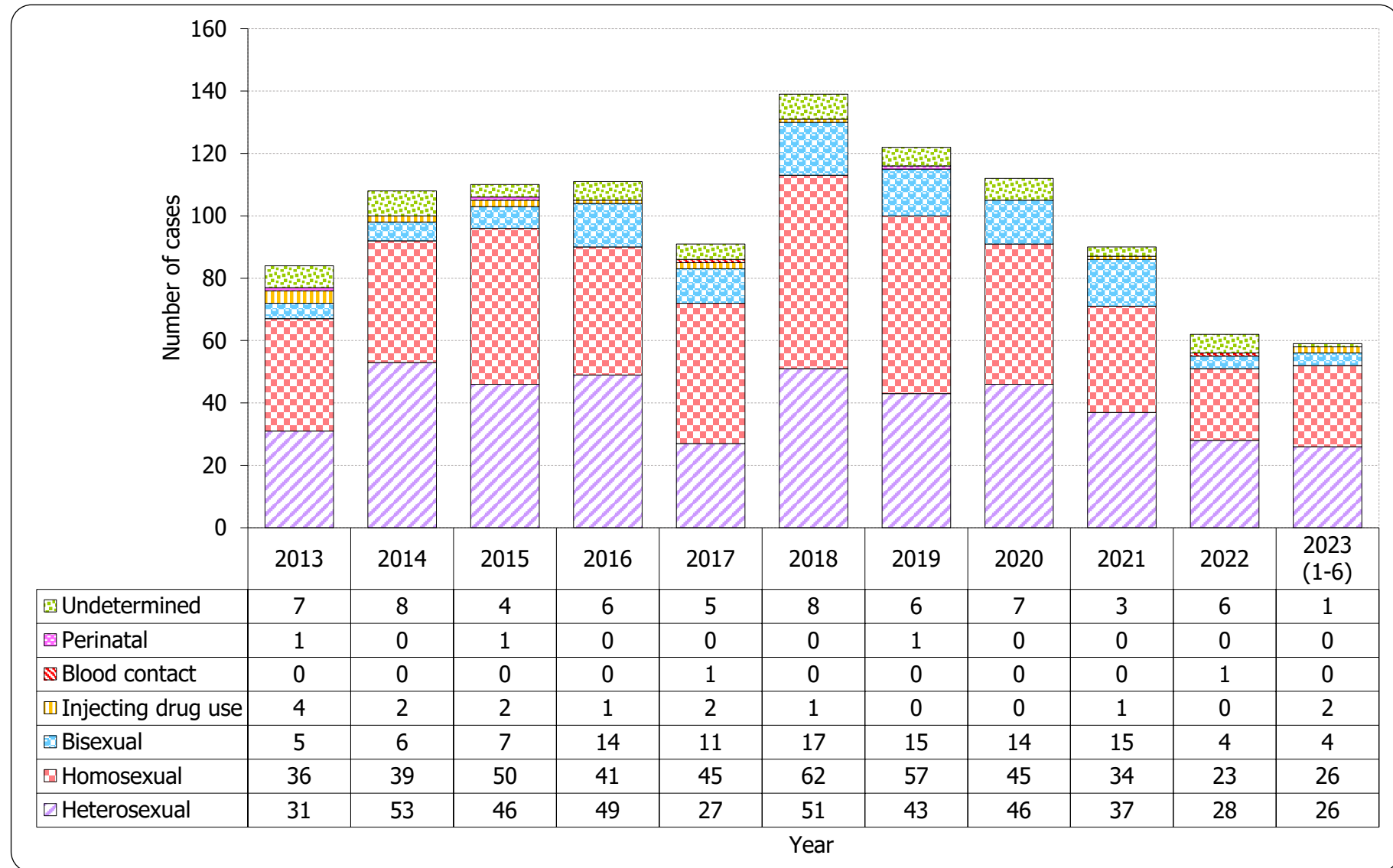
**Chart 5.1 Exposure categories of reported HIV**



**Table 5.2 Exposure categories of reported AIDS**

	This quarter (Apr - Jun 2023)	Last quarter (Jan - Mar 2023)	Same quarter last year (Apr - Jun 2022)	Cumulative (1984 – Jun 2023)
Heterosexual	11	15	10	1,228
Homosexual	9	17	9	778
Bisexual	2	2	1	168
Injecting drug use	1	1	0	70
Blood / blood product infusion	0	0	1	26
Perinatal	0	0	0	11
Undetermined	1	0	2	160
<b>Total</b>	<b>24</b>	<b>35</b>	<b>23</b>	<b>2,441</b>

**Chart 5.2 Exposure categories of reported AIDS**



## 6. Ratio (heterosexual : homosexual / bisexual) of sexually acquired HIV infection in men

**Table 6.1 Ratio of sexually acquired infection in men with reported HIV/AIDS (heterosexual : homo / bisexual) by quarter**

	This quarter (Apr - Jun 2023)	Last quarter (Jan - Mar 2023)	Same quarter last year (Apr - Jun 2022)	Cumulative (1984 – Jun 2023)
HIV	0.4 : 1	0.2 : 1	0.3 : 1	<b>0.4 : 1</b>
AIDS	0.5 : 1	0.6 : 1	0.5 : 1	<b>0.9 : 1</b>

**Table 6.2 Ratio of sexually acquired infection in men with reported HIV/AIDS (heterosexual : homo / bisexual) by year**

	2013	2014	2015	2016	2017	2018	2019	2020	2021	2022	2023 (1-6)	1984 – Jun 2023
HIV	0.2 : 1	0.2 : 1	0.2 : 1	0.2 : 1	0.1 : 1	0.2 : 1	0.2 : 1	0.3 : 1	0.3 : 1	0.3 : 1	0.3 : 1	<b>0.4 : 1</b>
AIDS	0.4 : 1	0.7 : 1	0.5 : 1	0.5 : 1	0.3 : 1	0.3 : 1	0.4 : 1	0.4 : 1	0.5 : 1	0.6 : 1	0.6 : 1	<b>0.9 : 1</b>

## 7. Injecting drug users in reported HIV/AIDS

**Table 7.1 Injecting drug users in reported HIV/AIDS**

	This quarter (Apr - Jun 2023)	Last quarter (Jan - Mar 2023)	Same quarter last year (Apr - Jun 2022)	Cumulative (1984 – Jun 2023)
HIV (% of reported HIV)	3 3.2%	2 2.1%	0 0.0%	<b>380</b> <b>3.2%</b>
AIDS (% of reported AIDS)	1 4.2%	1 2.9%	0 0.0%	<b>70</b> <b>2.9%</b>

**Table 7.2 Number of injecting drug user in reported HIV/AIDS by year**

	2013	2014	2015	2016	2017	2018	2019	2020	2021	2022	2023 (1-6)	1984 – Jun 2023
HIV (% of reported HIV)	7 (1.3%)	6 (0.9%)	16 (2.2%)	6 (0.9%)	6 (0.9%)	4 (0.6%)	5 (0.9%)	2 (0.4%)	3 (0.7%)	2 (0.5%)	5 (2.6%)	<b>380</b> <b>(3.2%)</b>
AIDS (% of reported AIDS)	4 (4.8%)	2 (1.9%)	2 (1.8%)	1 (0.9%)	2 (2.2%)	1 (0.7%)	0 (0.0%)	0 (0.0%)	1 (1.1%)	0 (0.0%)	2 (3.4%)	<b>70</b> <b>(2.9%)</b>

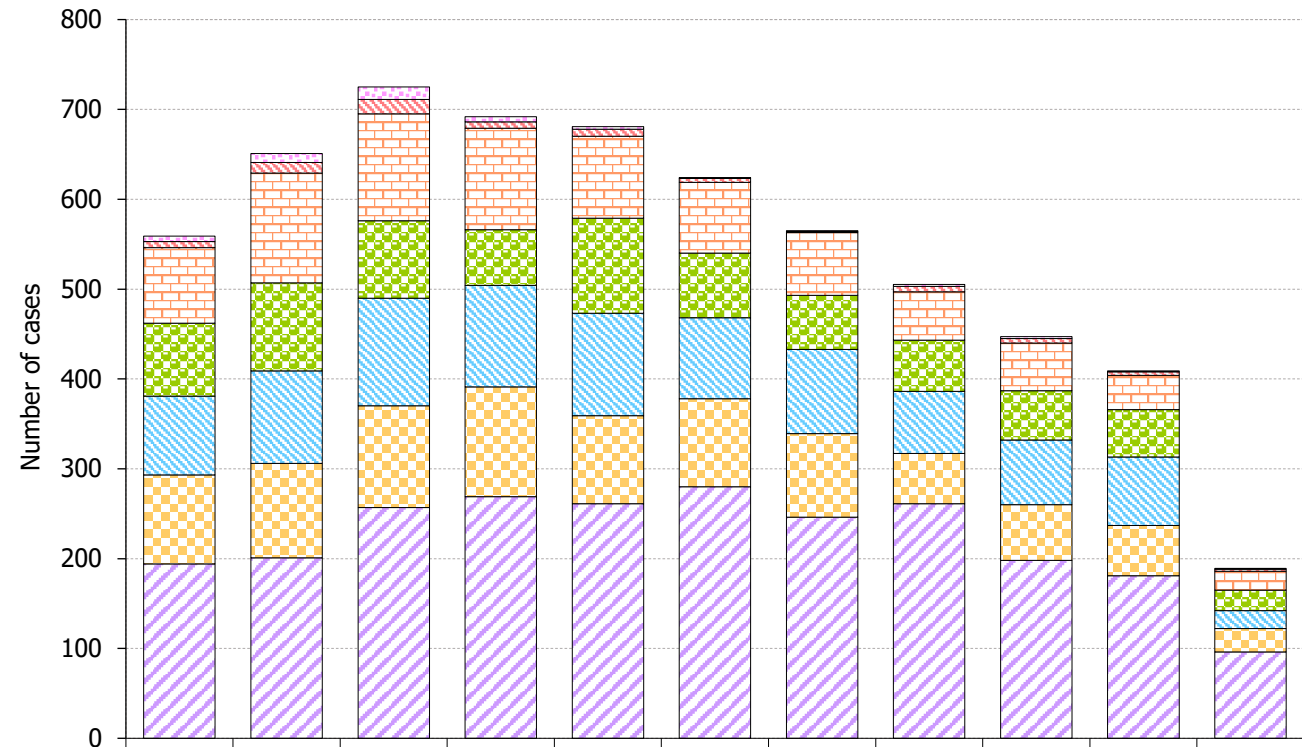
## 8. Source of referral of reported HIV/AIDS

**Table 8.1 Source of referral of reported HIV**

	This quarter (Apr - Jun 2023)	Last quarter (Jan - Mar 2023)	Same quarter last year (Apr - Jun 2022)	Cumulative (1984 – Jun 2023)
Public hospitals / clinics / laboratories	47	49	54	4,916
Private hospitals / clinics / laboratories	12	14	17	2,230
Social Hygiene Clinics	11	9	29	1,720
DH AIDS Unit	11	12	14	1,493
AIDS service organisations (NGOs)	10	11	10	1,152
Hong Kong Red Cross Blood Transfusion Service	1	1	1	182
Drug rehabilitation services	1	0	0	137
<b>Total</b>	<b>93</b>	<b>96</b>	<b>125</b>	<b>11,830</b>



**Chart 8.1 Source of referral of reported HIV**



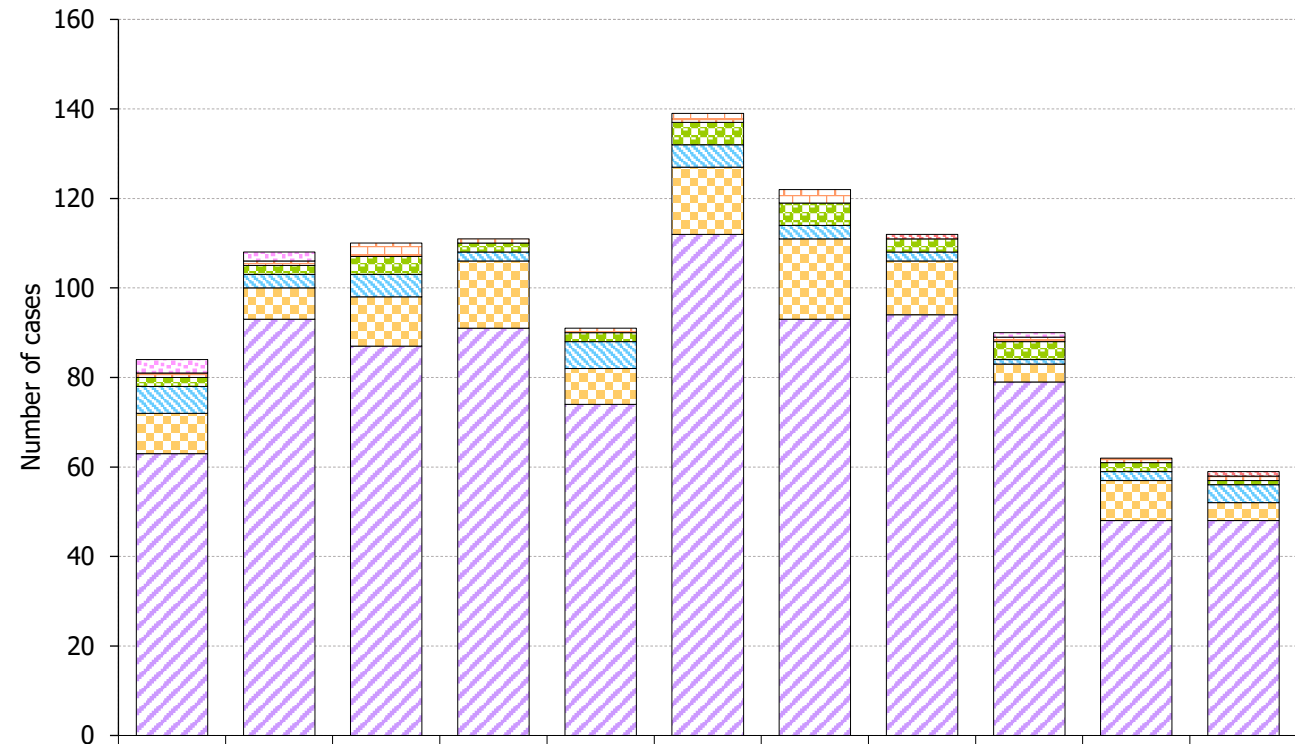
	2013	2014	2015	2016	2017	2018	2019	2020	2021	2022	2023 (1-6)
Drug rehabilitation services	6	10	14	6	3	1	1	2	2	1	1
Hong Kong Red Cross Blood Transfusion Service	7	12	16	7	8	4	1	6	5	4	2
AIDS service organisations (NGOs)	84	122	119	113	91	79	70	54	53	38	21
DH AIDS Unit	81	98	86	62	106	72	60	57	55	53	23
Social Hygiene Clinics	88	103	120	113	114	90	94	69	72	76	20
Private hospitals / clinics / laboratories	99	105	113	122	98	98	93	56	62	56	26
Public hospitals / clinics / laboratories	194	201	257	269	261	280	246	261	198	181	96

Year

**Table 8.2 Source of referral of reported AIDS**

	This quarter (Apr - Jun 2023)	Last quarter (Jan - Mar 2023)	Same quarter last year (Apr - Jun 2022)	Cumulative (1984 – Jun 2023)
Public hospitals / clinics / laboratories	18	30	15	1,892
Private hospitals / clinics / laboratories	2	2	6	304
Social Hygiene Clinics	2	2	0	85
DH AIDS Unit	0	1	1	121
AIDS service organisations (NGOs)	1	0	1	21
Hong Kong Red Cross Blood Transfusion Service	1	0	0	11
Drug rehabilitation services	0	0	0	7
<b>Total</b>	<b>24</b>	<b>35</b>	<b>23</b>	<b>2,441</b>

**Chart 8.2 Source of referral of Reported AIDS**



	2013	2014	2015	2016	2017	2018	2019	2020	2021	2022	2023 (1-6)
Drug rehabilitation services	3	2	0	0	0	0	0	0	1	0	0
Hong Kong Red Cross Blood Transfusion Service	0	0	0	0	0	0	0	1	0	0	1
AIDS service organisations (NGOs)	1	1	3	1	1	2	3	0	1	1	1
DH AIDS Unit	2	2	4	2	2	5	5	3	4	2	1
Social Hygiene Clinics	6	3	5	2	6	5	3	2	1	2	4
Private hospitals / clinics / laboratories	9	7	11	15	8	15	18	12	4	9	4
Public hospitals / clinics / laboratories	63	93	87	91	74	112	93	94	79	48	48

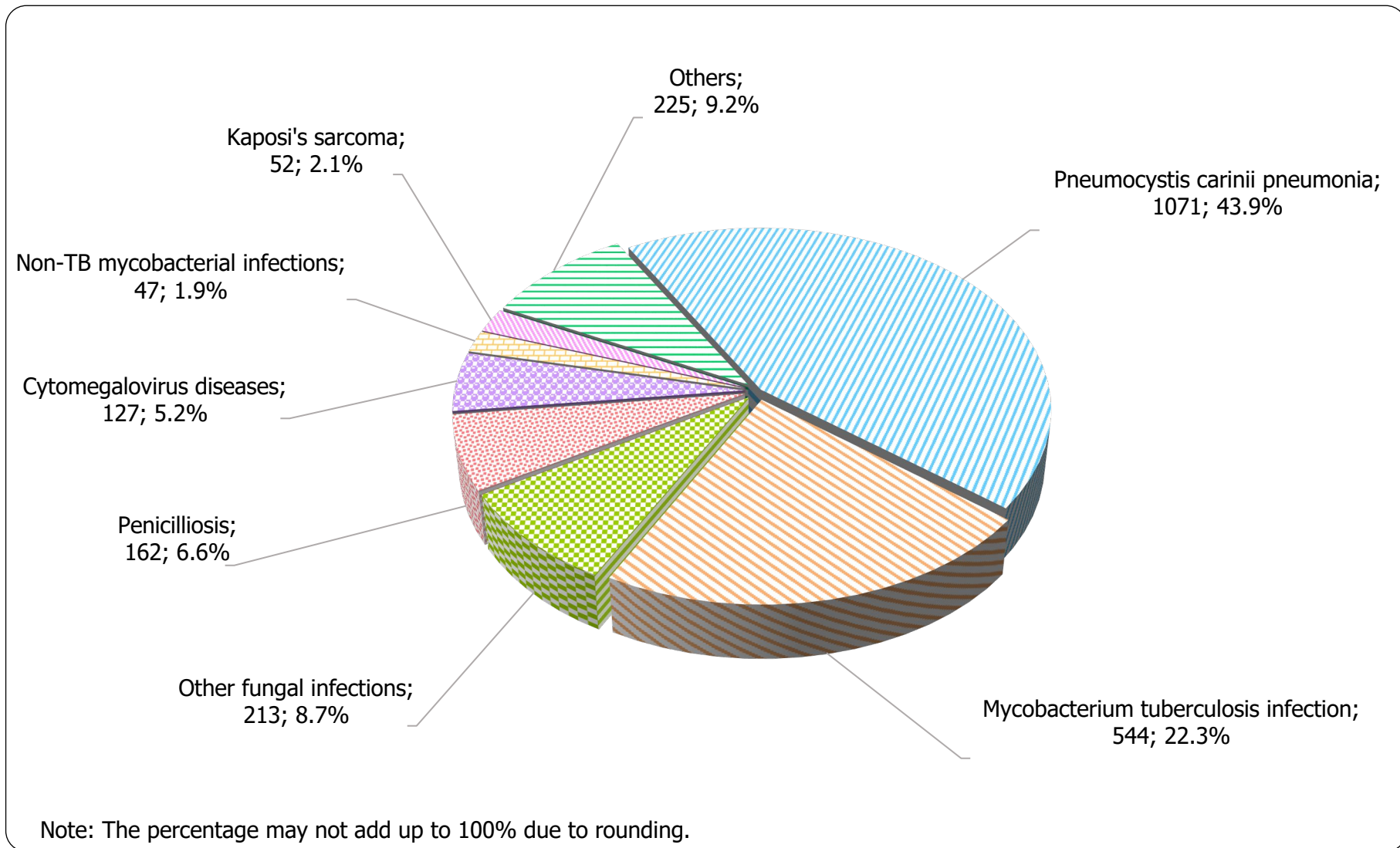
Year

## 9. Distribution of AIDS defining illnesses

**Table 9.1 Distribution of AIDS defining illness of reported AIDS**

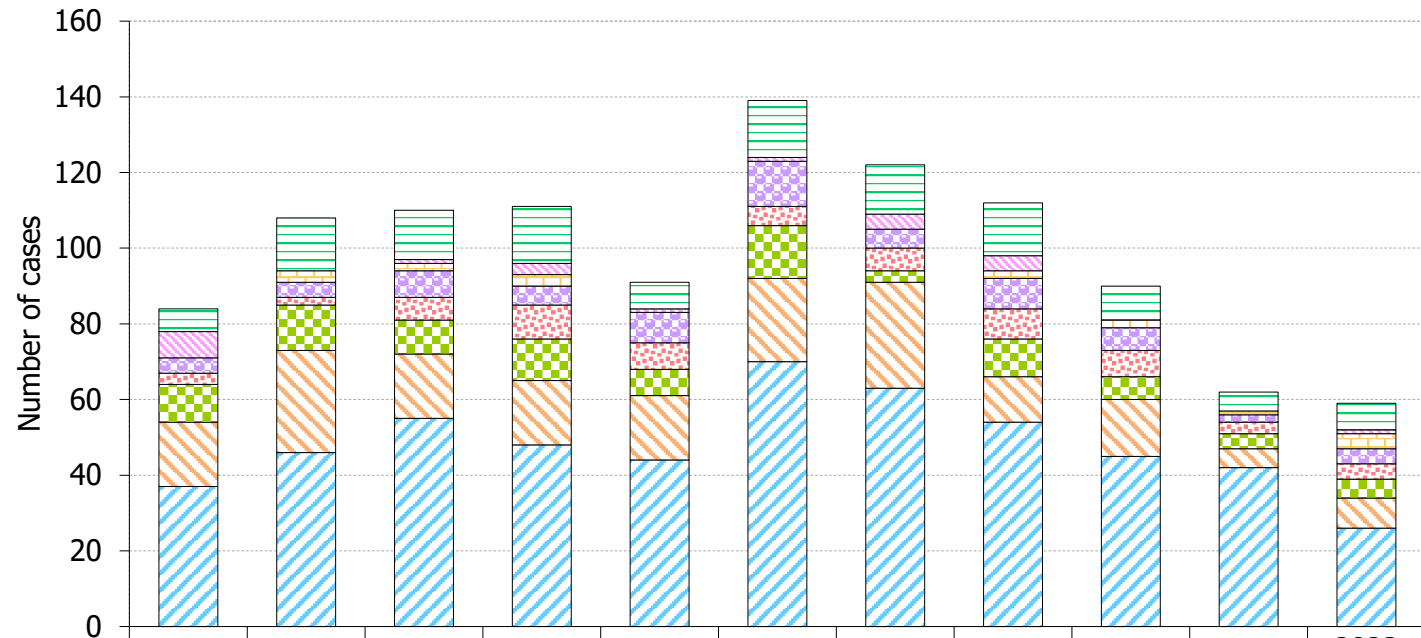
	This quarter (Apr - Jun 2023)	Last quarter (Jan - Mar 2023)	Same quarter last year (Apr - Jun 2022)	Cumulative (1984 – Jun 2023)
<i>Pneumocystis carinii pneumonia</i>	8	18	17	1,071
<i>Mycobacterium tuberculosis</i>	4	4	1	544
Other fungal infections	3	2	2	213
Penicilliosis	3	1	2	162
Cytomegalovirus diseases	0	4	1	127
Non-TB mycobacterial infections	2	2	0	47
Kaposi's sarcoma	0	1	0	52
Others	4	3	0	225
<b>Total</b>	<b>24</b>	<b>35</b>	<b>23</b>	<b>2,441</b>

**Chart 9.1 AIDS defining illness of total reported AIDS**



Format: [ADI; Number; %]

**Chart 9.2 AIDS defining illness of reported AIDS by year**



	2013	2014	2015	2016	2017	2018	2019	2020	2021	2022	2023 (1-6)
Others	6	14	13	15	7	15	13	14	9	5	7
Kaposi's sarcoma	7	0	1	3	1	1	4	4	0	0	1
Non-TB mycobacterial infections	0	3	2	3	0	0	0	2	2	1	4
Cytomegalovirus diseases	4	4	7	5	8	12	5	8	6	2	4
Penicilliosis	3	2	6	9	7	5	6	8	7	3	4
Other fungal infections	10	12	9	11	7	14	3	10	6	4	5
Tuberculosis	17	27	17	17	17	22	28	12	15	5	8
Pneumocystis carinii pneumonia	37	46	55	48	44	70	63	54	45	42	26

Year

## 10. Reported sexually transmitted infections (STIs) diagnosed in Social Hygiene Service

**Table 10.1 Summary table on the reported STIs diagnosed in Social Hygiene Service**

	This quarter (Apr - Jun 2023)	Last quarter (Jan - Mar 2023)	Same quarter last year (Apr - Jun 2022)	In year 2022
Syphilis				
<i>Primary</i>	16	13	19	71
<i>Secondary</i>	52	55	48	197
<i>Early latent</i>	56	67	44	212
<i>Late latent</i>	123	106	100	428
<i>Late (cardiovascular / neuro / ocular)</i>	2	5	2	5
<i>Congenital (early)</i>	0	0	0	0
<i>Congenital (late)</i>	0	0	0	0
<i>Others *</i>	2	3	<i>N.A.</i>	10 <sup>#</sup>
Syphilis total	251	249 <sup>^</sup>	213	923 <sup>^</sup>

(to be cont'd)

**Table 10.1 (cont'd)**

	This quarter (Apr - Jun 2023)	Last quarter (Jan - Mar 2023)	Same quarter last year (Apr - Jun 2022)	In year 2022
Gonorrhoea	378	422	384	1,482
Non-gonococcal urethritis (Male)	291	327	616	2,279
Non-specific genital infection (Female)	257	353	389	1,580
Chlamydia trachomatis *	415	411	N.A.	538 #
Genital wart	250	277	317	1,111
Herpes genitalis	100	118	107	453
Pediculosis pubis	37	29	17	80
Trichomonas	37	42	35	192
Genital ulcer	24	8	0	3
Mycoplasma genitalium *	11	20	N.A.	12 #
Chancroid / Lymphogranuloma venereum	1	0	0	0
Others	50	63 ^	186	537 ^
<b>Total</b>	<b>2,102</b>	<b>2,319 ^</b>	<b>2,264</b>	<b>9,190 ^</b>

\* Added as a new category since 2022 Q3

# Figures for 2022 Q3 to 2022 Q4 only

^ Revised figure



## 11. Gender distribution of reported STIs

**Table 11.1 Gender distribution of selected STI reported by Social Hygiene Service**

	This quarter (Apr - Jun 2023)	Last quarter (Jan - Mar 2023)	Same quarter last year (Apr - Jun 2022)	In year 2022
<b>Primary Syphilis</b>				
Male (M)	16	13	18	69
Female (F)	0	0	1	2
<b>M : F</b>	<b>N.A.</b>	<b>N.A.</b>	<b>18.0 : 1</b>	<b>34.5 : 1</b>
<b>Gonorrhoea</b>				
Male (M)	343	378	347	1,297
Female (F)	35	44	37	185
<b>M : F</b>	<b>9.8 : 1</b>	<b>8.6 : 1</b>	<b>9.4 : 1</b>	<b>7.0 : 1</b>
<b>NGU / NSGI / CT *</b>				
Male (M)	589	659 ^	616	2,707 ^
Female (F)	374	432 ^	389	1,690 ^
<b>M : F</b>	<b>1.6 : 1</b>	<b>1.5 : 1 ^</b>	<b>1.6 : 1</b>	<b>1.6 : 1 ^</b>

(to be cont'd)

**Table 11.1 (cont'd)**

	This quarter (Apr - Jun 2023)	Last quarter (Jan - Mar 2023)	Same quarter last year (Apr - Jun 2022)	In year 2022
<b>Genital wart</b>				
Male (M)	193	218	247	863
Female (F)	57	59	70	248
<b>M : F</b>	<b>3.4 : 1</b>	<b>3.7 : 1</b>	<b>3.5 : 1</b>	<b>3.5 : 1</b>
<i>Herpes genitalis</i>				
Male (M)	77	80	57	269
Female (F)	23	38	50	184
<b>M : F</b>	<b>3.3 : 1</b>	<b>2.1 : 1</b>	<b>1.1 : 1</b>	<b>1.5 : 1</b>

\* NGU = Non-gonococcal urethritis

NSGI = Non-specific genital infection

CT = Chlamydia trachomatis

^ Revised figure

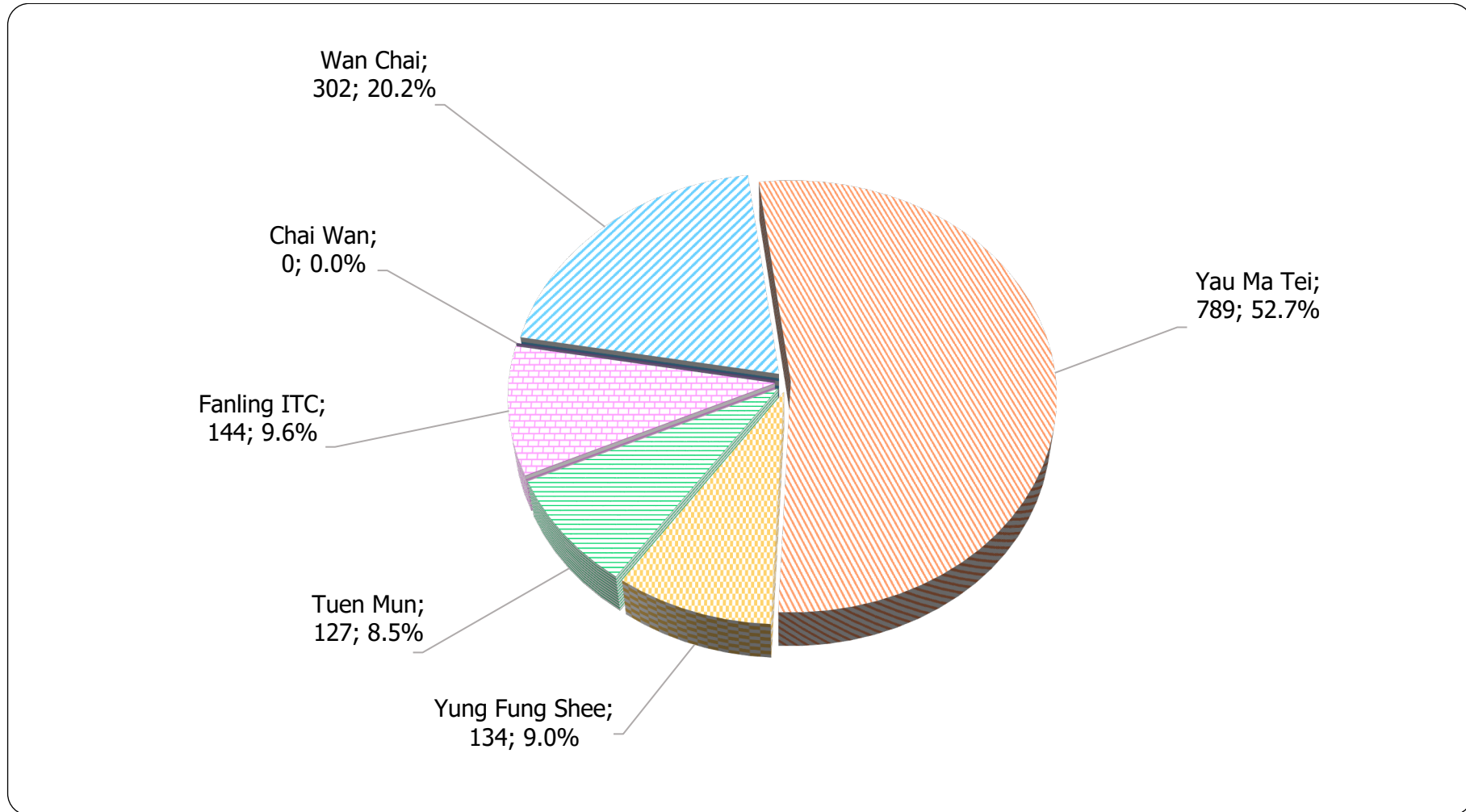
**Table 11.2 Gender distribution of reported STI by clinic**

	This quarter (Apr - Jun 2023)		Last quarter (Jan - Mar 2023)		Same quarter last year (Apr - Jun 2022)		In year 2022	
	Male	Female	Male	Female	Male	Female	Male	Female
Chai Wan	0	0	0	0	0	0	0	0
Wan Chai	302	198	329	318	306	379	1,203	1,544
Yau Ma Tei	789	200	870	103	803	0	3,242 ^	29
Yung Fung Shee	134	80	157 ^	103 ^	158	130	667	528
Tuen Mun	127	58	109	90	115	107	485	438
Fanling ITC	144	70	151	89	128	138	546	508
<b>Total</b>	<b>1,496</b>	<b>606</b>	<b>1,616 ^</b>	<b>703 ^</b>	<b>1,510</b>	<b>754</b>	<b>6,143 ^</b>	<b>3,047</b>

^ Revised figure

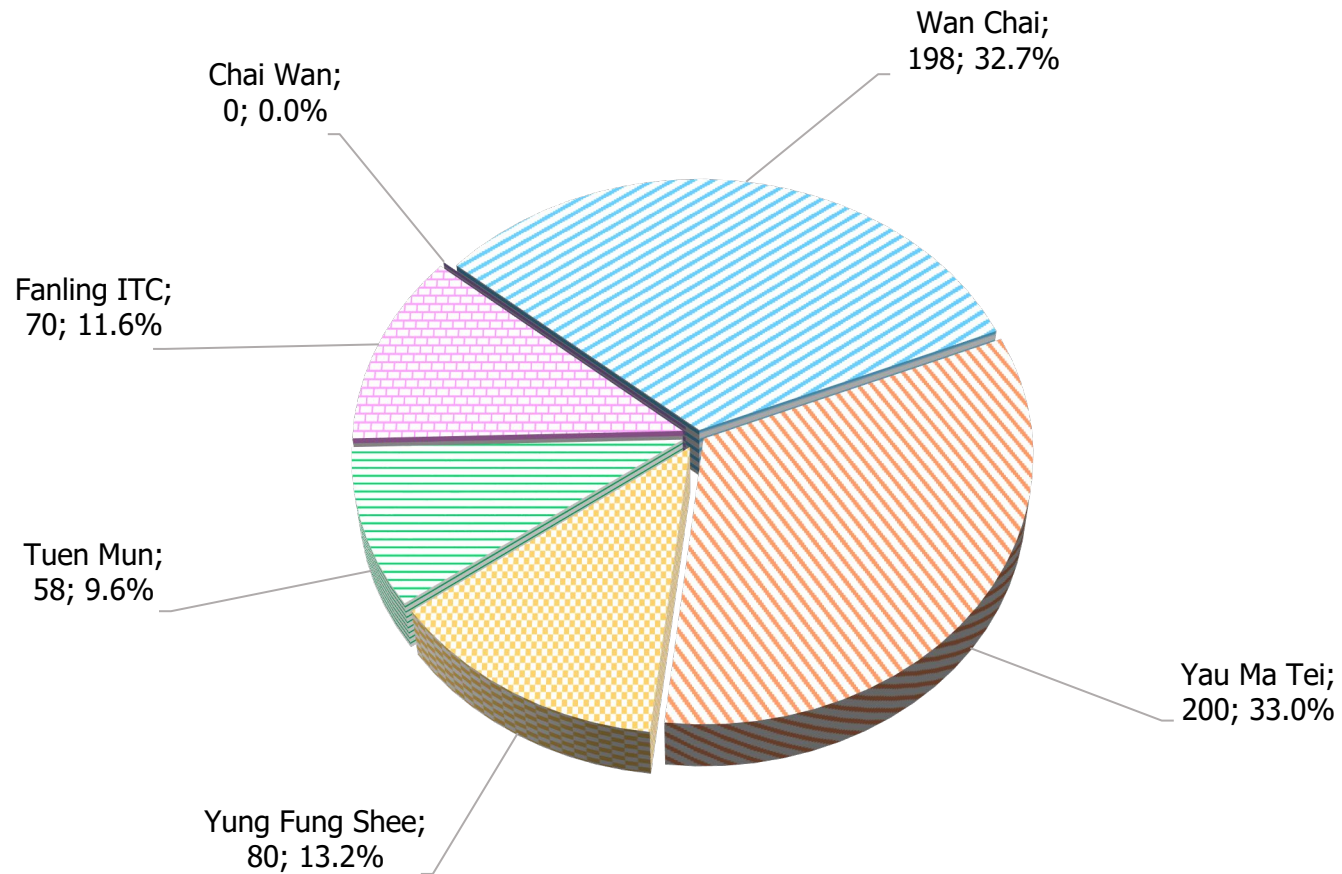
## 12. Clinic distribution

**Chart 12.1 Number of newly report STI in Q2 2023 by clinic (male clients)**



Format: [Clinic; Number; %]

**Chart 12.2 Number of newly report STI in Q2 2023 by clinic (female clients)**



Note: The percentage may not add up to 100% due to rounding.

Format: [Clinic; Number; %]