



The Hong Kong STD/AIDS update is a composite report on HIV/AIDS reporting and STI caseload statistics published three monthly. The current issue has the updated information up to September 2023.

SPP Surveillance Team:

Dr. Annie LO

Ms. Shirry WAN

Correspondence to:

Special Preventive Programme,

Centre for Health Protection, Department of Health

c/o Red Ribbon Centre, 2/F Wang Tau Hom Jockey Club Clinic,

200 Junction Road East, Kowloon, Hong Kong

Telephone: (852) 3143 7200 Facsimile: (852) 2338 0534

E-mail: aids@dh.gov.hk

List of Tables / Figures

1. NUMBER OF HIV/AIDS REPORTED	94
TABLE 1.1 SUMMARY TABLE ON THE REPORTED NUMBER OF HIV/AIDS	94
CHART 1.1 NUMBER OF HIV/AIDS REPORTED	97
2. GENDER DISTRIBUTION OF REPORTED HIV/AIDS	98
TABLE 2.1 GENDER DISTRIBUTION OF REPORTED HIV	98
CHART 2.1 GENDER DISTRIBUTION OF REPORTED HIV BY QUARTER	99
CHART 2.2 GENDER DISTRIBUTION OF REPORTED HIV BY YEAR	100
TABLE 2.2 GENDER DISTRIBUTION OF REPORTED AIDS	101
CHART 2.3 GENDER DISTRIBUTION OF REPORTED AIDS BY QUARTER	102
CHART 2.4 GENDER DISTRIBUTION OF REPORTED AIDS BY YEAR	103
3. ETHNICITY OF REPORTED HIV/AIDS	104
TABLE 3.1 DISTRIBUTION OF ETHNICITY OF REPORTED HIV	104
CHART 3.1 DISTRIBUTION OF ETHNICITY OF REPORTED HIV	105
TABLE 3.2 DISTRIBUTION OF ETHNICITY OF REPORTED AIDS	106
CHART 3.2 DISTRIBUTION OF ETHNICITY OF REPORTED AIDS	107
4. AGE DISTRIBUTION OF REPORTED HIV/AIDS	108
TABLE 4.1 AGE DISTRIBUTION OF REPORTED HIV	108
CHART 4.1 AGE DISTRIBUTION OF REPORTED HIV	109
CHART 4.2 AGE GROUP & GENDER OF TOTAL REPORTED HIV	110
TABLE 4.2 AGE DISTRIBUTION OF REPORTED AIDS	111
CHART 4.3 AGE DISTRIBUTION OF REPORTED AIDS	112
CHART 4.4 AGE GROUP & GENDER OF TOTAL REPORTED AIDS	113
5. EXPOSURE CATEGORIES OF REPORTED HIV/AIDS	114
TABLE 5.1 EXPOSURE CATEGORIES OF REPORTED HIV	114
CHART 5.1 EXPOSURE CATEGORIES OF REPORTED HIV	115
TABLE 5.2 EXPOSURE CATEGORIES OF REPORTED AIDS	116
CHART 5.2 EXPOSURE CATEGORIES OF REPORTED AIDS	117

6. RATIO (HETEROSEXUAL : HOMOSEXUAL / BISEXUAL) OF SEXUALLY ACQUIRED HIV INFECTION IN MEN	118
TABLE 6.1 RATIO OF SEXUALLY ACQUIRED INFECTION IN MEN WITH REPORTED HIV/AIDS (HETEROSEXUAL : HOMO / BISEXUAL) BY QUARTER	118
TABLE 6.2 RATIO OF SEXUALLY ACQUIRED INFECTION IN MEN WITH REPORTED HIV/AIDS (HETEROSEXUAL : HOMO / BISEXUAL) BY YEAR	119
7. INJECTING DRUG USERS IN REPORTED HIV/AIDS	120
TABLE 7.1 INJECTING DRUG USERS IN REPORTED HIV/AIDS	120
TABLE 7.2 NUMBER OF INJECTING DRUG USER IN REPORTED HIV/AIDS BY YEAR	121
8. SOURCE OF REFERRAL OF REPORTED HIV/AIDS	122
TABLE 8.1 SOURCE OF REFERRAL OF REPORTED HIV	122
CHART 8.1 SOURCE OF REFERRAL OF REPORTED HIV	123
TABLE 8.2 SOURCE OF REFERRAL OF REPORTED AIDS	124
CHART 8.2 SOURCE OF REFERRAL OF REPORTED AIDS	125
9. DISTRIBUTION OF AIDS DEFINING ILLNESSES	126
TABLE 9.1 DISTRIBUTION OF AIDS DEFINING ILLNESS OF REPORTED AIDS	126
CHART 9.1 AIDS DEFINING ILLNESS OF TOTAL REPORTED AIDS	127
CHART 9.2 AIDS DEFINING ILLNESS OF REPORTED AIDS BY YEAR	128
10. REPORTED SEXUALLY TRANSMITTED INFECTIONS (STIS) DIAGNOSED IN SOCIAL HYGIENE SERVICE	129
TABLE 10.1 SUMMARY TABLE ON THE REPORTED STIS DIAGNOSED IN SOCIAL HYGIENE SERVICE	129
11. GENDER DISTRIBUTION OF REPORTED STIS	131
TABLE 11.1 GENDER DISTRIBUTION OF SELECTED STI REPORTED BY SOCIAL HYGIENE SERVICE	131
TABLE 11.2 GENDER DISTRIBUTION OF REPORTED STI BY CLINIC	133
12. CLINIC DISTRIBUTION	134
CHART 12.1 NUMBER OF NEWLY REPORT STI IN Q3 2023 BY CLINIC (MALE CLIENTS)	134
CHART 12.2 NUMBER OF NEWLY REPORT STI IN Q3 2023 BY CLINIC (FEMALE CLIENTS)	135

1. Number of HIV/AIDS reported

Table 1.1 Summary table on the reported number of HIV/AIDS

	This quarter (Jul - Sep 2023)		Last quarter (Apr - Jun 2023)		Same quarter last year (Jul - Sep 2022)		Cumulative (1984 – Sep 2023)	
	HIV	AIDS	HIV	AIDS	HIV	AIDS	HIV	AIDS
Sex								
Male	92	23	72	19	80	9	9,792	2,045
Female	21	5	21	5	17	3	2,151	424
Ethnicity / race								
Chinese	73	22	71	19	63	9	8,323	1,907
Non-Chinese	20	6	12	5	17	3	3,198	562
<i>Asian</i>	<i>11</i>	<i>5</i>	<i>10</i>	<i>4</i>	<i>10</i>	<i>3</i>	<i>1,664</i>	<i>400</i>
<i>White</i>	<i>4</i>	<i>1</i>	<i>0</i>	<i>0</i>	<i>3</i>	<i>0</i>	<i>665</i>	<i>107</i>
<i>Black</i>	<i>4</i>	<i>0</i>	<i>2</i>	<i>1</i>	<i>2</i>	<i>0</i>	<i>282</i>	<i>46</i>
<i>Others</i>	<i>1</i>	<i>0</i>	<i>0</i>	<i>0</i>	<i>2</i>	<i>0</i>	<i>587</i>	<i>9</i>
Unknown	20	0	10	0	17	0	422	0

(to be cont'd)

Table 1.1 (cont'd)

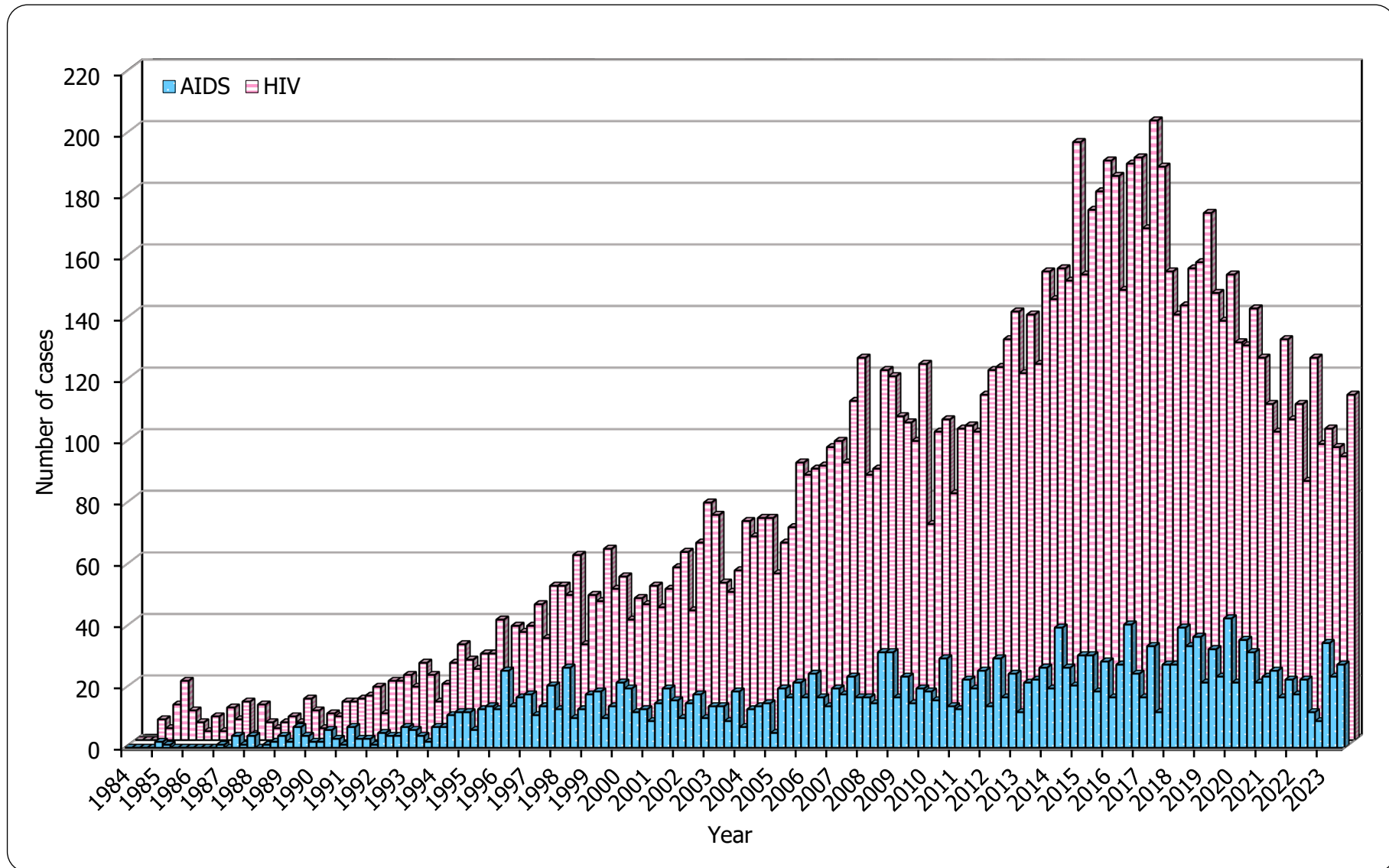
	This quarter (Jul - Sep 2023)		Last quarter (Apr - Jun 2023)		Same quarter last year (Jul - Sep 2022)		Cumulative (1984 – Sep 2023)	
	HIV	AIDS	HIV	AIDS	HIV	AIDS	HIV	AIDS
Age at diagnosis								
Adult	112	28	93	24	97	12	11,887	2,455
Child (age 13 or less)	1	0	0	0	0	0	56	14
Exposure category								
Heterosexual	29	13	34	11	28	7	3,832	1,241
Homosexual	43	9	31	9	41	4	4,989	787
Bisexual	9	3	10	2	7	0	712	171
Injecting drug use	1	0	3	1	2	0	381	70
Blood / blood product infusion	0	0	0	0	0	0	87	26
Mother-to-child transmission	1	0	0	0	0	0	36	11
Undetermined	30	3	15	1	19	1	1,906	163

(to be cont'd)

Table 1.1 (cont'd)

	This quarter (Jul - Sep 2023)		Last quarter (Apr - Jun 2023)		Same quarter last year (Jul - Sep 2022)		Cumulative (1984 – Sep 2023)	
	HIV	AIDS	HIV	AIDS	HIV	AIDS	HIV	AIDS
Source of referral								
Public hospitals / clinics / laboratories	61	24	47	18	39	8	4,977	1,916
Private hospitals / clinics / laboratories	21	2	12	2	13	1	2,251	306
Social Hygiene Clinics	13	1	11	2	18	2	1,733	86
DH AIDS Unit	9	1	11	0	14	1	1,501	122
AIDS service organisations (NGOs)	7	0	10	1	11	0	1,160	21
Hong Kong Red Cross Blood Transfusion Service	2	0	1	1	1	0	184	11
Drug rehabilitation services	0	0	1	0	1	0	137	7
Total	113	28	93	24	97	12	11,943	2,469

Chart 1.1 Number of HIV/AIDS reported



2. Gender distribution of reported HIV/AIDS

Table 2.1 Gender distribution of reported HIV

	This quarter (Jul - Sep 2023)	Last quarter (Apr - Jun 2023)	Same quarter last year (Jul - Sep 2022)	Cumulative (1984 – Sep 2023)
Male	92	72	80	9,792
Female	21	21	17	2,151
Total	113	93	97	11,943

Chart 2.1 Gender distribution of reported HIV by quarter

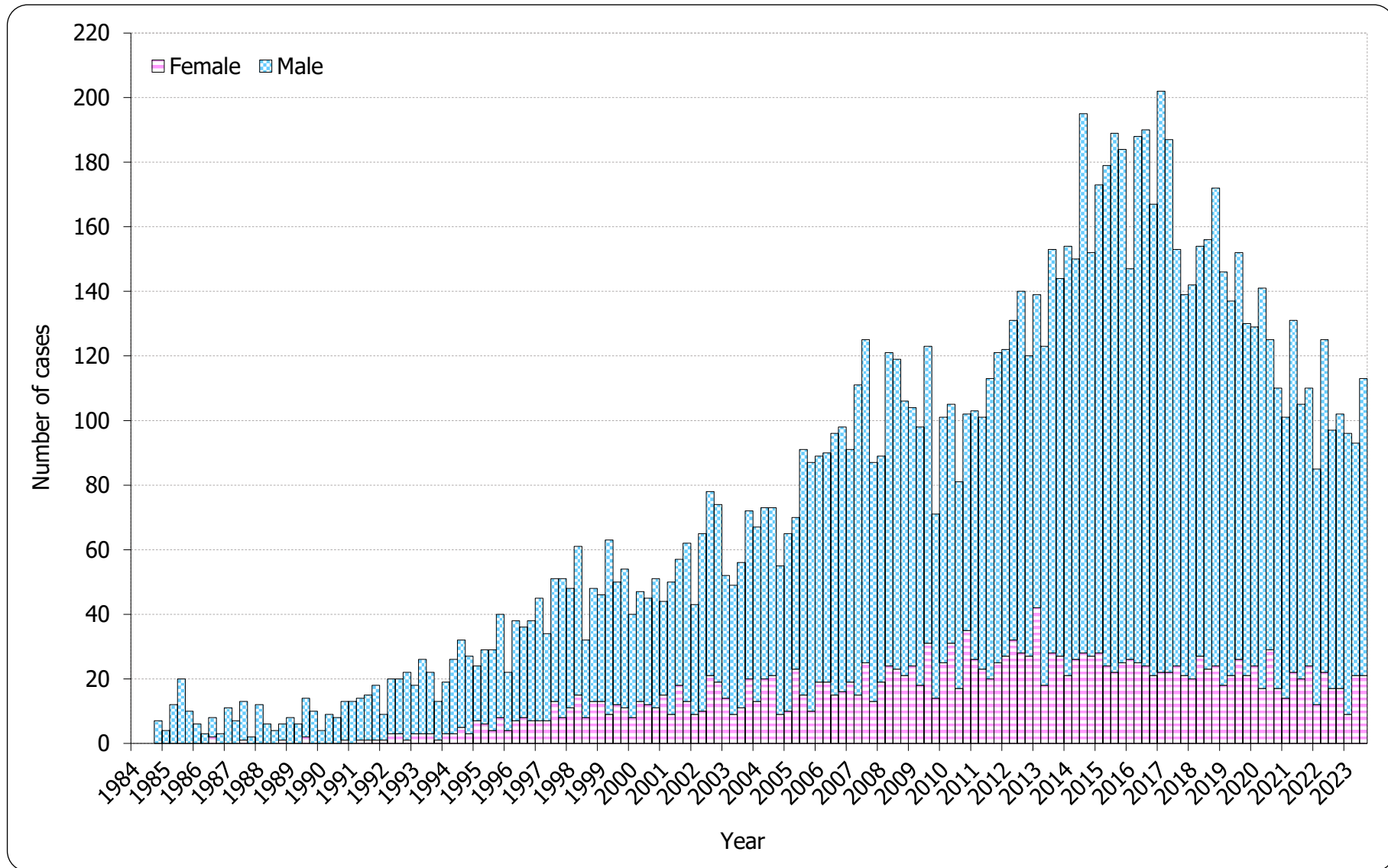


Chart 2.2 Gender distribution of reported HIV by year

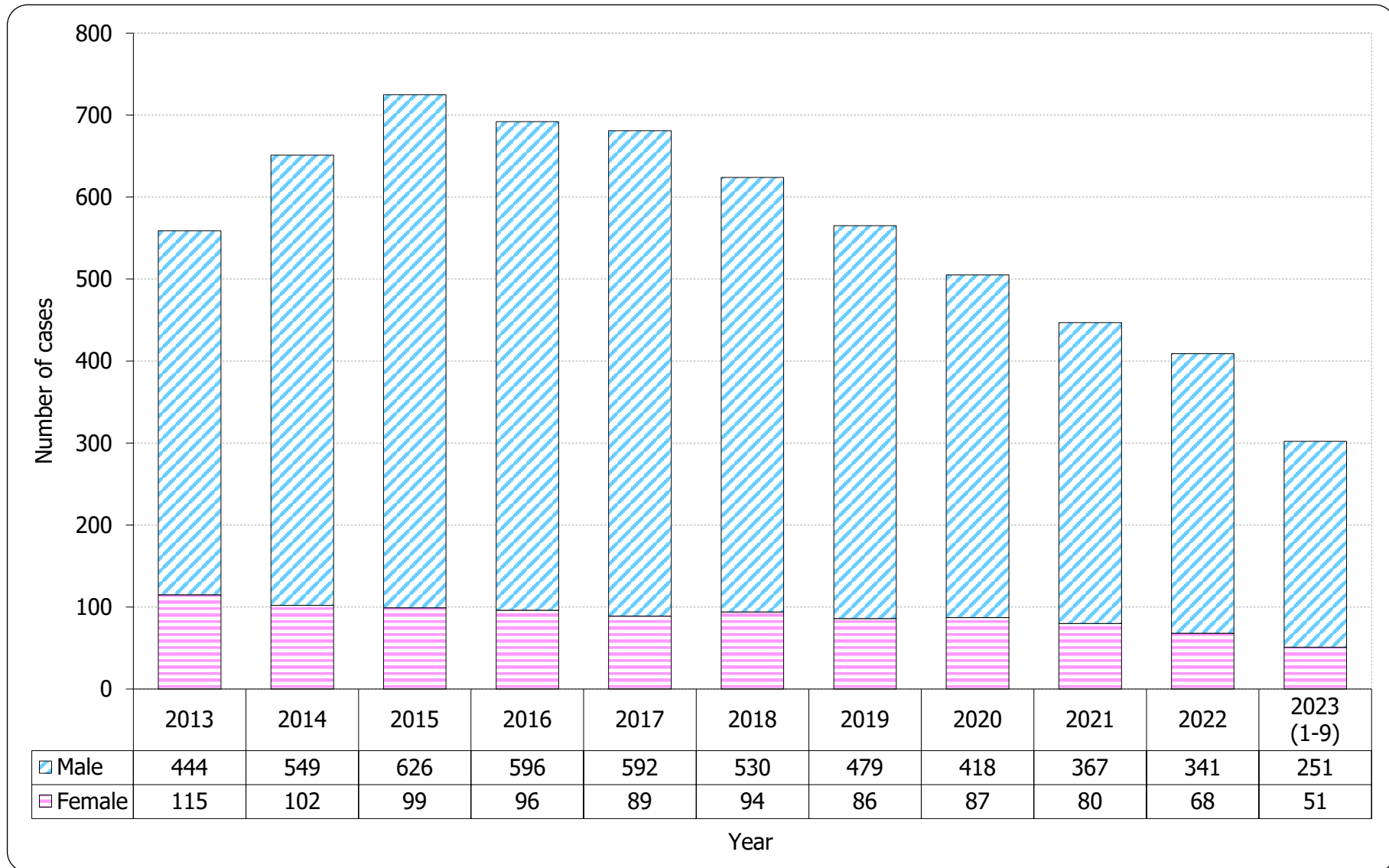


Table 2.2 Gender distribution of reported AIDS

	This quarter (Jul - Sep 2023)	Last quarter (Apr - Jun 2023)	Same quarter last year (Jul - Sep 2022)	Cumulative (1984 – Sep 2023)
Male	23	19	9	2,045
Female	5	5	3	424
Total	28	24	12	2,469

Chart 2.3 Gender distribution of reported AIDS by quarter

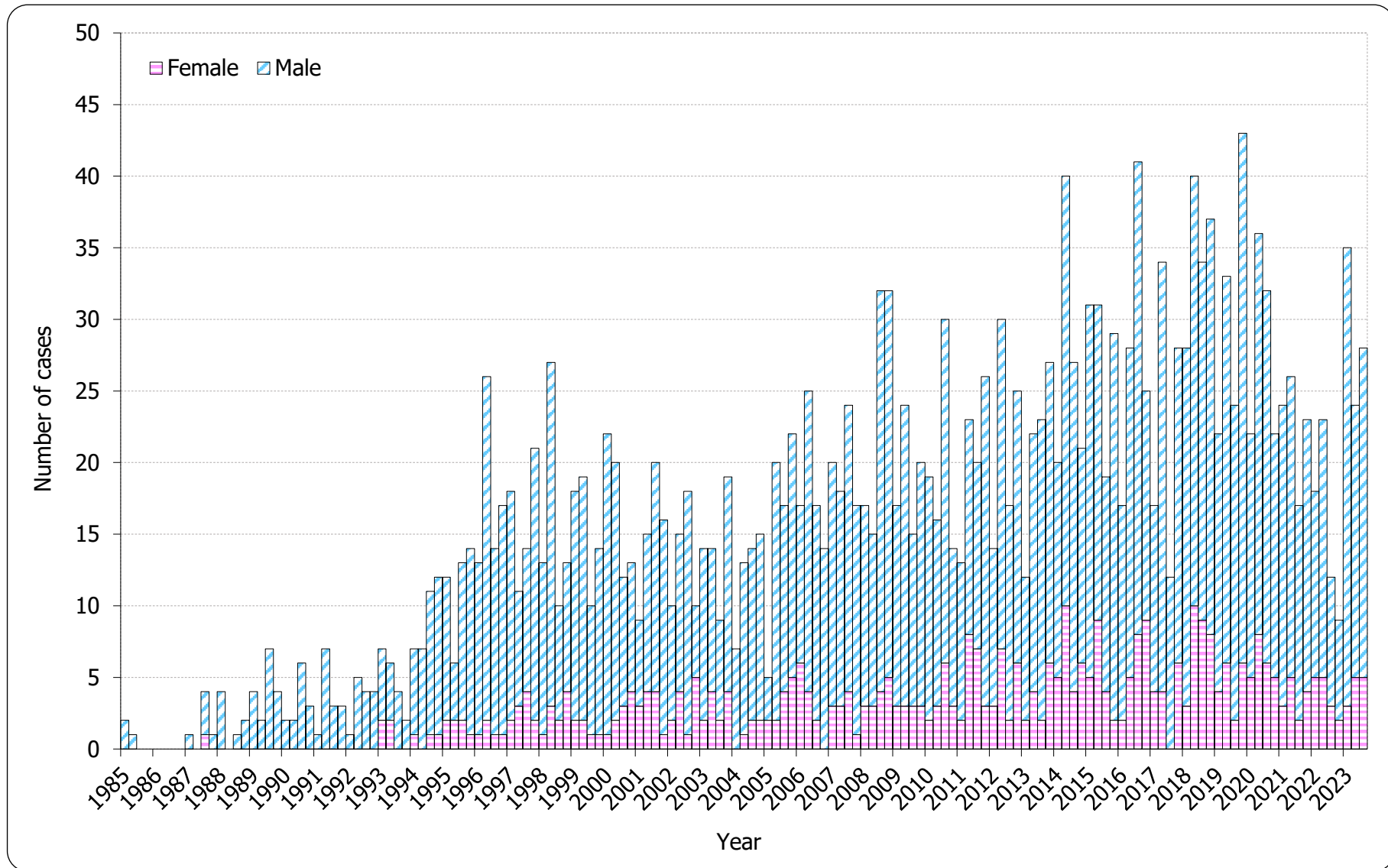
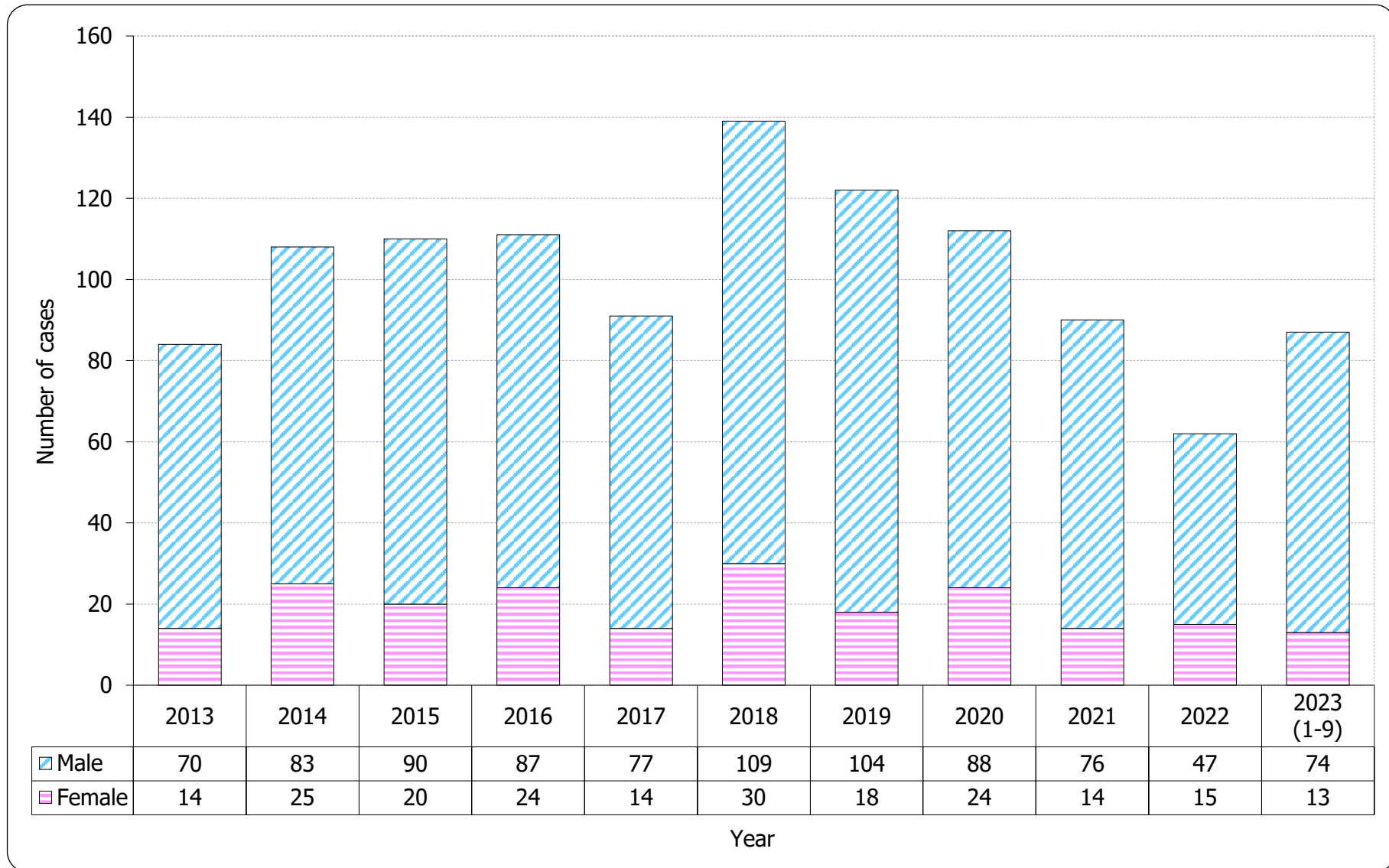


Chart 2.4 Gender distribution of reported AIDS by year



3. Ethnicity of reported HIV/AIDS

Table 3.1 Distribution of ethnicity of reported HIV

	This quarter (Jul - Sep 2023)	Last quarter (Apr - Jun 2023)	Same quarter last year (Jul - Sep 2022)	Cumulative (1984 – Sep 2023)
Chinese	73	71	63	8,323
Non-Chinese	20	12	17	3,198
<i>Asian</i>	<i>11</i>	<i>10</i>	<i>10</i>	<i>1,664</i>
<i>White</i>	<i>4</i>	<i>0</i>	<i>3</i>	<i>665</i>
<i>Black</i>	<i>4</i>	<i>2</i>	<i>2</i>	<i>282</i>
<i>Others</i>	<i>1</i>	<i>0</i>	<i>2</i>	<i>587</i>
Unknown	20	10	17	422
Total	113	93	97	11,943

Chart 3.1 Distribution of ethnicity of reported HIV

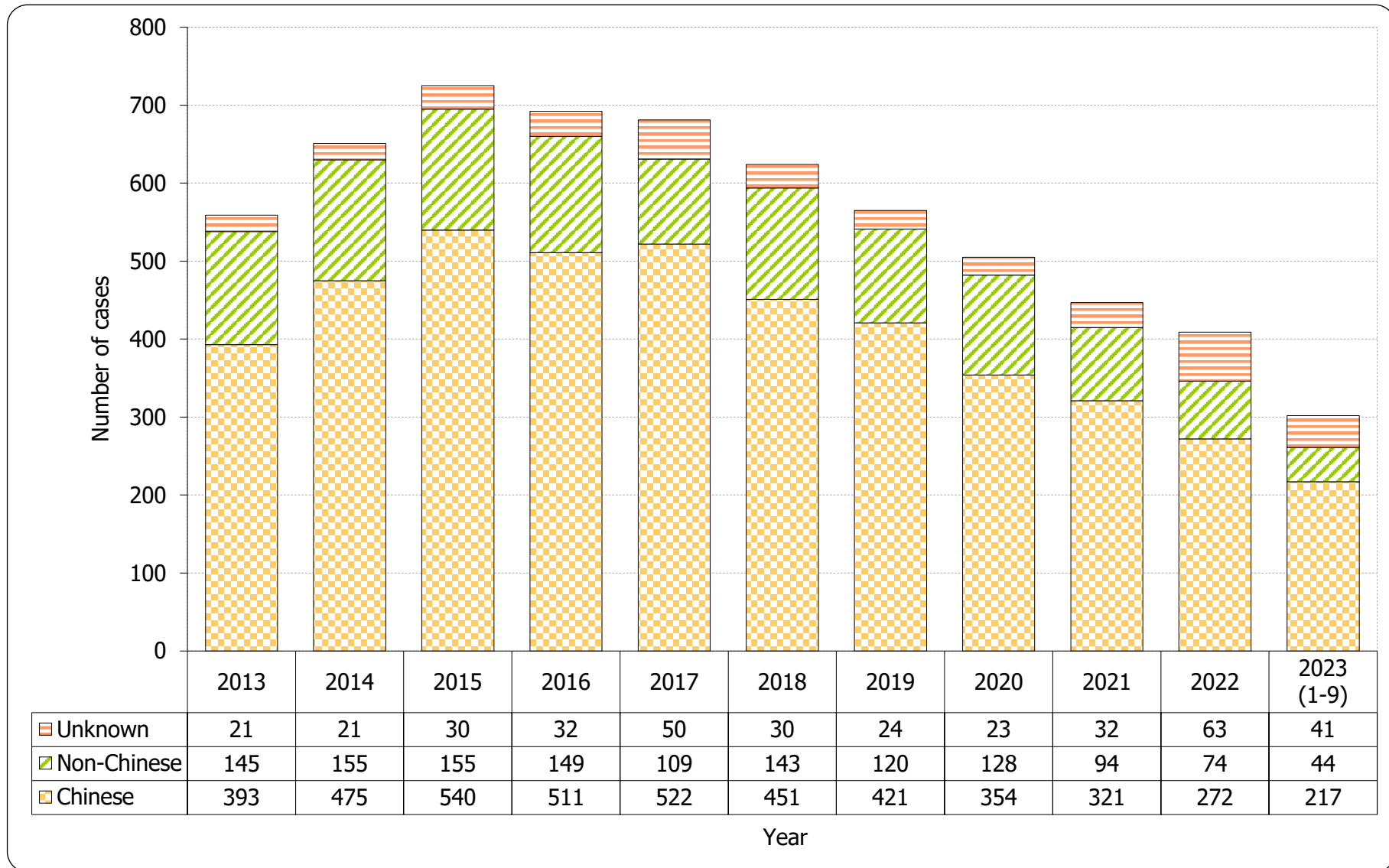
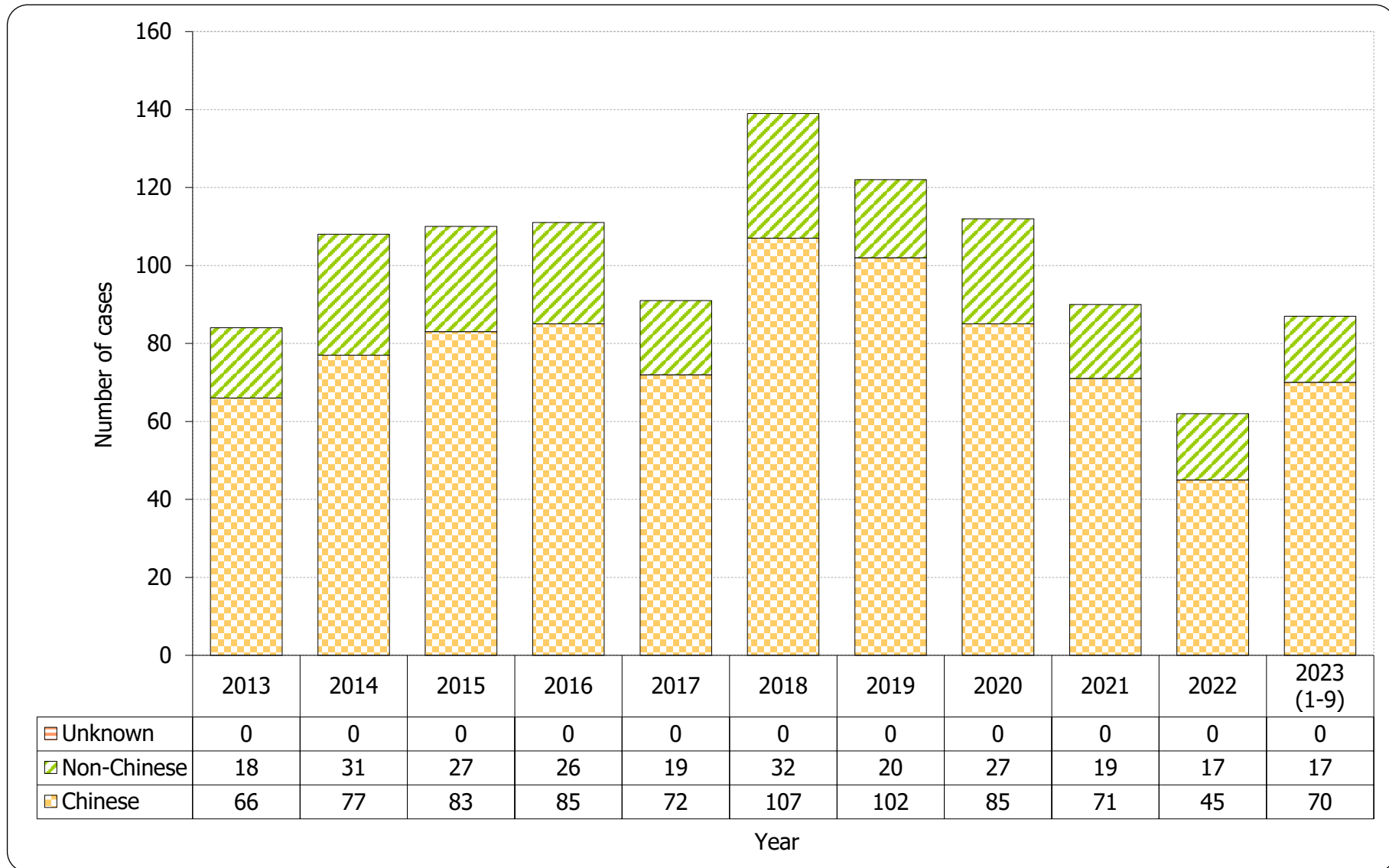


Table 3.2 Distribution of ethnicity of reported AIDS

	This quarter (Jul - Sep 2023)	Last quarter (Apr - Jun 2023)	Same quarter last year (Jul - Sep 2022)	Cumulative (1984 – Sep 2023)
Chinese	22	19	9	1,907
Non-Chinese	6	5	3	562
<i>Asian</i>	5	4	3	400
<i>White</i>	1	0	0	107
<i>Black</i>	0	1	0	46
<i>Others</i>	0	0	0	9
Unknown	0	0	0	0
Total	28	24	12	2,469

Chart 3.2 Distribution of ethnicity of reported AIDS



4. Age distribution of reported HIV/AIDS

Table 4.1 Age distribution of reported HIV

	This quarter (Jul - Sep 2023)	Last quarter (Apr - Jun 2023)	Same quarter last year (Jul - Sep 2022)	Cumulative (1984 – Sep 2023)
Adult	112	93	97	11,887
Child (age 13 or less)	1	0	0	56
Total	113	93	97	11,943

Chart 4.1 Age distribution of reported HIV

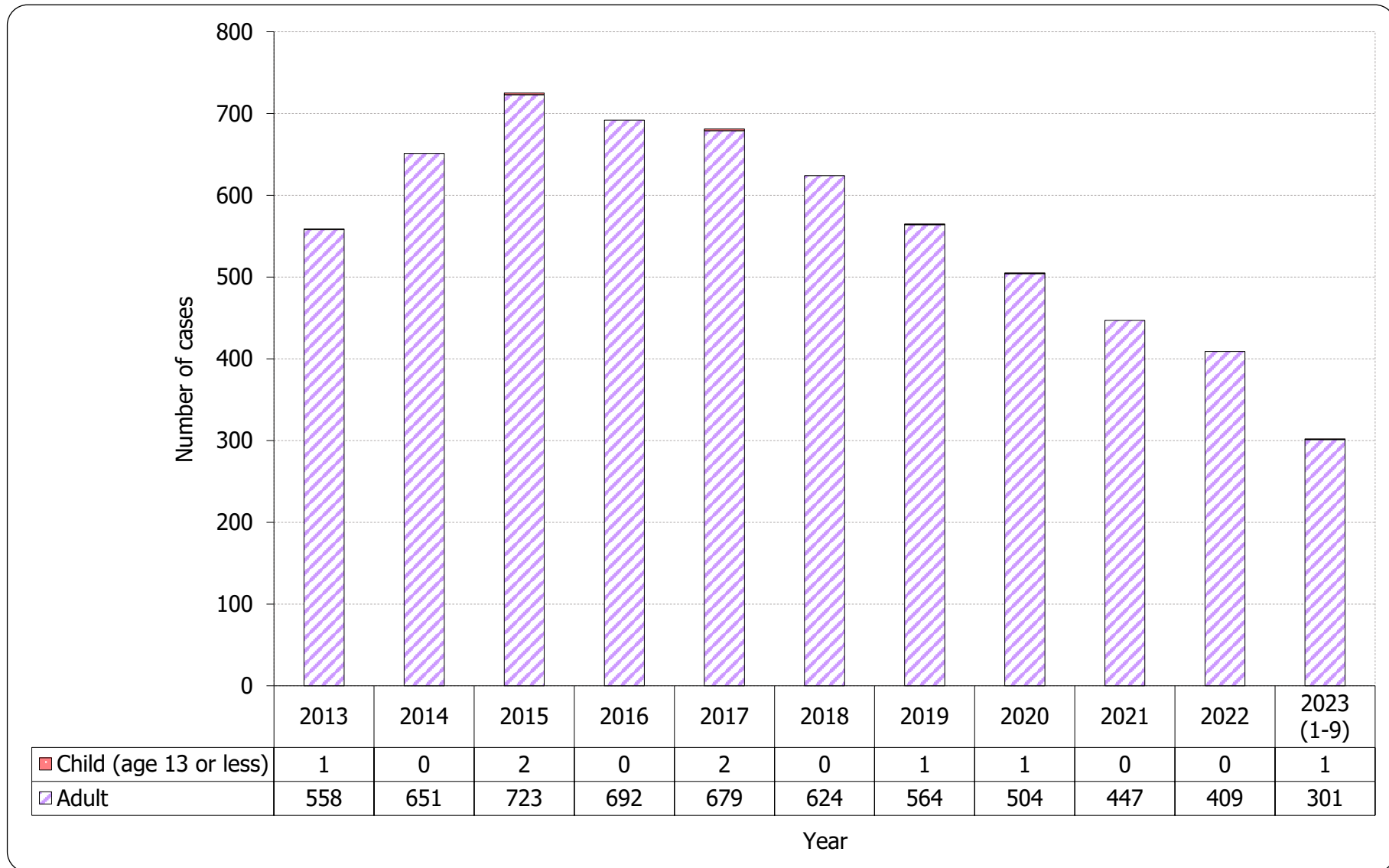


Chart 4.2 Age group & gender of total reported HIV

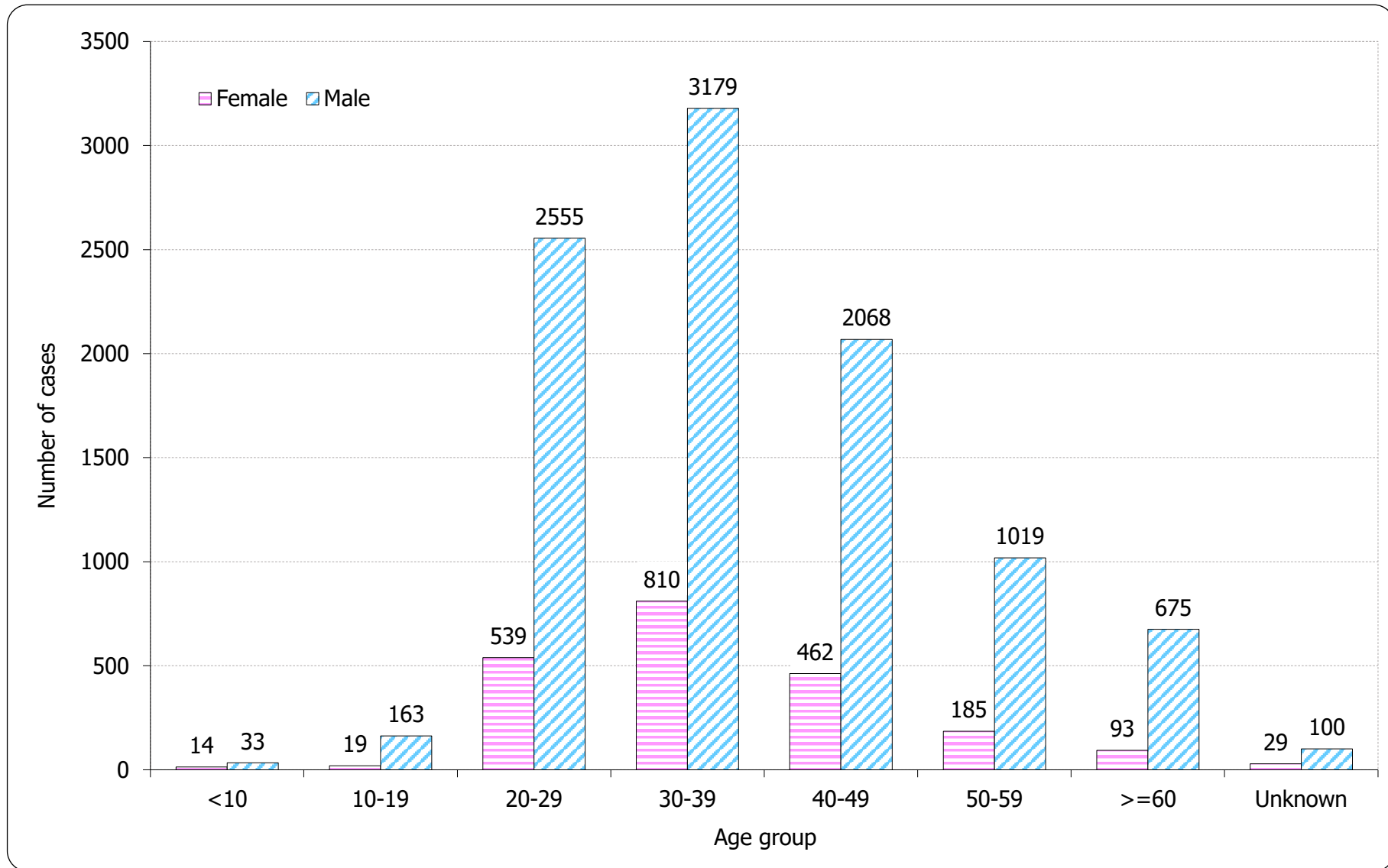


Table 4.2 Age distribution of reported AIDS

	This quarter (Jul - Sep 2023)	Last quarter (Apr - Jun 2023)	Same quarter last year (Jul - Sep 2022)	Cumulative (1984 – Sep 2023)
Adult	28	24	12	2,455
Child (age 13 or less)	0	0	0	14
Total	28	24	12	2,469

Chart 4.3 Age distribution of reported AIDS

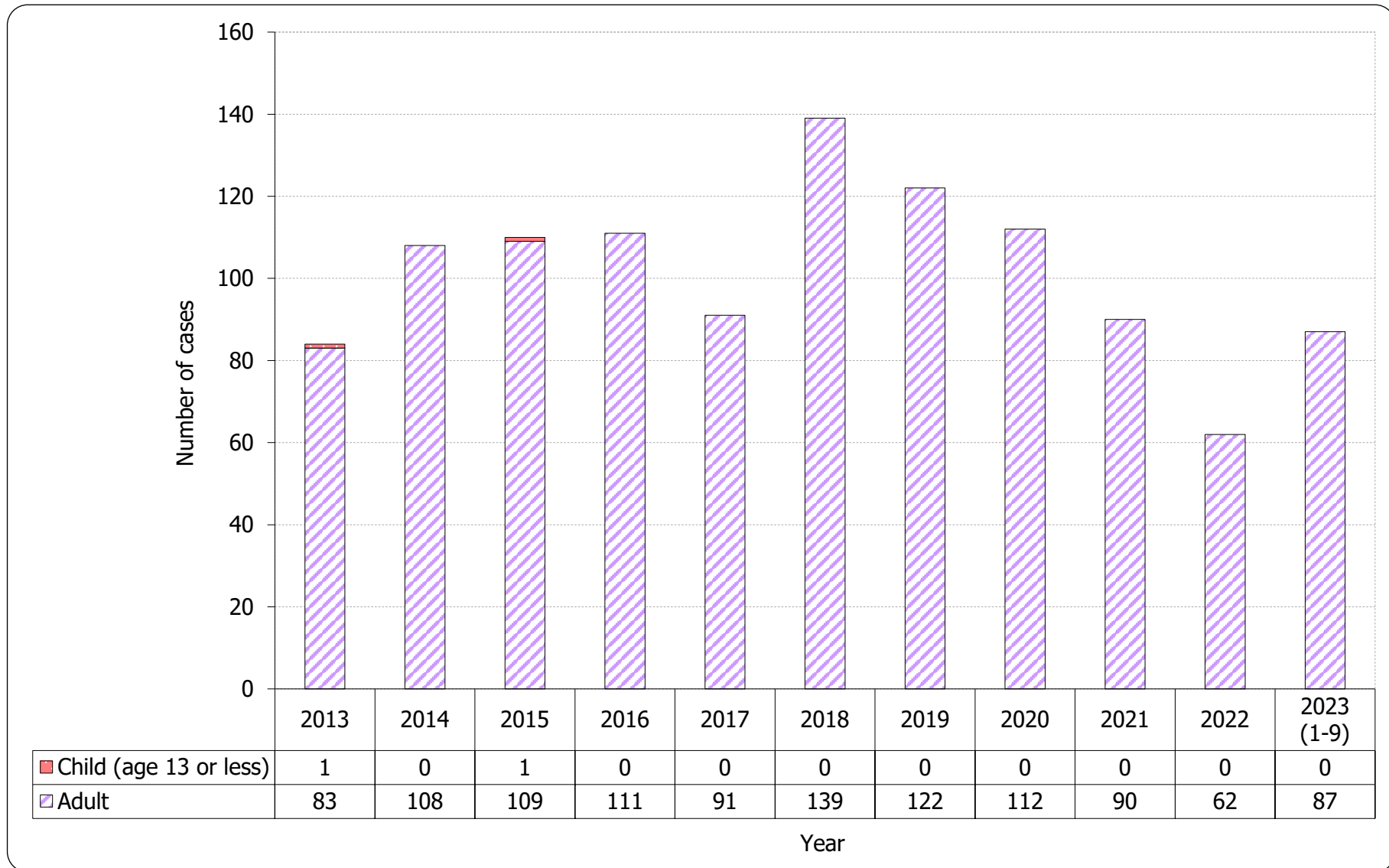
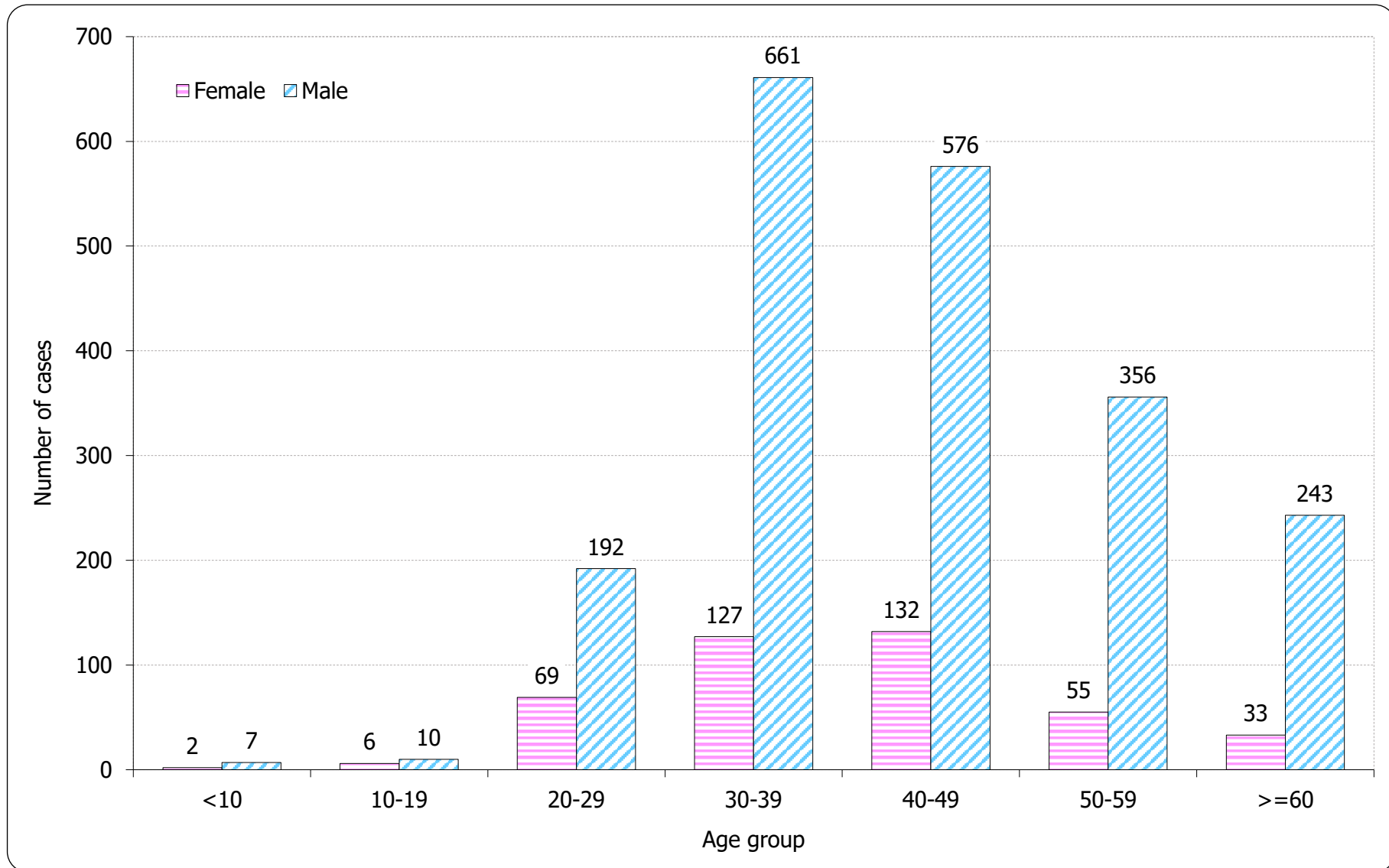


Chart 4.4 Age group & gender of total reported AIDS

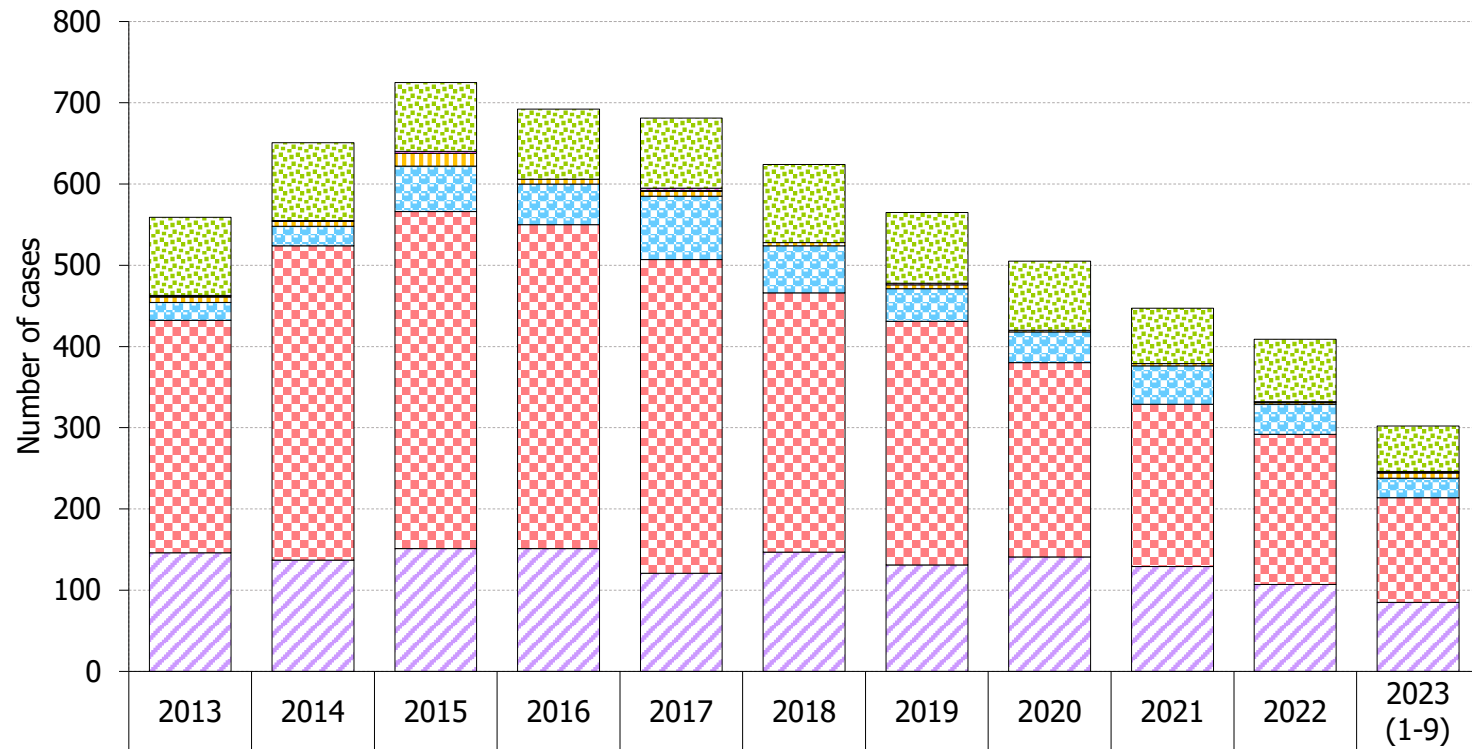


5. Exposure categories of reported HIV/AIDS

Table 5.1 Exposure categories of reported HIV

	This quarter (Jul - Sep 2023)	Last quarter (Apr - Jun 2023)	Same quarter last year (Jul - Sep 2022)	Cumulative (1984 – Sep 2023)
Heterosexual	29	34	28	3,832
Homosexual	43	31	41	4,989
Bisexual	9	10	7	712
Injecting drug use	1	3	2	381
Blood / blood product infusion	0	0	0	87
Mother-to-child transmission	1	0	0	36
Undetermined	30	15	19	1,906
Total	113	93	97	11,943

Chart 5.1 Exposure categories of reported HIV



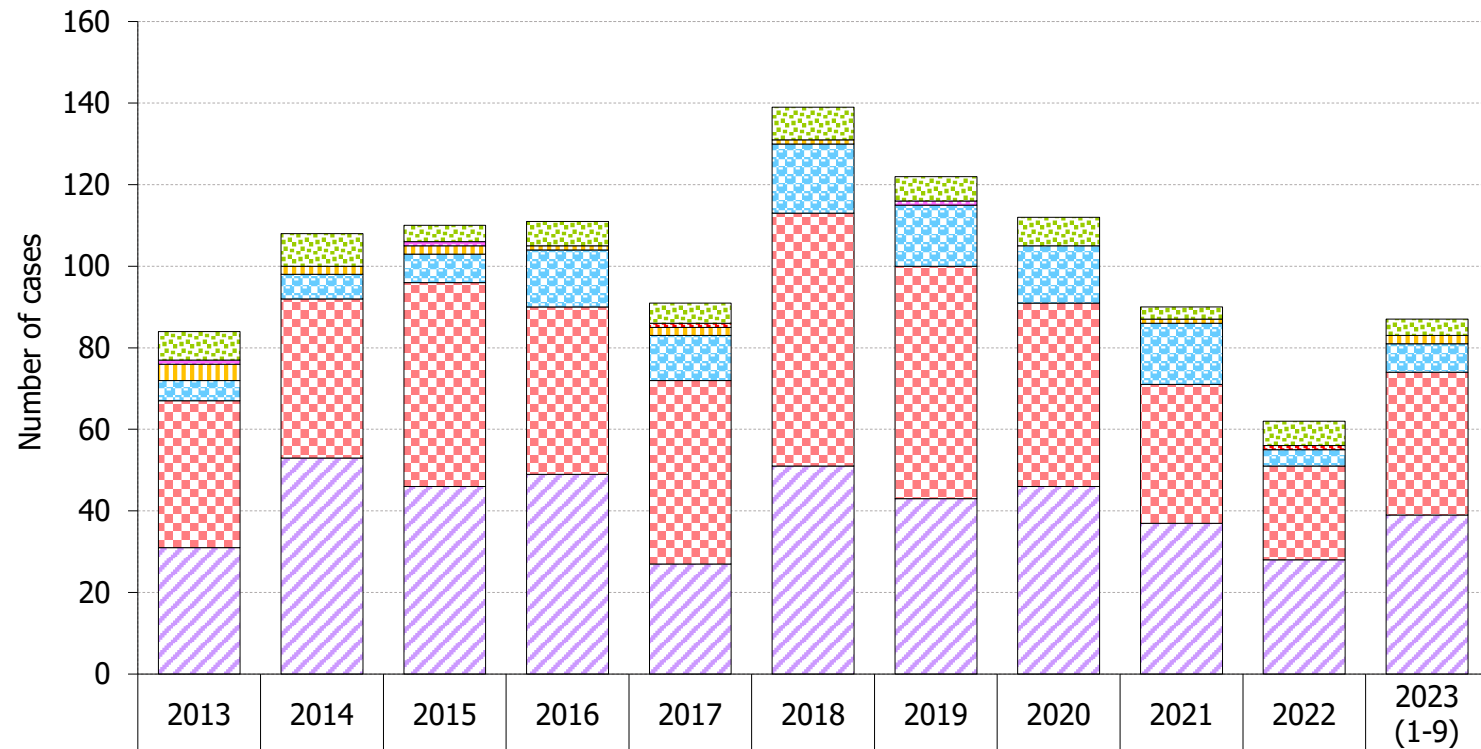
	2013	2014	2015	2016	2017	2018	2019	2020	2021	2022	2023 (1-9)
Undetermined	96	96	85	86	86	96	87	85	68	77	56
Mother-to-child transmission	1	0	2	0	3	0	2	0	0	0	1
Blood contact	1	1	0	0	1	0	0	0	0	1	1
Injecting drug use	7	6	16	6	6	4	5	2	3	2	6
Bisexual	22	24	56	50	78	58	40	38	47	37	24
Homosexual	286	387	415	399	386	319	300	239	200	185	129
Heterosexual	146	137	151	151	121	147	131	141	129	107	85

Year

Table 5.2 Exposure categories of reported AIDS

	This quarter (Jul - Sep 2023)	Last quarter (Apr - Jun 2023)	Same quarter last year (Jul - Sep 2022)	Cumulative (1984 – Sep 2023)
Heterosexual	13	11	7	1,241
Homosexual	9	9	4	787
Bisexual	3	2	0	171
Injecting drug use	0	1	0	70
Blood / blood product infusion	0	0	0	26
Mother-to-child transmission	0	0	0	11
Undetermined	3	1	1	163
Total	28	24	12	2,469

Chart 5.2 Exposure categories of reported AIDS



	2013	2014	2015	2016	2017	2018	2019	2020	2021	2022	2023 (1-9)
Undetermined	7	8	4	6	5	8	6	7	3	6	4
Mother-to-child transmission	1	0	1	0	0	0	1	0	0	0	0
Blood contact	0	0	0	0	1	0	0	0	0	1	0
Injecting drug use	4	2	2	1	2	1	0	0	1	0	2
Bisexual	5	6	7	14	11	17	15	14	15	4	7
Homosexual	36	39	50	41	45	62	57	45	34	23	35
Heterosexual	31	53	46	49	27	51	43	46	37	28	39

Year

6. Ratio (heterosexual : homosexual / bisexual) of sexually acquired HIV infection in men

Table 6.1 Ratio of sexually acquired infection in men with reported HIV/AIDS (heterosexual : homo / bisexual) by quarter

	This quarter (Jul - Sep 2023)	Last quarter (Apr - Jun 2023)	Same quarter last year (Jul - Sep 2022)	Cumulative (1984 – Sep 2023)
HIV	0.3 : 1	0.4 : 1	0.3 : 1	0.4 : 1
AIDS	0.8 : 1	0.5 : 1	1.0 : 1	0.9 : 1

Table 6.2 Ratio of sexually acquired infection in men with reported HIV/AIDS (heterosexual : homo / bisexual) by year

	2013	2014	2015	2016	2017	2018	2019	2020	2021	2022	2023 (1-9)	1984 – Sep 2023
HIV	0.2 : 1	0.2 : 1	0.2 : 1	0.2 : 1	0.1 : 1	0.2 : 1	0.2 : 1	0.3 : 1	0.3 : 1	0.3 : 1	0.3 : 1	0.4 : 1
AIDS	0.4 : 1	0.7 : 1	0.5 : 1	0.5 : 1	0.3 : 1	0.3 : 1	0.4 : 1	0.4 : 1	0.5 : 1	0.6 : 1	0.6 : 1	0.9 : 1

7. Injecting drug users in reported HIV/AIDS

Table 7.1 Injecting drug users in reported HIV/AIDS

	This quarter (Jul - Sep 2023)	Last quarter (Apr - Jun 2023)	Same quarter last year (Jul - Sep 2022)	Cumulative (1984 – Sep 2023)
HIV (% of reported HIV)	1 0.9%	3 3.2%	2 2.1%	381 3.2%
AIDS (% of reported AIDS)	0 0.0%	1 4.2%	0 0.0%	70 2.8%

Table 7.2 Number of injecting drug user in reported HIV/AIDS by year

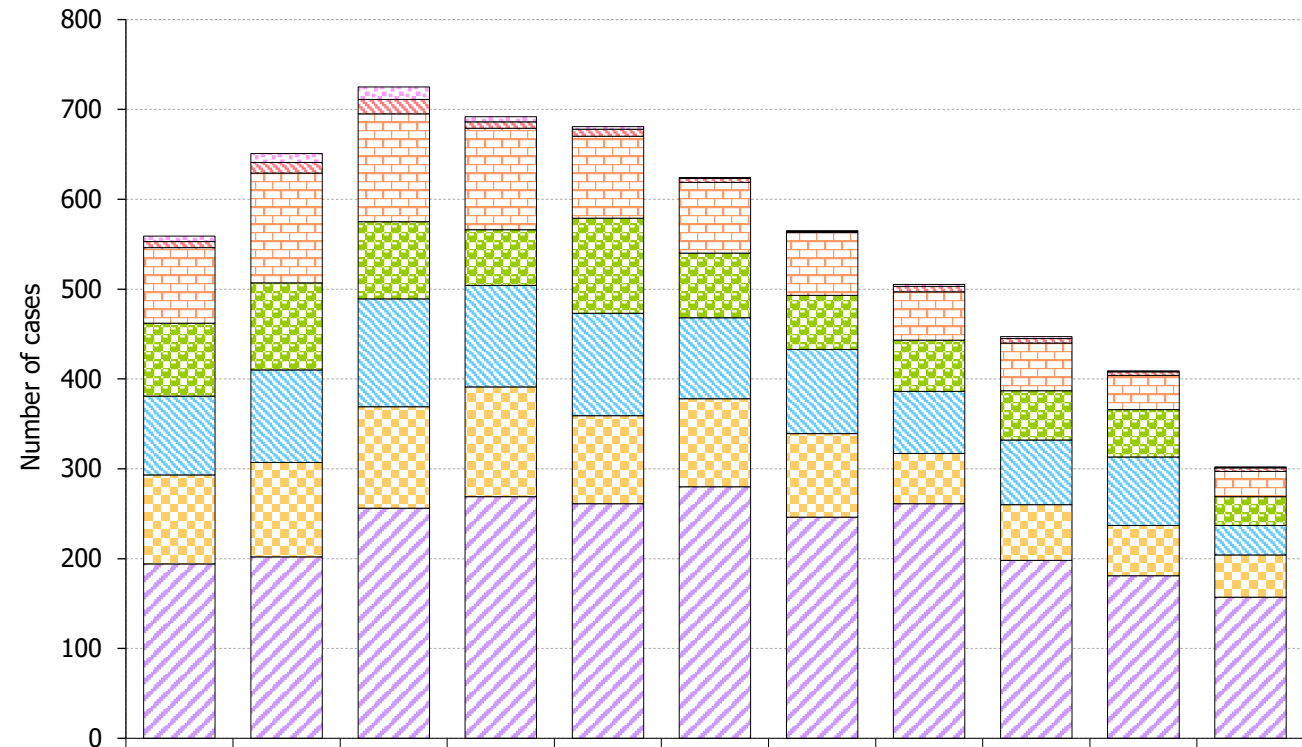
	2013	2014	2015	2016	2017	2018	2019	2020	2021	2022	2023 (1-9)	1984 – Sep 2023
HIV (% of reported HIV)	7 (1.3%)	6 (0.9%)	16 (2.2%)	6 (0.9%)	6 (0.9%)	4 (0.6%)	5 (0.9%)	2 (0.4%)	3 (0.7%)	2 (0.5%)	6 (2.0%)	381 (3.2%)
AIDS (% of reported AIDS)	4 (4.8%)	2 (1.9%)	2 (1.8%)	1 (0.9%)	2 (2.2%)	1 (0.7%)	0 (0.0%)	0 (0.0%)	1 (1.1%)	0 (0.0%)	2 (2.3%)	70 (2.8%)

8. Source of referral of reported HIV/AIDS

Table 8.1 Source of referral of reported HIV

	This quarter (Jul - Sep 2023)	Last quarter (Apr - Jun 2023)	Same quarter last year (Jul - Sep 2022)	Cumulative (1984 – Sep 2023)
Public hospitals / clinics / laboratories	61	47	39	4,977
Private hospitals / clinics / laboratories	21	12	13	2,251
Social Hygiene Clinics	13	11	18	1,733
DH AIDS Unit	9	11	14	1,501
AIDS service organisations (NGOs)	7	10	11	1,160
Hong Kong Red Cross Blood Transfusion Service	2	1	1	184
Drug rehabilitation services	0	1	1	137
Total	113	93	97	11,943

Chart 8.1 Source of referral of reported HIV



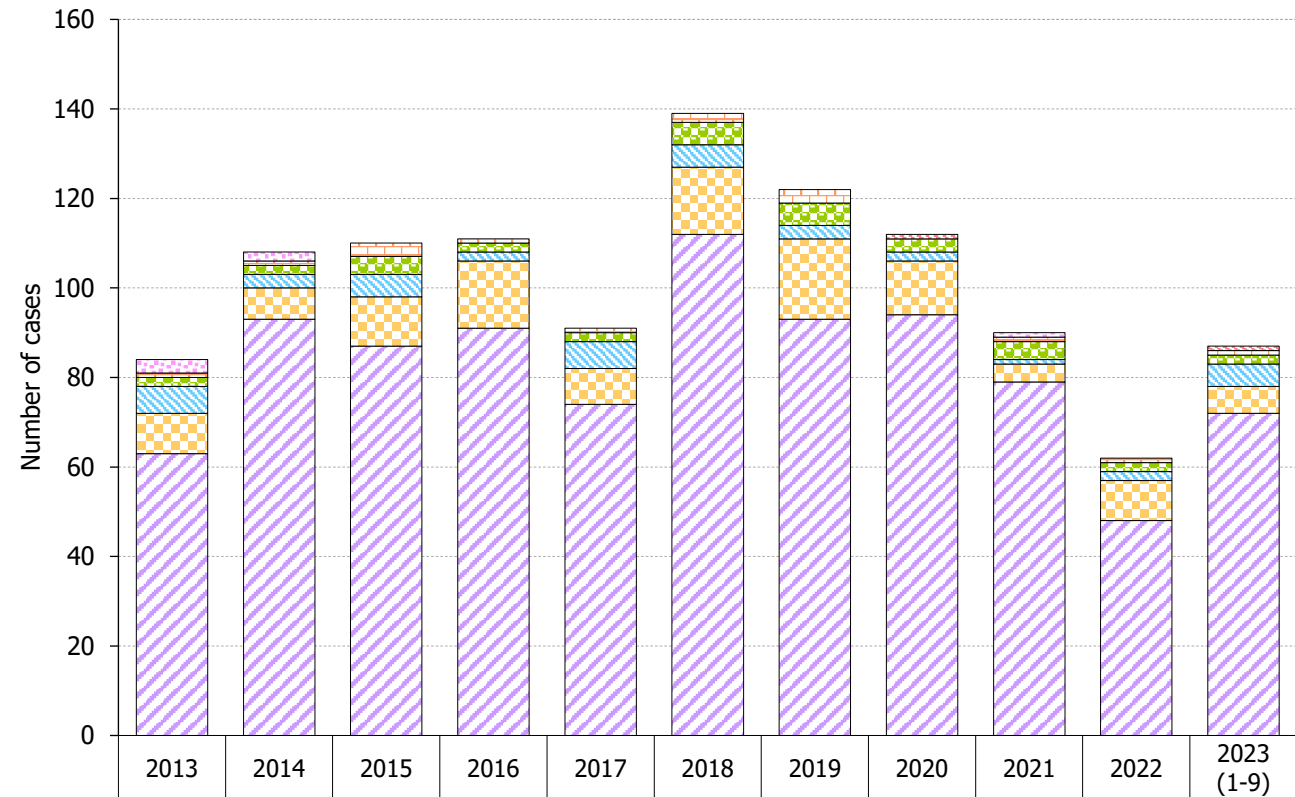
	2013	2014	2015	2016	2017	2018	2019	2020	2021	2022	2023 (1-9)
Drug rehabilitation services	6	10	14	6	3	1	1	2	2	1	1
Hong Kong Red Cross Blood Transfusion Service	7	12	16	7	8	4	1	6	5	4	4
AIDS service organisations (NGOs)	84	122	120	113	91	79	70	54	53	38	28
DH AIDS Unit	81	97	86	62	106	72	60	57	55	53	32
Social Hygiene Clinics	88	103	120	113	114	90	94	69	72	76	33
Private hospitals / clinics / laboratories	99	105	113	122	98	98	93	56	62	56	47
Public hospitals / clinics / laboratories	194	202	256	269	261	280	246	261	198	181	157

Year

Table 8.2 Source of referral of reported AIDS

	This quarter (Jul - Sep 2023)	Last quarter (Apr - Jun 2023)	Same quarter last year (Jul - Sep 2022)	Cumulative (1984 – Sep 2023)
Public hospitals / clinics / laboratories	24	18	8	1,916
Private hospitals / clinics / laboratories	2	2	1	306
Social Hygiene Clinics	1	2	2	86
DH AIDS Unit	1	0	1	122
AIDS service organisations (NGOs)	0	1	0	21
Hong Kong Red Cross Blood Transfusion Service	0	1	0	11
Drug rehabilitation services	0	0	0	7
Total	28	24	12	2,469

Chart 8.2 Source of referral of Reported AIDS



	2013	2014	2015	2016	2017	2018	2019	2020	2021	2022	2023 (1-9)
Drug rehabilitation services	3	2	0	0	0	0	0	0	1	0	0
Hong Kong Red Cross Blood Transfusion Service	0	0	0	0	0	0	0	1	0	0	1
AIDS service organisations (NGOs)	1	1	3	1	1	2	3	0	1	1	1
DH AIDS Unit	2	2	4	2	2	5	5	3	4	2	2
Social Hygiene Clinics	6	3	5	2	6	5	3	2	1	2	5
Private hospitals / clinics / laboratories	9	7	11	15	8	15	18	12	4	9	6
Public hospitals / clinics / laboratories	63	93	87	91	74	112	93	94	79	48	72

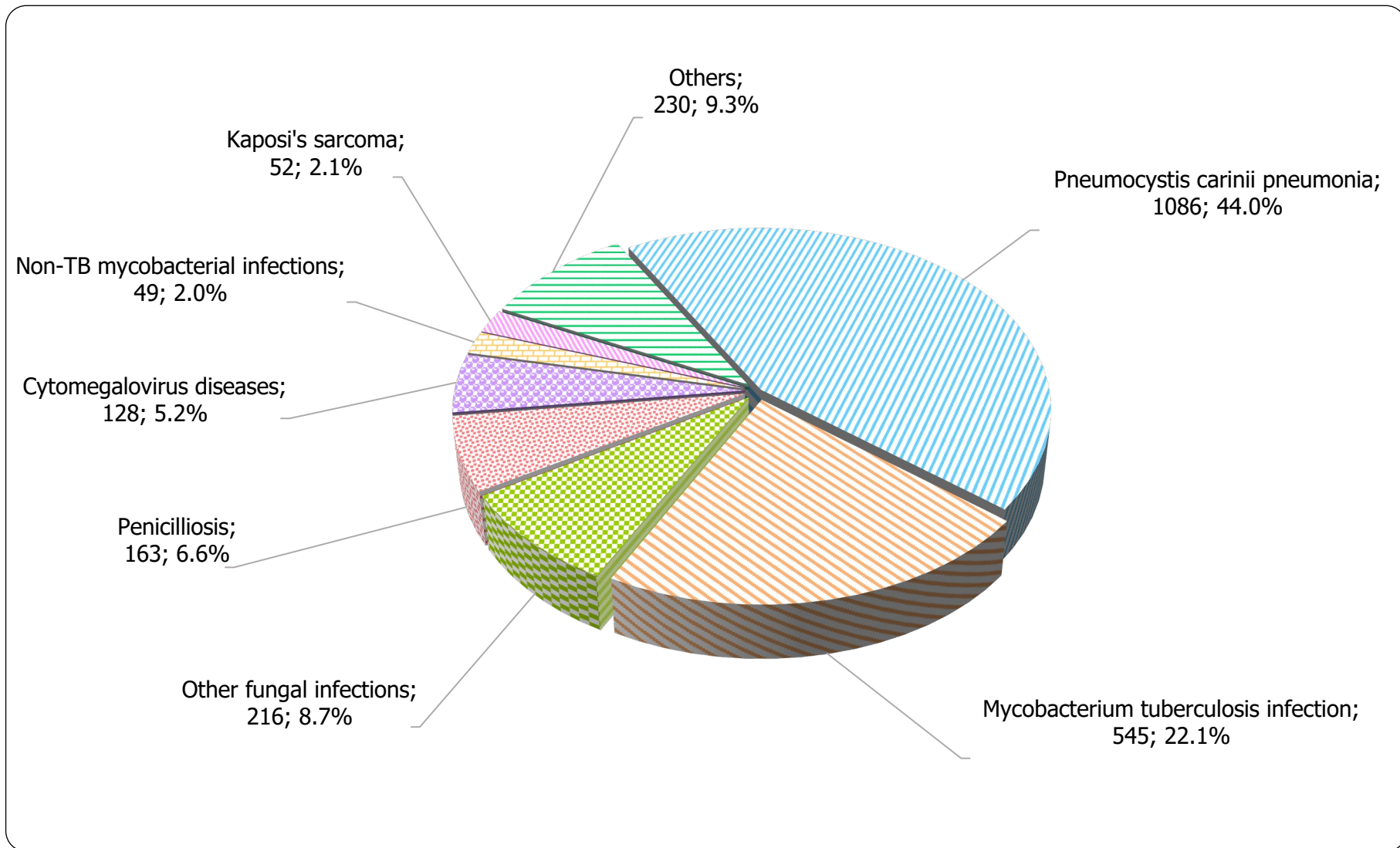
Year

9. Distribution of AIDS defining illnesses

Table 9.1 Distribution of AIDS defining illness of reported AIDS

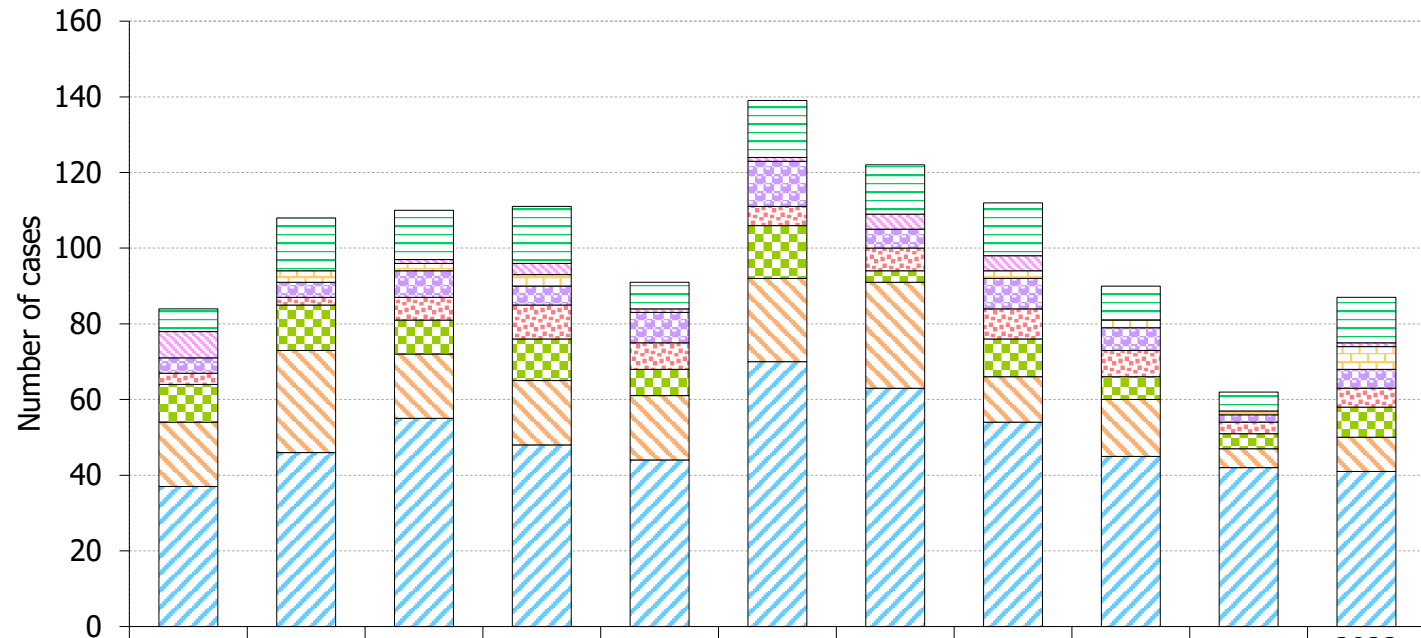
	This quarter (Jul - Sep 2023)	Last quarter (Apr - Jun 2023)	Same quarter last year (Jul - Sep 2022)	Cumulative (1984 – Sep 2023)
<i>Pneumocystis carinii pneumonia</i>	15	8	5	1,086
<i>Mycobacterium tuberculosis</i>	1	4	3	545
Other fungal infections	3	3	0	216
Penicilliosis	1	3	1	163
Cytomegalovirus diseases	1	0	0	128
Non-TB mycobacterial infections	2	2	1	49
Kaposi's sarcoma	0	0	0	52
Others	5	4	2	230
Total	28	24	12	2,469

Chart 9.1 AIDS defining illness of total reported AIDS



Format: [ADI; Number; %]

Chart 9.2 AIDS defining illness of reported AIDS by year



	2013	2014	2015	2016	2017	2018	2019	2020	2021	2022	2023 (1-9)
Others	6	14	13	15	7	15	13	14	9	5	12
Kaposi's sarcoma	7	0	1	3	1	1	4	4	0	0	1
Non-TB mycobacterial infections	0	3	2	3	0	0	0	2	2	1	6
Cytomegalovirus diseases	4	4	7	5	8	12	5	8	6	2	5
Penicilliosis	3	2	6	9	7	5	6	8	7	3	5
Other fungal infections	10	12	9	11	7	14	3	10	6	4	8
Tuberculosis	17	27	17	17	17	22	28	12	15	5	9
Pneumocystis carinii pneumonia	37	46	55	48	44	70	63	54	45	42	41

Year

10. Reported sexually transmitted infections (STIs) diagnosed in Social Hygiene Service

Table 10.1 Summary table on the reported STIs diagnosed in Social Hygiene Service

	This quarter (Jul - Sep 2023)	Last quarter (Apr - Jun 2023)	Same quarter last year (Jul - Sep 2022)	In year 2022
Syphilis				
<i>Primary</i>	23	16	17	71
<i>Secondary</i>	55	52	54	197
<i>Early latent</i>	47	56	70	212
<i>Late latent</i>	138	123	132	428
<i>Late (cardiovascular / neuro / ocular)</i>	1	2	3	5
<i>Congenital (early)</i>	0	0	0	0
<i>Congenital (late)</i>	0	0	0	0
<i>Others *</i>	5	2	10	10 [#]
Syphilis total	269	251	286	923

(to be cont'd)

Table 10.1 (cont'd)

	This quarter (Jul - Sep 2023)	Last quarter (Apr - Jun 2023)	Same quarter last year (Jul - Sep 2022)	In year 2022
Gonorrhoea	384	378	403	1,482
Non-gonococcal urethritis (Male)	274	291	694	2,279
Non-specific genital infection (Female)	316	257	449	1,580
Chlamydia trachomatis *	491	415	134	538 #
Genital wart	309	250	305	1,111
Herpes genitalis	118	100	128	453
Pediculosis pubis	44	37	15	80
Trichomonas	54	37	62	192
Genital ulcer	75	24	1	3
Mycoplasma genitalium *	20	11	3	12 #
Chancroid / Lymphogranuloma venereum	0	1	0	0
Others	102	50	118	537
Total	2,456	2,102	2,598	9,190

* Added as a new category since 2022 Q3

Figures for 2022 Q3 to 2022 Q4 only

11. Gender distribution of reported STIs

Table 11.1 Gender distribution of selected STI reported by Social Hygiene Service

	This quarter (Jul - Sep 2023)	Last quarter (Apr - Jun 2023)	Same quarter last year (Jul - Sep 2022)	In year 2022
Primary Syphilis				
Male (M)	23	16	17	69
Female (F)	0	0	0	2
M : F	N.A.	N.A.	N.A.	34.5 : 1
Gonorrhoea				
Male (M)	334	343	348	1,297
Female (F)	50	35	55	185
M : F	6.7 : 1	9.8 : 1	6.3 : 1	7.0 : 1
NGU / NSGI *				
Male (M)	274	291	694	1,053 #
Female (F)	316	257	449	812 #
M : F	0.9 : 1	1.1 : 1	1.5 : 1	1.3 : 1 #

(to be cont'd)

Table 11.1 (cont'd)

	This quarter (Jul - Sep 2023)	Last quarter (Apr - Jun 2023)	Same quarter last year (Jul - Sep 2022)	In year 2022
CT *				
Male (M)	338	298	108	428 #
Female (F)	153	117	26	110 #
M : F	2.2 : 1	2.5 : 1	4.2 : 1	3.9 : 1 #
Genital wart				
Male (M)	252	193	245	863
Female (F)	57	57	60	248
M : F	4.4 : 1	3.4 : 1	4.1 : 1	3.5 : 1
<i>Herpes genitalis</i>				
Male (M)	80	77	72	269
Female (F)	38	23	56	184
M : F	2.1 : 1	3.3 : 1	1.3 : 1	1.5 : 1

* NGU = Non-gonococcal urethritis

NSGI = Non-specific genital infection

CT = Chlamydia trachomatis

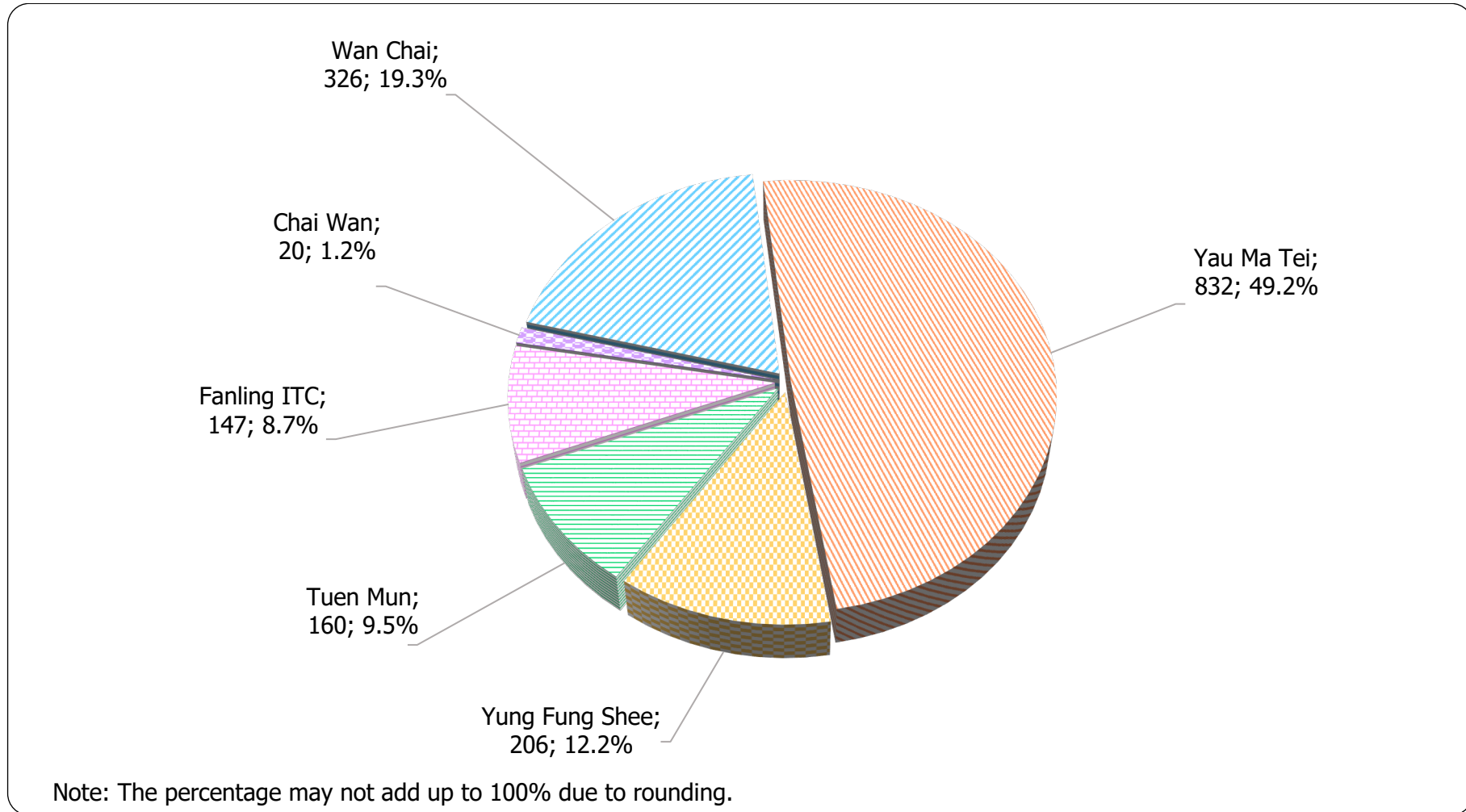
Figures for 2022 Q3 to 2022 Q4 only

Table 11.2 Gender distribution of reported STI by clinic

	This quarter (Jul - Sep 2023)		Last quarter (Apr - Jun 2023)		Same quarter last year (Jul - Sep 2022)		In year 2022	
	Male	Female	Male	Female	Male	Female	Male	Female
Chai Wan	20	10	0	0	0	0	0	0
Wan Chai	326	176	302	198	317	449	1,203	1,544
Yau Ma Tei	832	339	789	200	958	0	3,242	29
Yung Fung Shee	206	76	134	80	208	137	667	528
Tuen Mun	160	79	127	58	125	117	485	438
Fanling ITC	147	85	144	70	142	145	546	508
Total	1,691	765	1,496	606	1,750	848	6,143	3,047

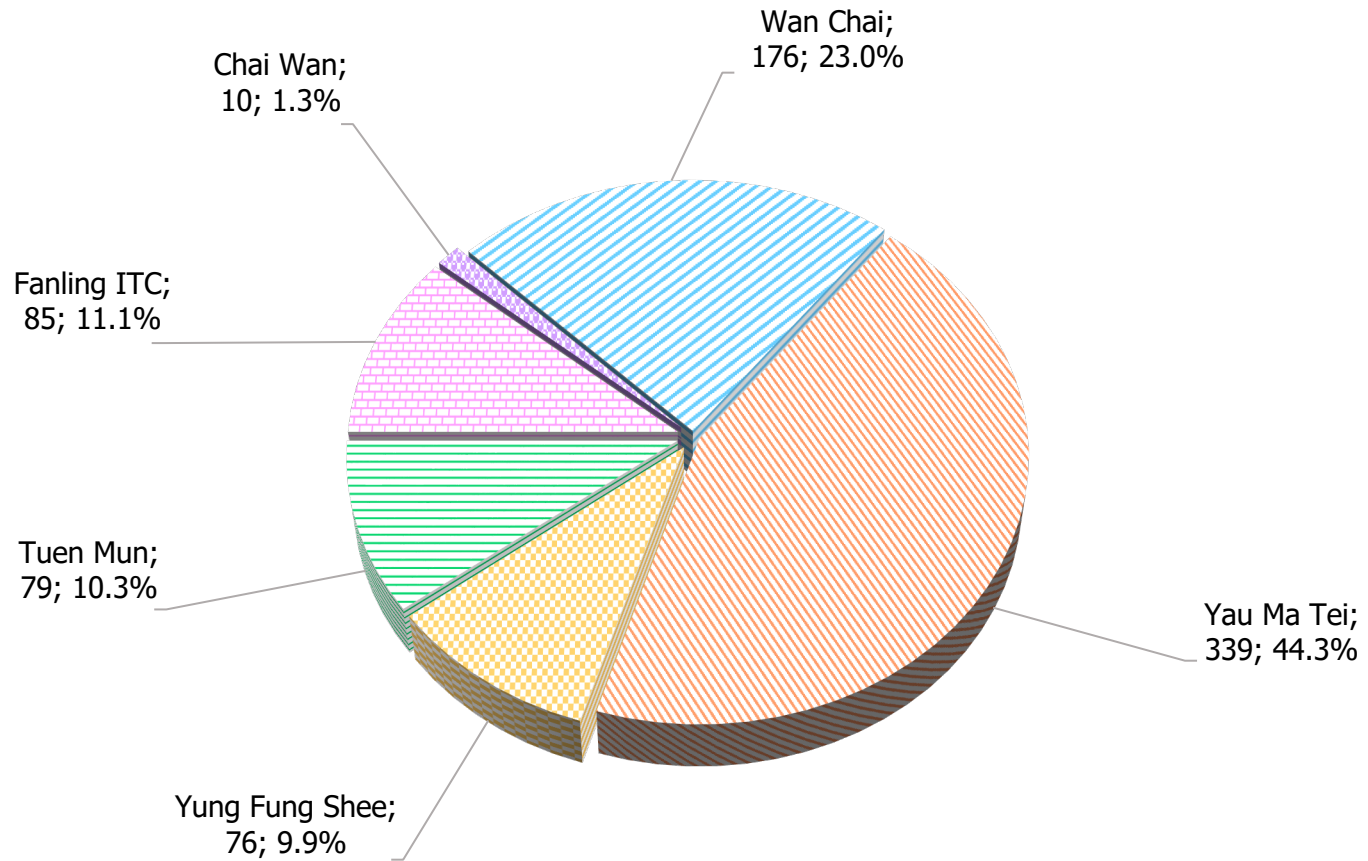
12. Clinic distribution

Chart 12.1 Number of newly report STI in Q3 2023 by clinic (male clients)



Format: [Clinic; Number; %]

Chart 12.2 Number of newly report STI in Q3 2023 by clinic (female clients)



Note: The percentage may not add up to 100% due to rounding.

Format: [Clinic; Number; %]