



The Hong Kong STD/AIDS update is a composite report on HIV/AIDS reporting and STI caseload statistics published three monthly. The current issue has the updated information up to December 2023.

**SPP Surveillance Team:**

*Dr. Annie LO*

*Ms. Shirry WAN*

**Correspondence to:**

*Special Preventive Programme,*

*Centre for Health Protection, Department of Health*

*c/o Red Ribbon Centre, 2/F Wang Tau Hom Jockey Club Clinic,*

*200 Junction Road East, Kowloon, Hong Kong*

*Telephone: (852) 3143 7200 Facsimile: (852) 2338 0534*

*E-mail: [aids@dh.gov.hk](mailto:aids@dh.gov.hk)*

## List of Tables / Figures

|  |            |
|--|------------|
| <b>1. NUMBER OF HIV/AIDS REPORTED</b>                      | <b>139</b> |
| TABLE 1.1 SUMMARY TABLE ON THE REPORTED NUMBER OF HIV/AIDS | 139        |
| CHART 1.1 NUMBER OF HIV/AIDS REPORTED                      | 142        |
| <b>2. GENDER DISTRIBUTION OF REPORTED HIV/AIDS</b>         | <b>143</b> |
| TABLE 2.1 GENDER DISTRIBUTION OF REPORTED HIV              | 143        |
| CHART 2.1 GENDER DISTRIBUTION OF REPORTED HIV BY QUARTER   | 144        |
| CHART 2.2 GENDER DISTRIBUTION OF REPORTED HIV BY YEAR      | 145        |
| TABLE 2.2 GENDER DISTRIBUTION OF REPORTED AIDS             | 146        |
| CHART 2.3 GENDER DISTRIBUTION OF REPORTED AIDS BY QUARTER  | 147        |
| CHART 2.4 GENDER DISTRIBUTION OF REPORTED AIDS BY YEAR     | 148        |
| <b>3. ETHNICITY OF REPORTED HIV/AIDS</b>                   | <b>149</b> |
| TABLE 3.1 DISTRIBUTION OF ETHNICITY OF REPORTED HIV        | 149        |
| CHART 3.1 DISTRIBUTION OF ETHNICITY OF REPORTED HIV        | 150        |
| TABLE 3.2 DISTRIBUTION OF ETHNICITY OF REPORTED AIDS       | 151        |
| CHART 3.2 DISTRIBUTION OF ETHNICITY OF REPORTED AIDS       | 152        |
| <b>4. AGE DISTRIBUTION OF REPORTED HIV/AIDS</b>            | <b>153</b> |
| TABLE 4.1 AGE DISTRIBUTION OF REPORTED HIV                 | 153        |
| CHART 4.1 AGE DISTRIBUTION OF REPORTED HIV                 | 154        |
| CHART 4.2 AGE GROUP & GENDER OF TOTAL REPORTED HIV         | 155        |
| TABLE 4.2 AGE DISTRIBUTION OF REPORTED AIDS                | 156        |
| CHART 4.3 AGE DISTRIBUTION OF REPORTED AIDS                | 157        |
| CHART 4.4 AGE GROUP & GENDER OF TOTAL REPORTED AIDS        | 158        |
| <b>5. EXPOSURE CATEGORIES OF REPORTED HIV/AIDS</b>         | <b>159</b> |
| TABLE 5.1 EXPOSURE CATEGORIES OF REPORTED HIV              | 159        |
| CHART 5.1 EXPOSURE CATEGORIES OF REPORTED HIV              | 160        |
| TABLE 5.2 EXPOSURE CATEGORIES OF REPORTED AIDS             | 161        |
| CHART 5.2 EXPOSURE CATEGORIES OF REPORTED AIDS             | 162        |

|  |            |
|--|------------|
| <b>6. RATIO (HETEROSEXUAL : HOMOSEXUAL / BISEXUAL) OF SEXUALLY ACQUIRED HIV INFECTION IN MEN</b>                         | <b>163</b> |
| TABLE 6.1 RATIO OF SEXUALLY ACQUIRED INFECTION IN MEN WITH REPORTED HIV/AIDS (HETEROSEXUAL : HOMO / BISEXUAL) BY QUARTER | 163        |
| TABLE 6.2 RATIO OF SEXUALLY ACQUIRED INFECTION IN MEN WITH REPORTED HIV/AIDS (HETEROSEXUAL : HOMO / BISEXUAL) BY YEAR    | 164        |
| <b>7. INJECTING DRUG USERS IN REPORTED HIV/AIDS</b>  | <b>165</b> |
| TABLE 7.1 INJECTING DRUG USERS IN REPORTED HIV/AIDS  | 165        |
| TABLE 7.2 NUMBER OF INJECTING DRUG USER IN REPORTED HIV/AIDS BY YEAR   | 166        |
| <b>8. SOURCE OF REFERRAL OF REPORTED HIV/AIDS</b>  | <b>167</b> |
| TABLE 8.1 SOURCE OF REFERRAL OF REPORTED HIV   | 167        |
| CHART 8.1 SOURCE OF REFERRAL OF REPORTED HIV   | 168        |
| TABLE 8.2 SOURCE OF REFERRAL OF REPORTED AIDS  | 169        |
| CHART 8.2 SOURCE OF REFERRAL OF REPORTED AIDS  | 170        |
| <b>9. DISTRIBUTION OF AIDS DEFINING ILLNESSES</b>  | <b>171</b> |
| TABLE 9.1 DISTRIBUTION OF AIDS DEFINING ILLNESS OF REPORTED AIDS   | 171        |
| CHART 9.1 AIDS DEFINING ILLNESS OF TOTAL REPORTED AIDS   | 172        |
| CHART 9.2 AIDS DEFINING ILLNESS OF REPORTED AIDS BY YEAR   | 173        |
| <b>10. REPORTED SEXUALLY TRANSMITTED INFECTIONS (STIS) DIAGNOSED IN SOCIAL HYGIENE SERVICE</b>                           | <b>174</b> |
| TABLE 10.1 SUMMARY TABLE ON THE REPORTED STIS DIAGNOSED IN SOCIAL HYGIENE SERVICE  | 174        |
| <b>11. GENDER DISTRIBUTION OF REPORTED STIS</b>  | <b>176</b> |
| TABLE 11.1 GENDER DISTRIBUTION OF SELECTED STI REPORTED BY SOCIAL HYGIENE SERVICE  | 176        |
| TABLE 11.2 GENDER DISTRIBUTION OF REPORTED STI BY CLINIC   | 178        |
| <b>12. CLINIC DISTRIBUTION</b>   | <b>179</b> |
| CHART 12.1 NUMBER OF NEWLY REPORT STI IN Q4 2023 BY CLINIC (MALE CLIENTS)  | 179        |
| CHART 12.2 NUMBER OF NEWLY REPORT STI IN Q4 2023 BY CLINIC (FEMALE CLIENTS)  | 180        |

## 1. Number of HIV/AIDS reported

**Table 1.1 Summary table on the reported number of HIV/AIDS**

|                         | This quarter<br>(Oct - Dec 2023) |          | Last quarter<br>(Jul - Sep 2023) |          | Same quarter last year<br>(Oct - Dec 2022) |          | Cumulative<br>(1984 – 2023) |            |
|-------------------------|----------------------------------|----------|----------------------------------|----------|--|----------|-----------------------------|------------|
|                         | HIV                              | AIDS     | HIV                              | AIDS     | HIV  | AIDS     | HIV                         | AIDS       |
| <b>Sex</b>              |                                  |          |                                  |          |  |          |                             |            |
| Male                    | 75                               | 11       | 92                               | 23       | 85   | 7        | 9,867                       | 2,056      |
| Female                  | 20                               | 3        | 21                               | 5        | 17   | 2        | 2,171                       | 427        |
| <b>Ethnicity / race</b> |                                  |          |                                  |          |  |          |                             |            |
| Chinese                 | 64                               | 8        | 76                               | 22       | 71   | 7        | 8,390                       | 1,915      |
| Non-Chinese             | 14                               | 6        | 24                               | 6        | 19   | 2        | 3,216                       | 568        |
| <i>Asian</i>            | <i>10</i>                        | <i>3</i> | <i>13</i>                        | <i>5</i> | <i>13</i>                                  | <i>2</i> | <i>1,676</i>                | <i>403</i> |
| <i>White</i>            | <i>3</i>                         | <i>3</i> | <i>5</i>                         | <i>1</i> | <i>1</i>                                   | <i>0</i> | <i>669</i>                  | <i>110</i> |
| <i>Black</i>            | <i>0</i>                         | <i>0</i> | <i>5</i>                         | <i>0</i> | <i>5</i>                                   | <i>0</i> | <i>283</i>                  | <i>46</i>  |
| <i>Others</i>           | <i>1</i>                         | <i>0</i> | <i>1</i>                         | <i>0</i> | <i>0</i>                                   | <i>0</i> | <i>588</i>                  | <i>9</i>   |
| Unknown                 | 17                               | 0        | 13                               | 0        | 12   | 0        | 432                         | 0          |

(to be cont'd)

**Table 1.1 (cont'd)**

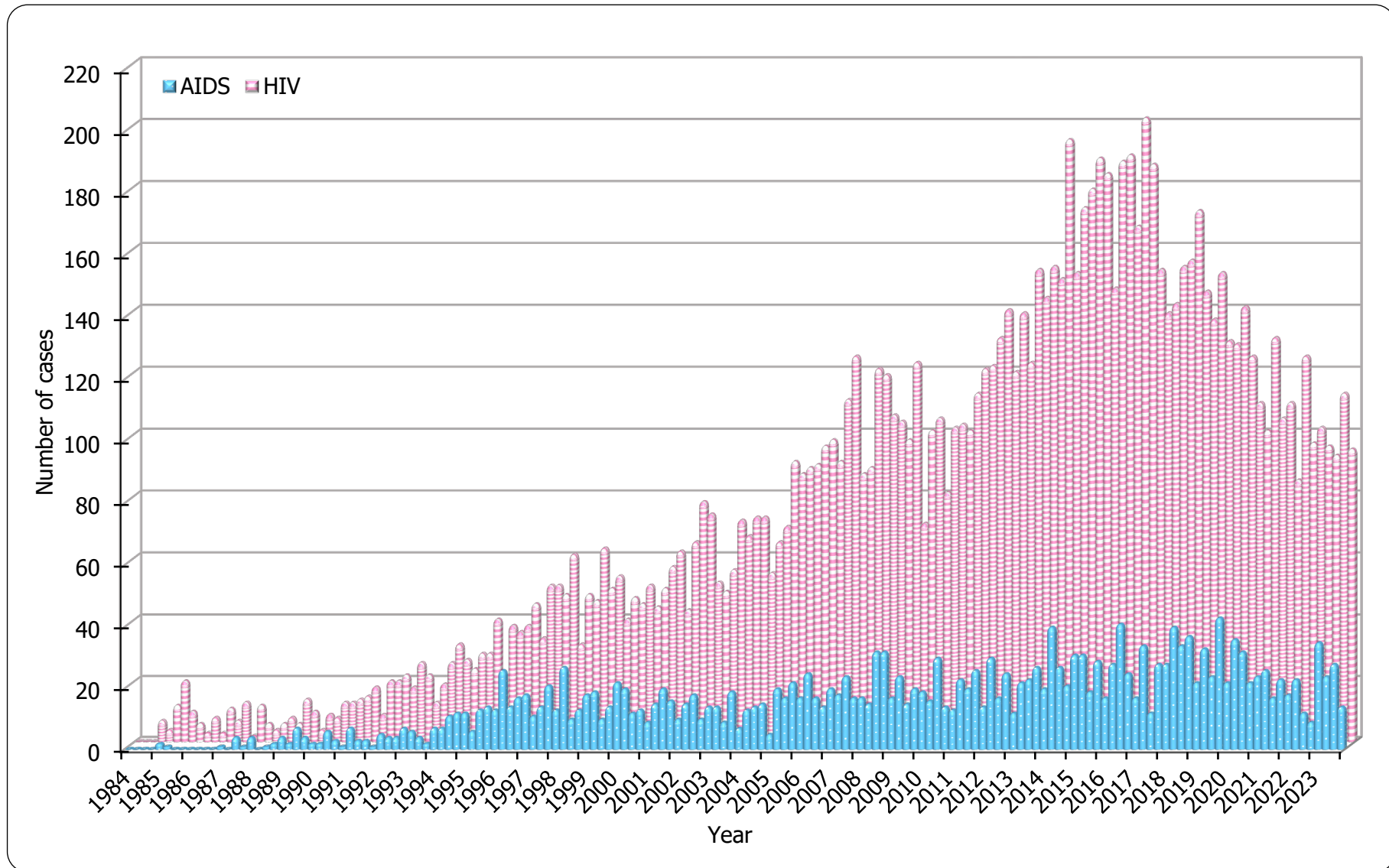
|                                | This quarter<br>(Oct - Dec 2023) |      | Last quarter<br>(Jul - Sep 2023) |      | Same quarter last year<br>(Oct - Dec 2022) |      | Cumulative<br>(1984 – 2023) |       |
|--------------------------------|----------------------------------|------|----------------------------------|------|--|------|-----------------------------|-------|
|                                | HIV                              | AIDS | HIV                              | AIDS | HIV  | AIDS | HIV                         | AIDS  |
| <b>Age at diagnosis</b>        |                                  |      |                                  |      |  |      |                             |       |
| Adult                          | 95                               | 14   | 112                              | 28   | 102  | 9    | 11,982                      | 2,469 |
| Child (age 13 or less)         | 0                                | 0    | 1                                | 0    | 0  | 0    | 56                          | 14    |
| <b>Exposure category</b>       |                                  |      |                                  |      |  |      |                             |       |
| Heterosexual                   | 19                               | 6    | 36                               | 13   | 33   | 4    | 3,858                       | 1,246 |
| Homosexual                     | 46                               | 7    | 46                               | 9    | 44   | 4    | 5,040                       | 794   |
| Bisexual                       | 4                                | 1    | 11                               | 4    | 9  | 0    | 718                         | 174   |
| Injecting drug use             | 2                                | 0    | 1                                | 0    | 0  | 0    | 383                         | 70    |
| Blood / blood product infusion | 0                                | 0    | 0                                | 0    | 0  | 0    | 87                          | 26    |
| Mother-to-child transmission   | 0                                | 0    | 1                                | 0    | 0  | 0    | 36                          | 11    |
| Undetermined                   | 24                               | 0    | 18                               | 2    | 16   | 1    | 1,916                       | 162   |

**(to be cont'd)**

**Table 1.1 (cont'd)**

|   | This quarter<br>(Oct - Dec 2023) |           | Last quarter<br>(Jul - Sep 2023) |           | Same quarter last year<br>(Oct - Dec 2022) |          | Cumulative<br>(1984 – 2023) |              |
|---|----------------------------------|-----------|----------------------------------|-----------|--|----------|-----------------------------|--------------|
|   | HIV                              | AIDS      | HIV                              | AIDS      | HIV  | AIDS     | HIV                         | AIDS         |
| <b>Source of referral</b>                     |                                  |           |                                  |           |  |          |                             |              |
| Public hospitals / clinics / laboratories     | 42                               | 9         | 61                               | 24        | 50   | 9        | 5,020                       | 1,926        |
| Private hospitals / clinics / laboratories    | 14                               | 2         | 21                               | 2         | 7  | 0        | 2,265                       | 308          |
| Social Hygiene Clinics                        | 11                               | 2         | 13                               | 1         | 15   | 0        | 1,743                       | 87           |
| DH AIDS Unit                                  | 8                                | 1         | 9                                | 1         | 13   | 0        | 1,509                       | 123          |
| AIDS service organisations (NGOs)             | 18                               | 0         | 7                                | 0         | 16   | 0        | 1,178                       | 21           |
| Hong Kong Red Cross Blood Transfusion Service | 2                                | 0         | 2                                | 0         | 1  | 0        | 186                         | 11           |
| Drug rehabilitation services                  | 0                                | 0         | 0                                | 0         | 0  | 0        | 137                         | 7            |
| <b>Total</b>                                  | <b>95</b>                        | <b>14</b> | <b>113</b>                       | <b>28</b> | <b>102</b>                                 | <b>9</b> | <b>12,038</b>               | <b>2,483</b> |

**Chart 1.1 Number of HIV/AIDS reported**



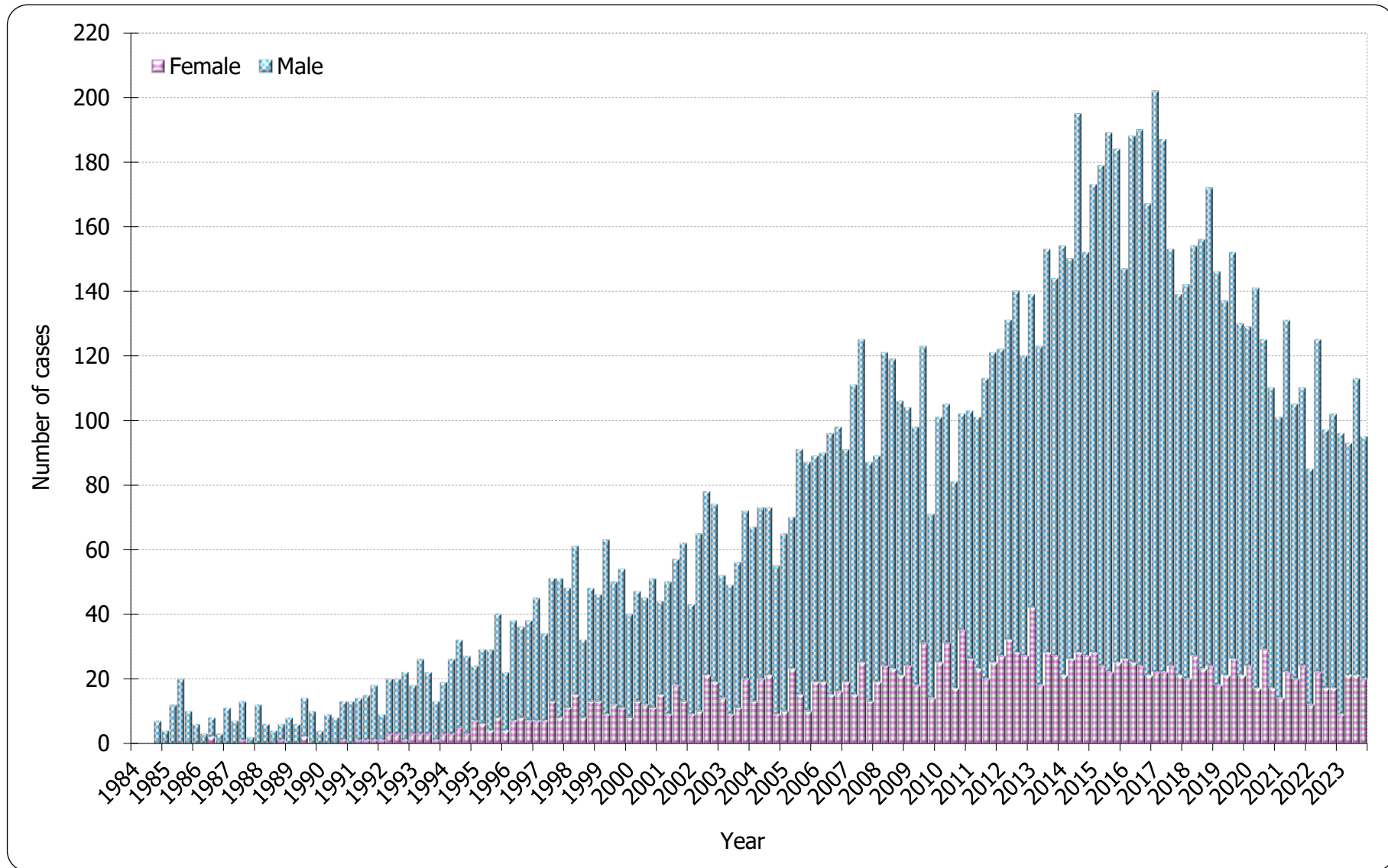
## 2. Gender distribution of reported HIV/AIDS

**Table 2.1 Gender distribution of reported HIV**

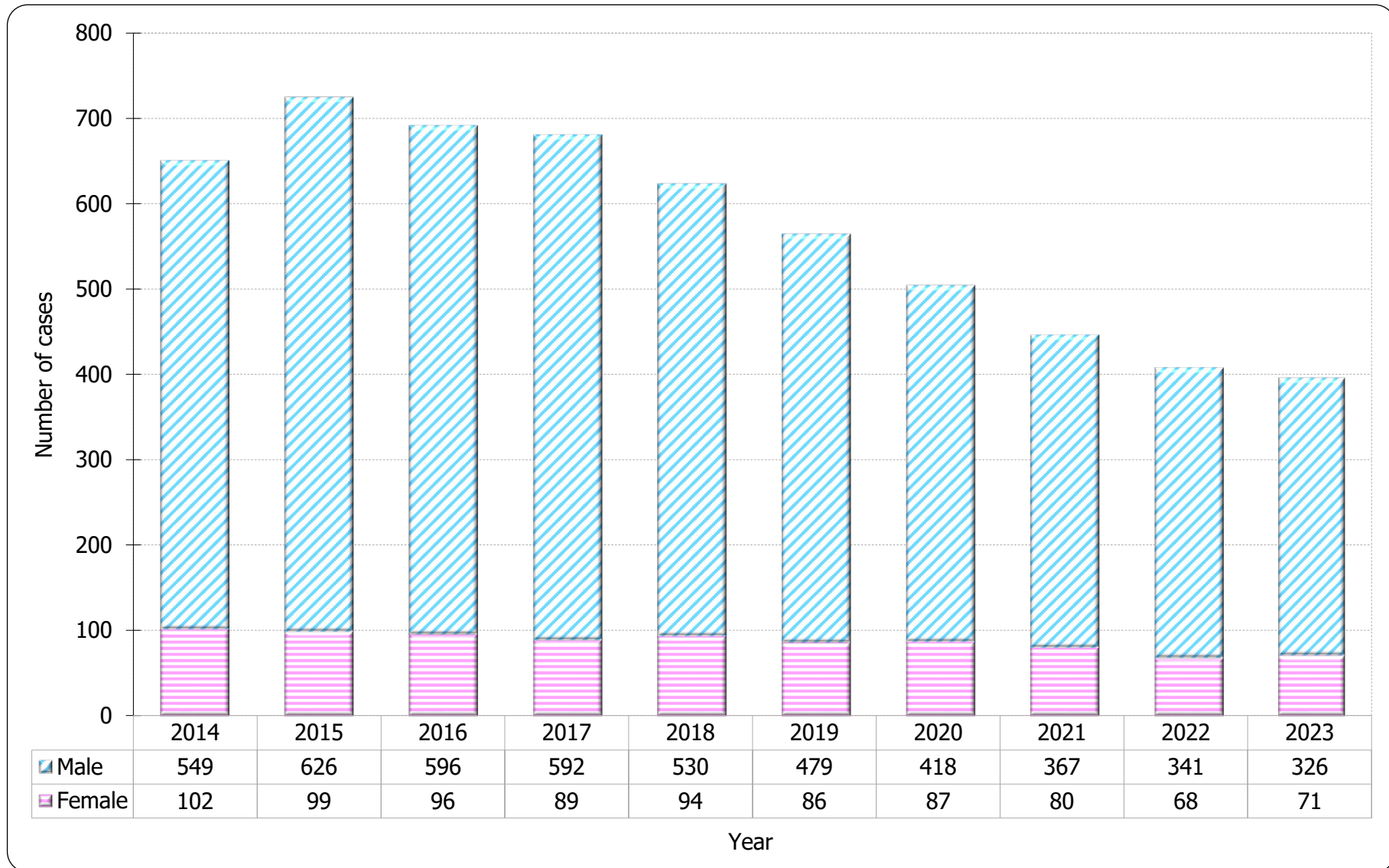
|              | This quarter<br>(Oct - Dec 2023) | Last quarter<br>(Jul - Sep 2023) | Same quarter last year<br>(Oct - Dec 2022) | Cumulative<br>(1984 – 2023) |
|--------------|----------------------------------|----------------------------------|--|-----------------------------|
| Male         | 75                               | 92                               | 85   | 9,867                       |
| Female       | 20                               | 21                               | 17   | 2,171                       |
| <b>Total</b> | <b>95</b>                        | <b>113</b>                       | <b>102</b>                                 | <b>12,038</b>               |



**Chart 2.1 Gender distribution of reported HIV by quarter**



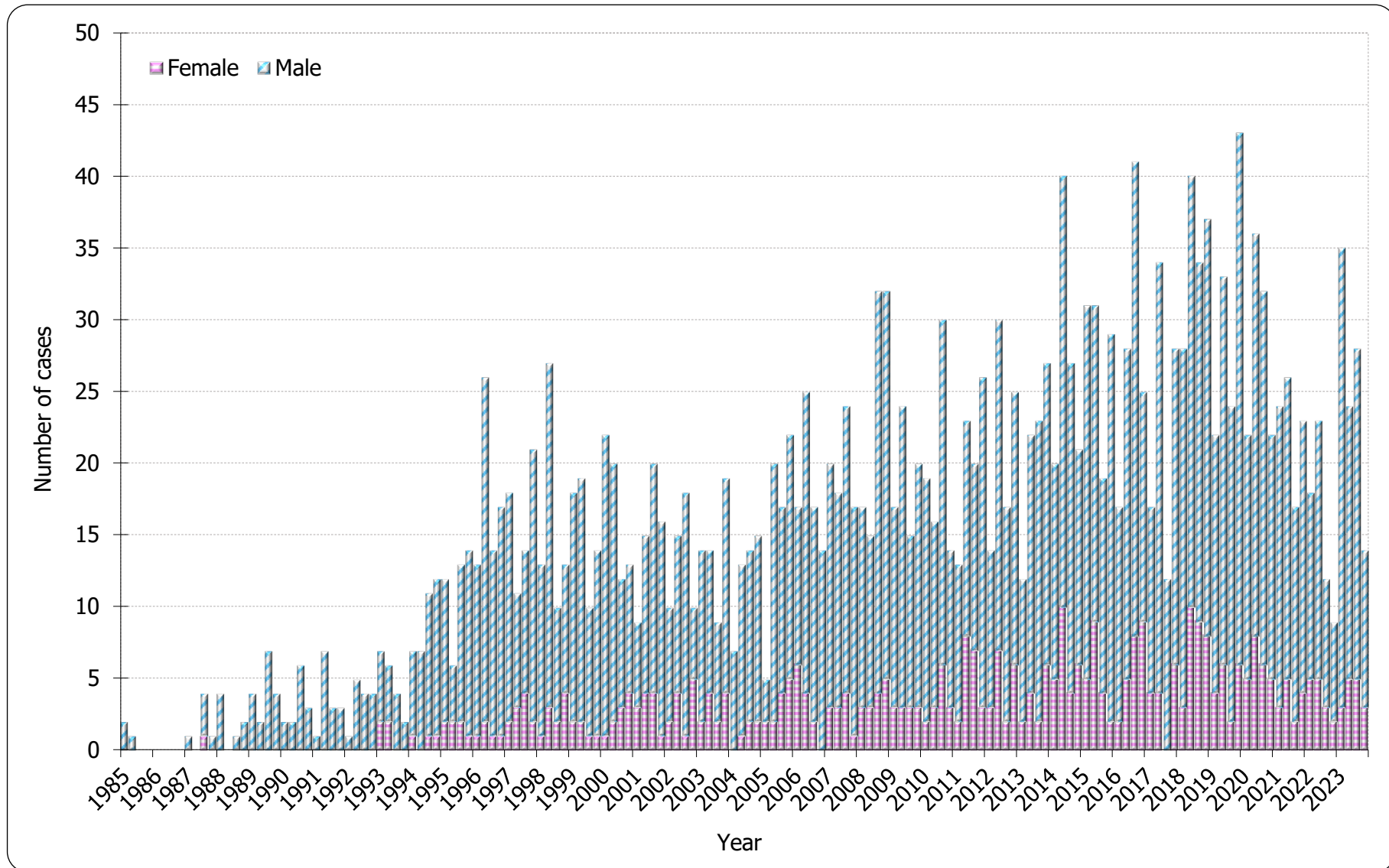
**Chart 2.2 Gender distribution of reported HIV by year**



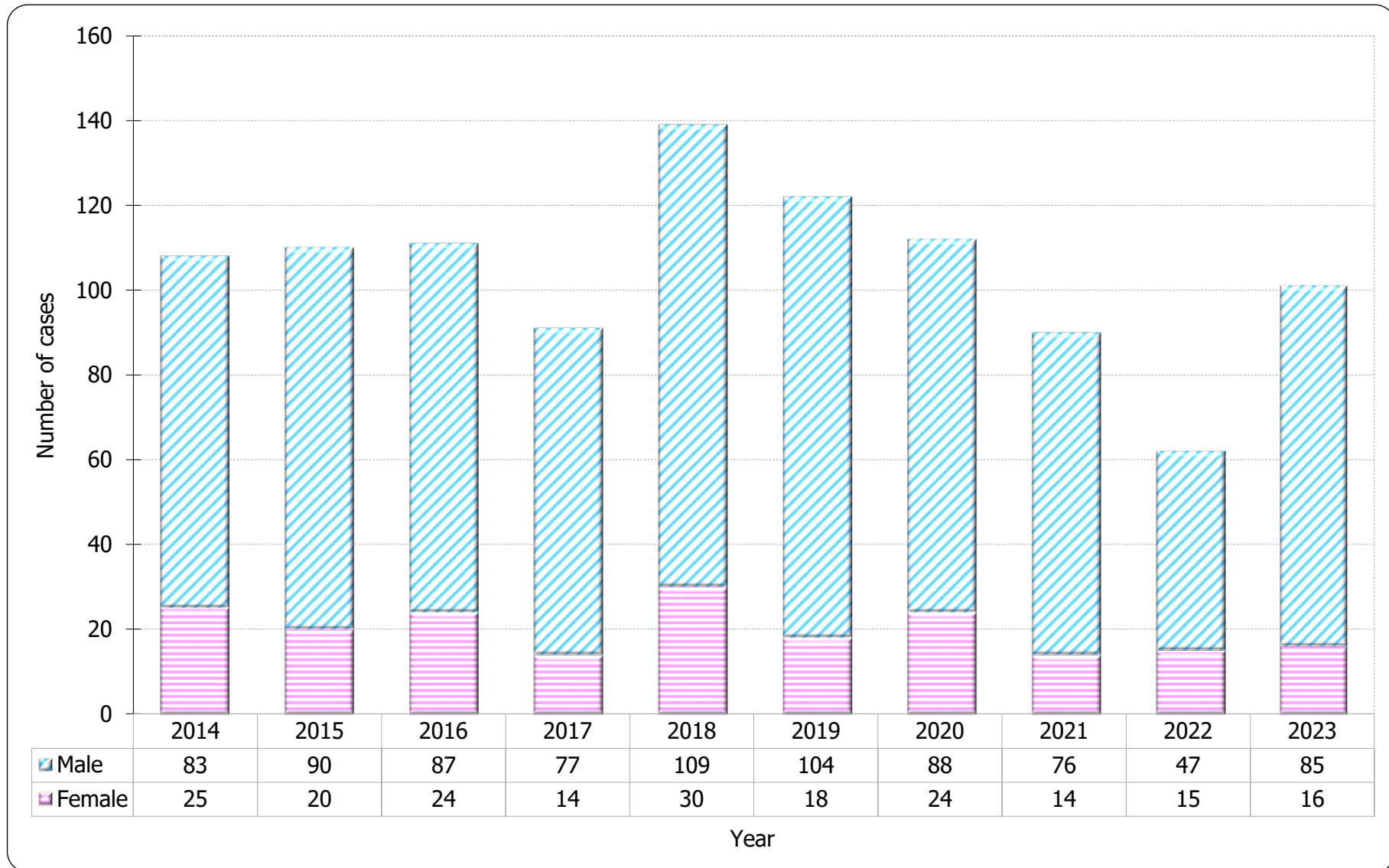
**Table 2.2 Gender distribution of reported AIDS**

|              | This quarter<br>(Oct - Dec 2023) | Last quarter<br>(Jul - Sep 2023) | Same quarter last year<br>(Oct - Dec 2022) | Cumulative<br>(1984 – 2023) |
|--------------|----------------------------------|----------------------------------|--|-----------------------------|
| Male         | 11                               | 23                               | 7  | 2,056                       |
| Female       | 3                                | 5                                | 2  | 427                         |
| <b>Total</b> | <b>14</b>                        | <b>28</b>                        | <b>9</b>                                   | <b>2,483</b>                |

**Chart 2.3 Gender distribution of reported AIDS by quarter**



**Chart 2.4 Gender distribution of reported AIDS by year**

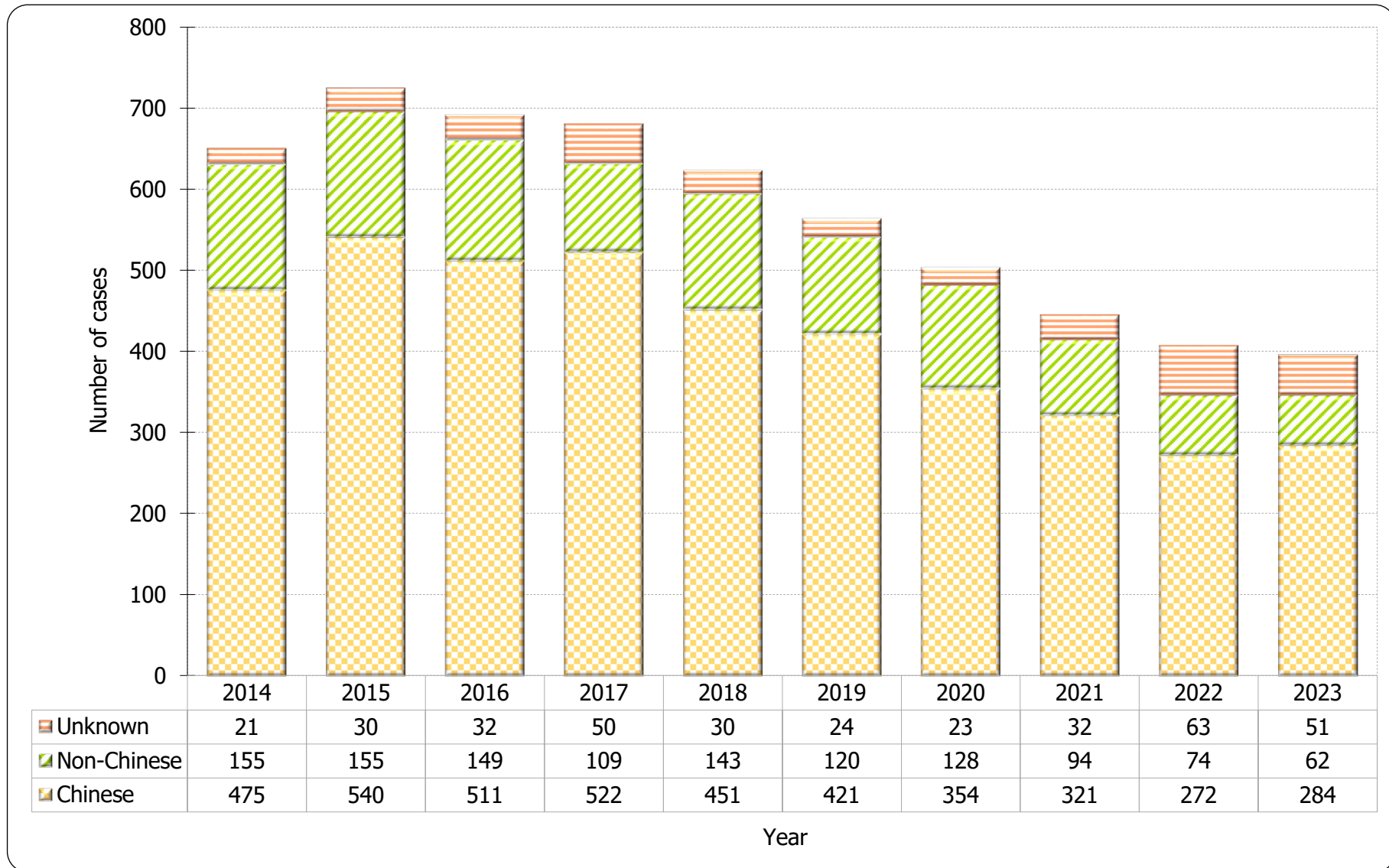


### 3. Ethnicity of reported HIV/AIDS

**Table 3.1 Distribution of ethnicity of reported HIV**

|                    | This quarter<br>(Oct - Dec 2023) | Last quarter<br>(Jul - Sep 2023) | Same quarter last year<br>(Oct - Dec 2022) | Cumulative<br>(1984 – 2023) |
|--------------------|----------------------------------|----------------------------------|--|-----------------------------|
| <b>Chinese</b>     | 64                               | 76                               | 71   | 8,390                       |
| <b>Non-Chinese</b> | 14                               | 24                               | 19   | 3,216                       |
| <i>Asian</i>       | <i>10</i>                        | <i>13</i>                        | <i>13</i>                                  | <i>1,676</i>                |
| <i>White</i>       | <i>3</i>                         | <i>5</i>                         | <i>1</i>                                   | <i>669</i>                  |
| <i>Black</i>       | <i>0</i>                         | <i>5</i>                         | <i>5</i>                                   | <i>283</i>                  |
| <i>Others</i>      | <i>1</i>                         | <i>1</i>                         | <i>0</i>                                   | <i>588</i>                  |
| <b>Unknown</b>     | 17                               | 13                               | 12   | 432                         |
| <b>Total</b>       | <b>95</b>                        | <b>113</b>                       | <b>102</b>                                 | <b>12,038</b>               |

**Chart 3.1 Distribution of ethnicity of reported HIV**

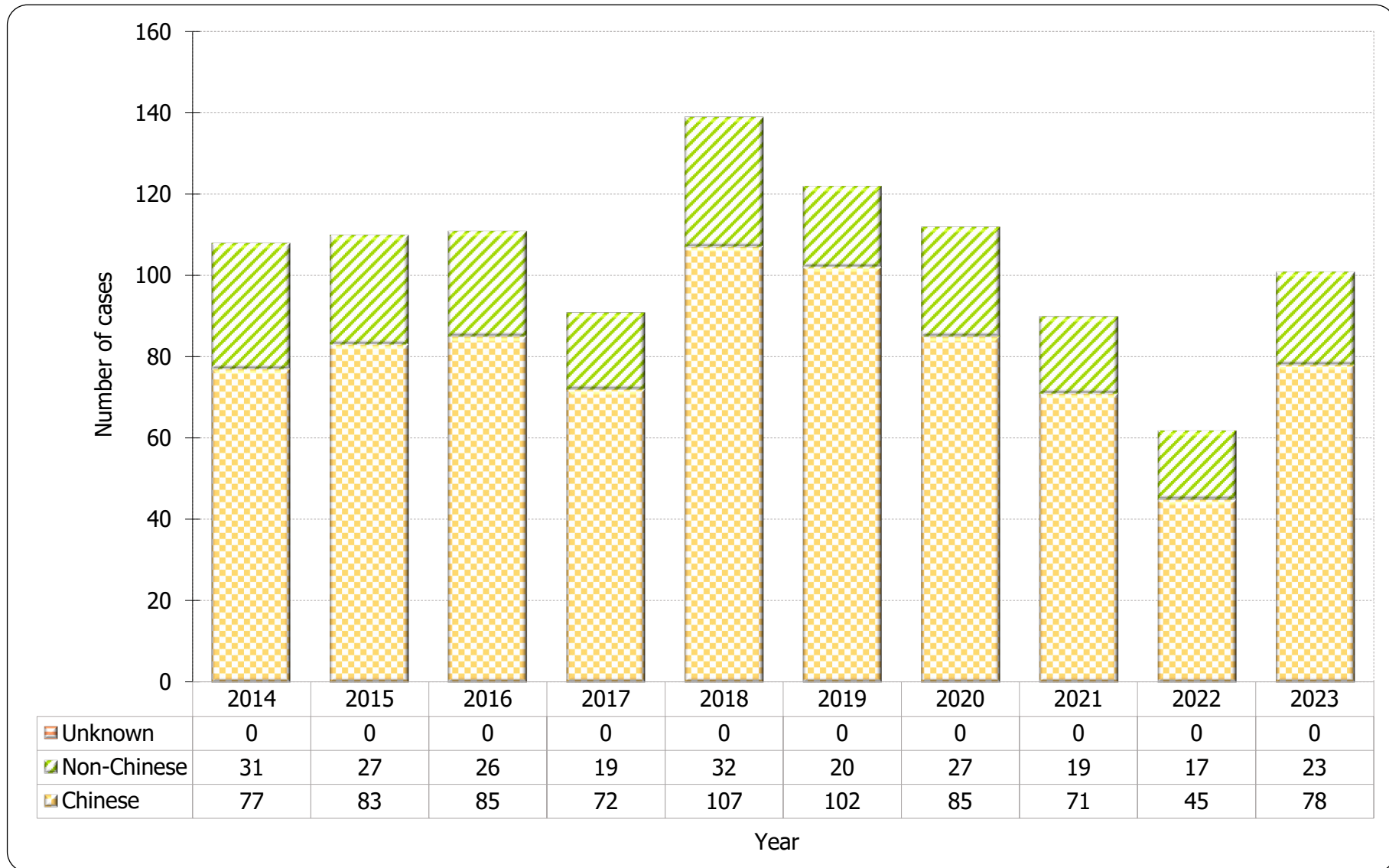


**Table 3.2 Distribution of ethnicity of reported AIDS**

|                    | This quarter<br>(Oct - Dec 2023) | Last quarter<br>(Jul - Sep 2023) | Same quarter last year<br>(Oct - Dec 2022) | Cumulative<br>(1984 – 2023) |
|--------------------|----------------------------------|----------------------------------|--|-----------------------------|
| <b>Chinese</b>     | 8                                | 22                               | 7  | 1,915                       |
| <b>Non-Chinese</b> | 6                                | 6                                | 2  | 568                         |
| <i>Asian</i>       | <i>3</i>                         | <i>5</i>                         | <i>2</i>                                   | <i>403</i>                  |
| <i>White</i>       | <i>3</i>                         | <i>1</i>                         | <i>0</i>                                   | <i>110</i>                  |
| <i>Black</i>       | <i>0</i>                         | <i>0</i>                         | <i>0</i>                                   | <i>46</i>                   |
| <i>Others</i>      | <i>0</i>                         | <i>0</i>                         | <i>0</i>                                   | <i>9</i>                    |
| <b>Unknown</b>     | 0                                | 0                                | 0  | 0                           |
| <b>Total</b>       | <b>14</b>                        | <b>28</b>                        | <b>9</b>                                   | <b>2,483</b>                |



**Chart 3.2 Distribution of ethnicity of reported AIDS**

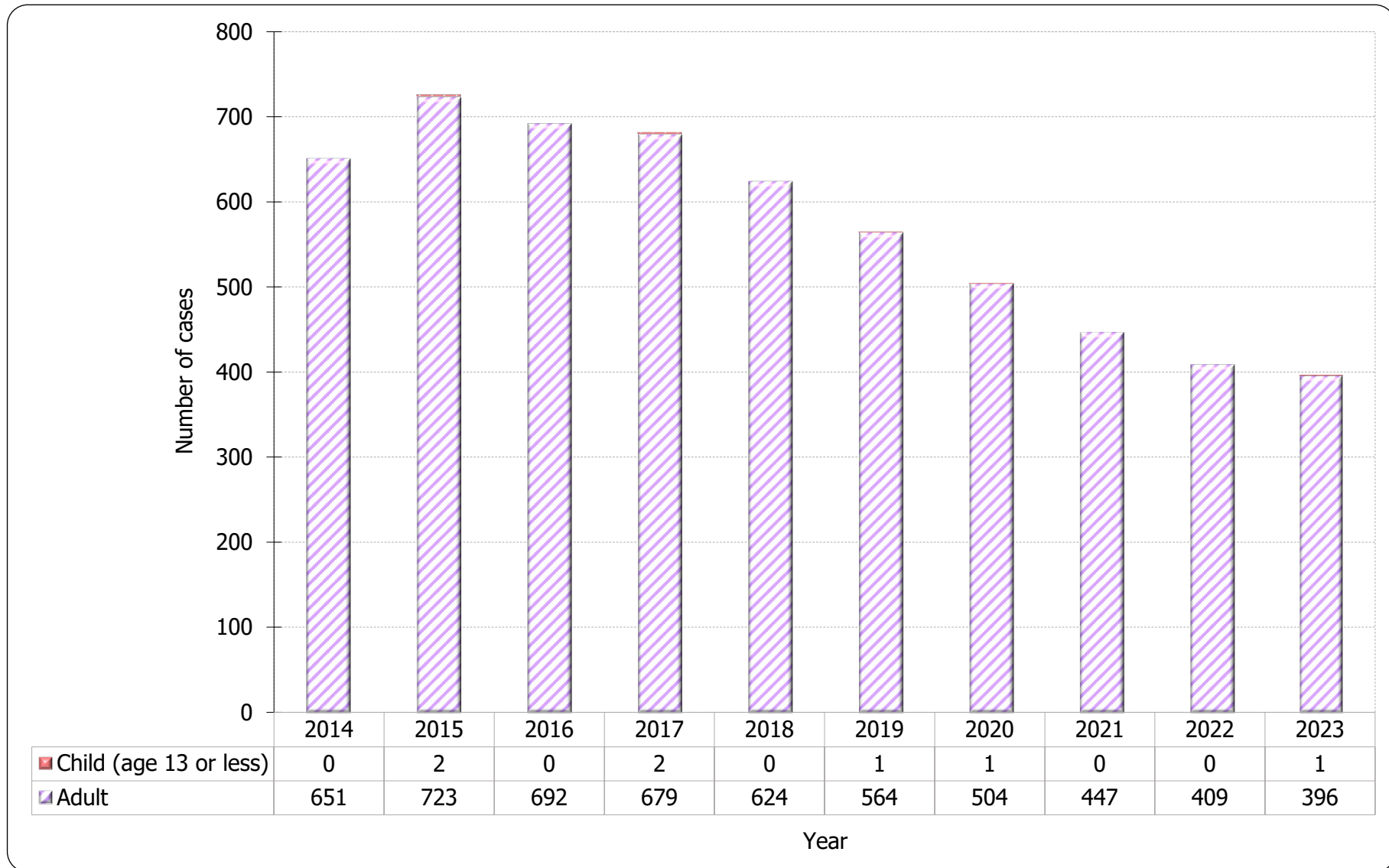


#### 4. Age distribution of reported HIV/AIDS

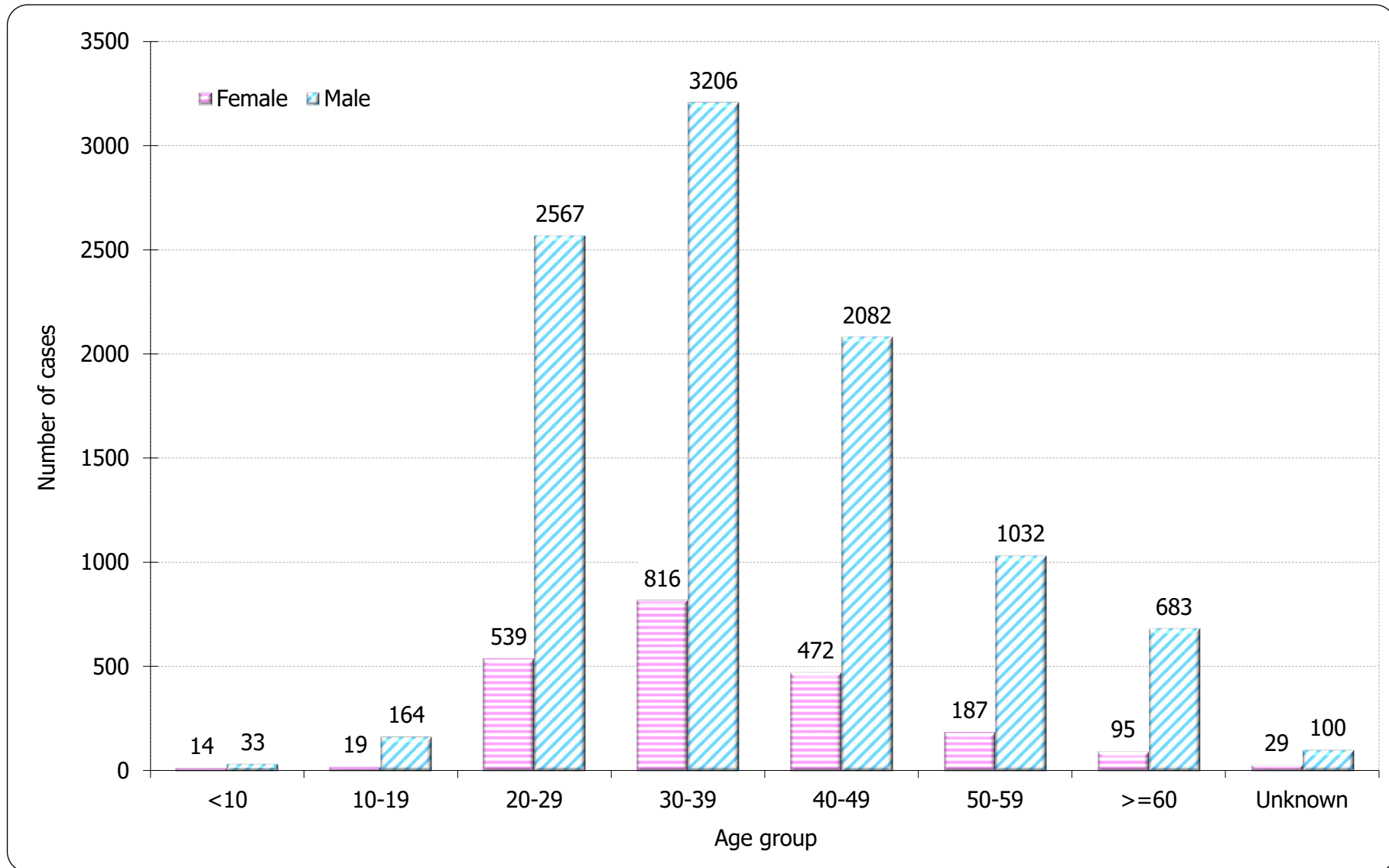
**Table 4.1 Age distribution of reported HIV**

|                        | This quarter<br>(Oct - Dec 2023) | Last quarter<br>(Jul - Sep 2023) | Same quarter last year<br>(Oct - Dec 2022) | Cumulative<br>(1984 – 2023) |
|------------------------|----------------------------------|----------------------------------|--|-----------------------------|
| Adult                  | 95                               | 112                              | 102  | 11,982                      |
| Child (age 13 or less) | 0                                | 1                                | 0  | 56                          |
| <b>Total</b>           | <b>95</b>                        | <b>113</b>                       | <b>102</b>                                 | <b>12,038</b>               |

**Chart 4.1 Age distribution of reported HIV**



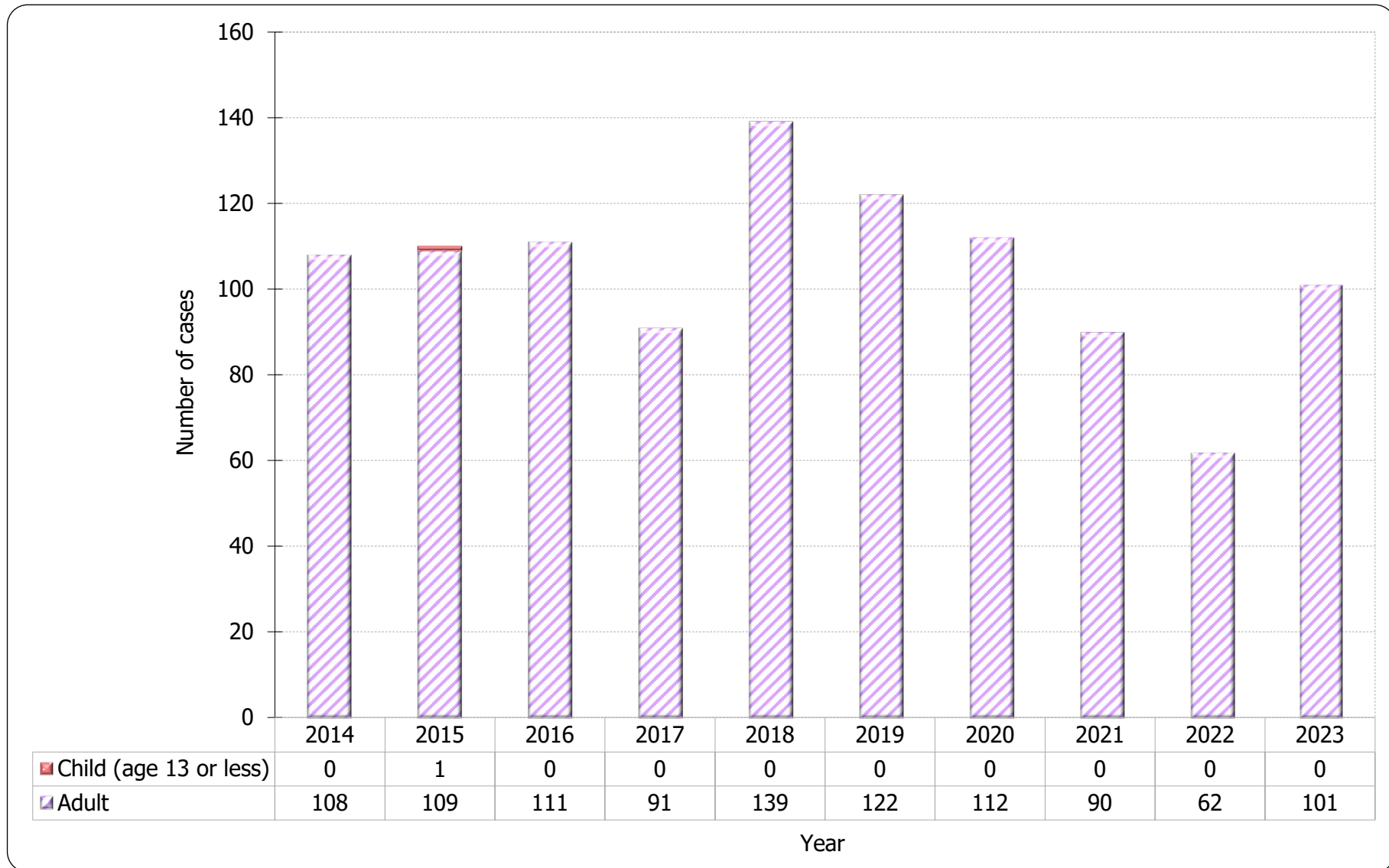
**Chart 4.2 Age group & gender of total reported HIV**



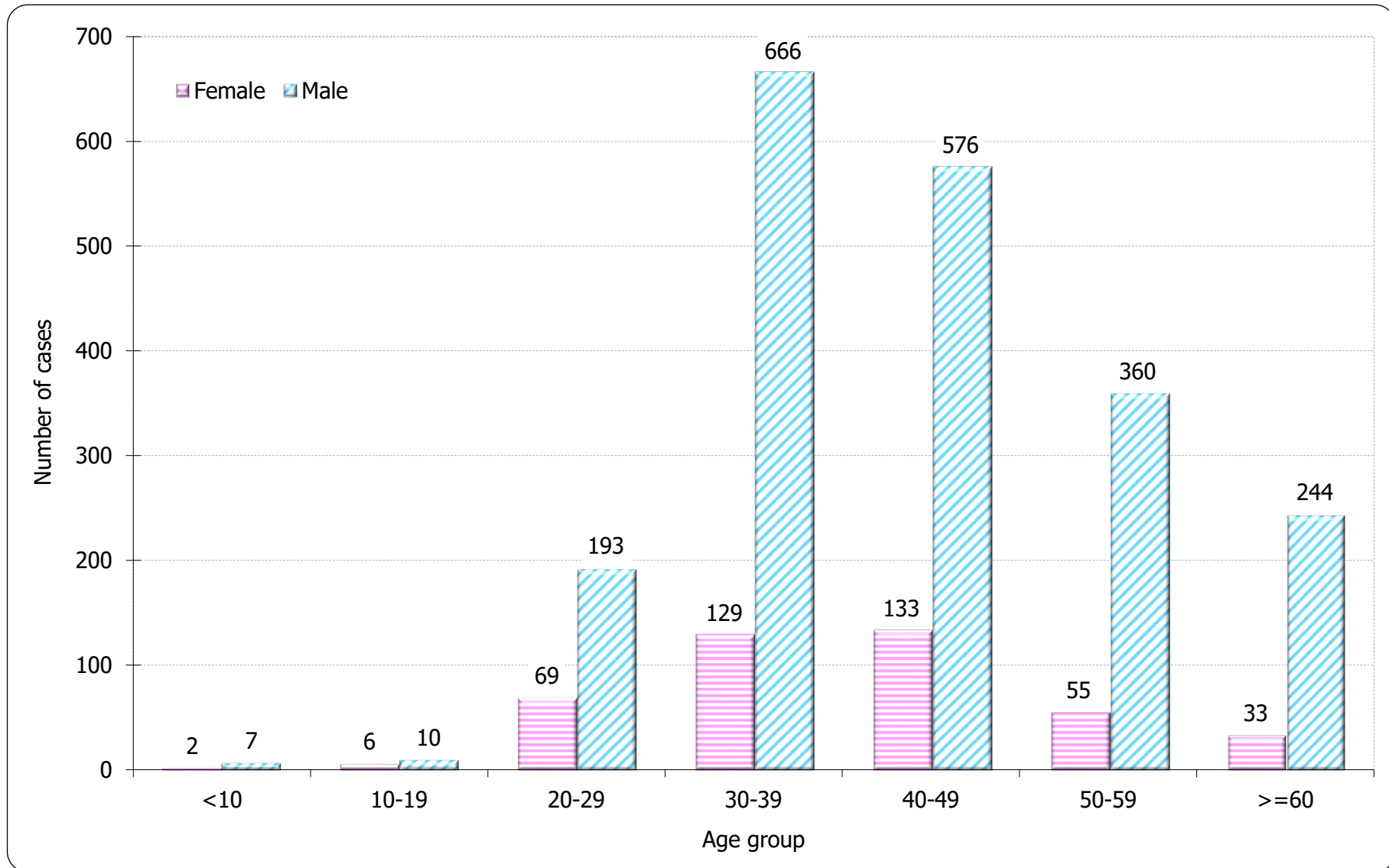
**Table 4.2 Age distribution of reported AIDS**

|                        | This quarter<br>(Oct - Dec 2023) | Last quarter<br>(Jul - Sep 2023) | Same quarter last year<br>(Oct - Dec 2022) | Cumulative<br>(1984 – 2023) |
|------------------------|----------------------------------|----------------------------------|--|-----------------------------|
| Adult                  | 14                               | 28                               | 9  | 2,469                       |
| Child (age 13 or less) | 0                                | 0                                | 0  | 14                          |
| <b>Total</b>           | <b>14</b>                        | <b>28</b>                        | <b>9</b>                                   | <b>2,483</b>                |

**Chart 4.3 Age distribution of reported AIDS**



**Chart 4.4 Age group & gender of total reported AIDS**



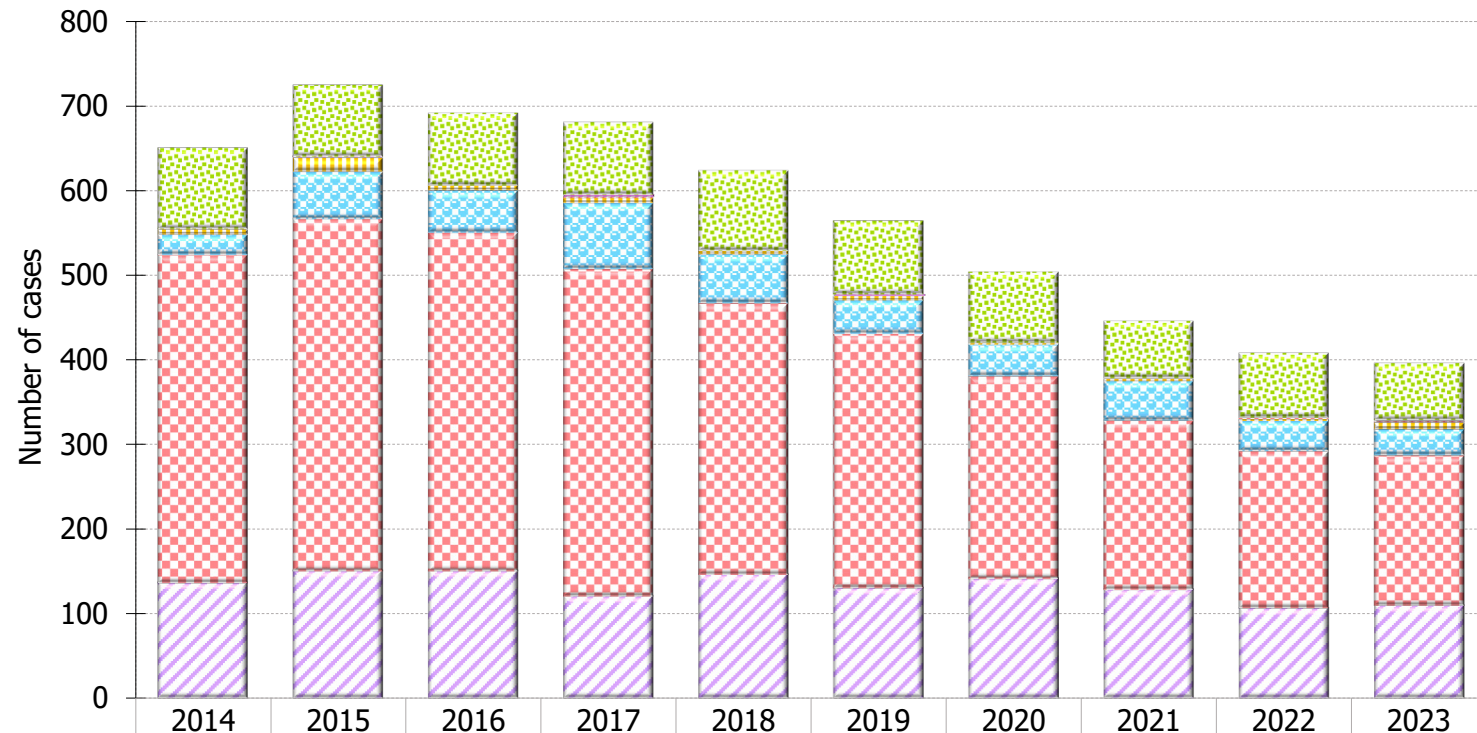
## 5. Exposure categories of reported HIV/AIDS

**Table 5.1 Exposure categories of reported HIV**

|                                | This quarter<br>(Oct - Dec 2023) | Last quarter<br>(Jul - Sep 2023) | Same quarter last year<br>(Oct - Dec 2022) | Cumulative<br>(1984 – 2023) |
|--------------------------------|----------------------------------|----------------------------------|--|-----------------------------|
| Heterosexual                   | 19                               | 36                               | 33   | 3,858                       |
| Homosexual                     | 46                               | 46                               | 44   | 5,040                       |
| Bisexual                       | 4                                | 11                               | 9  | 718                         |
| Injecting drug use             | 2                                | 1                                | 0  | 383                         |
| Blood / blood product infusion | 0                                | 0                                | 0  | 87                          |
| Mother-to-child transmission   | 0                                | 1                                | 0  | 36                          |
| Undetermined                   | 24                               | 18                               | 16   | 1,916                       |
| <b>Total</b>                   | <b>95</b>                        | <b>113</b>                       | <b>102</b>                                 | <b>12,038</b>               |



**Chart 5.1 Exposure categories of reported HIV**



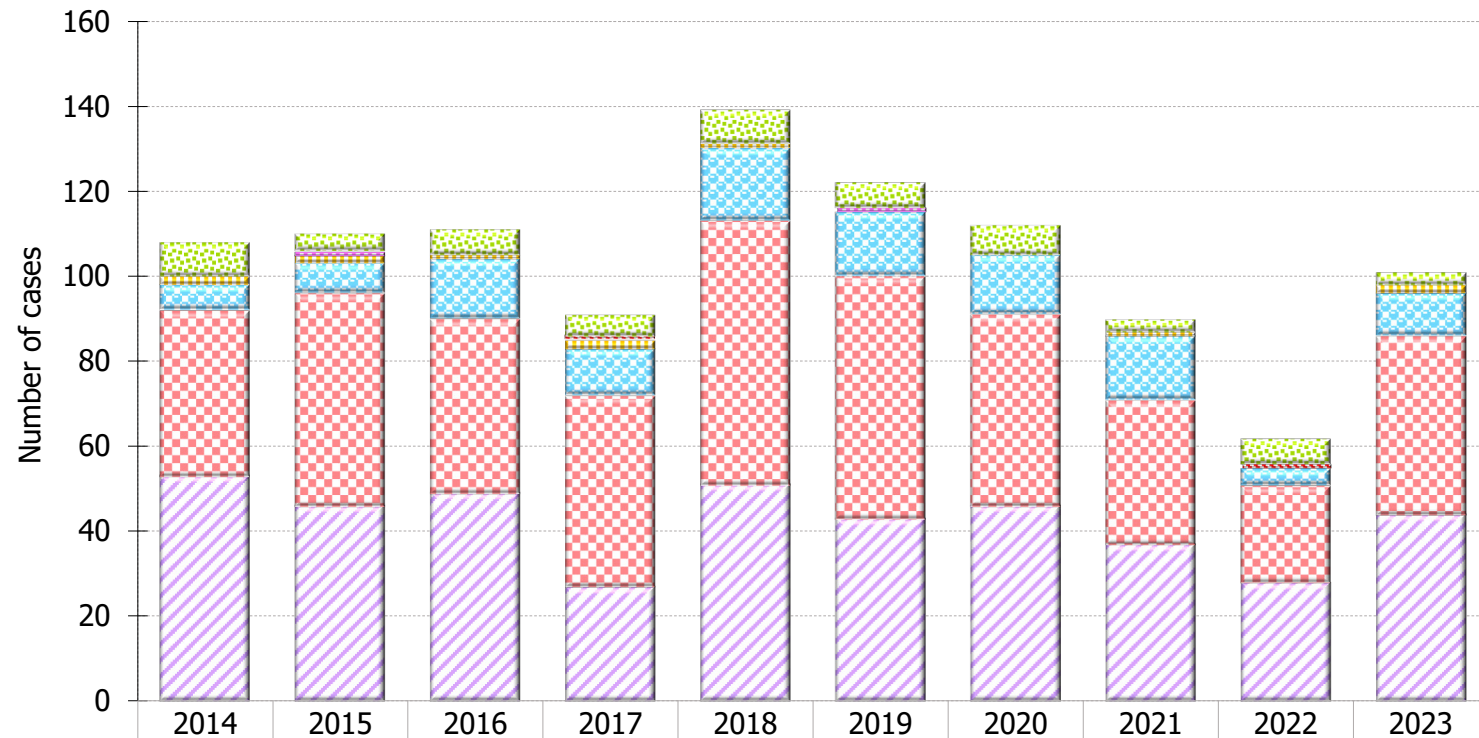
|                              | 2014 | 2015 | 2016 | 2017 | 2018 | 2019 | 2020 | 2021 | 2022 | 2023 |
|------------------------------|------|------|------|------|------|------|------|------|------|------|
| Undetermined                 | 96   | 85   | 86   | 86   | 95   | 87   | 84   | 68   | 77   | 68   |
| Mother-to-child transmission | 0    | 2    | 0    | 3    | 0    | 2    | 0    | 0    | 0    | 1    |
| Blood contact                | 1    | 0    | 0    | 1    | 0    | 0    | 0    | 0    | 1    | 1    |
| Injecting drug use           | 6    | 16   | 6    | 6    | 4    | 5    | 2    | 3    | 2    | 8    |
| Bisexual                     | 24   | 56   | 50   | 78   | 58   | 40   | 38   | 47   | 36   | 31   |
| Homosexual                   | 387  | 415  | 399  | 386  | 320  | 300  | 239  | 200  | 186  | 178  |
| Heterosexual                 | 137  | 151  | 151  | 121  | 147  | 131  | 142  | 129  | 107  | 110  |

Year

**Table 5.2 Exposure categories of reported AIDS**

|                                | This quarter<br>(Oct - Dec 2023) | Last quarter<br>(Jul - Sep 2023) | Same quarter last year<br>(Oct - Dec 2022) | Cumulative<br>(1984 – 2023) |
|--------------------------------|----------------------------------|----------------------------------|--|-----------------------------|
| Heterosexual                   | 6                                | 13                               | 4  | 1,246                       |
| Homosexual                     | 7                                | 9                                | 4  | 794                         |
| Bisexual                       | 1                                | 4                                | 0  | 174                         |
| Injecting drug use             | 0                                | 0                                | 0  | 70                          |
| Blood / blood product infusion | 0                                | 0                                | 0  | 26                          |
| Mother-to-child transmission   | 0                                | 0                                | 0  | 11                          |
| Undetermined                   | 0                                | 2                                | 1  | 162                         |
| <b>Total</b>                   | <b>14</b>                        | <b>28</b>                        | <b>9</b>                                   | <b>2,483</b>                |

**Chart 5.2 Exposure categories of reported AIDS**



|                              | 2014 | 2015 | 2016 | 2017 | 2018 | 2019 | 2020 | 2021 | 2022 | 2023 |
|------------------------------|------|------|------|------|------|------|------|------|------|------|
| Undetermined                 | 8    | 4    | 6    | 5    | 8    | 6    | 7    | 3    | 6    | 3    |
| Mother-to-child transmission | 0    | 1    | 0    | 0    | 0    | 1    | 0    | 0    | 0    | 0    |
| Blood contact                | 0    | 0    | 0    | 1    | 0    | 0    | 0    | 0    | 1    | 0    |
| Injecting drug use           | 2    | 2    | 1    | 2    | 1    | 0    | 0    | 1    | 0    | 2    |
| Bisexual                     | 6    | 7    | 14   | 11   | 17   | 15   | 14   | 15   | 4    | 10   |
| Homosexual                   | 39   | 50   | 41   | 45   | 62   | 57   | 45   | 34   | 23   | 42   |
| Heterosexual                 | 53   | 46   | 49   | 27   | 51   | 43   | 46   | 37   | 28   | 44   |

Year

## 6. Ratio (heterosexual : homosexual / bisexual) of sexually acquired HIV infection in men

**Table 6.1 Ratio of sexually acquired infection in men with reported HIV/AIDS (heterosexual : homo / bisexual) by quarter**

|      | This quarter<br>(Oct - Dec 2023) | Last quarter<br>(Jul - Sep 2023) | Same quarter last year<br>(Oct - Dec 2022) | Cumulative<br>(1984 – 2023) |
|------|----------------------------------|----------------------------------|--|-----------------------------|
| HIV  | 0.2 : 1                          | 0.4 : 1                          | 0.4 : 1                                    | <b>0.4 : 1</b>              |
| AIDS | 0.4 : 1                          | 0.7 : 1                          | 0.8 : 1                                    | <b>0.9 : 1</b>              |

**Table 6.2 Ratio of sexually acquired infection in men with reported HIV/AIDS (heterosexual : homo / bisexual) by year**

|      | 2014    | 2015    | 2016    | 2017    | 2018    | 2019    | 2020    | 2021    | 2022    | 2023    | 1984 – 2023    |
|------|---------|---------|---------|---------|---------|---------|---------|---------|---------|---------|----------------|
| HIV  | 0.2 : 1 | 0.2 : 1 | 0.2 : 1 | 0.1 : 1 | 0.2 : 1 | 0.2 : 1 | 0.3 : 1 | 0.3 : 1 | 0.3 : 1 | 0.3 : 1 | <b>0.4 : 1</b> |
| AIDS | 0.7 : 1 | 0.5 : 1 | 0.5 : 1 | 0.3 : 1 | 0.3 : 1 | 0.4 : 1 | 0.4 : 1 | 0.5 : 1 | 0.6 : 1 | 0.6 : 1 | <b>0.9 : 1</b> |

## 7. Injecting drug users in reported HIV/AIDS

**Table 7.1 Injecting drug users in reported HIV/AIDS**

|                              | This quarter<br>(Oct - Dec 2023) | Last quarter<br>(Jul - Sep 2023) | Same quarter last year<br>(Oct - Dec 2022) | Cumulative<br>(1984 – 2023) |
|------------------------------|----------------------------------|----------------------------------|--|-----------------------------|
| HIV<br>(% of reported HIV)   | 2<br>2.1%                        | 1<br>0.9%                        | 0<br>0.0%                                  | <b>383</b><br><b>3.2%</b>   |
| AIDS<br>(% of reported AIDS) | 0<br>0.0%                        | 0<br>0.0%                        | 0<br>0.0%                                  | <b>70</b><br><b>2.8%</b>    |

**Table 7.2 Number of injecting drug user in reported HIV/AIDS by year**

|                              | 2014        | 2015         | 2016        | 2017        | 2018        | 2019        | 2020        | 2021        | 2022        | 2023        | 1984 – 2023                 |
|------------------------------|-------------|--------------|-------------|-------------|-------------|-------------|-------------|-------------|-------------|-------------|-----------------------------|
| HIV<br>(% of reported HIV)   | 6<br>(0.9%) | 16<br>(2.2%) | 6<br>(0.9%) | 6<br>(0.9%) | 4<br>(0.6%) | 5<br>(0.9%) | 2<br>(0.4%) | 3<br>(0.7%) | 2<br>(0.5%) | 8<br>(2.0%) | <b>383</b><br><b>(3.2%)</b> |
| AIDS<br>(% of reported AIDS) | 2<br>(1.9%) | 2<br>(1.8%)  | 1<br>(0.9%) | 2<br>(2.2%) | 1<br>(0.7%) | 0<br>(0.0%) | 0<br>(0.0%) | 1<br>(1.1%) | 0<br>(0.0%) | 2<br>(2.0%) | <b>70</b><br><b>(2.8%)</b>  |

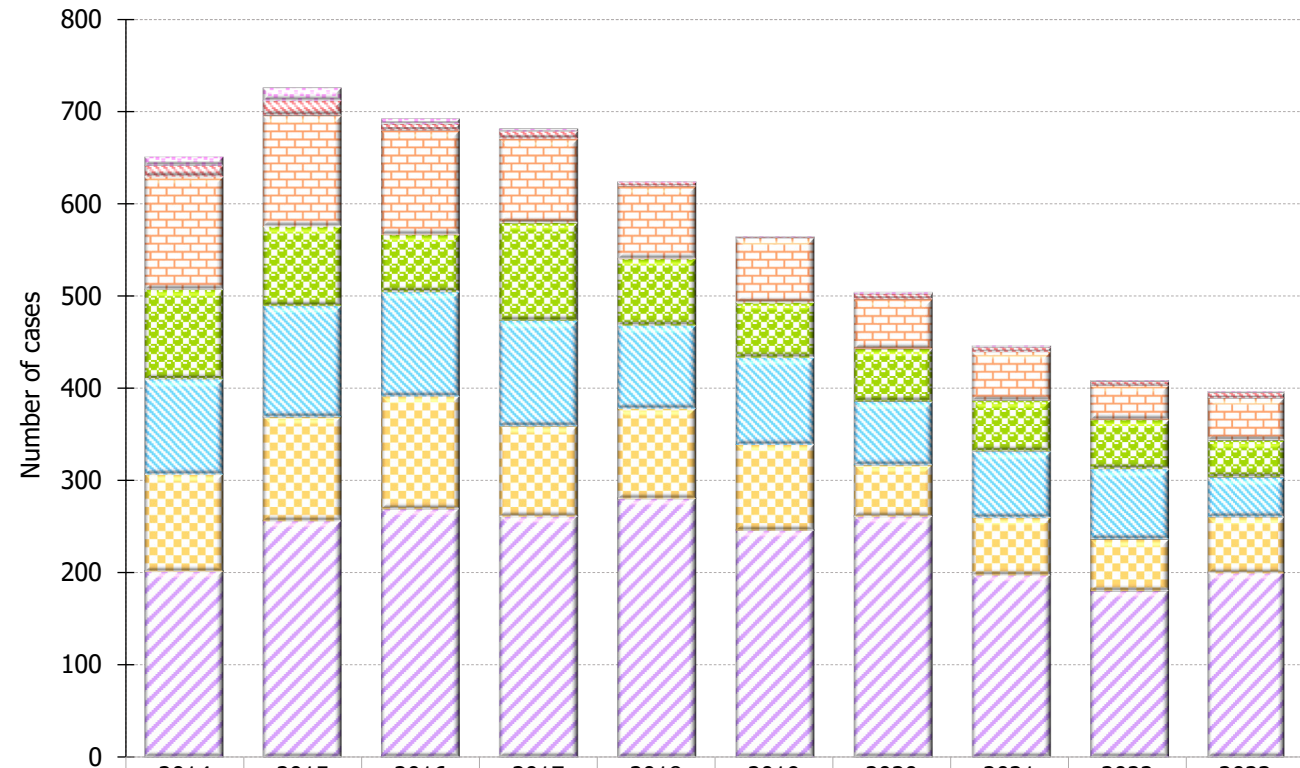
## 8. Source of referral of reported HIV/AIDS

**Table 8.1 Source of referral of reported HIV**

|   | This quarter<br>(Oct - Dec 2023) | Last quarter<br>(Jul - Sep 2023) | Same quarter last year<br>(Oct - Dec 2022) | Cumulative<br>(1984 – 2023) |
|---|----------------------------------|----------------------------------|--|-----------------------------|
| Public hospitals / clinics / laboratories     | 42                               | 61                               | 50   | 5,020                       |
| Private hospitals / clinics / laboratories    | 14                               | 21                               | 7  | 2,265                       |
| Social Hygiene Clinics                        | 11                               | 13                               | 15   | 1,743                       |
| DH AIDS Unit                                  | 8                                | 9                                | 13   | 1,509                       |
| AIDS service organisations (NGOs)             | 18                               | 7                                | 16   | 1,178                       |
| Hong Kong Red Cross Blood Transfusion Service | 2                                | 2                                | 1  | 186                         |
| Drug rehabilitation services                  | 0                                | 0                                | 0  | 137                         |
| <b>Total</b>                                  | <b>95</b>                        | <b>113</b>                       | <b>102</b>                                 | <b>12,038</b>               |



**Chart 8.1 Source of referral of reported HIV**



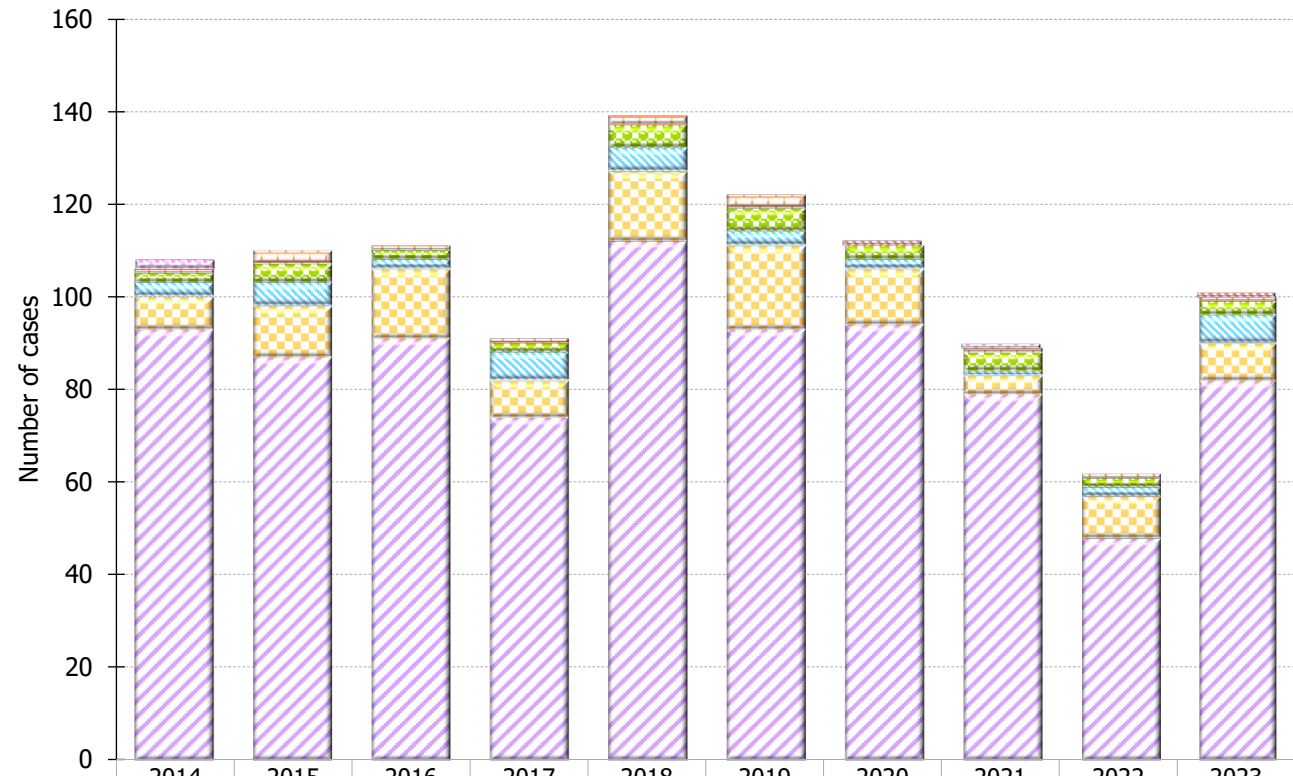
|   | 2014 | 2015 | 2016 | 2017 | 2018 | 2019 | 2020 | 2021 | 2022 | 2023 |
|---|------|------|------|------|------|------|------|------|------|------|
| Drug rehabilitation services                  | 10   | 14   | 6    | 3    | 1    | 1    | 2    | 2    | 1    | 1    |
| Hong Kong Red Cross Blood Transfusion Service | 12   | 16   | 7    | 8    | 4    | 1    | 6    | 5    | 4    | 6    |
| AIDS service organisations (NGOs)             | 122  | 120  | 113  | 91   | 79   | 70   | 54   | 53   | 38   | 46   |
| DH AIDS Unit                                  | 97   | 86   | 62   | 106  | 72   | 60   | 57   | 55   | 53   | 40   |
| Social Hygiene Clinics                        | 103  | 120  | 113  | 114  | 90   | 94   | 69   | 72   | 76   | 43   |
| Private hospitals / clinics / laboratories    | 105  | 113  | 122  | 98   | 98   | 93   | 56   | 62   | 56   | 61   |
| Public hospitals / clinics / laboratories     | 202  | 256  | 269  | 261  | 280  | 246  | 261  | 198  | 181  | 200  |

Year

**Table 8.2 Source of referral of reported AIDS**

|   | This quarter<br>(Oct - Dec 2023) | Last quarter<br>(Jul - Sep 2023) | Same quarter last year<br>(Oct - Dec 2022) | Cumulative<br>(1984 – 2023) |
|---|----------------------------------|----------------------------------|--|-----------------------------|
| Public hospitals / clinics / laboratories     | 9                                | 24                               | 9  | 1,926                       |
| Private hospitals / clinics / laboratories    | 2                                | 2                                | 0  | 308                         |
| Social Hygiene Clinics                        | 2                                | 1                                | 0  | 87                          |
| DH AIDS Unit                                  | 1                                | 1                                | 0  | 123                         |
| AIDS service organisations (NGOs)             | 0                                | 0                                | 0  | 21                          |
| Hong Kong Red Cross Blood Transfusion Service | 0                                | 0                                | 0  | 11                          |
| Drug rehabilitation services                  | 0                                | 0                                | 0  | 7                           |
| <b>Total</b>                                  | <b>14</b>                        | <b>28</b>                        | <b>9</b>                                   | <b>2,483</b>                |

**Chart 8.2 Source of referral of Reported AIDS**



|   | 2014 | 2015 | 2016 | 2017 | 2018 | 2019 | 2020 | 2021 | 2022 | 2023 |
|---|------|------|------|------|------|------|------|------|------|------|
| Drug rehabilitation services                  | 2    | 0    | 0    | 0    | 0    | 0    | 0    | 1    | 0    | 0    |
| Hong Kong Red Cross Blood Transfusion Service | 0    | 0    | 0    | 0    | 0    | 0    | 1    | 0    | 0    | 1    |
| AIDS service organisations (NGOs)             | 1    | 3    | 1    | 1    | 2    | 3    | 0    | 1    | 1    | 1    |
| DH AIDS Unit                                  | 2    | 4    | 2    | 2    | 5    | 5    | 3    | 4    | 2    | 3    |
| Social Hygiene Clinics                        | 3    | 5    | 2    | 6    | 5    | 3    | 2    | 1    | 2    | 6    |
| Private hospitals / clinics / laboratories    | 7    | 11   | 15   | 8    | 15   | 18   | 12   | 4    | 9    | 8    |
| Public hospitals / clinics / laboratories     | 93   | 87   | 91   | 74   | 112  | 93   | 94   | 79   | 48   | 82   |

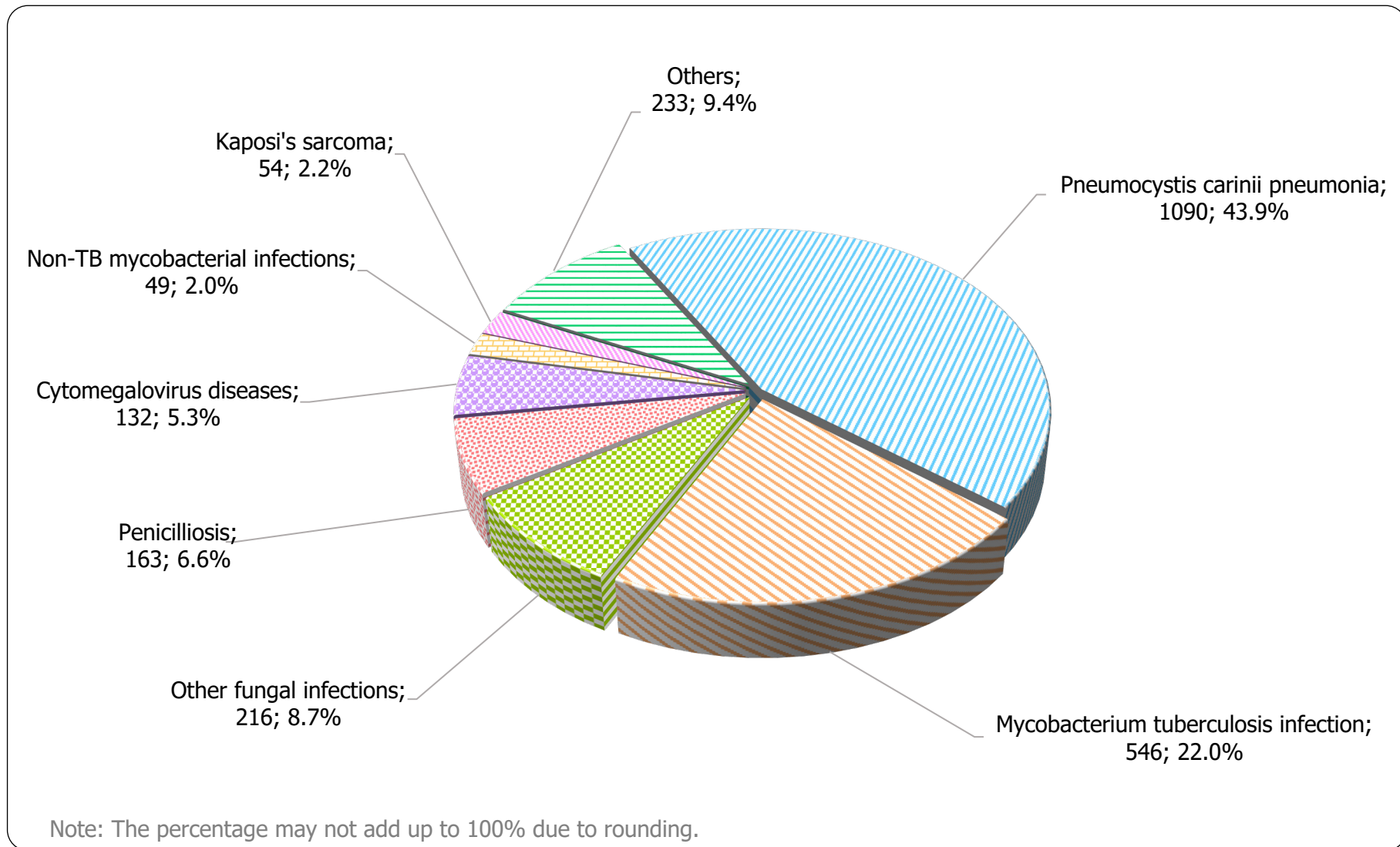
Year

## 9. Distribution of AIDS defining illnesses

**Table 9.1 Distribution of AIDS defining illness of reported AIDS**

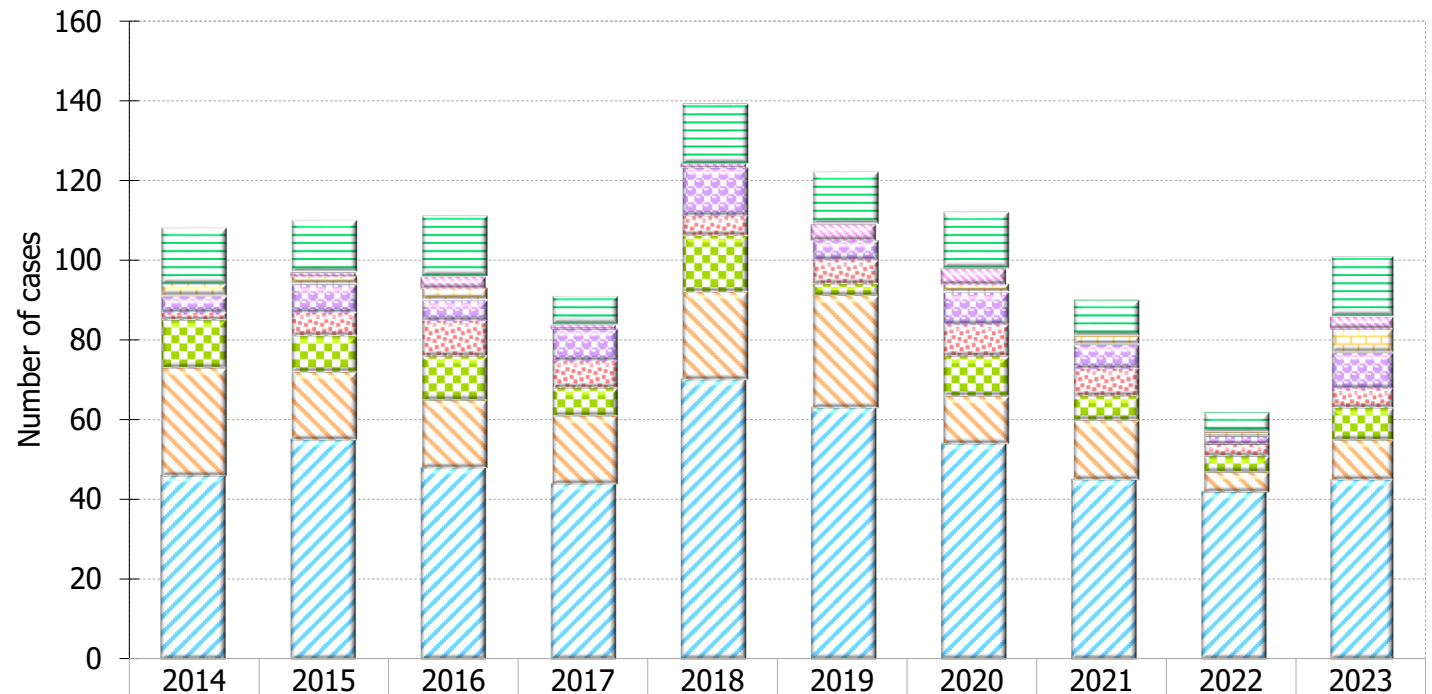
|                                       | This quarter<br>(Oct - Dec 2023) | Last quarter<br>(Jul - Sep 2023) | Same quarter last year<br>(Oct - Dec 2022) | Cumulative<br>(1984 – 2023) |
|---------------------------------------|----------------------------------|----------------------------------|--|-----------------------------|
| <i>Pneumocystis carinii pneumonia</i> | 5                                | 14                               | 6  | 1,090                       |
| <i>Mycobacterium tuberculosis</i>     | 1                                | 1                                | 1  | 546                         |
| Other fungal infections               | 0                                | 3                                | 0  | 216                         |
| Penicilliosis                         | 0                                | 1                                | 0  | 163                         |
| Cytomegalovirus diseases              | 4                                | 1                                | 0  | 132                         |
| Non-TB mycobacterial infections       | 1                                | 2                                | 0  | 49                          |
| Kaposi's sarcoma                      | 2                                | 0                                | 0  | 54                          |
| Others                                | 1                                | 6                                | 2  | 233                         |
| <b>Total</b>                          | <b>14</b>                        | <b>28</b>                        | <b>9</b>                                   | <b>2,483</b>                |

**Chart 9.1 AIDS defining illness of total reported AIDS**



Format: [ADI; Number; %]

**Chart 9.2 AIDS defining illness of reported AIDS by year**



|                                 | 2014 | 2015 | 2016 | 2017 | 2018 | 2019 | 2020 | 2021 | 2022 | 2023 |
|---------------------------------|------|------|------|------|------|------|------|------|------|------|
| Others                          | 14   | 13   | 15   | 7    | 15   | 13   | 14   | 9    | 5    | 15   |
| Kaposi's sarcoma                | 0    | 1    | 3    | 1    | 1    | 4    | 4    | 0    | 0    | 3    |
| Non-TB mycobacterial infections | 3    | 2    | 3    | 0    | 0    | 0    | 2    | 2    | 1    | 6    |
| Cytomegalovirus diseases        | 4    | 7    | 5    | 8    | 12   | 5    | 8    | 6    | 2    | 9    |
| Penicilliosis                   | 2    | 6    | 9    | 7    | 5    | 6    | 8    | 7    | 3    | 5    |
| Other fungal infections         | 12   | 9    | 11   | 7    | 14   | 3    | 10   | 6    | 4    | 8    |
| Tuberculosis                    | 27   | 17   | 17   | 17   | 22   | 28   | 12   | 15   | 5    | 10   |
| Pneumocystis carinii pneumonia  | 46   | 55   | 48   | 44   | 70   | 63   | 54   | 45   | 42   | 45   |

Year

## 10. Reported sexually transmitted infections (STIs) diagnosed in Social Hygiene Service

**Table 10.1 Summary table on the reported STIs diagnosed in Social Hygiene Service**

|   | This quarter<br>(Oct - Dec 2023) | Last quarter<br>(Jul - Sep 2023) | Same quarter last year<br>(Oct - Dec 2022) | In year 2023 |
|---|----------------------------------|----------------------------------|--|--------------|
| Syphilis                                      |                                  |                                  |  |              |
| <i>Primary</i>                                | 23                               | 23                               | 22   | 75           |
| <i>Secondary</i>                              | 68                               | 55                               | 56   | 230          |
| <i>Early latent</i>                           | 37                               | 47                               | 49   | 207          |
| <i>Late latent</i>                            | 119                              | 138                              | 117  | 486          |
| <i>Late (cardiovascular / neuro / ocular)</i> | 4                                | 1                                | 0  | 12           |
| <i>Congenital (early)</i>                     | 0                                | 0                                | 0  | 0            |
| <i>Congenital (late)</i>                      | 0                                | 0                                | 0  | 0            |
| <i>Others *</i>                               | 8                                | 5                                | 0  | 18           |
| Syphilis total                                | 259                              | 269                              | 244  | 1,028        |

(to be cont'd)

**Table 10.1 (cont'd)**

|   | This quarter<br>(Oct - Dec 2023) | Last quarter<br>(Jul - Sep 2023) | Same quarter last year<br>(Oct - Dec 2022) | In year 2023 |
|---|----------------------------------|----------------------------------|--|--------------|
| Gonorrhoea                              | 391                              | 384                              | 354  | 1,575        |
| Non-gonococcal urethritis (Male)        | 267                              | 274                              | 359  | 1,159        |
| Non-specific genital infection (Female) | 273                              | 316                              | 363  | 1,199        |
| Chlamydia trachomatis *                 | 487                              | 491                              | 404  | 1,804        |
| Genital wart                            | 268                              | 309                              | 266  | 1,104        |
| Herpes genitalis                        | 128                              | 118                              | 126  | 464          |
| Pediculosis pubis                       | 69                               | 44                               | 28   | 179          |
| Trichomonas                             | 47                               | 54                               | 57   | 180          |
| Genital ulcer                           | 142                              | 75                               | 2  | 249          |
| Mycoplasma genitalium *                 | 16                               | 20                               | 9  | 67           |
| Chancroid / Lymphogranuloma venereum    | 1                                | 0                                | 0  | 2            |
| Others                                  | 49                               | 102                              | 90   | 264          |
| <b>Total</b>                            | <b>2,397</b>                     | <b>2,456</b>                     | <b>2,302</b>                               | <b>9,274</b> |

\* Added as a new category since 2022 Q3



## 11. Gender distribution of reported STIs

**Table 11.1 Gender distribution of selected STI reported by Social Hygiene Service**

|                         | This quarter<br>(Oct - Dec 2023) | Last quarter<br>(Jul - Sep 2023) | Same quarter last year<br>(Oct - Dec 2022) | In year 2023   |
|-------------------------|----------------------------------|----------------------------------|--|----------------|
| <b>Primary Syphilis</b> |                                  |                                  |  |                |
| Male (M)                | 23                               | 23                               | 21   | 75             |
| Female (F)              | 0                                | 0                                | 1  | 0              |
| <b>M : F</b>            | <b>N.A.</b>                      | <b>N.A.</b>                      | <b>21.0 : 1</b>                            | <b>N.A.</b>    |
| <b>Gonorrhoea</b>       |                                  |                                  |  |                |
| Male (M)                | 338                              | 334                              | 305  | 1,393          |
| Female (F)              | 53                               | 50                               | 49   | 182            |
| <b>M : F</b>            | <b>6.4 : 1</b>                   | <b>6.7 : 1</b>                   | <b>6.2 : 1</b>                             | <b>7.7 : 1</b> |
| <b>NGU / NSGI *</b>     |                                  |                                  |  |                |
| Male (M)                | 267                              | 274                              | 359  | 1,159          |
| Female (F)              | 273                              | 316                              | 363  | 1,199          |
| <b>M : F</b>            | <b>1.0 : 1</b>                   | <b>0.9 : 1</b>                   | <b>1.0 : 1</b>                             | <b>1.0 : 1</b> |

(to be cont'd)

**Table 11.1 (cont'd)**

|                                | This quarter<br>(Oct - Dec 2023) | Last quarter<br>(Jul - Sep 2023) | Same quarter last year<br>(Oct - Dec 2022) | In year 2023   |
|--------------------------------|----------------------------------|----------------------------------|--|----------------|
| <b>CT *</b>                    |                                  |                                  |  |                |
| Male (M)                       | 317                              | 338                              | 320  | 1,285          |
| Female (F)                     | 170                              | 153                              | 84   | 519            |
| <b>M : F</b>                   | <b>1.9 : 1</b>                   | <b>2.2 : 1</b>                   | <b>3.8 : 1</b>                             | <b>2.5 : 1</b> |
| <b>Genital wart</b>            |                                  |                                  |  |                |
| Male (M)                       | 204                              | 252                              | 206  | 867            |
| Female (F)                     | 64                               | 57                               | 60   | 237            |
| <b>M : F</b>                   | <b>3.2 : 1</b>                   | <b>4.4 : 1</b>                   | <b>3.4 : 1</b>                             | <b>3.7 : 1</b> |
| <b><i>Herpes genitalis</i></b> |                                  |                                  |  |                |
| Male (M)                       | 79                               | 80                               | 77   | 316            |
| Female (F)                     | 49                               | 38                               | 49   | 148            |
| <b>M : F</b>                   | <b>1.6 : 1</b>                   | <b>2.1 : 1</b>                   | <b>1.6 : 1</b>                             | <b>2.1 : 1</b> |

\* NGU = Non-gonococcal urethritis

NSGI = Non-specific genital infection

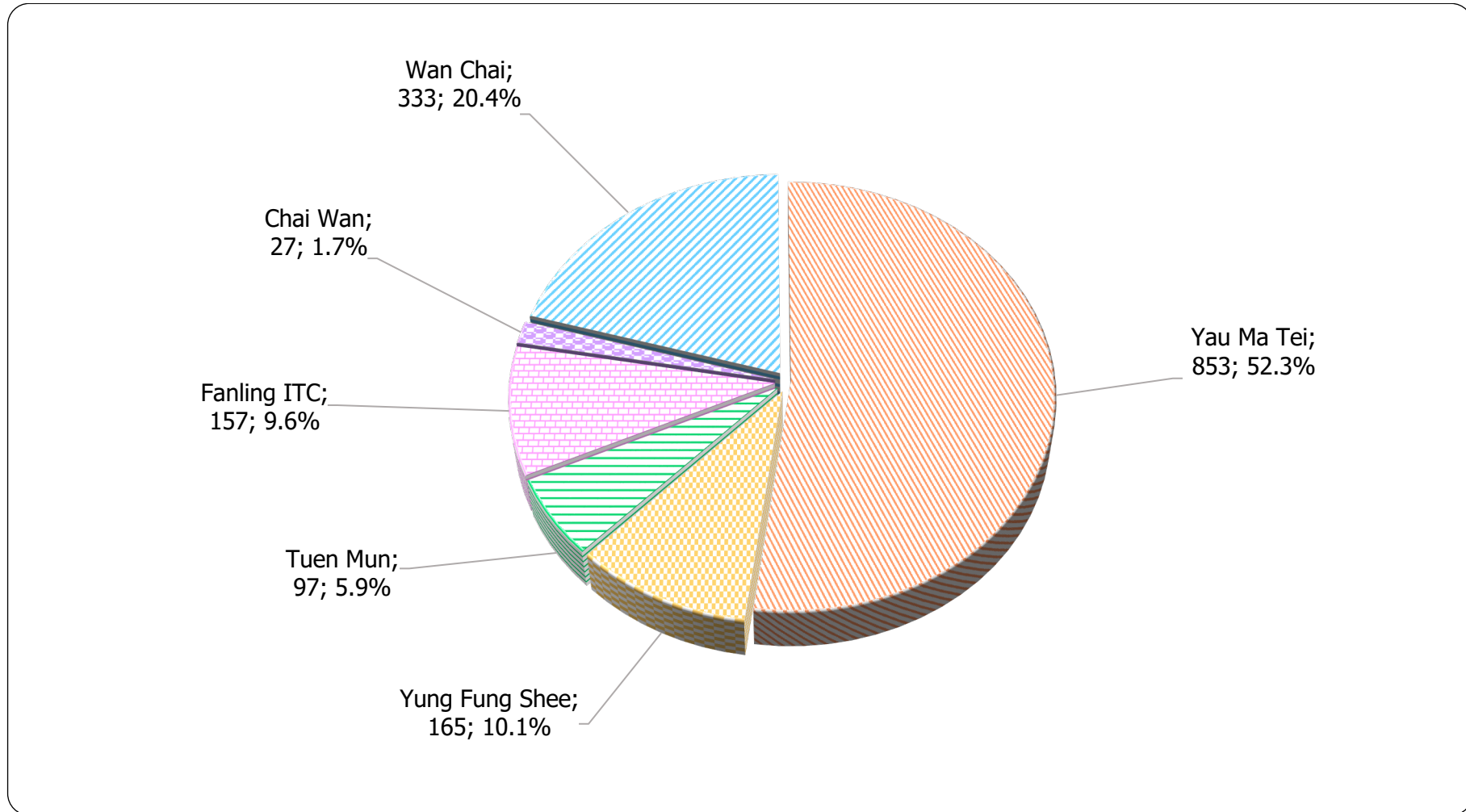
CT = Chlamydia trachomatis

**Table 11.2 Gender distribution of reported STI by clinic**

|                | This quarter<br>(Oct - Dec 2023) |            | Last quarter<br>(Jul - Sep 2023) |            | Same quarter last year<br>(Oct - Dec 2022) |            | In year 2023 |              |
|----------------|----------------------------------|------------|----------------------------------|------------|--|------------|--------------|--------------|
|                | Male                             | Female     | Male                             | Female     | Male                                       | Female     | Male         | Female       |
| Chai Wan       | 27                               | 3          | 20                               | 10         | 0  | 0          | 47           | 13           |
| Wan Chai       | 333                              | 164        | 326                              | 176        | 327  | 381        | 1,290        | 856          |
| Yau Ma Tei     | 853                              | 373        | 832                              | 339        | 769  | 0          | 3,344        | 1,015        |
| Yung Fung Shee | 165                              | 74         | 206                              | 76         | 163  | 144        | 662          | 333          |
| Tuen Mun       | 97                               | 80         | 160                              | 79         | 135  | 112        | 493          | 307          |
| Fanling ITC    | 157                              | 71         | 147                              | 85         | 148  | 123        | 599          | 315          |
| <b>Total</b>   | <b>1,632</b>                     | <b>765</b> | <b>1,691</b>                     | <b>765</b> | <b>1,542</b>                               | <b>760</b> | <b>6,435</b> | <b>2,839</b> |

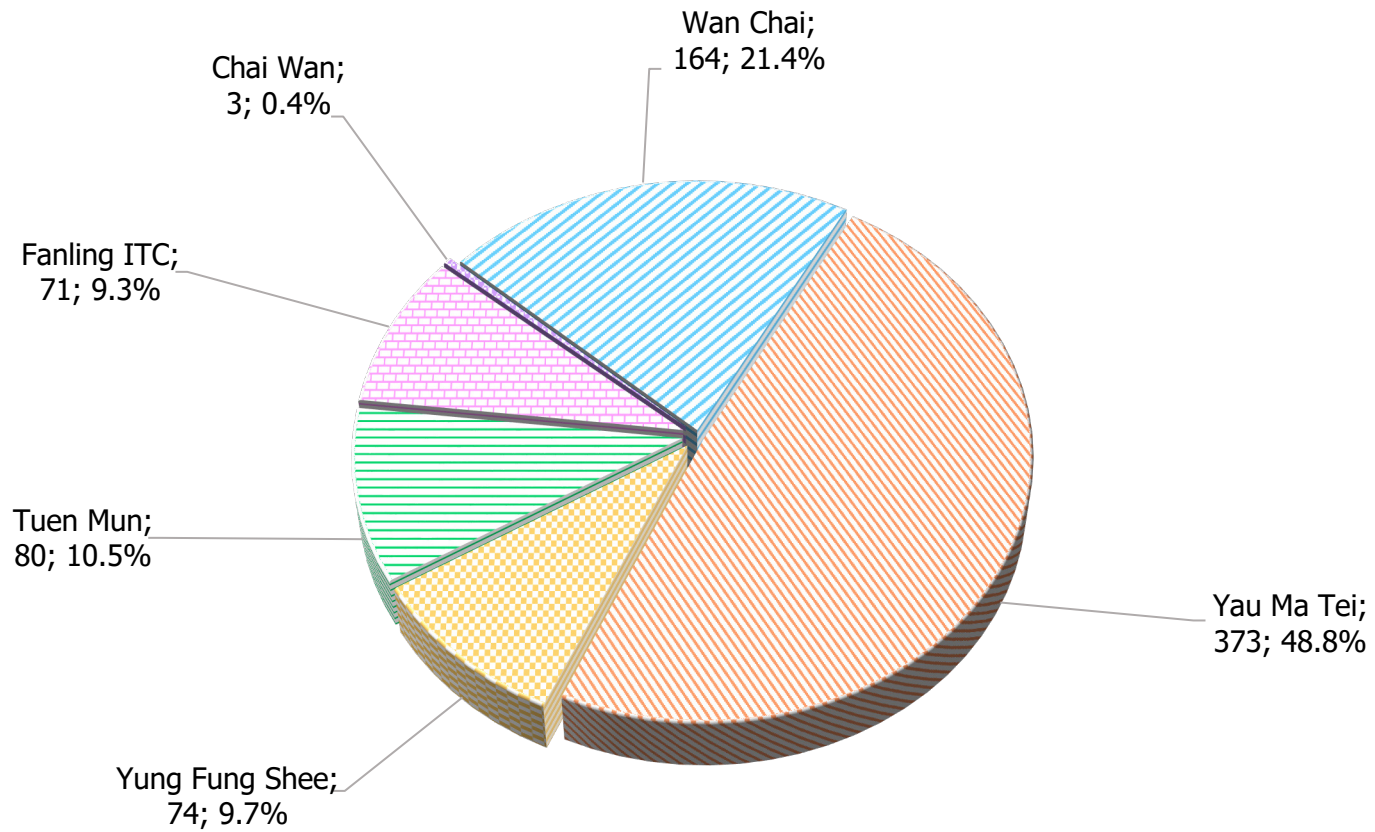
## 12. Clinic distribution

Chart 12.1 Number of newly report STI in Q4 2023 by clinic (male clients)



Format: [Clinic; Number; %]

**Chart 12.2 Number of newly report STI in Q4 2023 by clinic (female clients)**



Note: The percentage may not add up to 100% due to rounding.

Format: [Clinic; Number; %]